



## Rutherford Heights, Trafalgar Place, Rodney Road, Elephant and Castle, SE17

Price **£725 per week** | Furnished



# Rutherford Heights, Trafalgar Place, Rodney Road, Elephant and Castle, SE17



2 Bedrooms



2 Bathrooms



1 Reception



Balcony



Secure Cycle Storage



Local Amenities



24-Hour Concierge



0.3 MI Elephant & Castle

A spacious two bedroom, two bathroom apartment set within the desirable development, Trafalgar Place, Elephant & Castle SE17. This furnished property has an open-plan living room, a kitchen with high quality integrated appliances, large private balcony, master ensuite and underfloor heating throughout. The development is located a short distance away from Elephant and Castle Underground station.

Residents also have access to a 24-hour concierge service, cycle storage and communal roof terraces with panoramic views across London's skyline. The

location of the development is ideal for access to the nearby amenities including bars, restaurants and the Elephant and Castle Shopping Centre.

The development is located a short distance away from Elephant and Castle Underground station, which serves Bakerloo and Northern lines. This will offer a valuable transport link for commutes to several destinations across the Capital.

**Local Authority:** Southwark

**Council Tax Band:** E

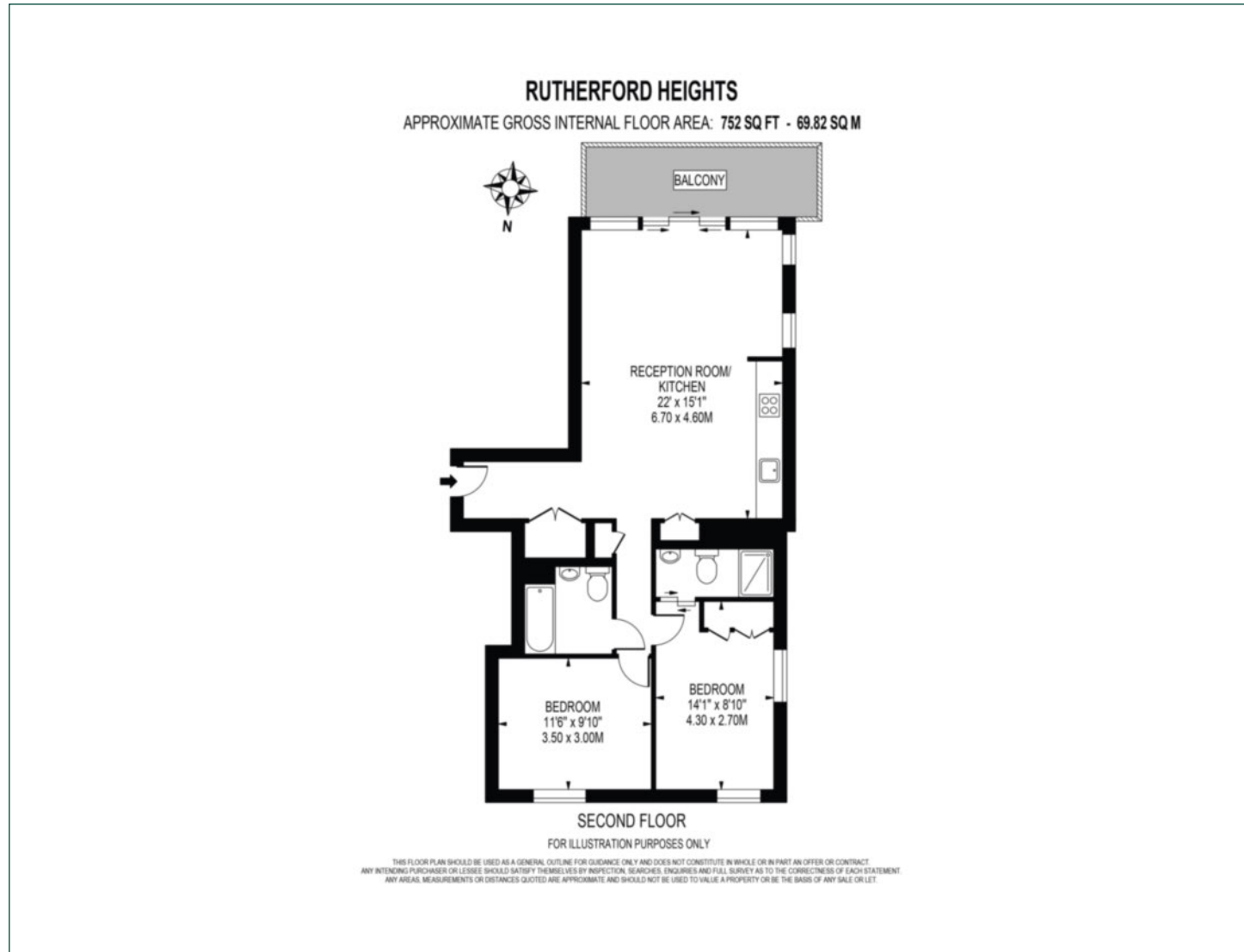
**EPC:** B

**Security deposit:** equivalent to 5 weeks' rent



# Floorplan

791 sq ft | 69.82 sq m



## Elephant & Castle

One The Elephant, 5 St Gabriel Walk, London, SE1 6FA

## Lettings

020 3869 2888 | [eandc.lettings@chaseevans.co.uk](mailto:eandc.lettings@chaseevans.co.uk)

## We're here to help.

IMPORTANT NOTICE - These particulars have been prepared in good faith and they are not intended to constitute part of an offer or contract. We have not performed a structural survey on this property and the services, appliances and specific fittings have not been tested. All photographs, measurements, floor plans and distances referred to are given as a guide and should not be relied upon.

[chaseevans.com](https://www.chaseevans.com)