

Mansfield Point, Trafalgar Place, Rodney Road, SE17

Asking price **£700,000** | Leasehold



Mansfield Point, Trafalgar Place, Rodney Road, SE17



2 Bedrooms



2 Bathrooms



1 Reception



Balcony



Communal Roof Top



Local Amenities



24-Hour Concierge



0.4 MI Elephant & Castle

Impressive two bedroom, two bathroom apartment featuring a desirable layout, located in the highly coveted Trafalgar Place. The accommodation boasts a spacious reception area with single aspect views, a chic open plan kitchen equipped with integrated appliances, sleek wood flooring, and expansive floor to ceiling windows.

Recessed lighting enhances the modern ambiance, while two generously sized double bedrooms offer comfort, with the master suite benefiting from built-in wardrobes and an en suite bathroom. The apartment is equipped with underfloor heating and provides ample storage throughout. Additionally, it features a large balcony.

Residents will also have access to a 24-hour concierge

service, communal garden, café, crèche and a rooftop space for inner city gardening or relaxing. There are a plethora of amenities located nearby One The Elephant including restaurants, cafés and a brand new Elephant and Castle Shopping Centre coming in 2025.

The development is located half a mile (or around a 10min walk) from Elephant & Castle National Rail and Underground stations, providing Underground and Rail services for commutes towards the City and West End. The property is serviced by Thameslink, Southeastern, Bakerloo and Northern Line, opening up a plethora of transport links. Via Northern Line services Liverpool Street is just a 12min commute away.

Tenure: Leasehold (241 years remaining)

Local Authority: Southwark Council

Ground Rent: £375 p.a.

Council Tax Band: E

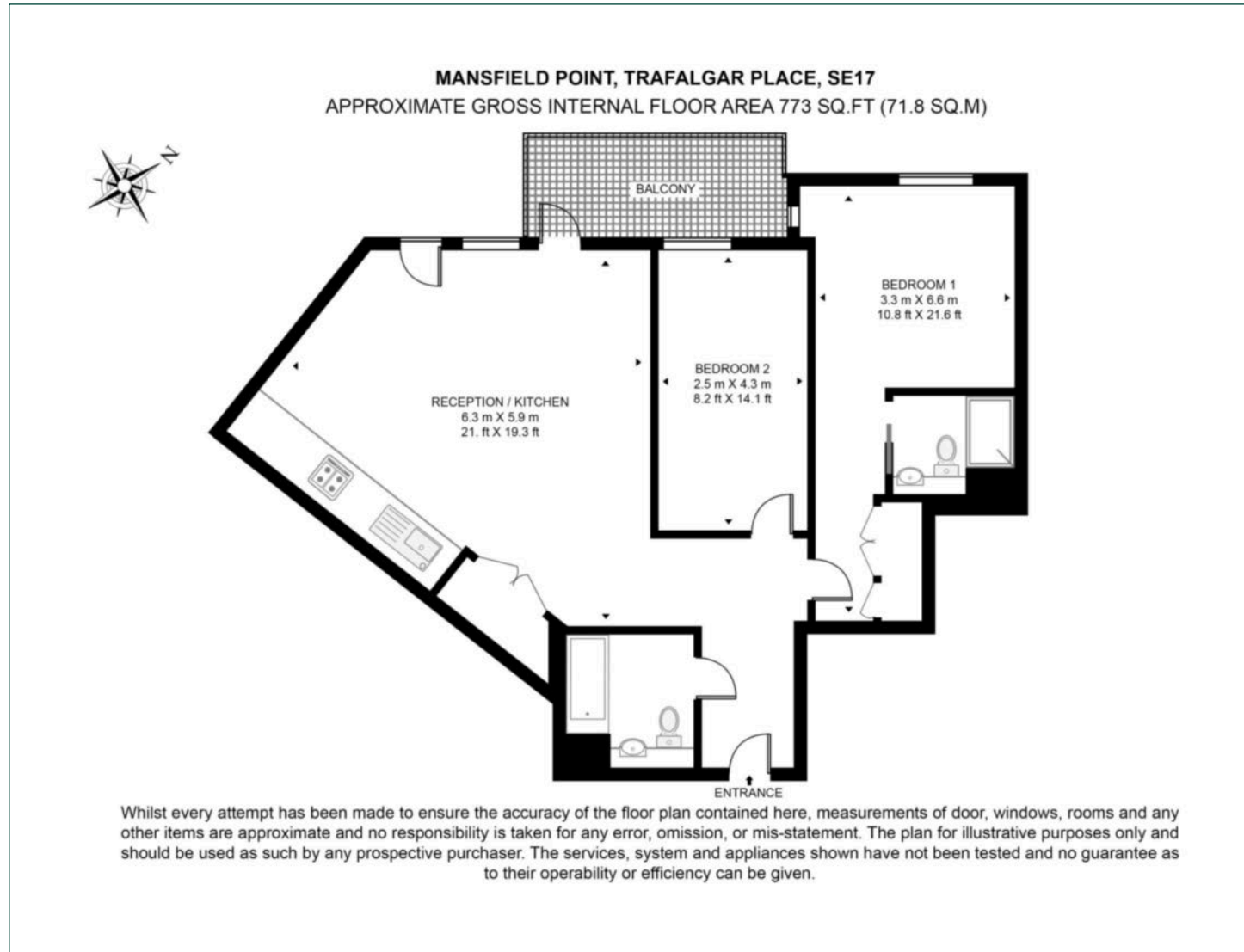
Service Charge: £6,496 p.a.

EPC: B



Floorplan

773 sq ft | 71.8 sq m



Elephant & Castle

One The Elephant, 5 St Gabriel Walk, London, SE1 6FG

Sales

020 3869 2898 | eandc.sales@chaseevans.com

We're here to help.

IMPORTANT NOTICE - These particulars have been prepared in good faith and they are not intended to constitute part of an offer or contract. We have not performed a structural survey on this property and the services, appliances and specific fittings have not been tested. All photographs, measurements, floor plans and distances referred to are given as a guide and should not be relied upon.

chaseevans.com

 Chase Evans