

Eastern Building, Triptych, Park Street, South Bank, SE1

Price **£850 per week** | Furnished



Eastern Building, Triptych, Park Street, South Bank, SE1



1 Bedroom



1 Bathroom



1 Reception



Balcony



Residents Lounge



Local Amenities



24-Hour Concierge



0.5 MI Southwark

A light, bright and spacious one bedroom apartment in Triptych Bankside offers an airy open plan living area and stylish kitchen with Miele integrated appliances. It features a generous bedroom with built in wardrobes, stunning marble effect bathroom suite with smart fittings and fixtures, floor-to-ceiling glazing, engineered oak flooring, air conditioning throughout, tablet-controlled lighting system and large balcony.

Residents have access to private amenities such as 24-hour concierge, residents' lounge, workspace facilities, a games room and a private cinema and

communal gardens. Located next to the Tate Modern, the building is a short walk from both London Bridge and Southwark stations and benefits from a large selection of restaurants and food options on Southwark Street and Borough Market.

Triptych Bankside, waterfront development comprising two residential towers, is located on the Southbank and is designed by renowned London architects Squire & Partners. Inspired by the movement of the Thames, rippling curves of the balconies present a distinctive contrast to the sharp lines of lines of the surround buildings in the area.

Local Authority:

Southwark Council

Council Tax Band:

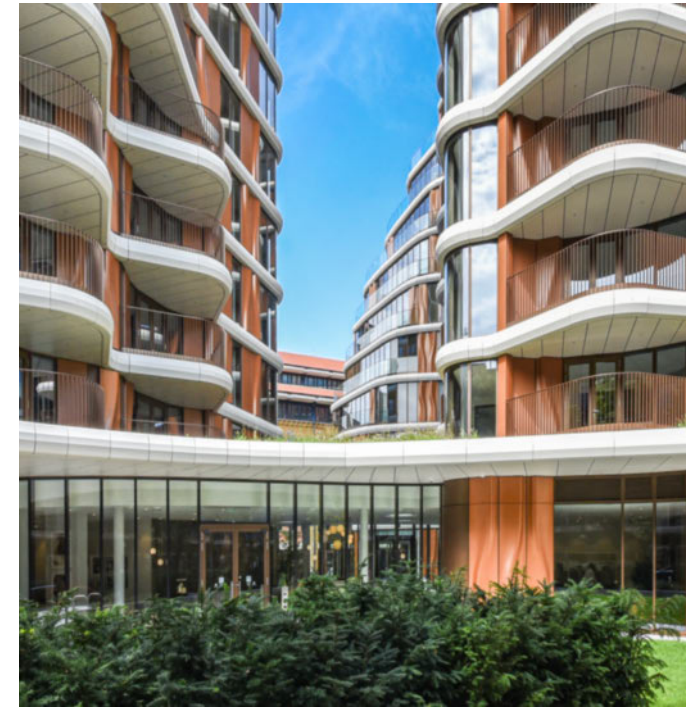
E

EPC:

B

Security deposit:

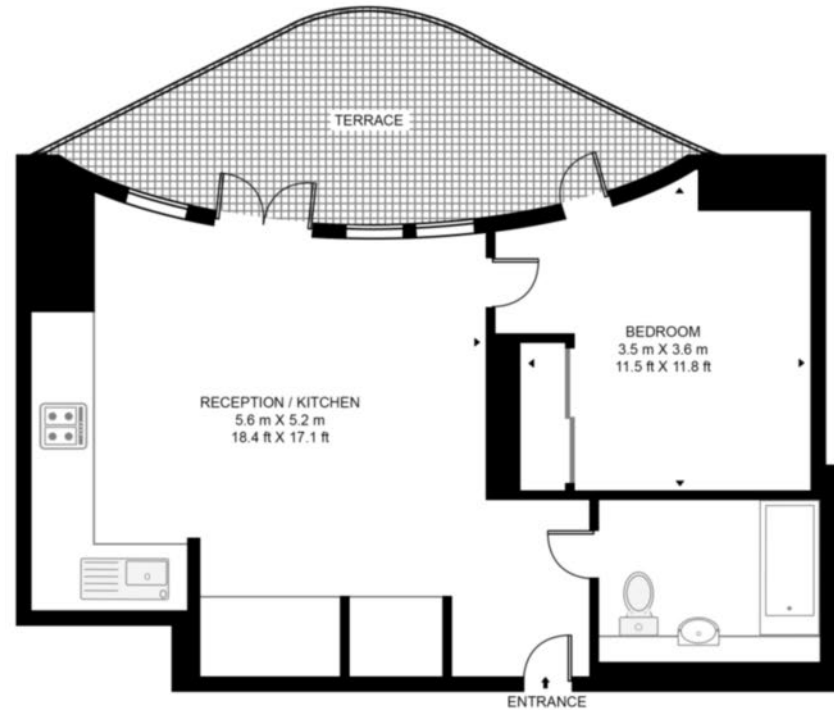
equivalent to 5 weeks' rent



Floorplan

1,673 sq ft | 155.4 sq m

TRIPTYCH, 185 PARK STREET
APPROXIMATE GROSS INTERNAL FLOOR AREA 555 SQ.FT (51.6 SQ.M)



Whilst every attempt has been made to ensure the accuracy of the floor plan contained here, measurements of door, windows, rooms and any other items are approximate and no responsibility is taken for any error, omission, or mis-statement. The plan for illustrative purposes only and should be used as such by any prospective purchaser. The services, system and appliances shown have not been tested and no guarantee as to their operability or efficiency can be given.

Elephant & Castle

One The Elephant, 5 St Gabriel Walk, London, SE1 6FA

Lettings

020 3869 2888 | eandc.lettings@chaseevans.com

We're here to help.

IMPORTANT NOTICE - These particulars have been prepared in good faith and they are not intended to constitute part of an offer or contract. We have not performed a structural survey on this property and the services, appliances and specific fittings have not been tested. All photographs, measurements, floor plans and distances referred to are given as a guide and should not be relied upon.

chaseevans.com

 Chase Evans