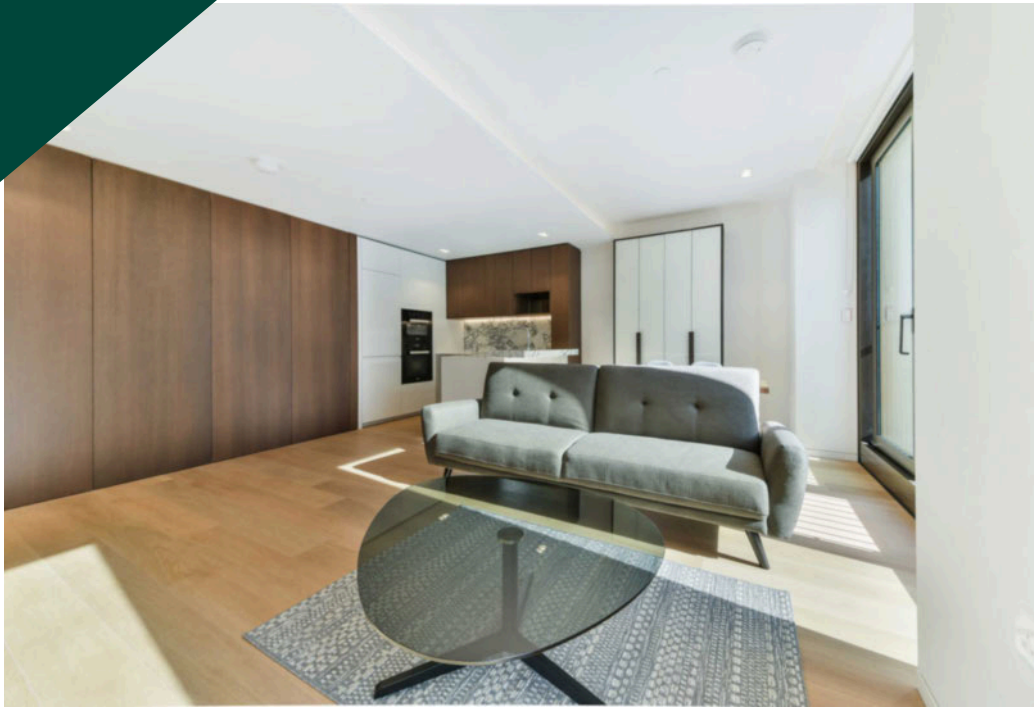


Southbank Place, Casson Square, Waterloo, SE1

Price **£950 per week** | Furnished



Southbank Place, Casson Square, Waterloo, SE1



1 Bedroom



1 Bathroom



1 Reception



Comfort Cooling



Bicycle Storage



Fitness Suite



Local Amenities



24-Hr Concierge



0.2 MI Waterloo

A luxury one bedroom apartment with a winter garden set in Casson Square, the new central London riverside development close to the London Eye and Waterloo Bridge, Waterloo SE1. Comprising a large open-plan living area, a modern integrated kitchen, a sizable bedroom with fitted wardrobes and a contemporary bathroom suite.

Casson Square offers a 24-hour concierge service, bicycle storage, a revolutionary private health and fitness suite and an underground entrance to Waterloo Station. Residents of this immaculate development also benefit from spectacular views

over the Thames towards Westminster and the London Eye. As for amenities, there's an impeccable plaza with tons of retail space, restaurants and bars. Casson Square is just 0.2 miles from Waterloo Station and its exceptional transport links, with services along the South Western national railway in addition to Bakerloo, Jubilee, Northern and Waterloo and City Lines. Canary Wharf can be reached in just 13min via Jubilee line services.



Local Authority:

Lambeth

Council Tax Band:

F

EPC:

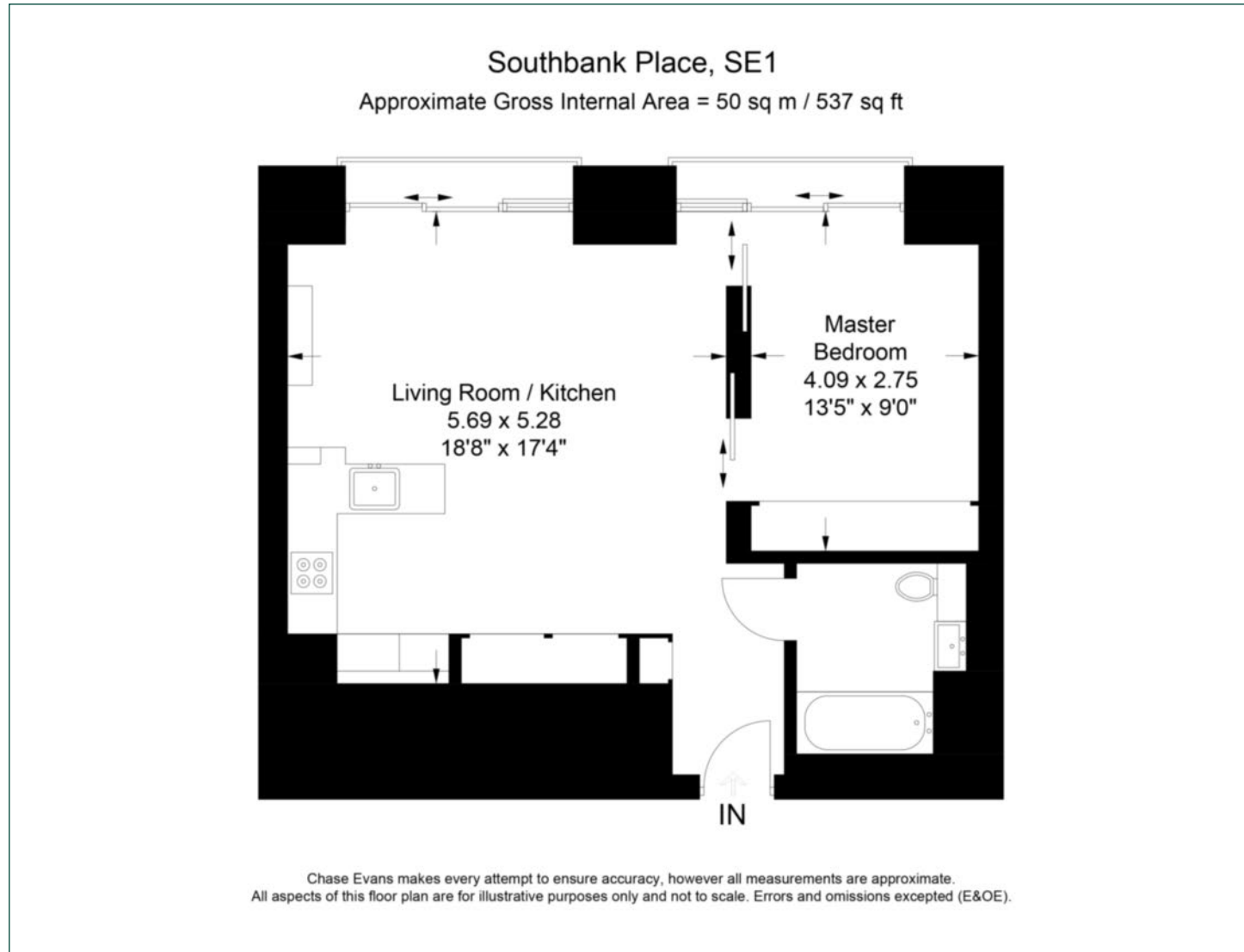
B

Security deposit:

equivalent to 5 weeks' rent

Floorplan

537 sq ft | 50.0 sq m



Canary Wharf

Horizon Building, 15 Hertsmere Road, London, E14 4AW

Lettings

020 7515 1001 | canarywharf.sales@chaseevans.com

We're here to help.

IMPORTANT NOTICE - These particulars have been prepared in good faith and they are not intended to constitute part of an offer or contract. We have not performed a structural survey on this property and the services, appliances and specific fittings have not been tested. All photographs, measurements, floor plans and distances referred to are given as a guide and should not be relied upon.

chaseevans.com