



Kings Tower, Chelsea Creek, Bridgewater Avenue, SW6

Price **£600 per week** | Furnished



Kings Tower, Chelsea Creek, Bridgewater Avenue, SW6



Studio



1 Bathroom



1 Reception



Balcony



Gymnasium



Local Amenities



24-Hour Concierge



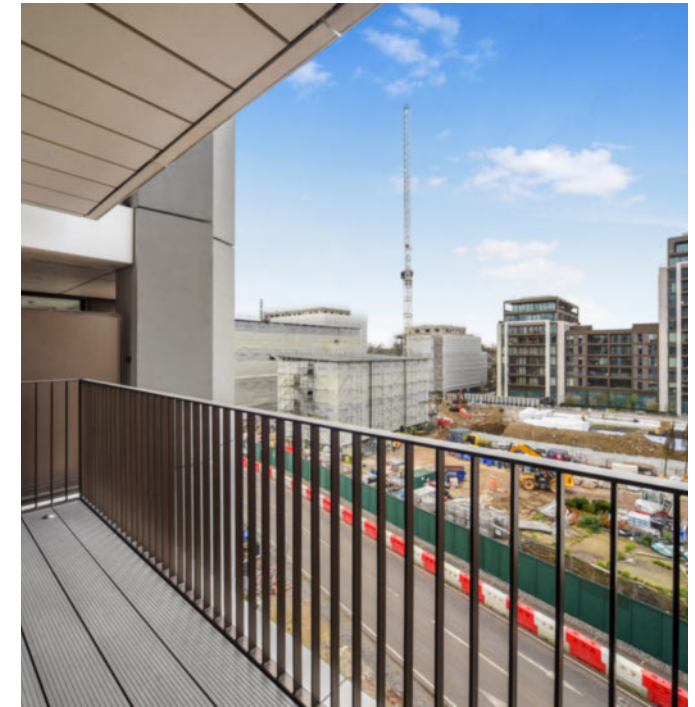
0.1 MI Imperial Wharf

This modern studio apartment with a balcony in Chelsea Creek riverside development in Fulham/Chelsea neighbourhood. Fully furnished, the flat is light and well-proportioned comprising an entrance lobby, a fully fitted kitchen and entertainment area opening onto the balcony.

Features include floor-to-ceiling glazing, a good sized bedroom with fitted wardrobe space, and a full-size bathroom. Features include wood flooring, air conditioning, under-floor heating and bespoke fittings and fixtures.

Chelsea Creek is set in the heart of a sought-after riverside district and has a 24-hour concierge, access to a residents' club with a private cinema, a wellness centre and a sky lounge set on the 31st floor.

Nearby the apartment are the Chelsea Design Centre, Chelsea Harbour, and the Lots Road Auction Centre. The apartment is set next to the Imperial Wharf Station (London Overground), the flat is also a short distance away from Fulham Broadway for District line services.



Local Authority:

Hammersmith & Fulham

Council Tax Band:

G

EPC:

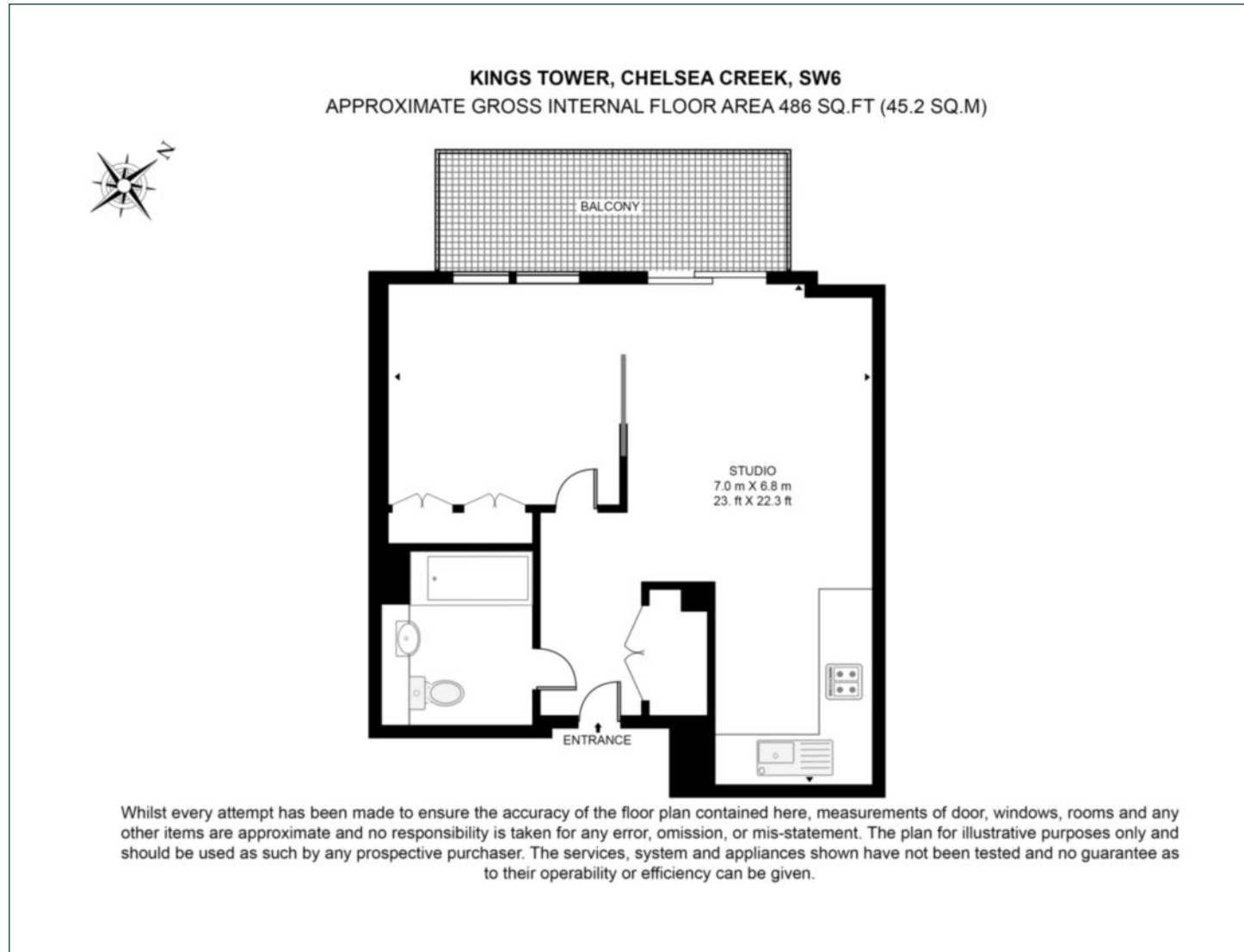
B

Security deposit:

equivalent to 5 weeks' rent

Floorplan

486 sq ft | 45.2 sq m



Elephant & Castle

One The Elephant, 5 St Gabriel Walk, London, SE1 6FG

Lettings

020 3869 2888 | eandc.lettings@chaseevans.com

We're here to help.

IMPORTANT NOTICE - These particulars have been prepared in good faith and they are not intended to constitute part of an offer or contract. We have not performed a structural survey on this property and the services, appliances and specific fittings have not been tested. All photographs, measurements, floor plans and distances referred to are given as a guide and should not be relied upon.

[chaseevans.com](https://www.chaseevans.com)

 Chase Evans