



The Tower, One The Elephant, St Gabriel Walk, Elephant & Castle, SE1

Price **£795 per week** | Furnished



The Tower, One The Elephant, St Gabriel Walk, Elephant & Castle, SE1



2 Bedrooms



2 Bathrooms



1 Reception



Balcony



Communal Gardens



Local Amenities



24-Hour Concierge



0.1 MI Elephant & Castle

A modern and large two bedroom two bathroom luxury dual aspect apartment with a private balcony set within this striking tower in Elephant & Castle. This property offers a spacious open plan living room, fully integrated kitchen, master bedroom with en-suite and dressing area, a further double bedroom and a full size bathroom.

Residents will also have access to a 24-hour concierge service, communal reading garden, pool, gym, café, crèche, residents' projector room and a rooftop space for inner city gardening or relaxing. There are several amenities located nearby

including bars, restaurants, cafés. The development is located a short distance from Elephant & Castle station, providing Underground and rail services along Thameslink, Southeastern, Bakerloo and Northern Lines, opening a plethora of transport links.

Local Authority:

Southwark Council

Council Tax Band:

E

EPC:

B

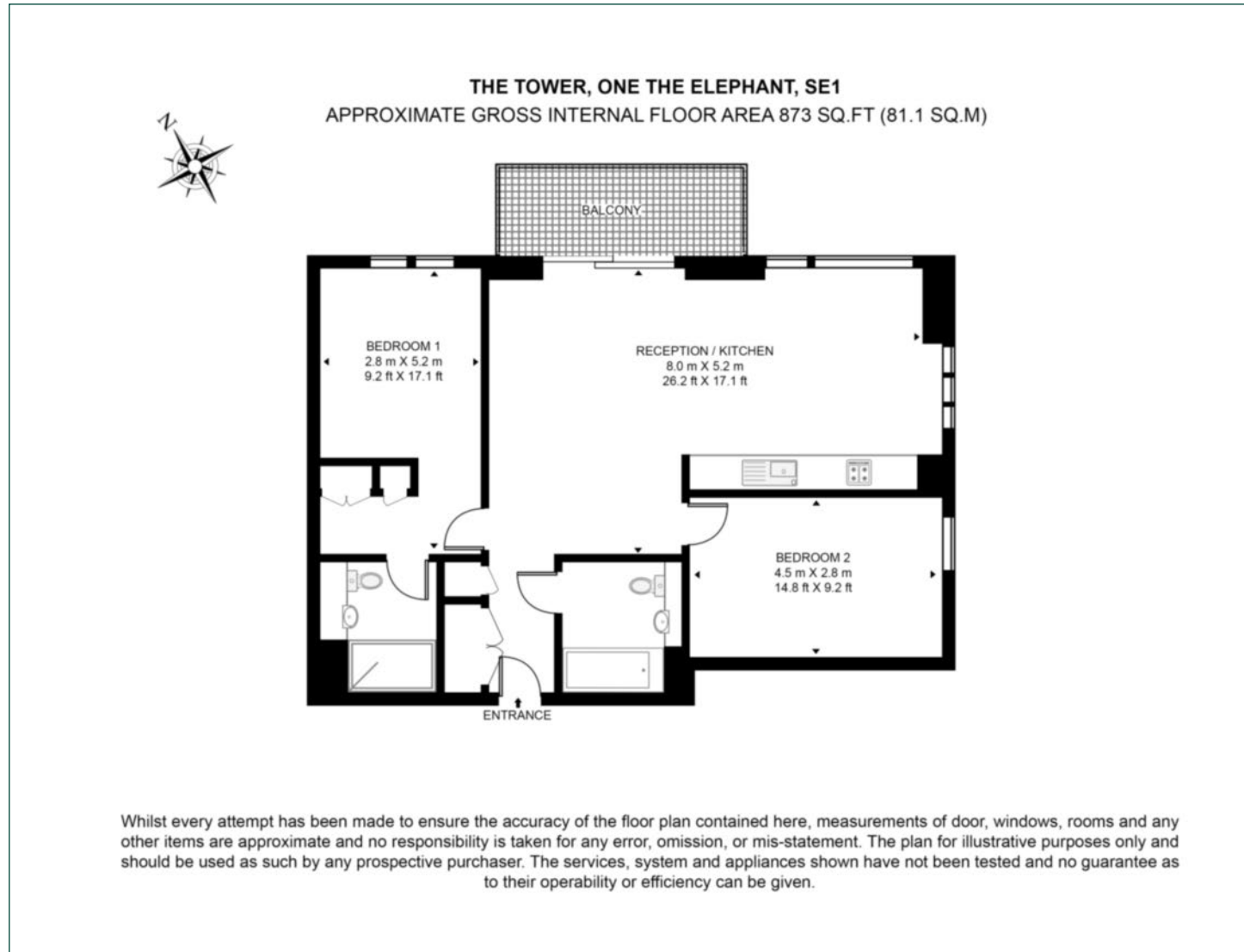
Security deposit:

equivalent to 5 weeks' rent



Floorplan

876 sq ft | 81.4 sq m



Elephant & Castle

One The Elephant, 5 St Gabriel Walk, London, SE1 6FA

Lettings

020 3869 2888 | eandc.lettings@chaseevans.co.uk

We're here to help.

IMPORTANT NOTICE - These particulars have been prepared in good faith and they are not intended to constitute part of an offer or contract. We have not performed a structural survey on this property and the services, appliances and specific fittings have not been tested. All photographs, measurements, floor plans and distances referred to are given as a guide and should not be relied upon.

chaseevans.com