



Hurlock Heights, Elephant Park, Deacon Street, Elephant & Castle, SE17

Price **£630 per week** | Furnished



Hurlock Heights, Elephant Park, Deacon Street, Elephant & Castle, SE17



1 Bedroom



1 Bathroom



1 Reception



Balcony



Gymnasium



Local Amenities



24-Hour Concierge



0.4 MI Elephant & Castle

A one bed apartment arranged over approx. 619 sq ft in Hurlock Heights, a building forming part of the impressive Elephant Park development, SE17. Comprises a dual-aspect reception room with wood flooring and large glazing opening onto a private balcony, an open plan fitted kitchen with fully integrated appliances, a double bedroom with built-in wardrobes and a bathroom with contemporary fittings and storage.

Residents benefit from 24-hour concierge, communal gardens and access to a gym. There are several amenities located nearby including bars, cafés, restaurants and the Elephant & Castle Shopping Centre.

Elephant Park is a new, beautifully landscaped area and

maintained 0.4 hectares of green space nearby featuring a water garden with fountains, mature trees, various walking trails, exquisitely planted flower beds, and a live performance area.

This iconic residential complex enjoys a unique location on the south bank of the River Thames, close to London landmarks such as Tower Bridge, The Shard and Tate Modern, making it one of the city's key centres for arts and culture. The area is also home to UAL's London College of Communication and London South Bank University.

Set next to Elephant & Castle Tube and the National Rail Station, the apartment is superbly connected with the West End, the City, Canary Wharf, and many South London suburbs.

Local Authority: Southwark

Council Tax Band: D

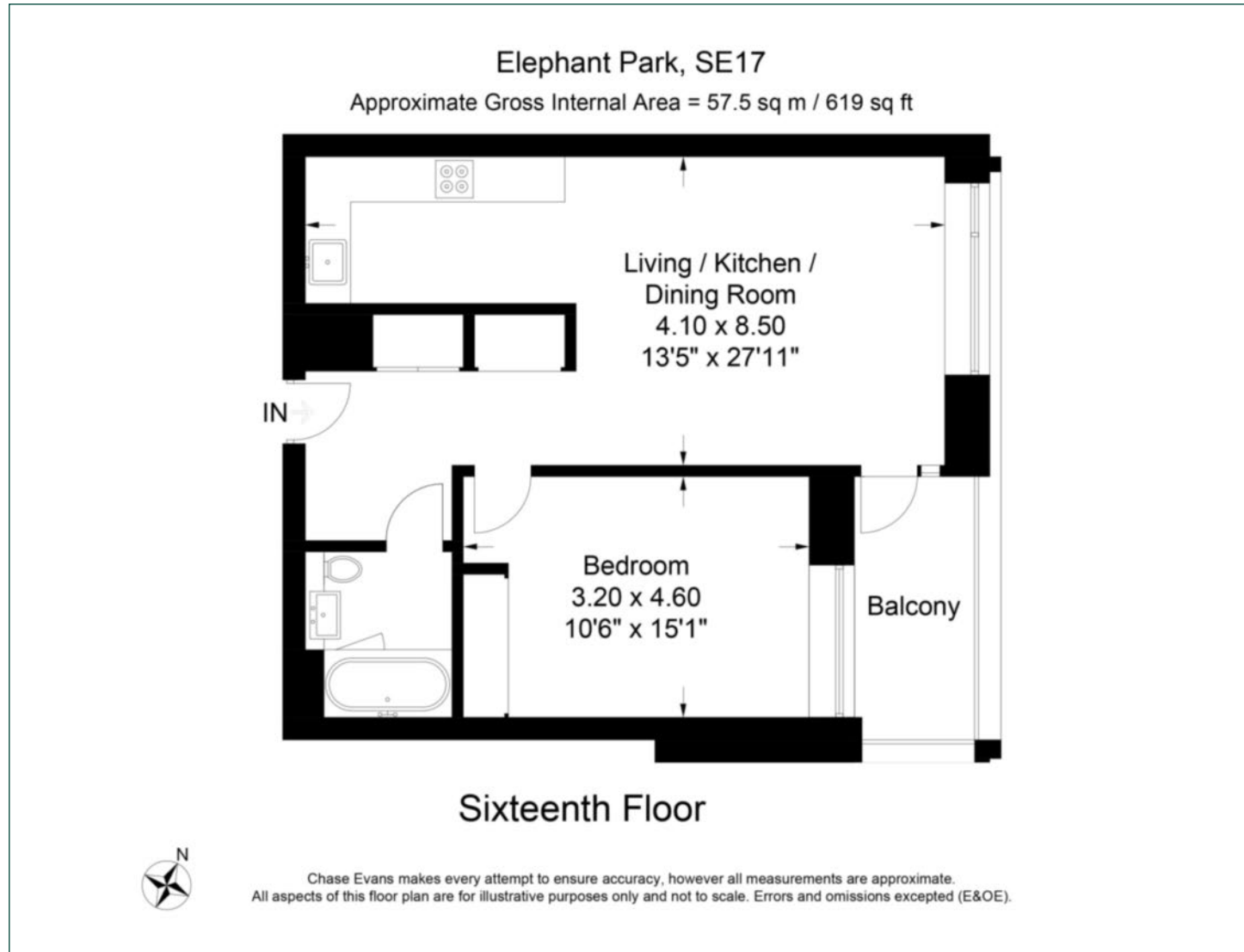
EPC: B

Security deposit: equivalent to 5 weeks' rent



Floorplan

619 sq ft | 57.5 sq m



Elephant & Castle

One The Elephant, 5 St Gabriel Walk, London, SE1 6FA

Lettings

020 3869 2888 | eandc.lettings@chaseevans.co.uk

We're here to help.

IMPORTANT NOTICE - These particulars have been prepared in good faith and they are not intended to constitute part of an offer or contract. We have not performed a structural survey on this property and the services, appliances and specific fittings have not been tested. All photographs, measurements, floor plans and distances referred to are given as a guide and should not be relied upon.

chaseevans.com

 Chase Evans