



The Strata, Walworth Road, Elephant & Castle, SE1

Asking price **£665,000** | Freehold



The Strata, Walworth Road, Elephant & Castle, SE1



2 Bedrooms



2 Bathrooms



1 Reception



24-Hour Concierge



Cycle Storage



Local Amenities



0.2 MI Elephant & Castle

Luxury two-bed, two-bath apartment with stunning views situated within this spectacular development The Strata, Elephant & Castle SE1. Comprises a spacious open plan living area with wood flooring and floor-to-ceiling windows offering London skyline views, a open-plan kitchen with fully integrated appliances, master bedroom with built-in wardrobe and ensuite, a further ample bedroom and a contemporary fitted bathroom suite. A separate secure storage cage is included in the sale, accessed off the communal hallway.

Residents benefit from an array of facilities which include secure cycle storage and a 24-hour concierge service. There are several amenities located nearby, including bars, cafés, restaurants and the Elephant and Castle Shopping Centre.

The development is located only 0.2 miles from Elephant & Castle National Rail and Underground station, serviced by Thameslink, southeastern, Bakerloo and Northern lines, providing easy commutes towards the City and West End.

Tenure: Leasehold (111 years remaining)

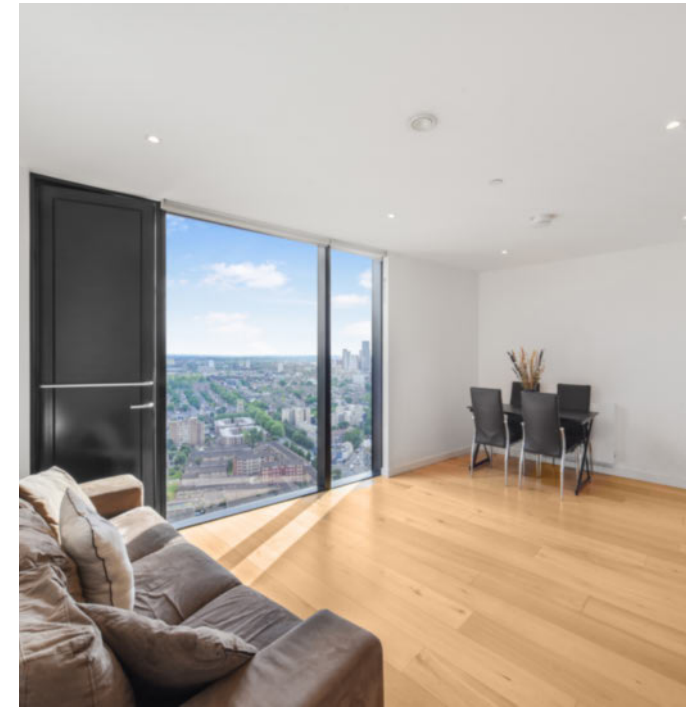
Local Authority: Southwark

Ground Rent: £375 p.a.

Council Tax Band: E

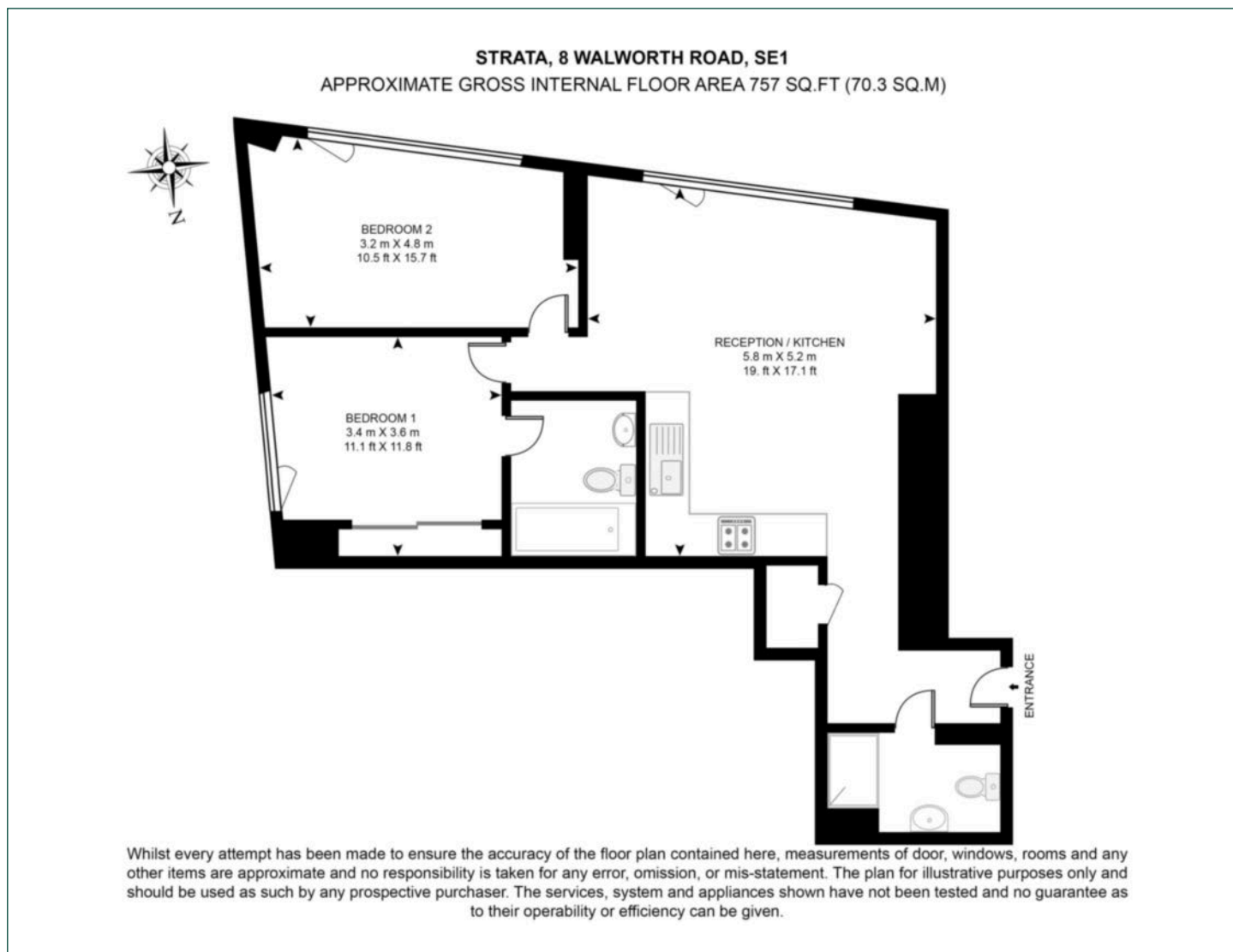
Service Charge: Approx. £5,390 p.a.

EPC: B



Floorplan

757 sq ft | 70.3 sq m



Elephant & Castle

One The Elephant, 5 St Gabriel Walk, London, SE1 6FG

Sales

020 3869 2898 | eandc.sales@chaseevans.com

We're here to help.

IMPORTANT NOTICE - These particulars have been prepared in good faith and they are not intended to constitute part of an offer or contract. We have not performed a structural survey on this property and the services, appliances and specific fittings have not been tested. All photographs, measurements, floor plans and distances referred to are given as a guide and should not be relied upon.

chaseevans.com

 Chase Evans