



## Hurlock Heights, Elephant Park, Elephant & Castle, SE17

Price **£520 per week** | Furnished



# Hurlock Heights, Elephant Park, Elephant & Castle, SE17



Studio



1 Bathroom



1 Reception



Spacious Balcony



24-Hour Concierge



Gymnasium



Rooftop Terrace



Communal  
Landscaped Gardens



0.2 MI Elephant &  
Castle

Spacious studio apartment set within Hurlock Heights, part of Elephant Park development SE17. Comprising a bespoke open-plan fitted kitchen with fully integrated appliances, a bright living/dining area with full height windows leading to a sizeable balcony, a large sleeping area with a fitted wardrobe, and a contemporary bathroom suite. Featuring wood flooring, modern appliances and recessed lighting throughout.

Residents benefit from an array of facilities which include a gymnasium, communal gardens, secure cycle storage, rooftop terrace and a 24-hour concierge service.

The nearby Sayer Street runs through the development and is home to several restaurants, coffee houses, and shops, including a mini plant and flower garden centre. The street provides a quiet pedestrian access to the park and Elephant Springs fountains.

Elephant Park is close to a multitude of local places of interest such as the excellent Merkato Metropolitan, a 45,000 square food market with a mixture of Italian and London based producers offering an astonishing array of quality food and drinks in an attractive and lively indoor space complete with a cinema. The nearby Elephant and Castle station provides Underground and National Rail services.



**Local Authority:**

Southwark

**Council Tax Band:**

D

**EPC:**

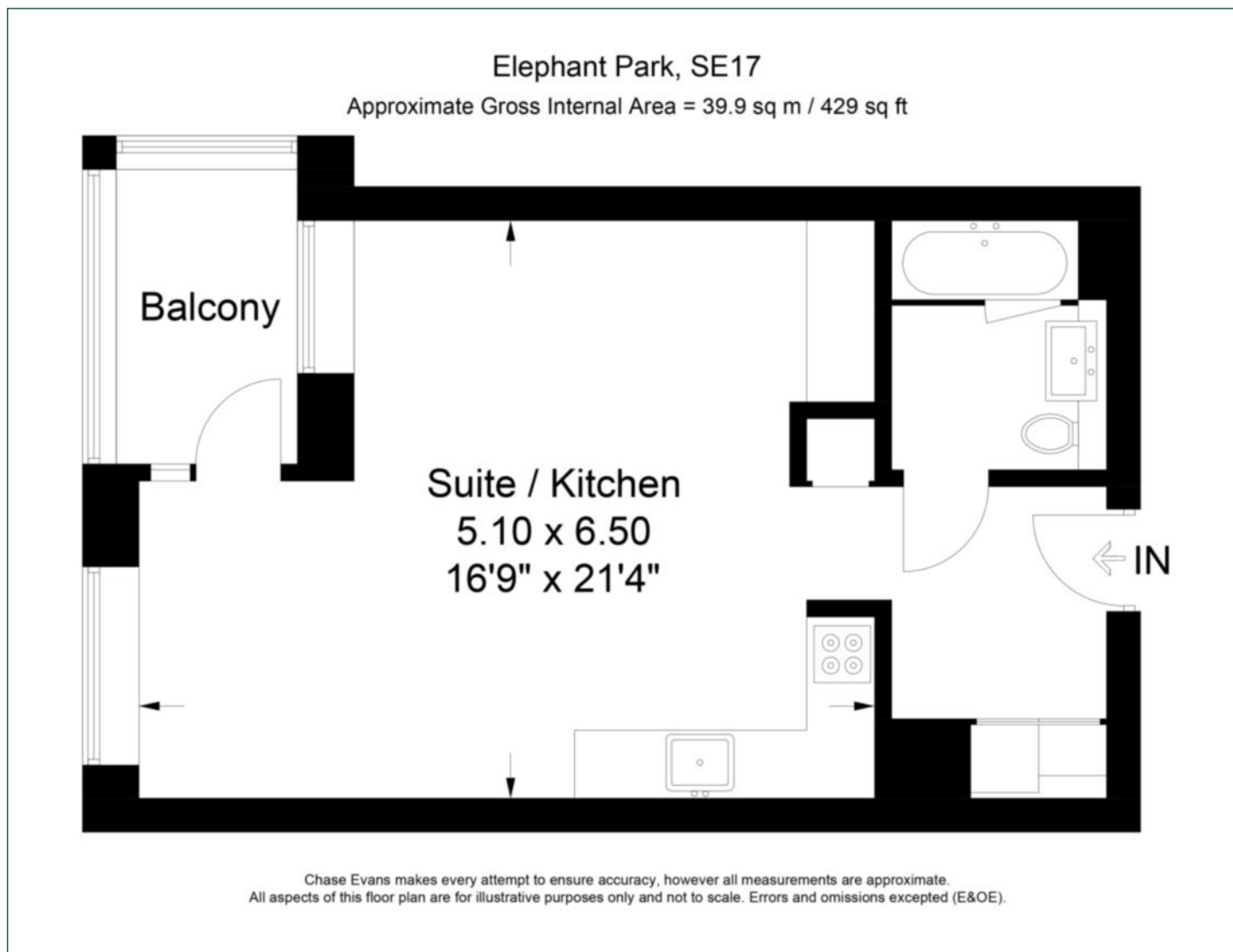
B

**Security deposit:**

equivalent to 5 weeks' rent

# Floorplan

429 sq ft | 39.9 sq m



## Elephant & Castle

One The Elephant, 5 St Gabriel Walk, London, SE1 6FA

## Lettings

020 3869 2888 | [eandc.lettings@chaseevans.com](mailto:eandc.lettings@chaseevans.com)

## We're here to help.

IMPORTANT NOTICE - These particulars have been prepared in good faith and they are not intended to constitute part of an offer or contract. We have not performed a structural survey on this property and the services, appliances and specific fittings have not been tested. All photographs, measurements, floor plans and distances referred to are given as a guide and should not be relied upon.

[chaseevans.com](https://www.chaseevans.com)

 Chase Evans