

Weymouth Building, Elephant Park, Elephant & Castle, SE17

Price **£725 per week** | Furnished



Weymouth Building, Elephant Park, Elephant & Castle, SE17



2 Bedrooms



2 Bathrooms



1 Reception



Balcony



24-Hour Concierge



Secure Cycle Storage



Gymnasium



Communal Roof Terrace



0.3 MI Elephant & Castle

Spacious 837 sq ft two bedroom, two bathroom property with a balcony set in the Weymouth Building, Elephant Park SE17. The spacious and light open plan kitchen/ living room features wood flooring, recessed lighting and floor-to-ceiling glazing with doors leading to a generous balcony. The modern kitchen is fitted with top of the range appliances and has ample dining space. There are two double bedrooms with fitted storage space, a master en suite and contemporary main bathroom.

Elephant Park provides access to a 24-hour concierge, gym, communal roof terrace and gardens and cycle storage. Residents will enjoy the proximity to an abundance of local amenities - gardens, cafe's, pizzerias, bars, restaurants and the Elephant and Castle Shopping Centre which can be reached within a few minutes. The nearest transport hub is Elephant and Castle station serviced by Underground and rail services, a 5 minute walk away from the development.

Local Authority: Southwark Council

Council Tax Band: E

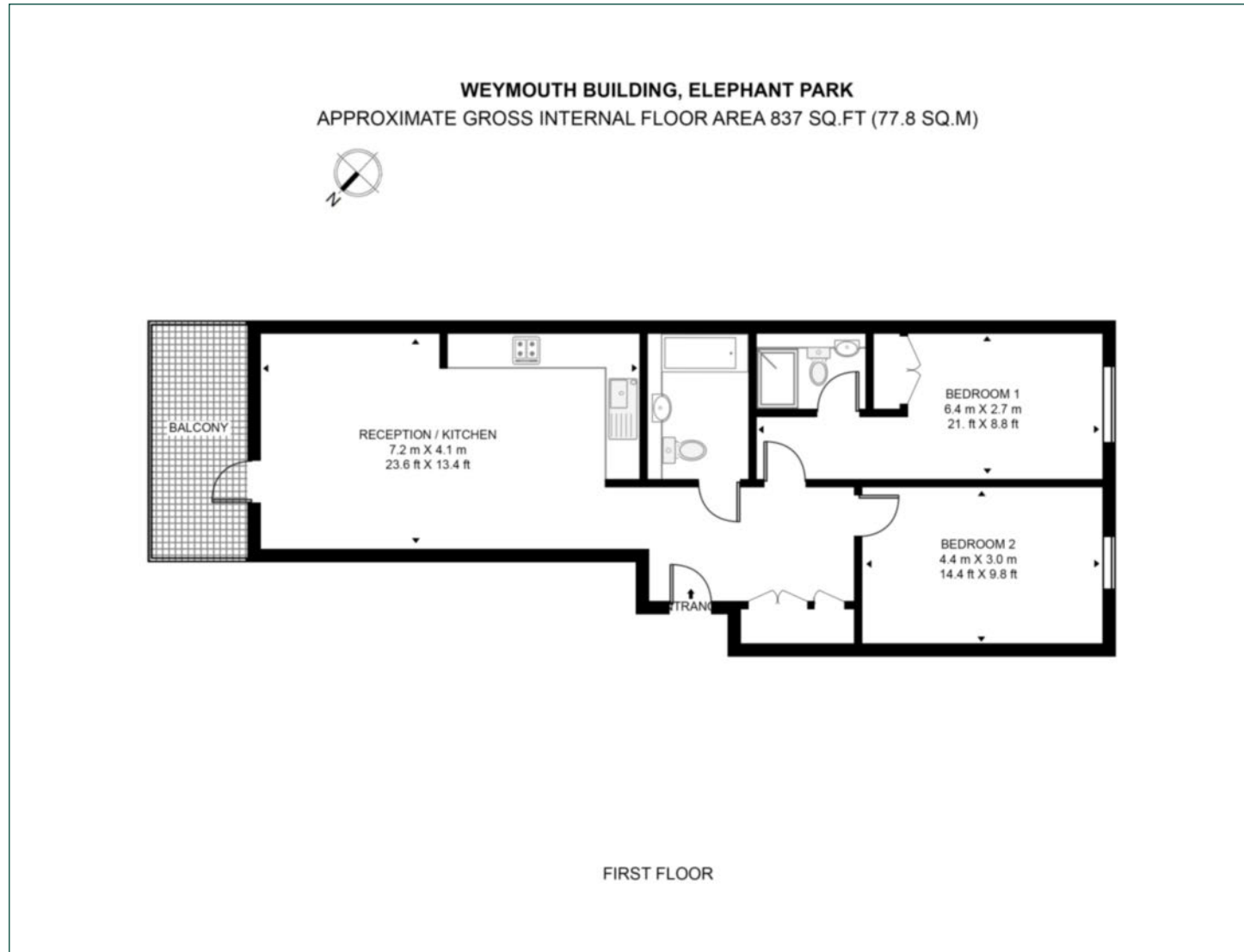
EPC: B

Security deposit: equivalent to 5 weeks' rent



Floorplan

837 sq ft | 77.8 sq m



Elephant & Castle

One The Elephant, 5 St Gabriel Walk, London, SE1 6FA

Lettings

020 3869 2888 | eandc.lettings@chaseevans.com

We're here to help.

IMPORTANT NOTICE - These particulars have been prepared in good faith and they are not intended to constitute part of an offer or contract. We have not performed a structural survey on this property and the services, appliances and specific fittings have not been tested. All photographs, measurements, floor plans and distances referred to are given as a guide and should not be relied upon.

chaseevans.com