



Sky Gardens, Wandsworth Road, Vauxhall, SW8

Price **£575 per week** | Furnished



Sky Gardens, Wandsworth Road, Vauxhall, SW8



1 Bedroom



1 Bathroom



1 Reception



Winter Garden



Gymnasium



Local Amenities



24-Hour Concierge



0.2 MI Nine Elms

A fantastic one bedroom apartment with a winter garden set within Sky Gardens, a prominent contemporary development in Nine Elms SW8. The generous open plan living room extends onto a fully integrated kitchen and features modern appliances, wood floors and extensive glazing affording wide city views. The ample size bathroom has a wardrobe and there is a stylish bathroom suite.

Sky Gardens provides 24-hour concierge services and access to a gym and a communal roof top terrace. There are several amenities located nearby

including restaurants, pubs and shops. The development is close to Nine Elms station, providing underground services for commutes across the capital.



Local Authority:

Lambeth London

Council Tax Band:

E

EPC:

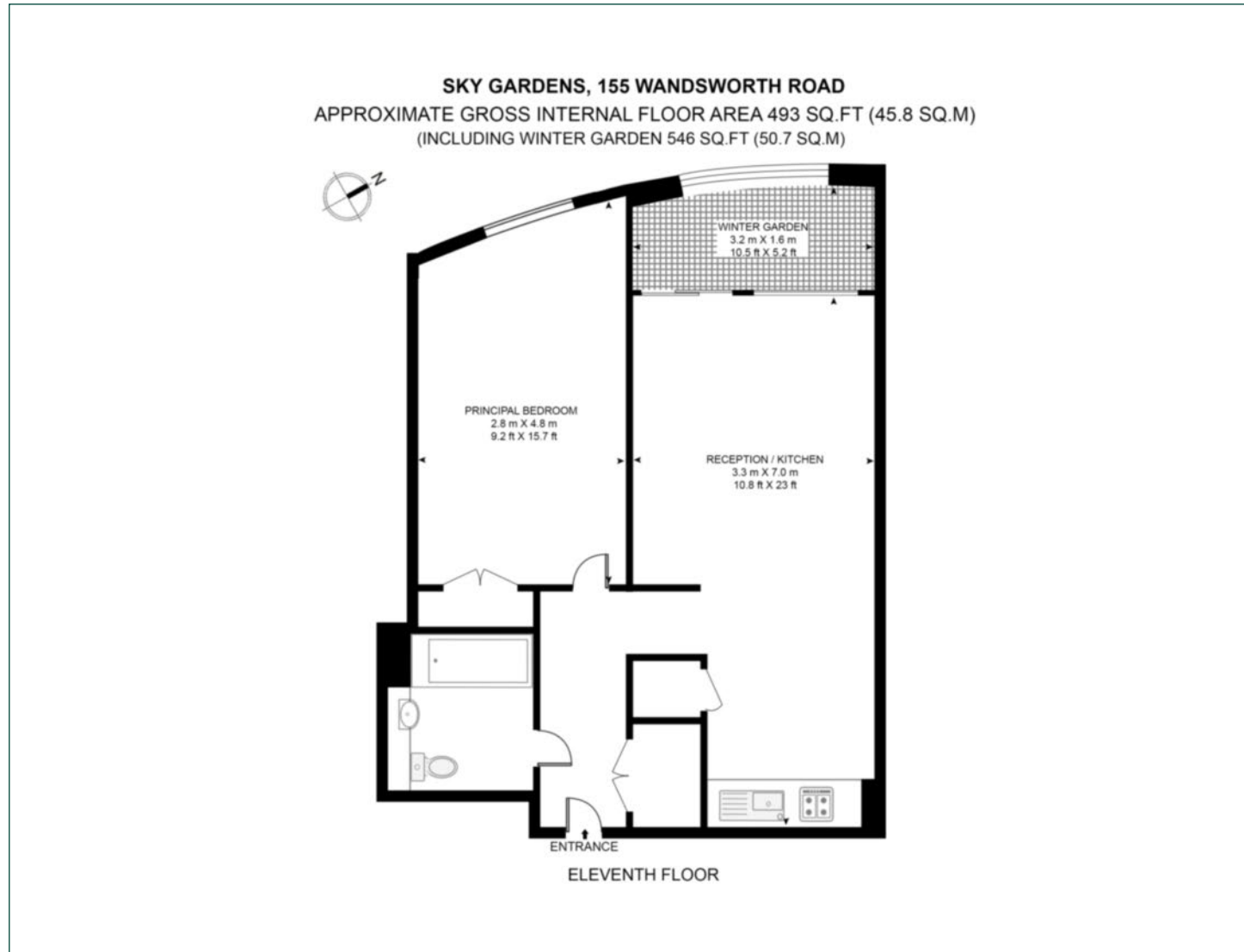
B

Security deposit:

equivalent to 5 weeks' rent

Floorplan

493 sq ft | 45.8 sq m



Elephant & Castle

One The Elephant, 5 St Gabriel Walk, London, SE1 6FG

Lettings

020 3869 2888 | eandc.lettings@chaseevans.co.uk

We're here to help.

IMPORTANT NOTICE - These particulars have been prepared in good faith and they are not intended to constitute part of an offer or contract. We have not performed a structural survey on this property and the services, appliances and specific fittings have not been tested. All photographs, measurements, floor plans and distances referred to are given as a guide and should not be relied upon.

[chaseevans.com](https://www.chaseevans.com)