



The Strata, Walworth Road, Elephant & Castle, SE1

Price **£500 per week** | Furnished



The Strata, Walworth Road, Elephant & Castle, SE1



1 Bedroom



1 Bathroom



1 Reception



Bicycle Storage



24-Hour Concierge



Local Amenities

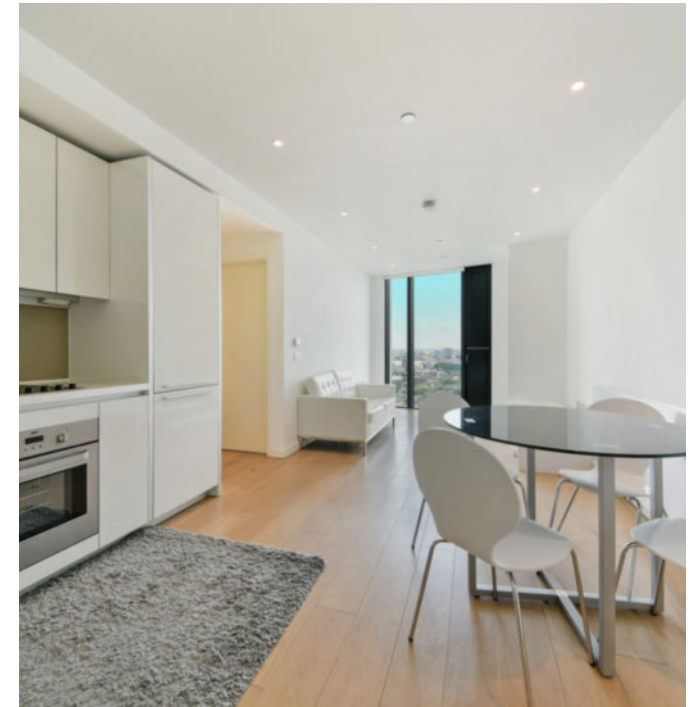


0.2 MI Elephant & Castle

A modern one bedroom apartment situated within the spectacular development The Strata, Elephant & Castle SE1. Comprises a spacious open plan living area with a fully-integrated kitchen, wood flooring, and floor-to-ceiling windows with London skyline views. Contemporary fitted bathroom and sizable master bedroom with ample storage.

Residents benefit from an array of facilities which include a secure cycle storage and a 24-hour concierge service.

There are several amenities located nearby including bars, cafés, restaurants and the Elephant and Castle Shopping Centre. The development is located only 0.2 miles from Elephant & Castle National Rail and Underground stations, providing Underground and Rail services for commutes towards the City and West End. The property is serviced by Thameslink, Southeastern, Bakerloo and Northern Line, opening up a plethora of transport links.



Local Authority:

Southwark Council

Council Tax Band:

E

EPC:

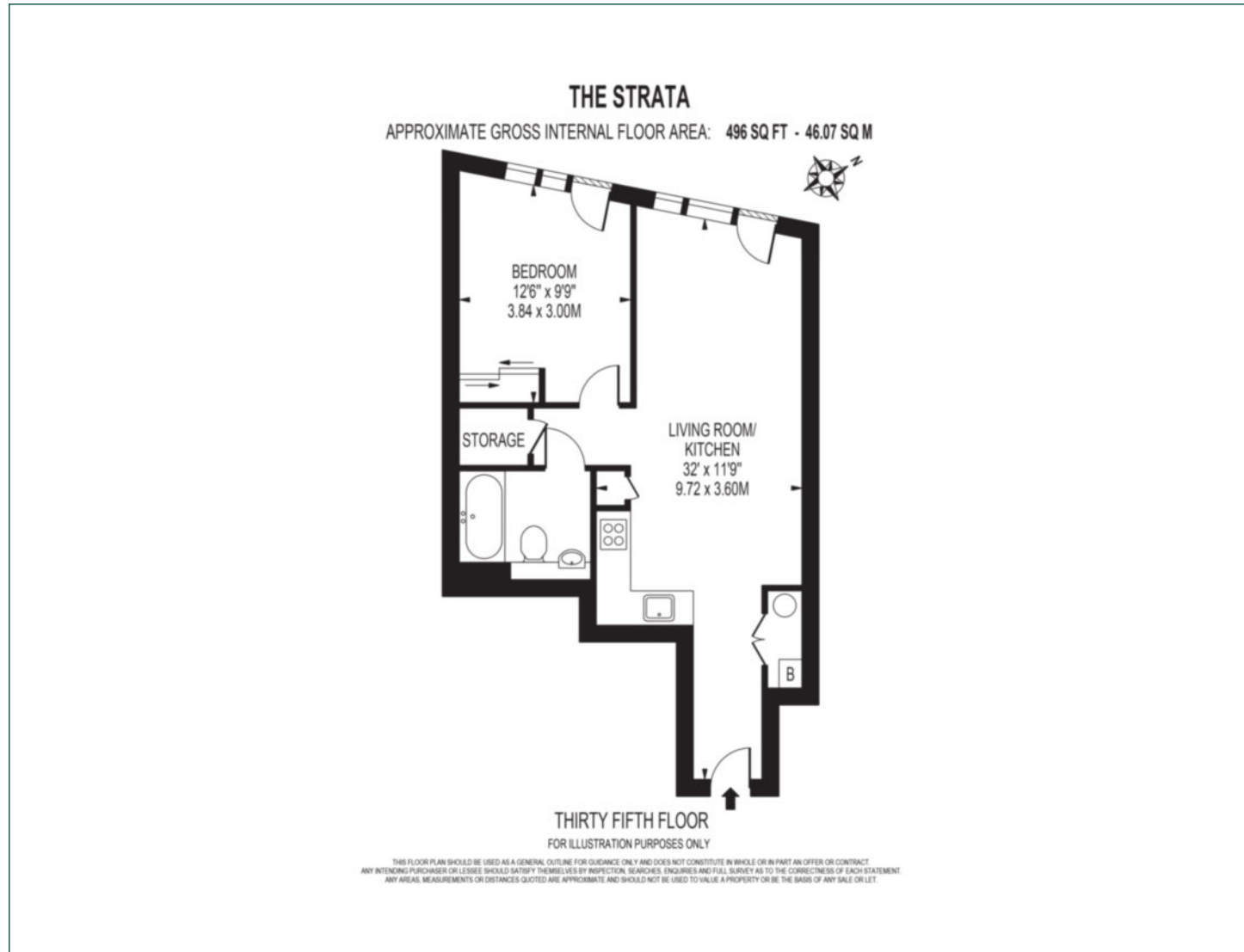
B

Security deposit:

equivalent to 5 weeks' rent

Floorplan

496 sq ft | 46.07 sq m



Elephant & Castle

One The Elephant, 5 St Gabriel Walk, London, SE1 6FA

Lettings

020 3869 2888 | eandc.lettings@chaseevans.co.uk

We're here to help.

IMPORTANT NOTICE - These particulars have been prepared in good faith and they are not intended to constitute part of an offer or contract. We have not performed a structural survey on this property and the services, appliances and specific fittings have not been tested. All photographs, measurements, floor plans and distances referred to are given as a guide and should not be relied upon.

chaseevans.com