



The Strata, Walworth Road, Elephant & Castle, SE1

Price **£440 per week** | Furnished



The Strata, Walworth Road, Elephant & Castle, SE1



Studio



1 Bathroom



1 Reception



24-Hour Concierge



Secure Cycle Storage



Local Amenities



0.2 MI Elephant & Castle

Modern studio apartment with spectacular views from the 32nd floor of the iconic Strata building, in Elephant and Castle, SE1. This impressive apartment boasts a bright and spacious open-plan living / sleeping area with floor-to-ceiling glazing, wood flooring, recessed lighting, a fully fitted integrated kitchen and luxury bathroom suite with a shower. Additional fitted storage space is available in the hallway.

Residents benefit from an array of facilities which include a secure cycle storage and a 24-hour concierge service. There are excellent amenities

located nearby including the Castle Centre gym and swimming pool, bars, cafés and an eclectic mix of restaurants. The development is located just 0.2 miles from Elephant & Castle National Rail and Underground stations, providing Underground and Rail services for commutes towards the City and West End. The property is serviced by Thameslink, South-eastern, Bakerloo and Northern Line, opening up a convenient choice of transport links.

Local Authority: Southwark Council

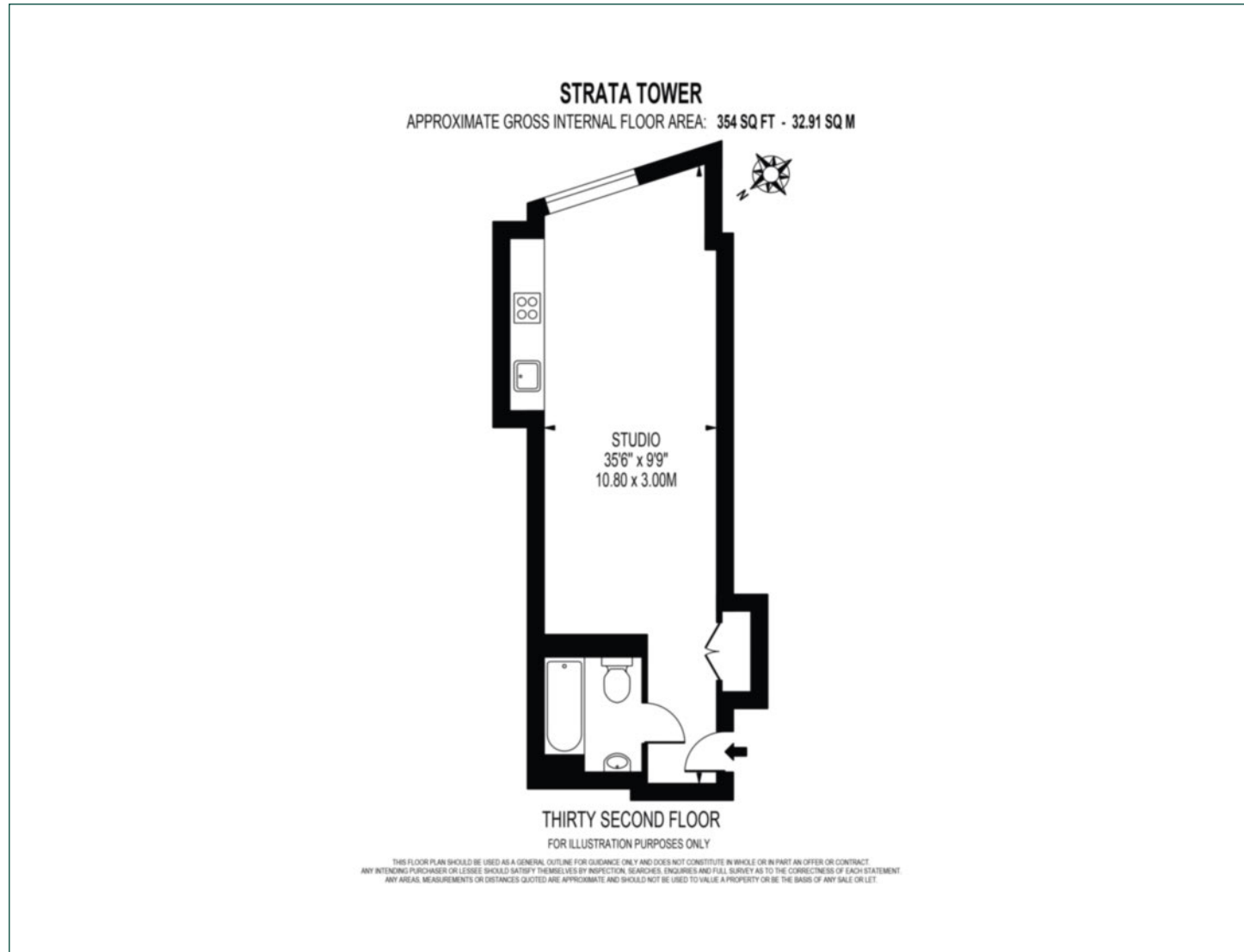
Council Tax Band: D

EPC: B

Security deposit: equivalent to 5 weeks' rent

Floorplan

354 sq ft | 32.91 sq m



Elephant & Castle

One The Elephant, 5 St Gabriel Walk, London, SE1 6FA

Lettings

020 3869 2888 | eandc.sales@chaseevans.co.uk

We're here to help.

IMPORTANT NOTICE - These particulars have been prepared in good faith and they are not intended to constitute part of an offer or contract. We have not performed a structural survey on this property and the services, appliances and specific fittings have not been tested. All photographs, measurements, floor plans and distances referred to are given as a guide and should not be relied upon.

[chaseevans.com](https://www.chaseevans.com)