



Mansfield Point, Trafalgar Place, Rodney Road, Elephant & Castle, SE17

OIEO **£800,000** | Leasehold



Mansfield Point, Trafalgar Place, Rodney Road, Elephant & Castle, SE17



2 Bedrooms



2 Bathrooms



1 Reception



Balcony



Secure Cycle Storage



Communal Roof Terrace



Local Amenities



24-Hour Concierge



0.4 MI Elephant & Castle

Stunning two bedroom, two bathroom, dual aspect apartment set within the highly sought-after Rutherford Heights in Trafalgar Place.

Accommodation includes a spacious, double-aspect reception, stylish open-plan kitchen with integrated appliances, wood flooring, floor to ceiling glazing, recessed lighting, two large double bedrooms with the master including built-in wardrobe and en-suite, under floor heating and ample storage throughout. In addition to the large south-facing balcony is a west-facing roof terrace with access off the bedroom.

Residents benefit from 24-hour concierge, communal roof terraces, cycle storage, and the fabulous transport links and local amenities this excellent location affords. Trafalgar Place is conveniently located for the restaurants and bars of Elephant Park.

Tenure: Leasehold (241 years remaining)

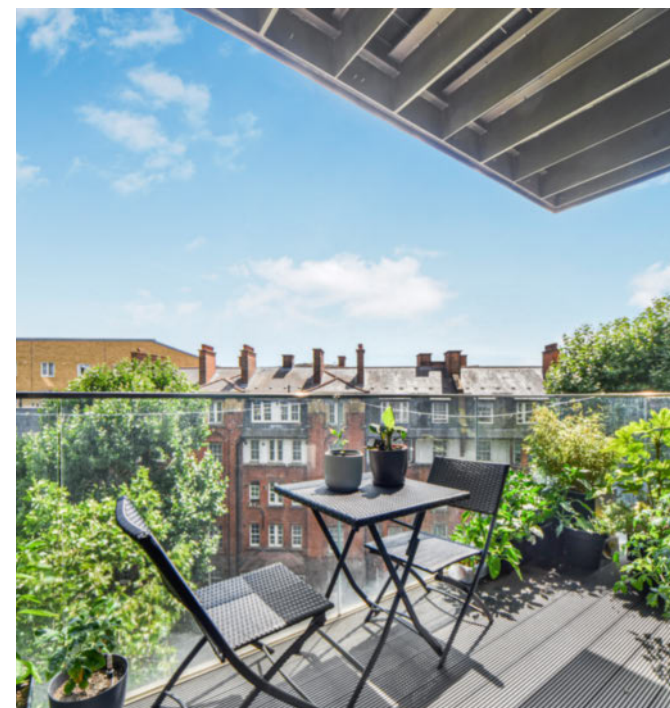
Local Authority: Southwark Council

Ground Rent: £375 p.a.

Council Tax Band: E

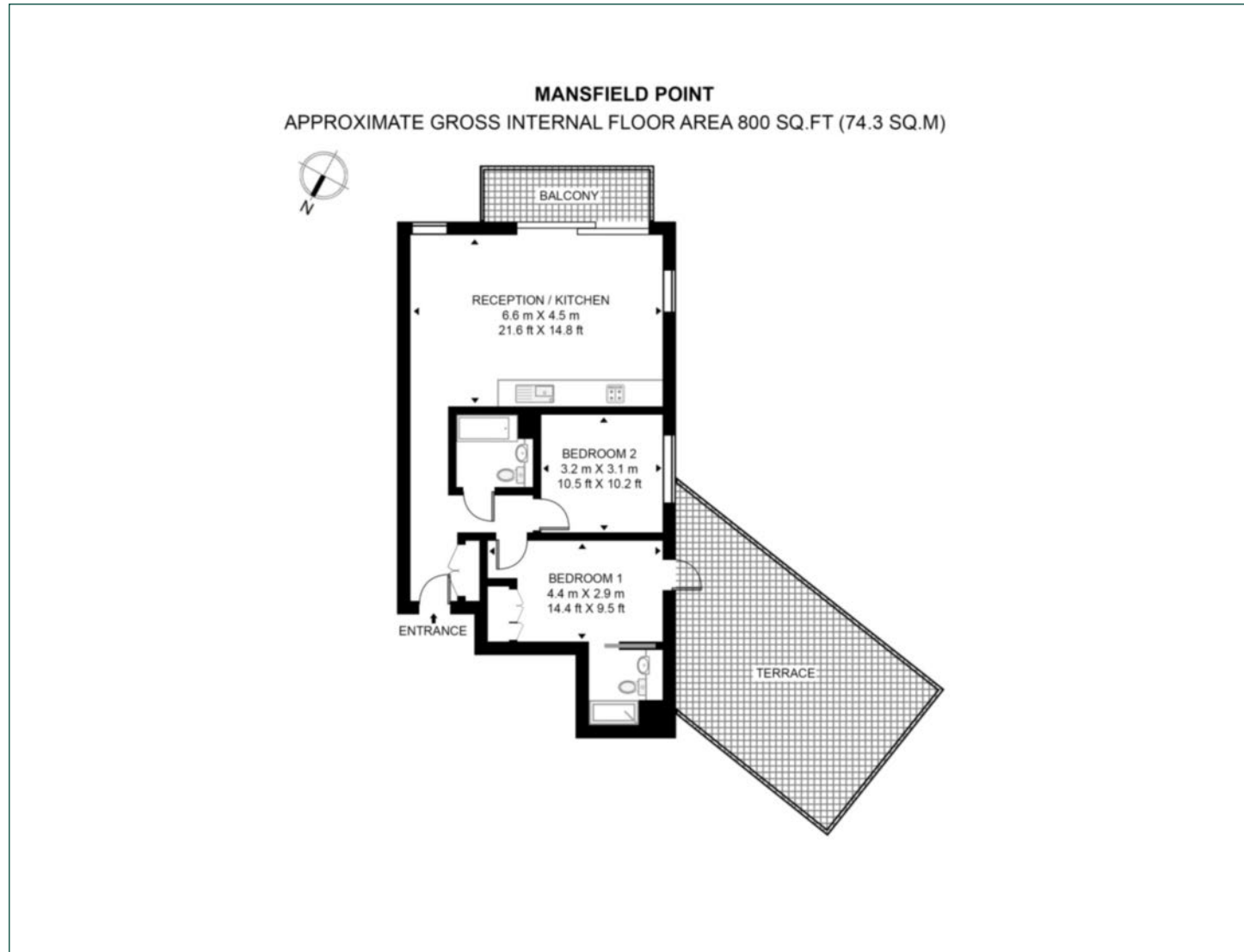
Service Charge: £4,087 p.a.

EPC: B



Floorplan

800 sq ft | 74.3 sq m



Elephant & Castle

One The Elephant, 5 St Gabriel Walk, London, SE1 6FA

Sales

020 3869 2888 | eandc.sales@chaseevans.co.uk

We're here to help.

IMPORTANT NOTICE - These particulars have been prepared in good faith and they are not intended to constitute part of an offer or contract. We have not performed a structural survey on this property and the services, appliances and specific fittings have not been tested. All photographs, measurements, floor plans and distances referred to are given as a guide and should not be relied upon.

chaseevans.com