



## One BlackFriars, Blackfriars Road, Southwark, SE1

Price **£800 per week** | Furnished



# One BlackFriars, Blackfriars Road, Southwark, SE1



Studio



1 Bathroom



1 Reception



Winter Garden



Gymnasium



Spa Facilities



Cinema Room



24-Hour Concierge



0.2 MI Southwark Station

Stunning studio apartment set within the ground breaking One Blackfriars, SE1. Comprising an elegant fitted kitchen with integrated appliances, a bright & airy living area with floor-to-ceiling windows opening to a private winter garden. An inviting sleeping area with fitted wardrobes and a contemporary shower room suite plus additional fitted storage in the hall.

Residents enjoy use of 24-hour concierge service, spa, swimming pool, private cinema and a fitness suite overlooking the private gardens. Locally, this property is merely 2mins from Blackfriars National

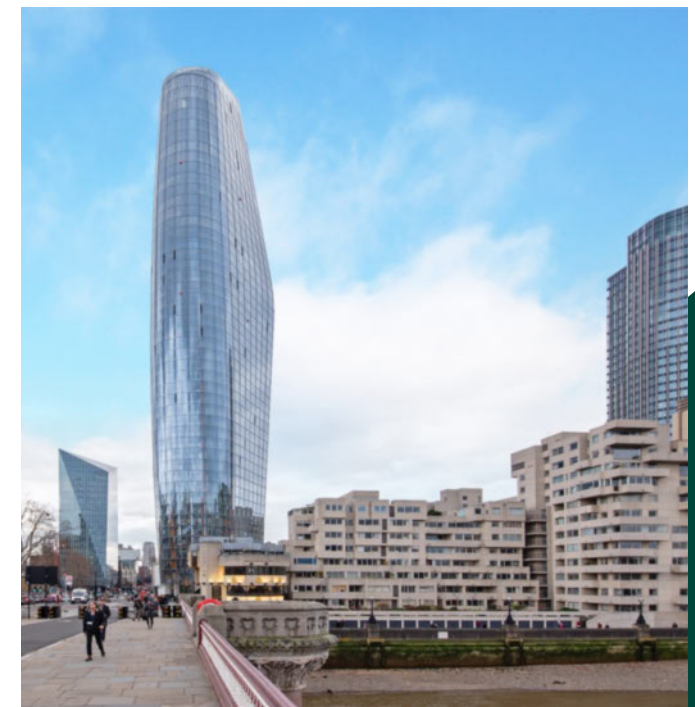
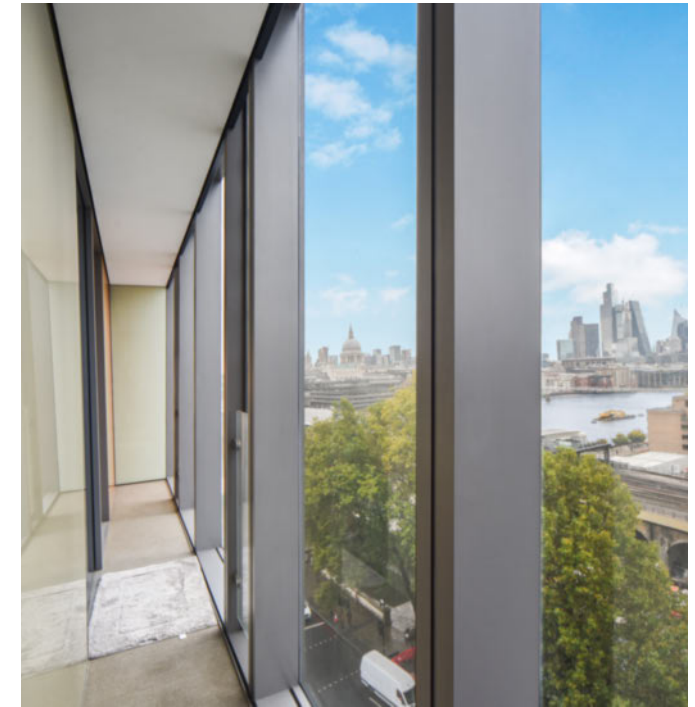
Rail station, 6mins from Blackfriars Underground for Circle, District, Thameslink and South Eastern journeys. Just over half a mile away are Waterloo Underground and Rail Stations for all Bakerloo, Northern, Jubilee, Waterloo & City and South Western Rail services.

**Local Authority:** Southwark Council

**Council Tax Band:** F

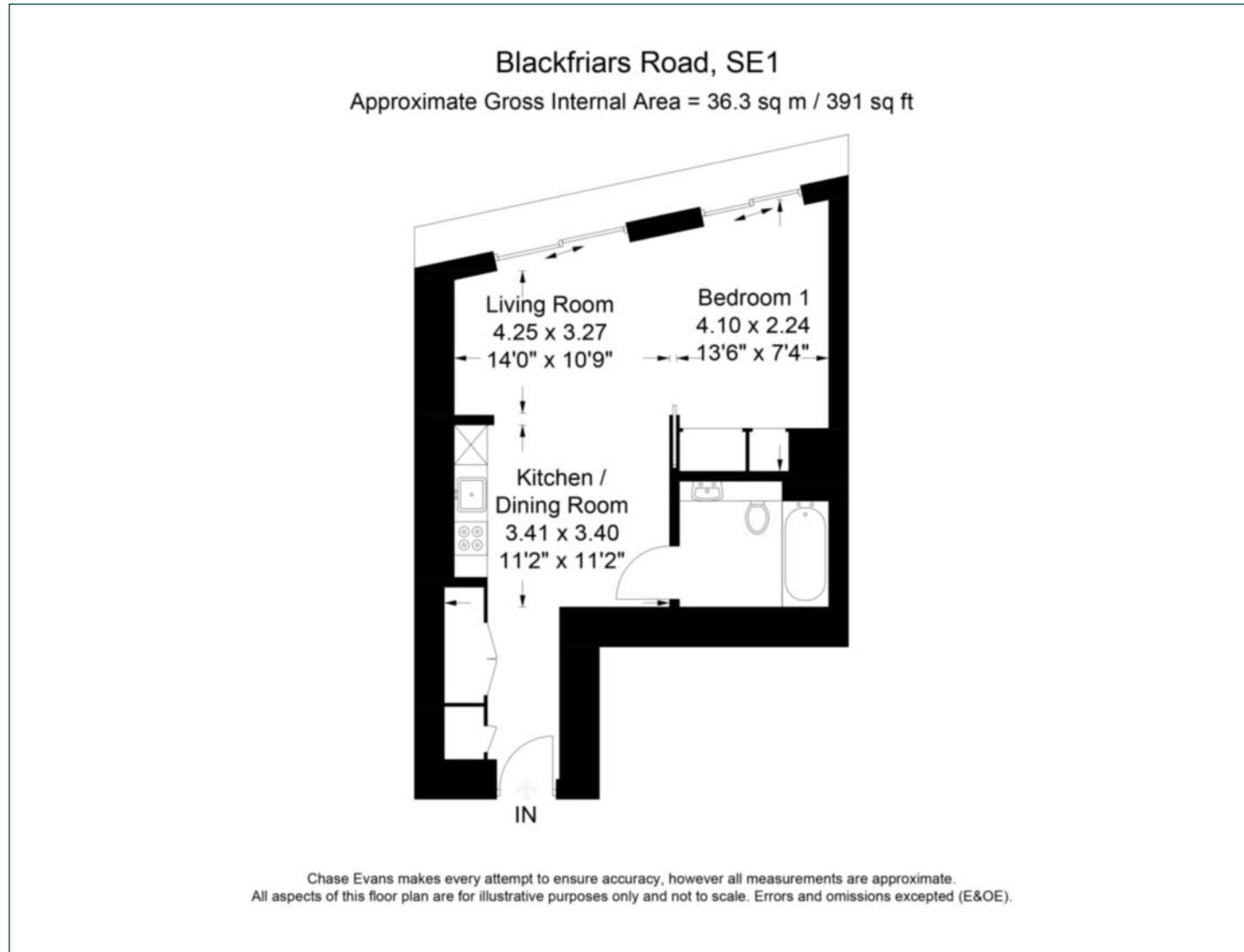
**EPC:** B

**Security deposit:** equivalent to 5 weeks' rent



# Floorplan

391 sq ft | 36.3 sq m



## Elephant & Castle

One The Elephant, 5 St Gabriel Walk, London, SE1 6FA

## Lettings

020 3869 2888 | [eandc.lettings@chaseevans.co.uk](mailto:eandc.lettings@chaseevans.co.uk)

## We're here to help.

IMPORTANT NOTICE - These particulars have been prepared in good faith and they are not intended to constitute part of an offer or contract. We have not performed a structural survey on this property and the services, appliances and specific fittings have not been tested. All photographs, measurements, floor plans and distances referred to are given as a guide and should not be relied upon.

[chaseevans.com](https://www.chaseevans.com)