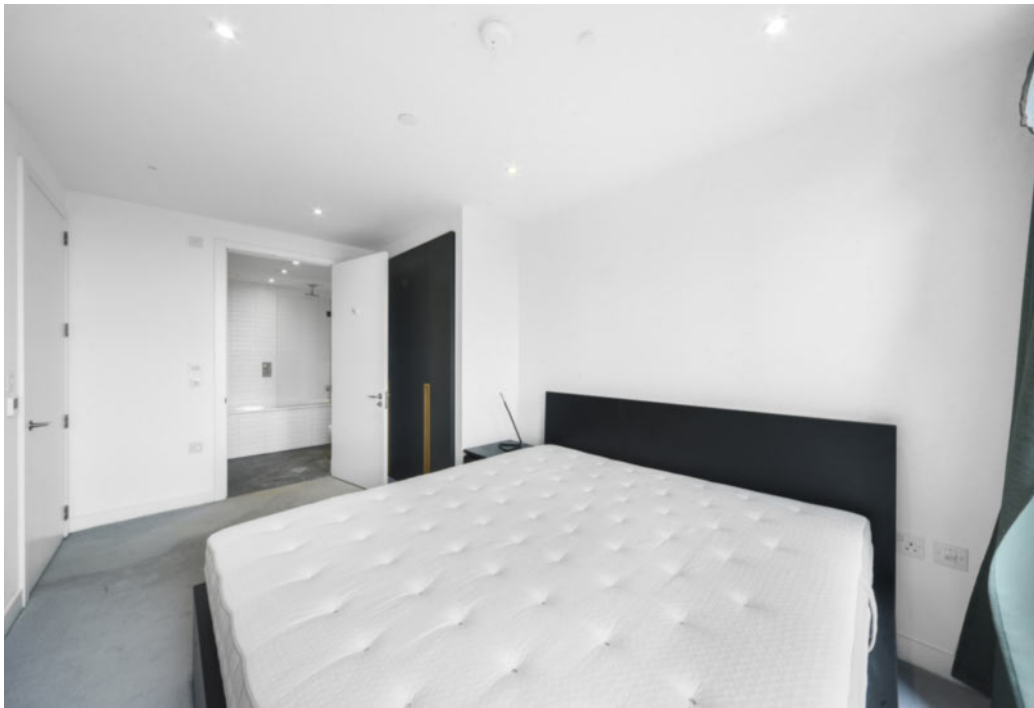











Two Fifty One, Southwark Bridge Road, Southwark, SE1

Asking price **£560,000** | Leasehold



Two Fifty One, Southwark Bridge Road, Southwark, SE1

-  1 Bedroom
-  1 Bathroom
-  1 Reception
-  Gymnasium
-  Local Amenities
-  24-Hour Concierge
-  0.2 MI Elephant & Castle

Fantastic one bedroom apartment in the iconic Two Fifty One development, in the heart of Southwark. The property includes an inviting living and dining area, fitted kitchen with integrated appliances, wood flooring, full length windows, recessed lighting, fitted bedroom storage and stylish bathroom suite. Ample storage throughout.

Residents have access to a function room, gym, 24-hour concierge, 11-seat private cinema, and a private lounge. There are a multitude of local amenities nearby including cafes, pubs, shops and restaurants. Newington Gardens and Dickens

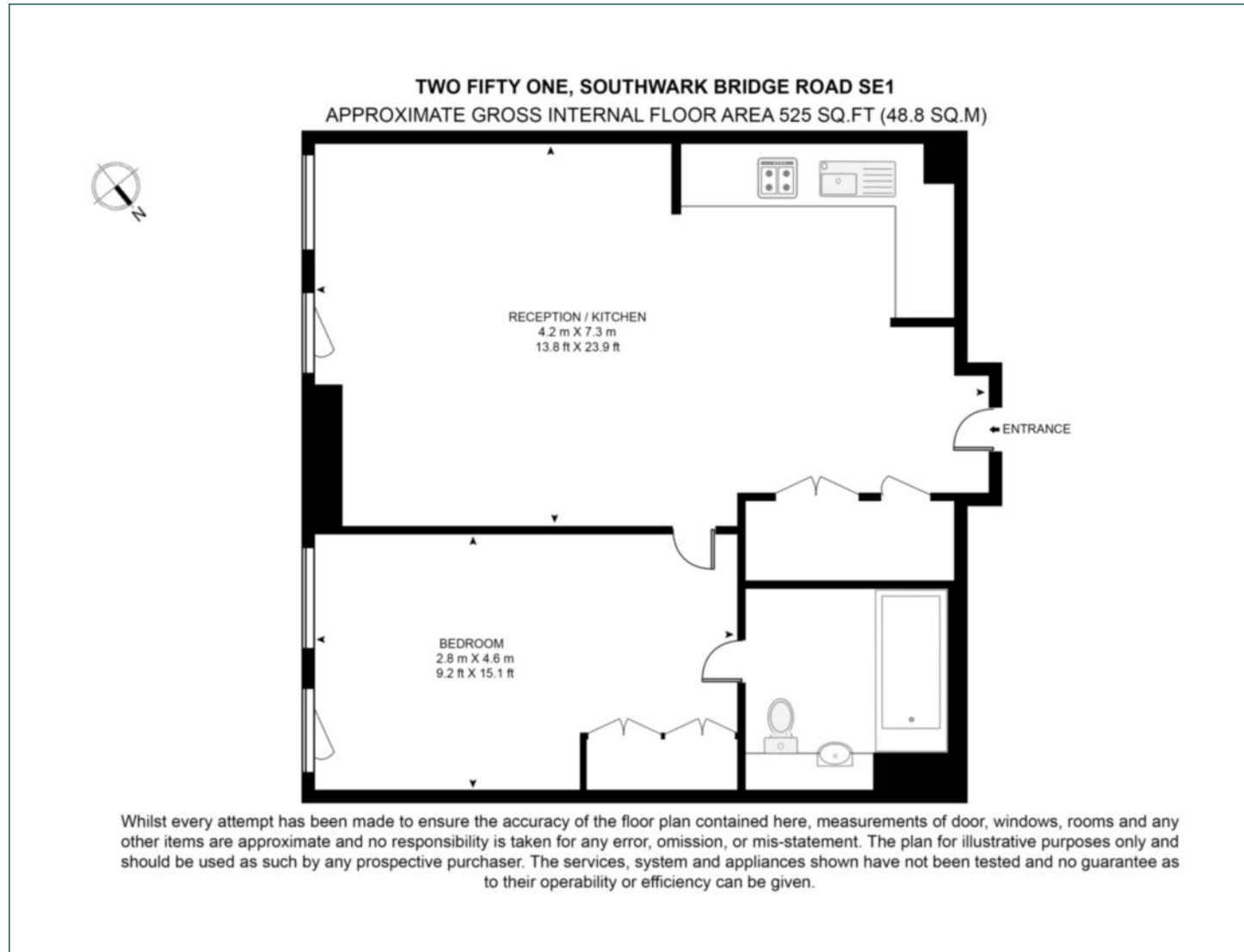
Fields offer nearby green spaces. The development is located near Elephant and Castle and Southwark Underground stations, providing valuable transport links for commutes towards the West End and the City.



Tenure:	Leasehold (990 years remaining)	Local Authority:	Southwark Council
Ground Rent:	£450 p.a.	Council Tax Band:	D
Service Charge:	£3,163 p.a.	EPC:	B

Floorplan

525 sq ft | 48.8 sq m



Elephant & Castle

One The Elephant, 5 St Gabriel Walk, London, SE1 6FG

Sales

020 3869 2898 | eandc.sales@chaseevans.com

We're here to help.

IMPORTANT NOTICE - These particulars have been prepared in good faith and they are not intended to constitute part of an offer or contract. We have not performed a structural survey on this property and the services, appliances and specific fittings have not been tested. All photographs, measurements, floor plans and distances referred to are given as a guide and should not be relied upon.

chaseevans.com

 Chase Evans