



Avershaw House, Putney Square, Chartfield Avenue, SW15

Asking price **£475,000** | Leasehold



Avershaw House, Putney Square, Chartfield Avenue, SW15



1 Bedroom



1 Bathroom



1 Reception



Balcony



Gymnasium



Local Amenities



Concierge Service

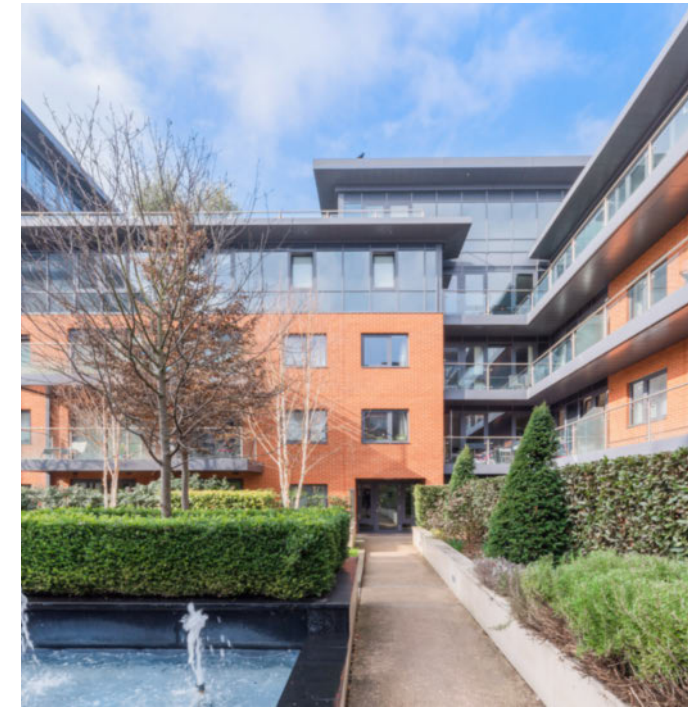


0.3 MI Putney

Impressive one bedroom apartment set within the popular Putney Square development, off Putney Hill, SW15. This spectacular property comprises a spacious living area, modern fully integrated kitchen, large private balcony, generous bedroom with fitted wardrobes, pristine bathroom suite and ample storage space throughout.

Residents' further enjoy access to a dedicated Concierge desk and private on-site gymnasium. Local amenities include an impressive array of restaurants, shops and bars just moments away. Ideally located close to Putney tube and National

Rail stations; commutes to areas such as Victoria Station is just 25mins from the property.



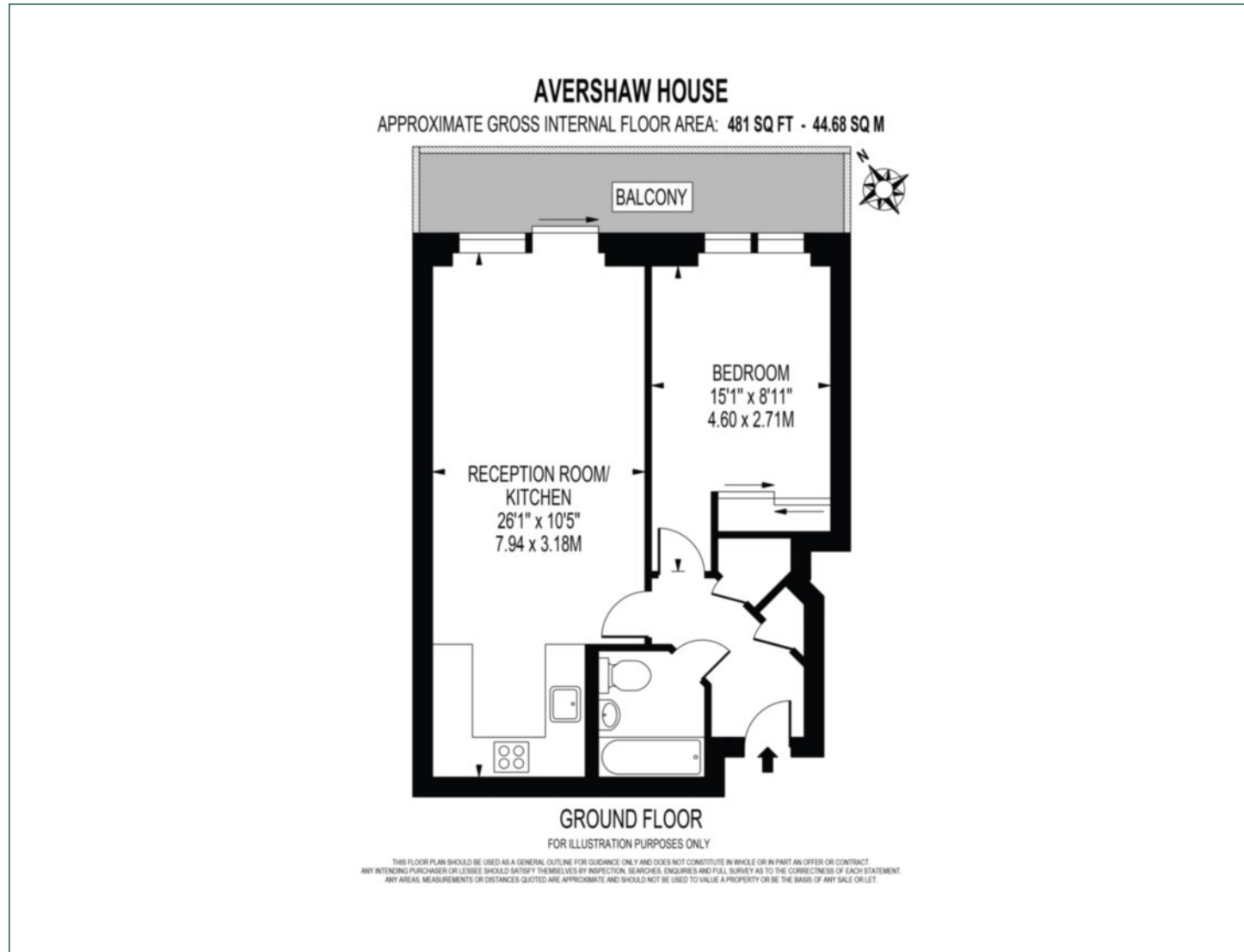
Tenure: Leasehold (142 years remaining) **Local Authority:** Wandsworth London

Ground Rent: £250 p.a. **Council Tax Band:** E

Service Charge: £2,979 p.a. **EPC:** C

Floorplan

481 sq ft | 44.68 sq m



Elephant & Castle

One The Elephant, 5 St Gabriel Walk, London, SE1 6FG

Sales

020 3869 2898 | eandc.sales@chaseevans.com

We're here to help.

IMPORTANT NOTICE - These particulars have been prepared in good faith and they are not intended to constitute part of an offer or contract. We have not performed a structural survey on this property and the services, appliances and specific fittings have not been tested. All photographs, measurements, floor plans and distances referred to are given as a guide and should not be relied upon.

chaseevans.com

 Chase Evans