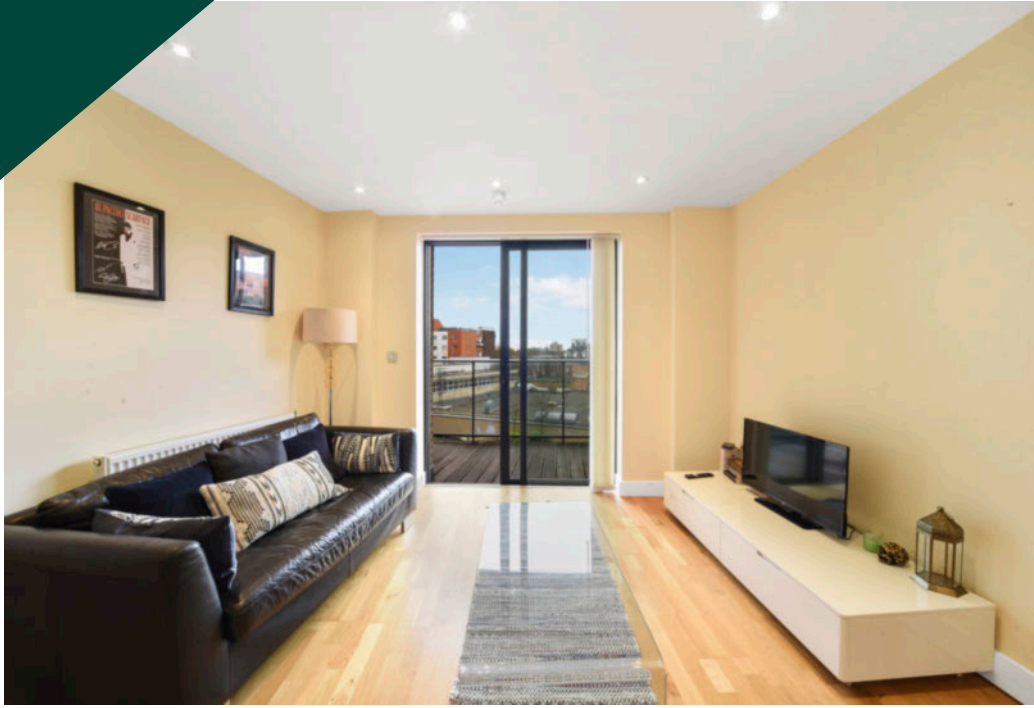


Arc House, Tanner Street, Southwark, SE1

Asking price **£500,000** | Leasehold



Arc House, Tanner Street, Southwark, SE1



1 Bedroom



1 Bathroom



1 Reception



Balcony



Local Amenities



24-Hour Concierge



0.5 MI London Bridge

Impressive one bedroom property with a south-facing balcony set within Arc House, Tower Bridge SE1. Designed by MAKE architects, The Arc development was completed in 2015. The property benefits from a bright & spacious open plan living area with full height windows leading out to the generous private balcony with views over the courtyard. Large, contemporary fitted kitchen with integrated appliances, wood flooring, double bedroom with fitted wardrobe and a tiled bathroom suite with smart fittings and fixtures. Ample hallway storage.

Residents have access to daytime concierge on-site service, secure private communal gardens. Centrally located in the heart of the fashionable and buzzing

Tower Bridge Quarter, the development is only a short walking distance to both London and Tower Bridges, chic bars, gastro pubs, and bohemian cafes, right next to Maltby Street market and only a short stroll to London's famous and fashionable Borough Market which is full of amenities.

Residents have excellent transport links via the River Taxi, and wonderful bus and over ground train network, and both London Bridge and Tower Hill Underground Stations offering a plethora of transport opportunities, Bermondsey Underground is just a short walk (12mins) away and is serviced by the Jubilee Line, along which commutes to Canary Wharf are just 5mins.

Tenure: Leasehold (years remaining)

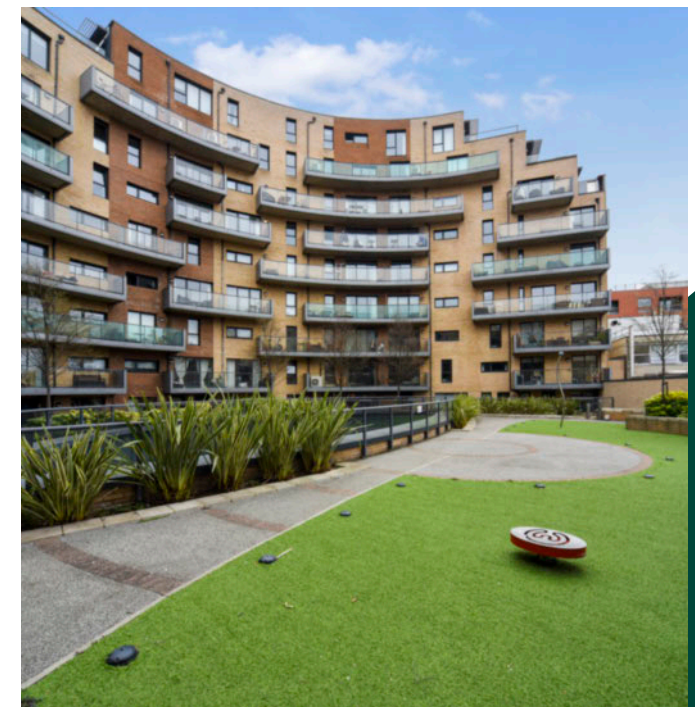
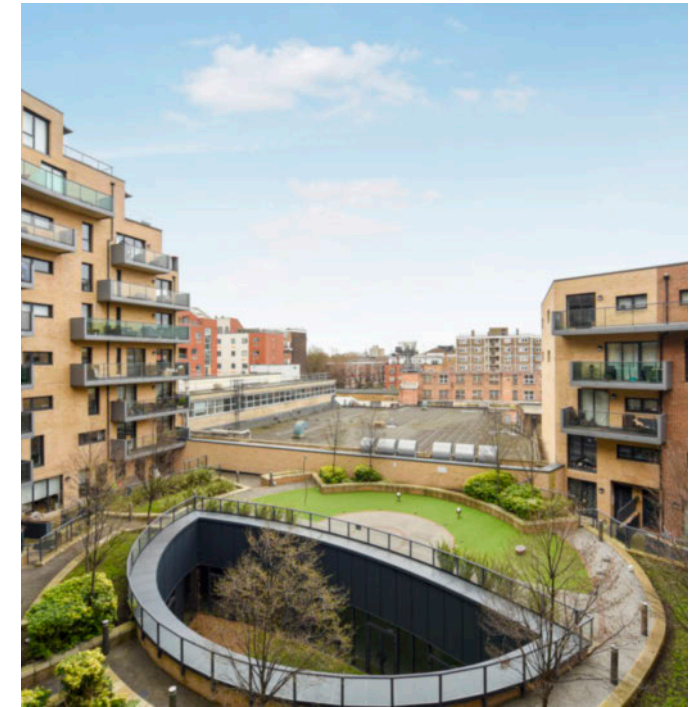
Local Authority: Southwark Council

Ground Rent: £250 p.a.

Council Tax Band: D

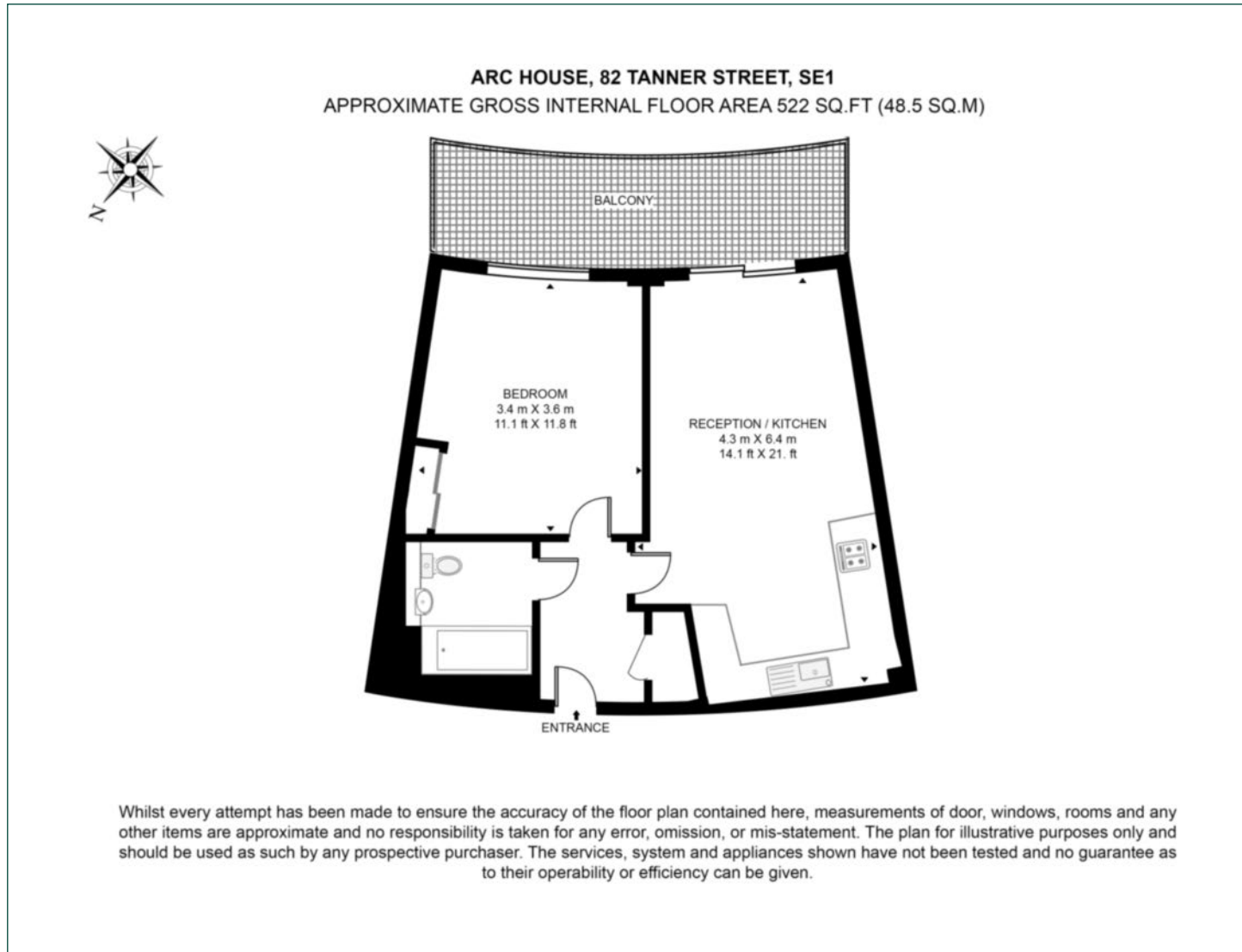
Service Charge: £3,505.32 p.a.

EPC: B



Floorplan

522 sq ft | 48.5 sq m



Elephant & Castle

One The Elephant, 5 St Gabriel Walk, London, SE1 6FA

Sales

020 3869 2888 | eandc.sales@chaseevans.co.uk

We're here to help.

IMPORTANT NOTICE - These particulars have been prepared in good faith and they are not intended to constitute part of an offer or contract. We have not performed a structural survey on this property and the services, appliances and specific fittings have not been tested. All photographs, measurements, floor plans and distances referred to are given as a guide and should not be relied upon.

[chaseevans.com](https://www.chaseevans.com)

 Chase Evans