



Tarling House, Elephant Park, Elephant & Castle, SE17

Price **£540 per week** | Furnished



Tarling House, Elephant Park, Elephant & Castle, SE17



1 Bedroom



1 Bathroom



1 Reception



Private Balcony



Bicycle Storage



Gym



Communal Garden



Concierge



0.3MI Elephant & Castle

Luxury one bed apartment set within Tarling House, Elephant Park SE17. Comprising a spacious open-plan, dual-aspect living area, a fitted kitchen with integrated appliances and floor-to-ceiling windows that open to a generous East/South-East facing balcony. Featuring wood flooring, an inviting bedroom with fitted storage and a contemporary stylish bathroom suite.

Residents also have access to a concierge service, secure bicycle storage, communal gardens and a gym. There are also several amenities located nearby including bars, cafés and restaurants. The

development is located close to Elephant & Castle National Rail and Underground stations, serviced by Thameslink, Southeastern, Bakerloo and Northern Line, opening up a plethora of transport links, for commutes towards the City and West End.

Local Authority: Southwark

Council Tax Band: D

EPC: B

Security deposit: equivalent to 5 weeks' rent

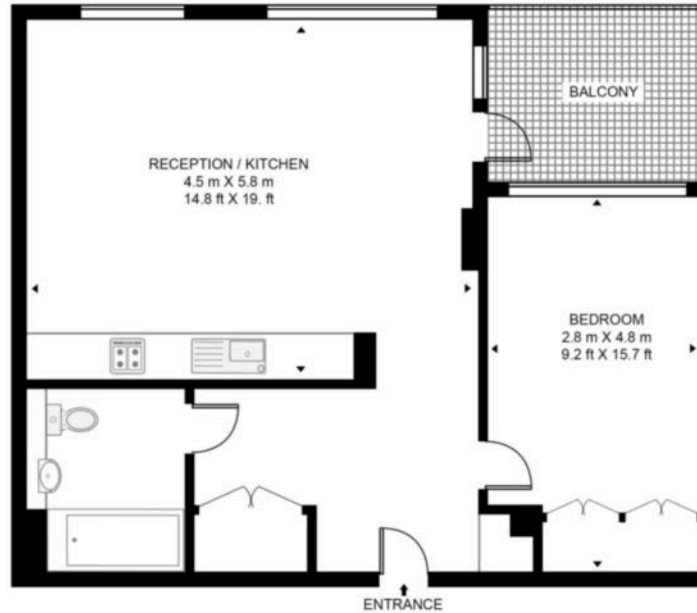


Floorplan

580 sq ft | 53.9 sq m



TARLING HOUSE, ELEPHANT PARK SE17
APPROXIMATE GROSS INTERNAL FLOOR AREA 580 SQ.FT (53.9 SQ.M)



Whilst every attempt has been made to ensure the accuracy of the floor plan contained here, measurements of door, windows, rooms and any other items are approximate and no responsibility is taken for any error, omission, or mis-statement. The plan for illustrative purposes only and should be used as such by any prospective purchaser. The services, system and appliances shown have not been tested and no guarantee as to their operability or efficiency can be given.

Elephant & Castle

One The Elephant, 5 St Gabriel Walk, London, SE1 6FA

Lettings

020 3869 2888 | eandc.lettings@chaseevans.com

We're here to help.

IMPORTANT NOTICE - These particulars have been prepared in good faith and they are not intended to constitute part of an offer or contract. We have not performed a structural survey on this property and the services, appliances and specific fittings have not been tested. All photographs, measurements, floor plans and distances referred to are given as a guide and should not be relied upon.

chaseevans.com

 Chase Evans