



The Levers, Amelia Street, Elephant & Castle, SE17

Asking price **£500,000** | Leasehold



The Levers, Amelia Street, Elephant & Castle, SE17



1 Bedroom



1 Bathroom



1 Reception



Balcony



Communal Gardens



Local Amenities



0.4 MI Elephant & Castle

Superb one bedroom property with a balcony set within this impressive development. Accommodation spans 551 sq ft and includes an open plan living room, modern fitted kitchen with integrated appliances, engineered oak flooring, floor to ceiling glazing, ample sized bedroom with fitted storage, tiled bathroom décor with smart fittings and fixtures and a large private balcony with views over the communal gardens.

The Levers is a brand new boutique development set around a beautiful tranquil landscaped courtyard within the heart of Elephant And Castle.

Zone One underground and mainline stations are moments away together with shopping facilities and a fine selection of independent cafes, bars and restaurants.

Tenure: Leasehold (244 years remaining)

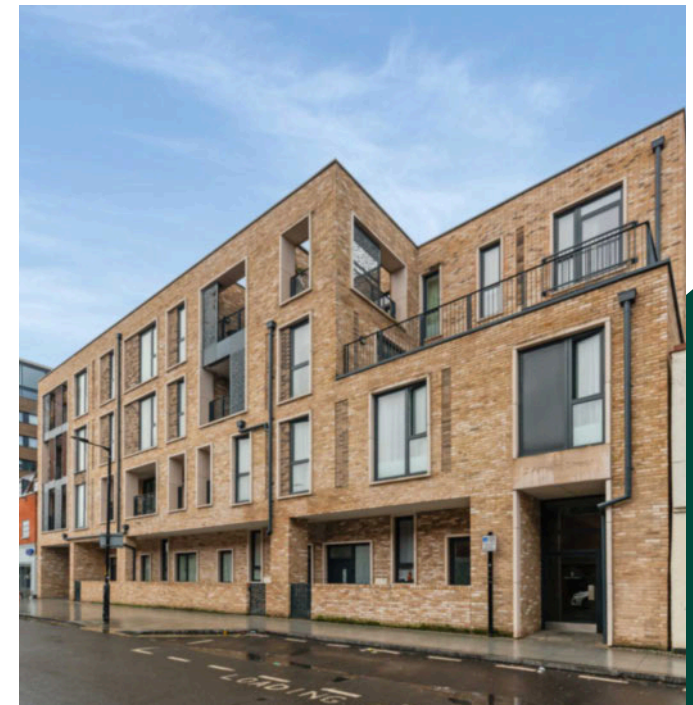
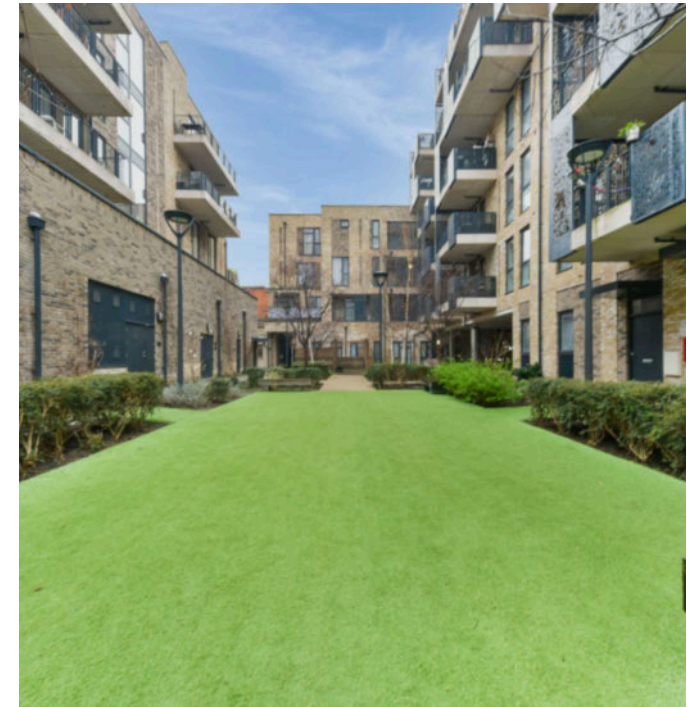
Local Authority: Southwark Council

Ground Rent: £250 p.a.

Council Tax Band: D

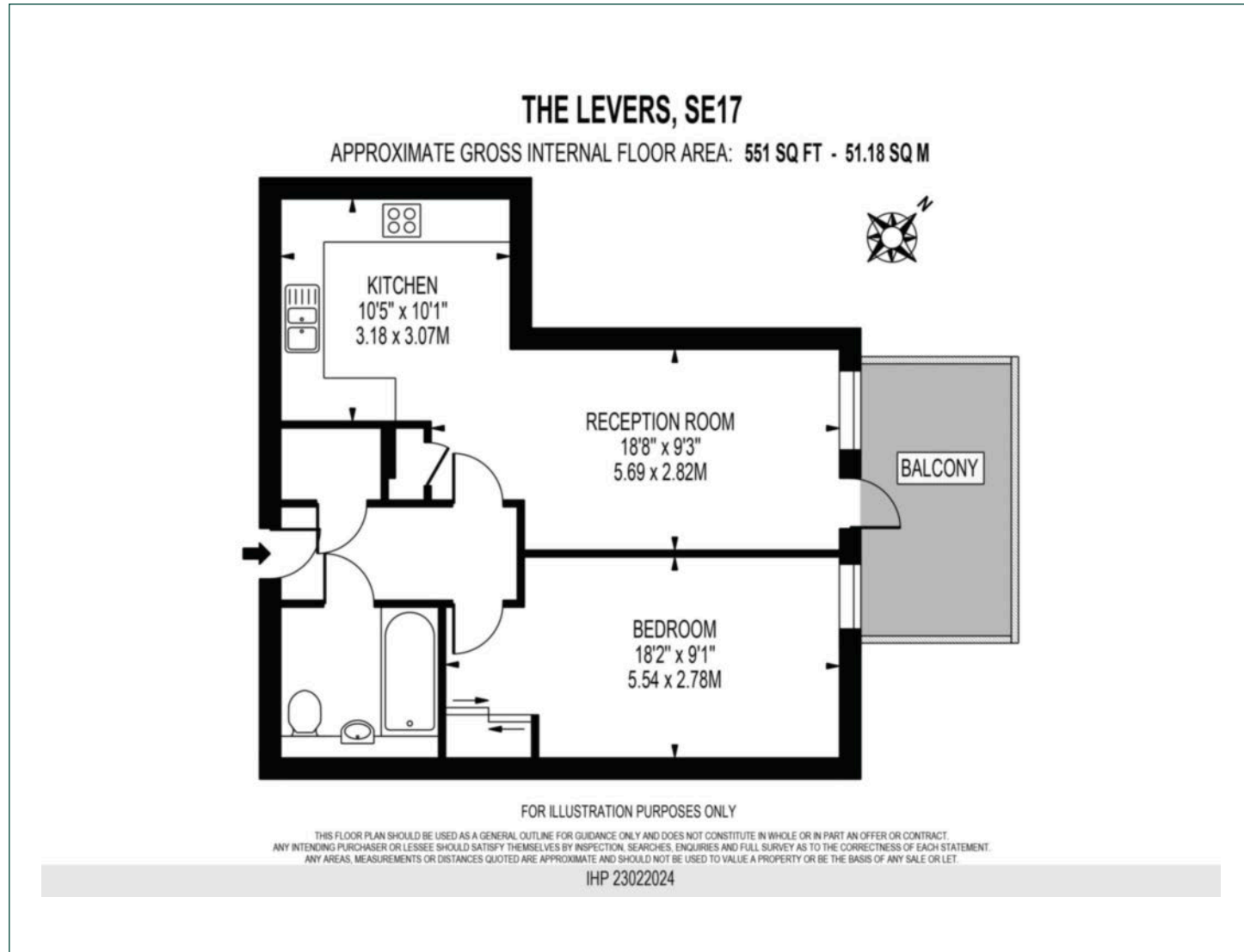
Service Charge: £2,242.80 p.a.

EPC: B



Floorplan

551 sq ft | 51.18 sq m



Elephant & Castle

One The Elephant, 5 St Gabriel Walk, London, SE1 6FG

Sales

020 3869 2898 | eandc.sales@chaseevans.com

We're here to help.

IMPORTANT NOTICE - These particulars have been prepared in good faith and they are not intended to constitute part of an offer or contract. We have not performed a structural survey on this property and the services, appliances and specific fittings have not been tested. All photographs, measurements, floor plans and distances referred to are given as a guide and should not be relied upon.

chaseevans.com

 Chase Evans