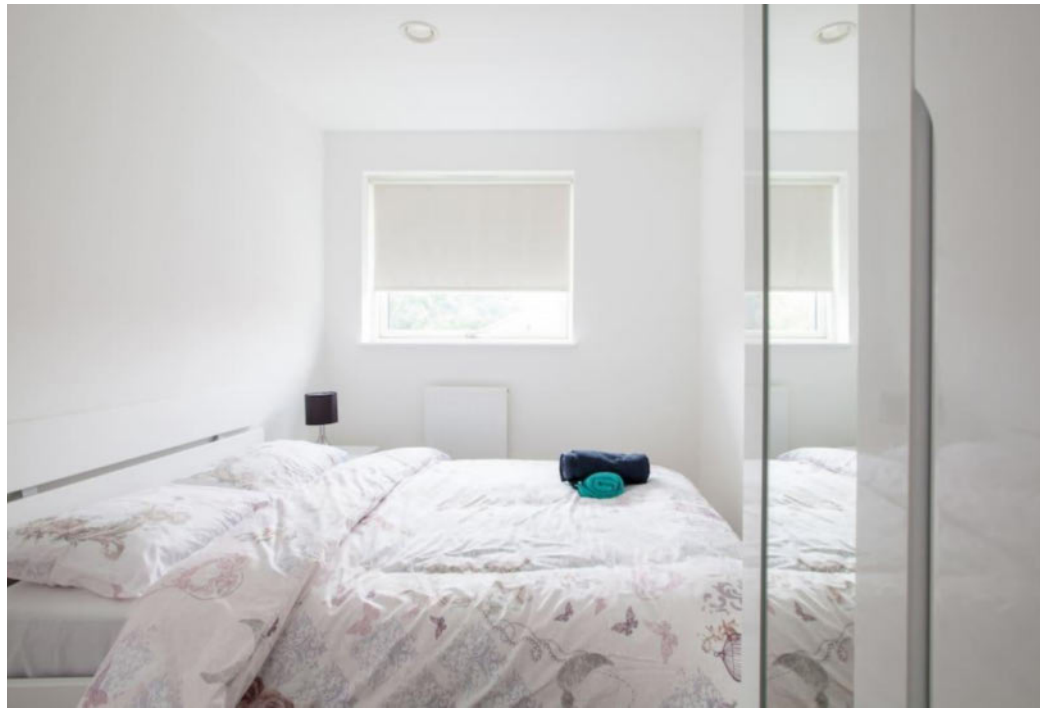




## **Pullman Building, Bermondsey Spa, Spa Road, Bermondsey, SE16**

Asking price **£620,000** | Leasehold



# Pullman Building, Bermondsey Spa, Spa Road, Bermondsey, SE16



2 Bedrooms



1 Bathroom



1 Reception



Balcony



Nearby Parks



Local Amenities



0.4 MI Bermdonsey

This modern two double bedroom double aspect apartment is set in building forming Bermondsey Spa, the sought-after development in the recently regenerated neighbourhood a 10-minute walk away from Bermondsey station. The property comprises open-plan living area, modern integrated kitchen, spacious south-facing private balcony, two sizable bedrooms with fitted storage and a pristine bathroom suite.

The apartment is a stone's throw from Bermondsey Spa Gardens, a charming local park with toddlers' play area, games area and a play centre. A short

walk away is the award winning Southwark Park, a large open green space with a bowling green, tennis courts and football pitches, plus a sports centre and more.

The Pullman Building is well located for Maltby Street and its array of shops, bars and restaurants including the popular street market. Located in travel zone 2, the apartment has access to Bermondsey Street station (Jubilee line), while a short walk away is London Bridge station with Rail and underground services convenient for City or Canary Wharf commuters.

**Tenure:** Leasehold (116 years remaining)

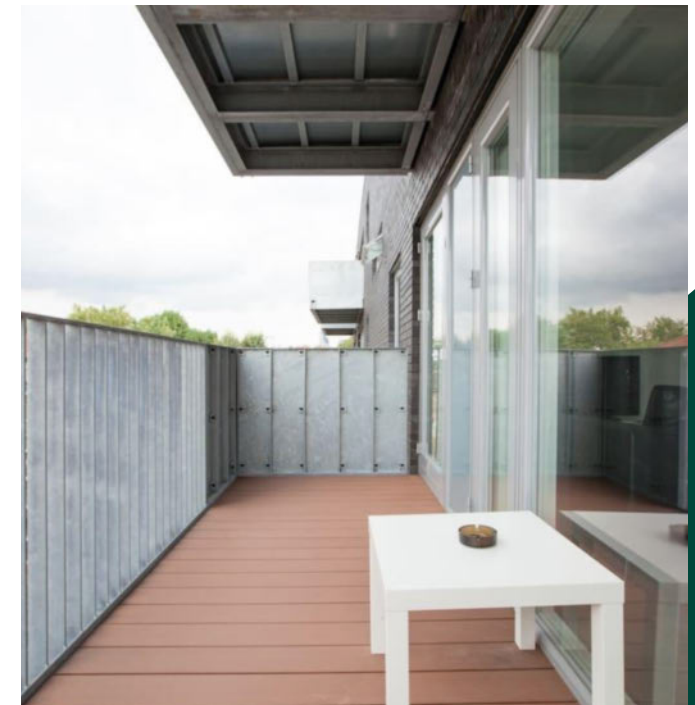
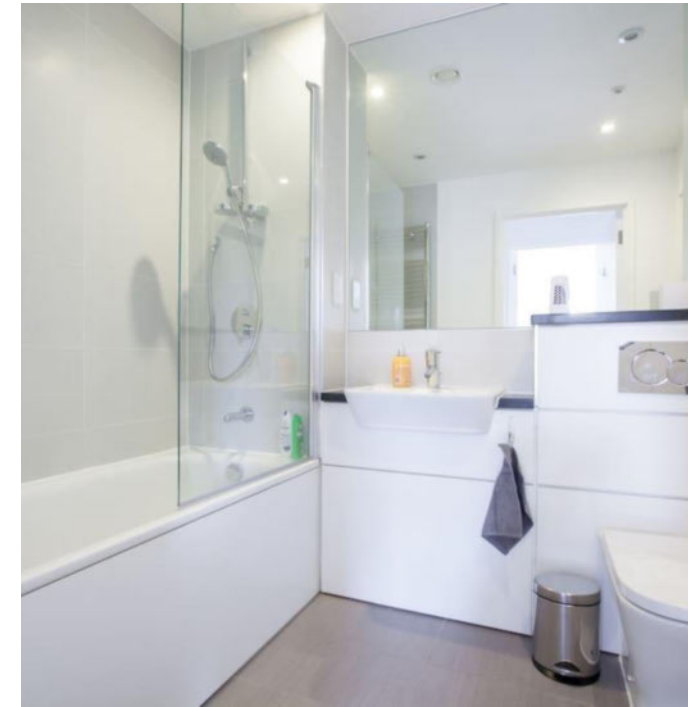
**Local Authority:** Southwark Council

**Ground Rent:** £250 p.a.

**Council Tax Band:** E

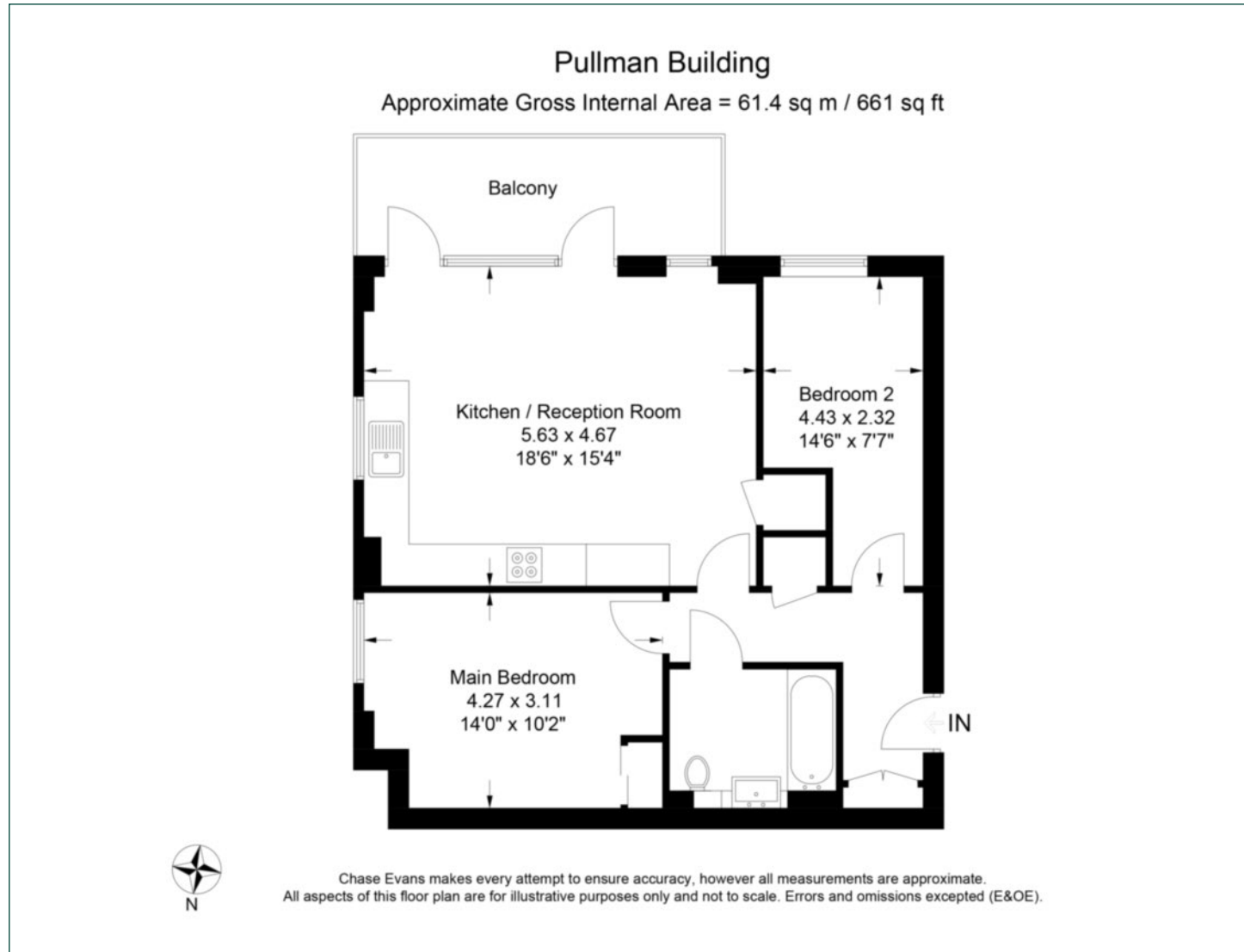
**Service Charge:** £2,021 p.a.

**EPC:** B



# Floorplan

665 sq ft | 61 sq m



## Elephant & Castle

One The Elephant, 5 St Gabriel Walk, London, SE1 6FA

## Sales

020 3869 2898 | [eandc.sales@chaseevans.co.uk](mailto:eandc.sales@chaseevans.co.uk)

## We're here to help.

IMPORTANT NOTICE - These particulars have been prepared in good faith and they are not intended to constitute part of an offer or contract. We have not performed a structural survey on this property and the services, appliances and specific fittings have not been tested. All photographs, measurements, floor plans and distances referred to are given as a guide and should not be relied upon.

[chaseevans.com](http://chaseevans.com)

 Chase Evans