

- ONE BEDROOM
- NINTH FLOOR
- BALCONY
- 24HR CONCIERGE
- RESIDENTS' TERRACE

A contemporary 9th floor one bedroom apartment in this iconic tower in Elephant & Castle, a stroll from the Tube and National Rail station. The property benefits from a spacious open plan living room, fully integrated kitchen, private balcony, ample bedroom with fitted wardrobes and a modern bathroom. 24 hr concierge. With access to a green roof for growing produce, and a communal reading garden.

£525,000 (Leasehold)



THE TOWER, ONE THE ELEPHANT, ELEPHANT & CASTLE SE1

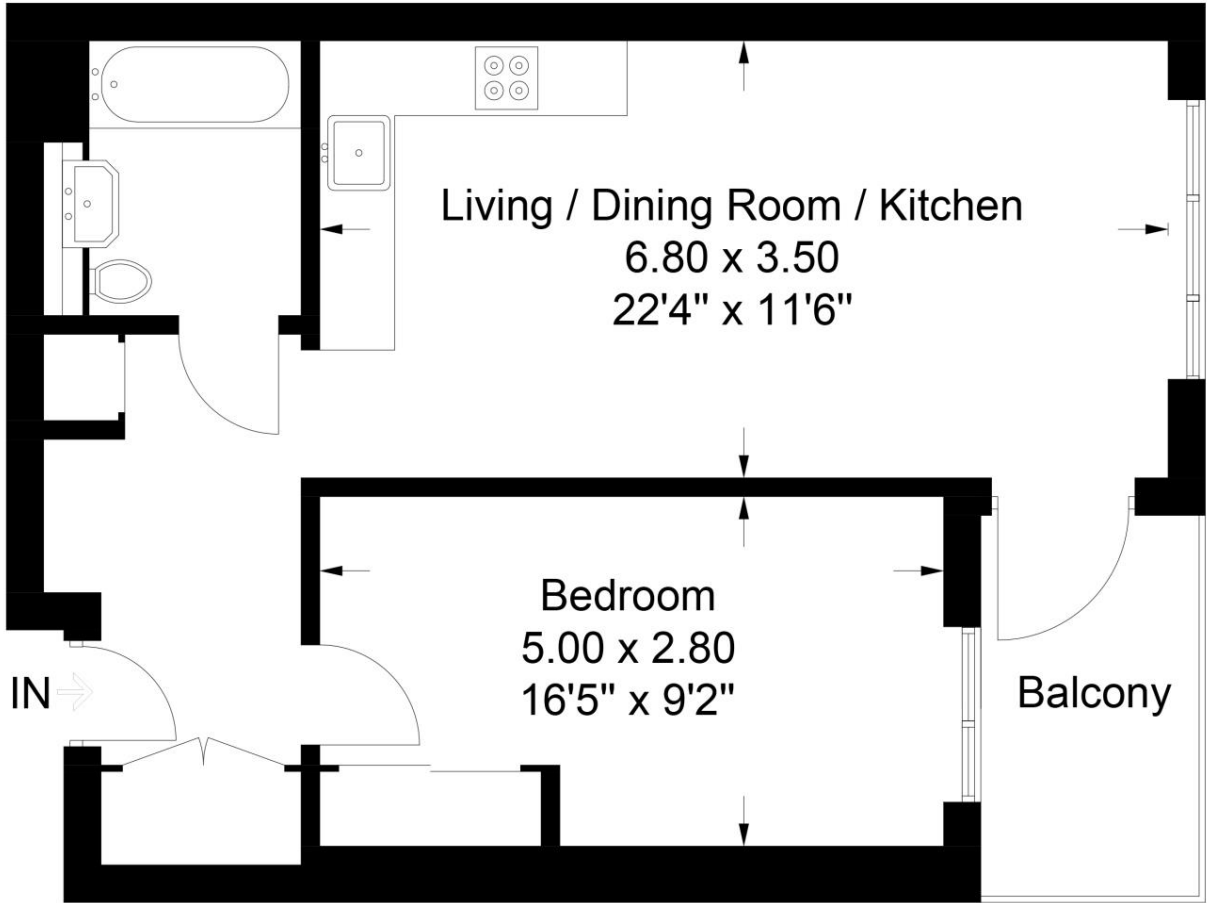
£525,000 (Leasehold)



THE TOWER, ONE THE ELEPHANT, ELEPHANT & CASTLE SE1

£525,000 (Leasehold)

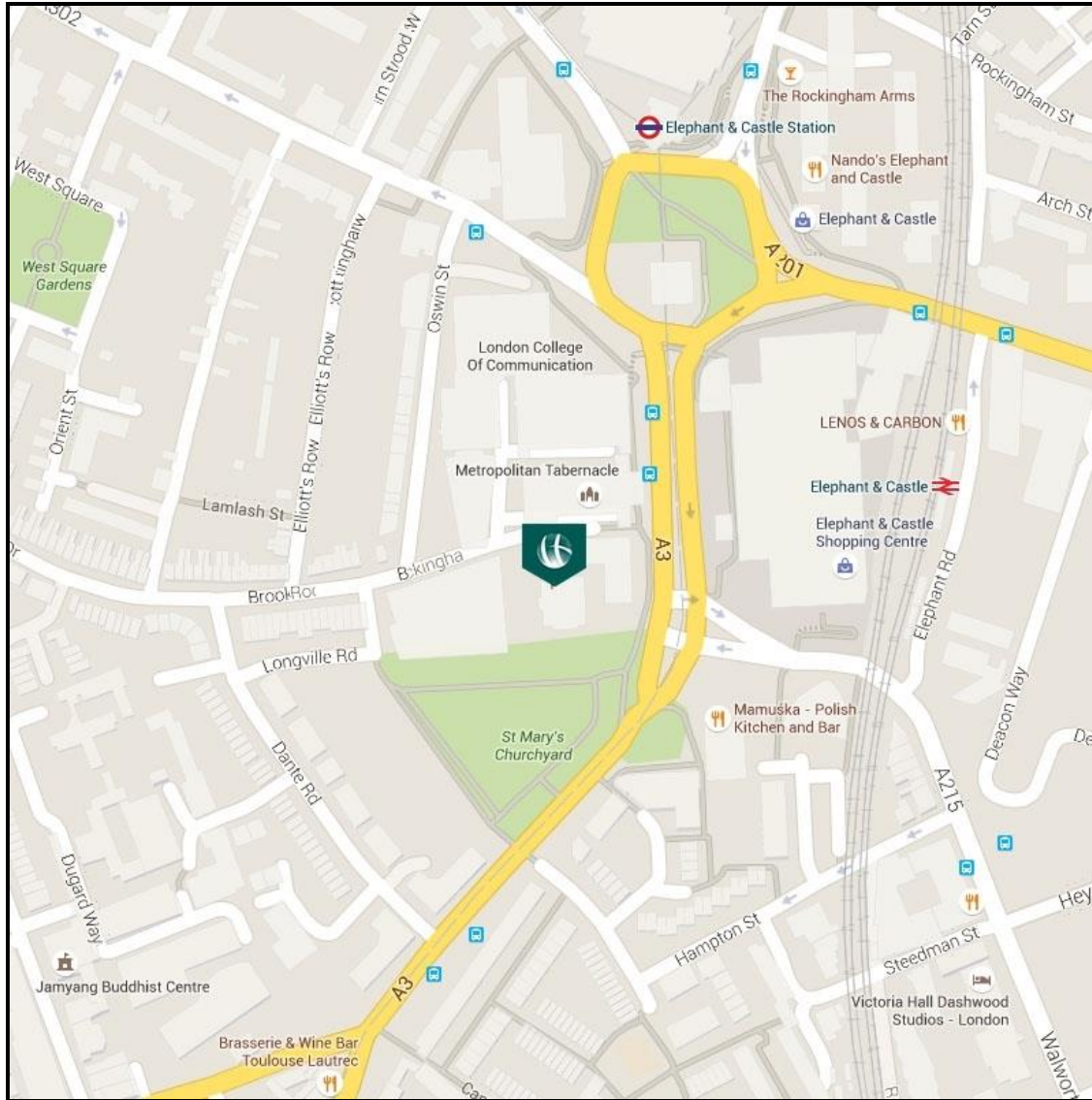
The Tower, One The Elephant, 1 St. Gabriels Walk
Approximate Gross Internal Area = 51.9 sq m / 559 sq ft



Chase Evans makes every attempt to ensure accuracy, however all measurements are approximate.
All aspects of this floor plan are for illustrative purposes only and not to scale. Errors and omissions excepted (E&OE).

THE TOWER, ONE THE ELEPHANT, ELEPHANT & CASTLE SE1

£525,000 (Leasehold)



Energy Efficiency Rating		Environmental Impact Rating	
	Current	Potential	
Very energy efficient - lower running costs			EPC Pending
A (92-100)			
B (81-91)	84	84	
C (69-80)			
D (55-68)			
E (39-54)			
F (21-38)			
G (1-20)			
Not energy efficient - higher running costs			
England & Wales		EU Directive 2002/91/EC	
<p>The energy efficiency rating is a measure of the overall efficiency of a home. The higher the rating the more energy efficient the home is and the lower the fuel bills will be.</p> <p>The environmental impact rating is a measure of a home's impact on the environment in terms of carbon dioxide (CO2) emissions. The higher the rating the less impact it has on the environment.</p>			

[View Property](#)

Contact Information:

Elephant and Castle Office

5 St Gabriel Walk, London, SE1 6FS

Tel: 020 3869 2888

Email: onetheelephant@chaseevans.co.uk