

HUNTERS[®]

HERE TO GET *you* THERE



Sharrow Vale Road

S11 8ZB

£277 Per Calendar Month

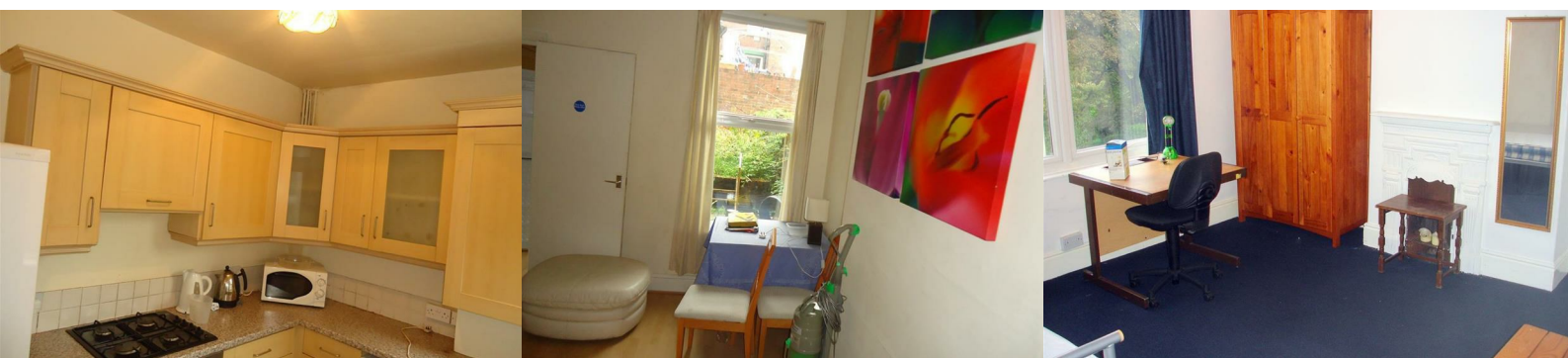


***AVAILABLE NOW!* 1 DOUBLE BEDROOM IN TERRACE HOUSE, SHARROW VALE**

**** £200 DEPOSIT EACH TENANT ****

Located in the heart of Sharrow Vale, it is just round the corner from the bustle of Ecclesall Road with shops, bars and restaurants on your doorstep, excellent transport links to the City Centre, within easy walking distance to Sheffield Hallam's Collegiate Campus and Endcliffe Park, this is a hugely sought after area.

Suitable for students, this house is currently being let on a room-by-room basis and briefly comprises; a communal reception room with leather sofas, kitchen equipped with gas hob, electric oven, two double fridge-freezers, washing machine and ample cupboard space together with a garden to the rear, two WC's and a shower. One double bedroom available at £62.00 pppw. Internet included in rent.



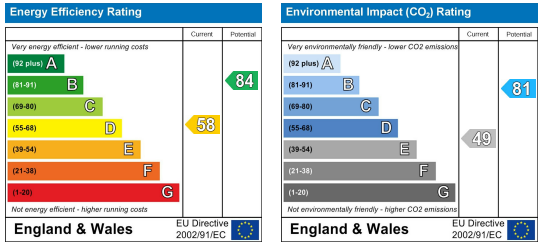
Area Map



Floor Plans



Energy Efficiency Graph



These particulars are intended to give a fair and reliable description of the property but no responsibility for any inaccuracy or error can be accepted and do not constitute an offer or contract. We have not tested any services or appliances (including central heating if fitted) referred to in these particulars and the purchasers are advised to satisfy themselves as to the working order and condition. If a property is unoccupied at any time there may be reconnection charges for any switched off/disconnected or drained services or appliances - All measurements are approximate. **THINKING OF SELLING?** If you are thinking of selling your home or just curious to discover the value of your property, Hunters would be pleased to provide free, no obligation sales and marketing advice. Even if your home is outside the area covered by our local offices we can arrange a Market Appraisal through our national network of Hunters estate agents.

Tel: Email: