



>> Your home,
away from home

Vale da Lapa
Village Resort

VALE DA LAPA

Vale da Lapa

Village Resort



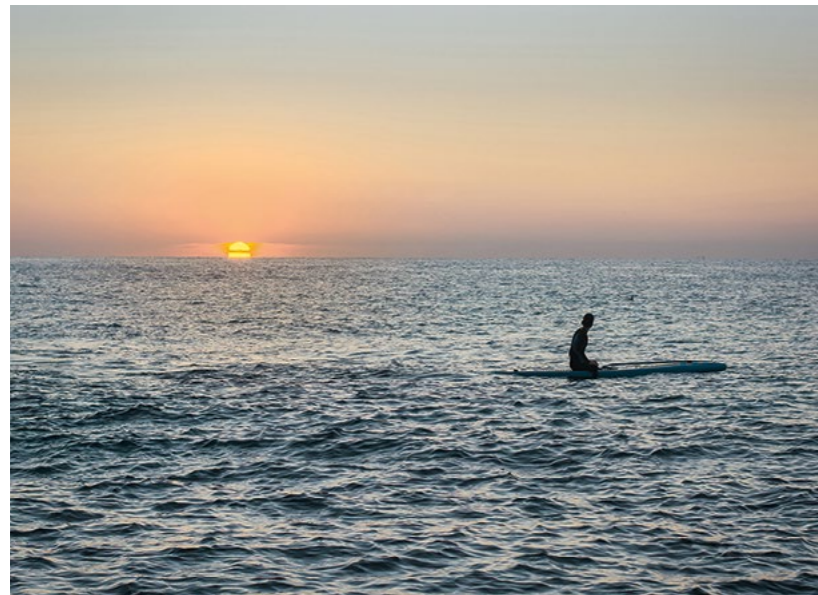
Vale da Lapa is a stunning 5-star touristic resort located in Carvoeiro, one of the key holiday destinations in the Algarve. The resort is fully operational, and is made up of 85 properties, comprising of 2-bedroom townhouses (V2) and 3-bedroom free-standing villas (V3).

Aptly named as a Village Resort, Vale da Lapa very much has that peaceful village feel, perfectly suited for anyone looking for tranquillity. Flowing through the centre of the resort, visitors will find a series of inter-connected man-made ponds, which paired with the unique Algarve climate results in immediate peace of mind.



>> Welcome to Carvoeiro your local ocean front village

Since the dawn of tourism in the Algarve, the quaint fishing village of Praia do Carvoeiro has charmed visitors with its magnificent coastline, beaches and relaxed way of life.

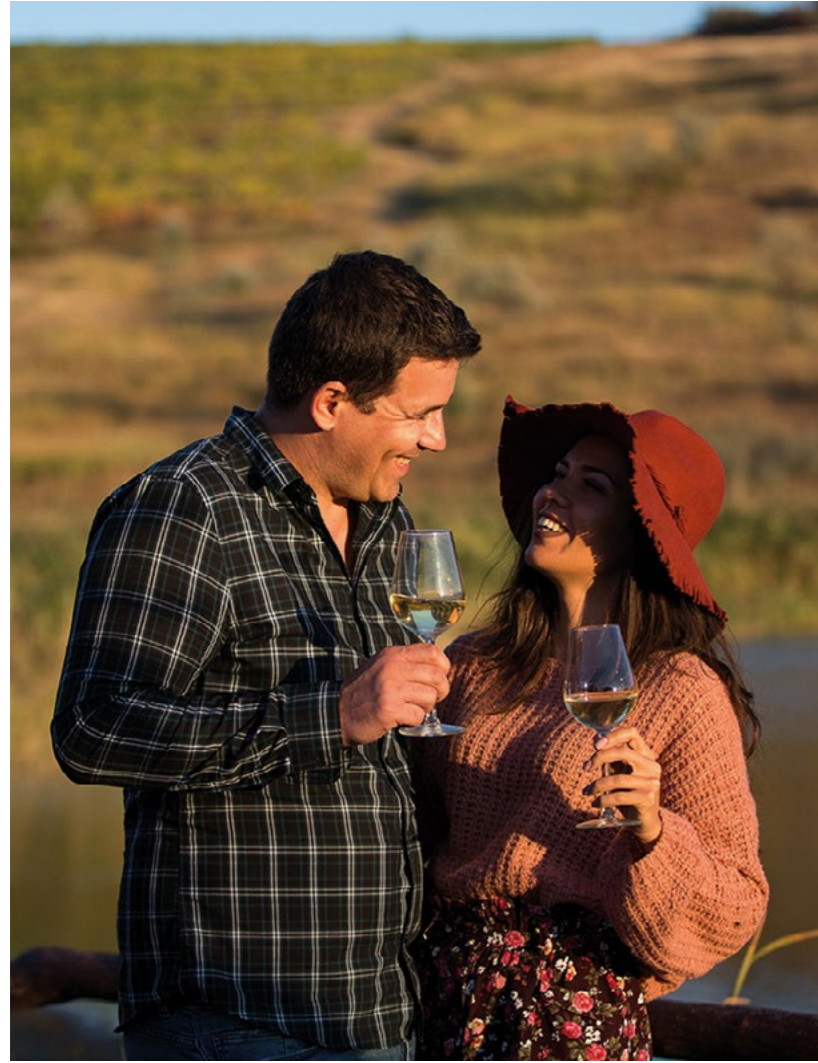


» Get to know the authentic Algarve

The beauty of the region lies in its authenticity and diversity. The Algarve takes lifetimes to explore, so get started today.

Each day is a new adventure; choose which aspect of the Algarve you want to explore. Whether you are looking for sports, gastronomy, nature or culture, the offering is endless.

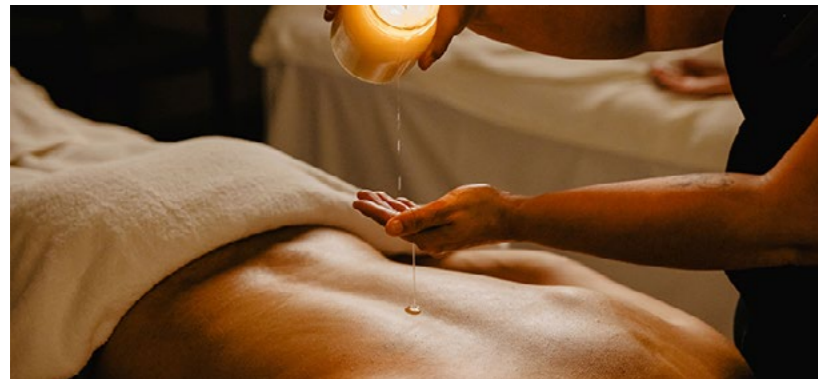
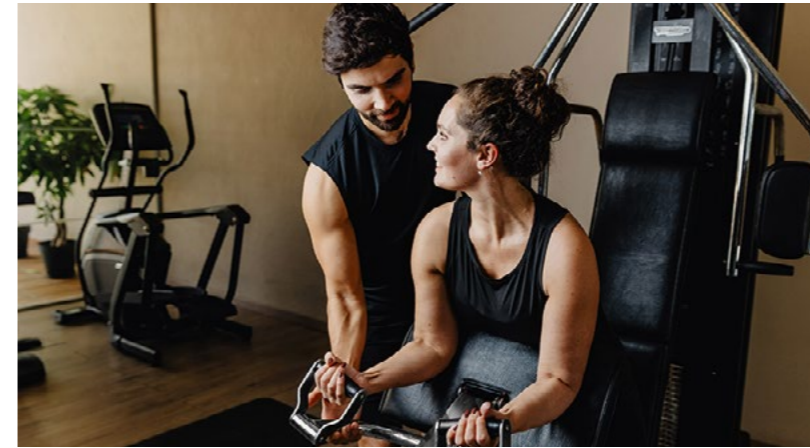




» Amenities at Vale da Lapa

At Vale de Lapa visitors will find all the essentials that are needed for a relaxing holiday and then some! In the central location there is an expansive restaurant, an all-day bar as well as a small shop. Right next to the 3 swimming pools (1 kids' pool, 1 outdoor pool & 1 indoor-outdoor pool), guests can choose to either relax in the spa (including a sauna, steam-room and treatment rooms), or decide to get active in the gym, on the paddle-courts or on the multi-purpose sports-field.

These options are ideal for families, with activities and attractions for all preferences and ages. For the youngest visitors the resort also boasts a playground and even a kids club.



Site map



Guest information

- A Reception
- B Garage
- C Pergola
- D Gate-house
- E Car Parking

Amenities

- F Kids Playground
- G Padel Courts
- H Multisports Court
- I Spa
- J Kids Club
- K Restaurant & Bar
- L Indoor-Outdoor pool
- M Outdoor pool
- N Carvoeiro Club - Tennis & Padel

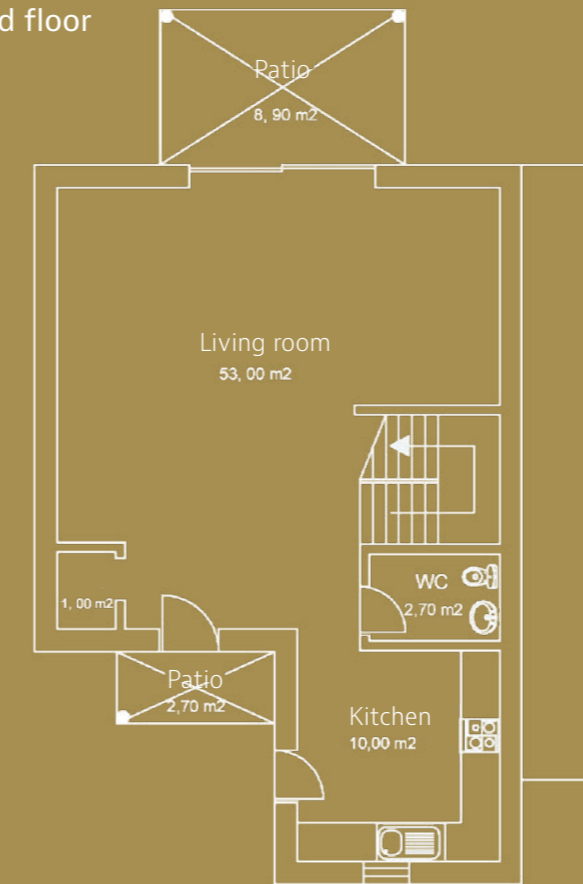
>> 2-bedroom duplex townhouses

Located in the centre of the resort, these impressively spacious townhouses are harmoniously positioned around the 3 inter-connected ponds which run through Vale da Lapa.

- Fully furnished and equipped
- 2 en suite bedrooms
- Vanity & closet area with skylight
- Open-plan living and dining room
- Balcony & terrace
- Modern furniture
- Underfloor heating
- Daikin Air conditioning
- Fibre-optic internet
- High-end kitchen appliances
- Electric window-shutters
- Private parking



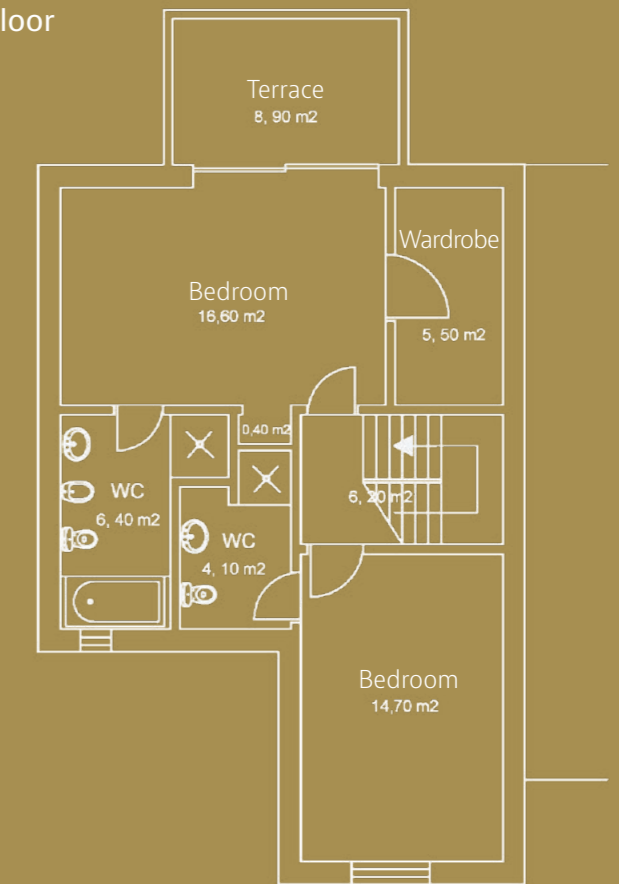
Ground floor



Ground floor

Gross area = 74,8m²
 Net area = 66,7m²
 Patio = 11,60m²

First floor



First floor

Gross area = 55,8m²
 Net area = 49,8m²
 Terrace = 8,90m²

Total areas

Gross area = 130,6m² Terrace = 8,90m²
 Net area = 116,5m²
 Patio = 11,60m²

* example floor-plan of a 2-bedroom town-house, in this case property 247

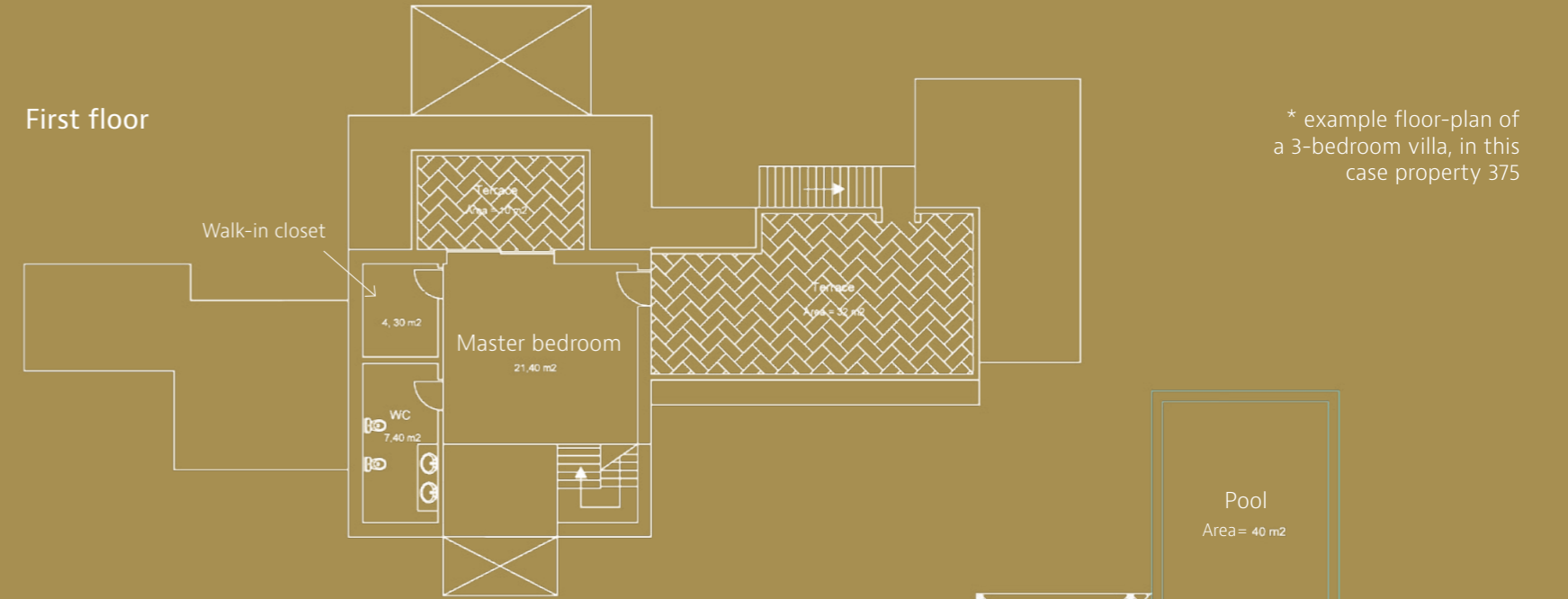
3-bedroom villas with private gardens and pools

Located along the southern border of the resort, these properties combine the privacy of an independent villa with the security and turnkey benefits of a resort.

- Fully furnished and equipped
- 3 en suite bedrooms
- Expansive walk-in closet
- Open-plan living and dining room
- Balcony & terrace
- Modern furniture
- Underfloor heating
- Daikin Air conditioning
- Fibre-optic internet
- High-end kitchen appliances
- Electric window-shutters
- Private parking & private pool



First floor



First floor

Gross area = 40,8m²
 Net area = 33,1m²
 Terrace = 42m²

Ground floor

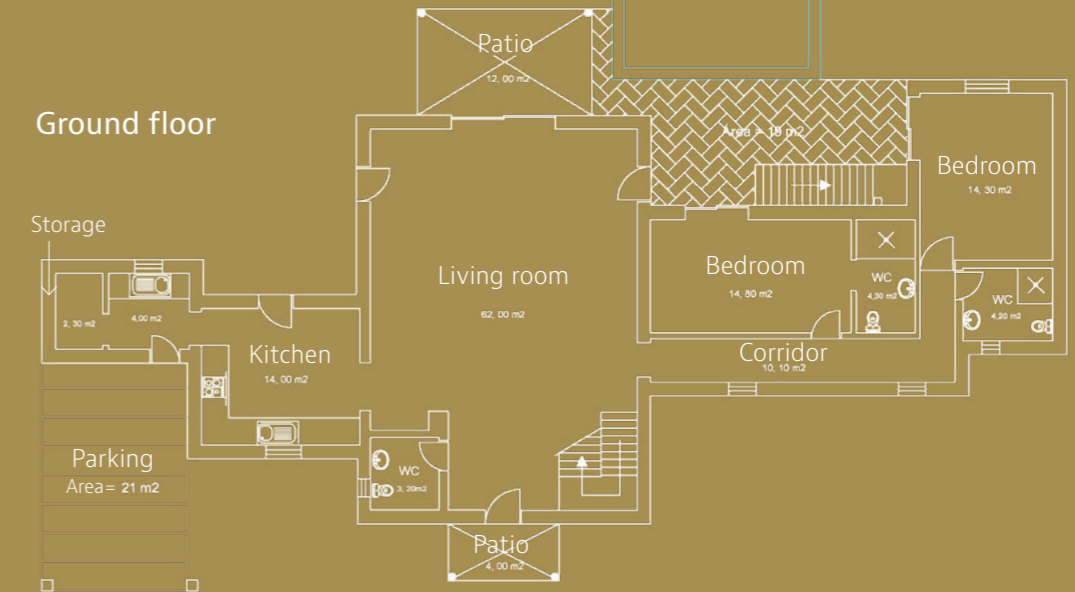
Gross area = 164,2m²
 Net area = 133,2m²

Paving = 19m²
 Pool = 40m²
 Parking = 21m²
 Patio = 16m²

Total areas

Gross area = 205m²
 Net area = 166,3m²

Ground floor



» Hassle-free ownership

Whether you are looking for a holiday-home or even to relocate to paradise, Vale da Lapa is there for you.

Owners of these stunning properties have flexibility as to how and when to use them, with the idea that your property should match your needs, not the other way around.

Most importantly, Vale da Lapa is an established and operating resort with an experienced management team, allowing hassle-free ownership.



FINE & COUNTRY
ALGARVE

Vale da Lapa
Village Resort

Award winning international estate agents in over 300 locations worldwide

algarve.fineandcountry.com | Central & West Algarve (Praia do Carvoeiro) +351 282 354 140 | AMI 9767 (Chamadas para rede fixa nacional)
International head office Park Lane London | UK telephone 0207 3180631 | 121 Park Lane, Mayfair, London W1K 7AG, United Kingdom