



HEMMINGS HOMES

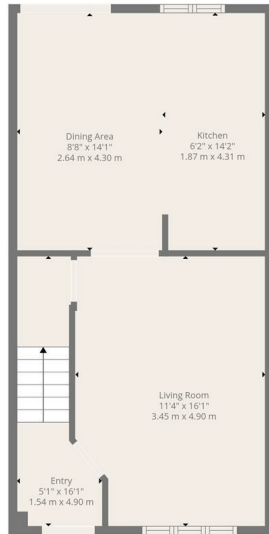
OFFERS OVER

**£180,000**

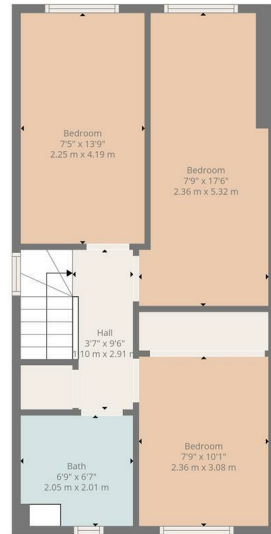
**Elm Drive**

Airdrie, ML6 8GA





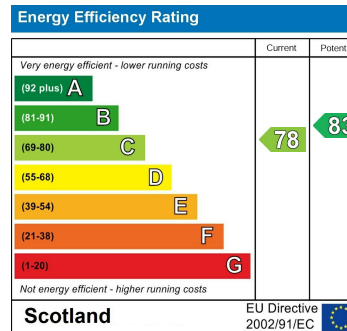
Ground Floor



1st Floor



**TOTAL: 840 sq. ft, 79 m2**  
 Ground floor: 393 sq. ft, 37 m2, 1st floor: 447 sq. ft, 42 m2  
 EXCLUDED AREAS: LOW CEILING: 59 sq. ft, 5 m2, WALLS: 98 sq. ft, 8 m2  
Floor Plan Created By Cubicasa App. Measurements Deemed Highly Reliable But Not Guaranteed.



Agents Note: Whilst every care has been taken to prepare these particulars, they are for guidance purposes only. All measurements are approximate and are for general guidance purposes only and whilst every care has been taken to ensure their accuracy, they should not be relied upon and potential buyers/tenants are advised to recheck the measurements



**OFFICE ADDRESS**  
 376 Brandon Street  
 Motherwell  
 North Lanarkshire  
 ML1 1XA

**OFFICE DETAILS**  
 01698 263413  
[enquiries@hemmingshomes.co.uk](mailto:enquiries@hemmingshomes.co.uk)  
[hemmingshomes.co.uk](http://hemmingshomes.co.uk)