



HEMMINGS HOMES

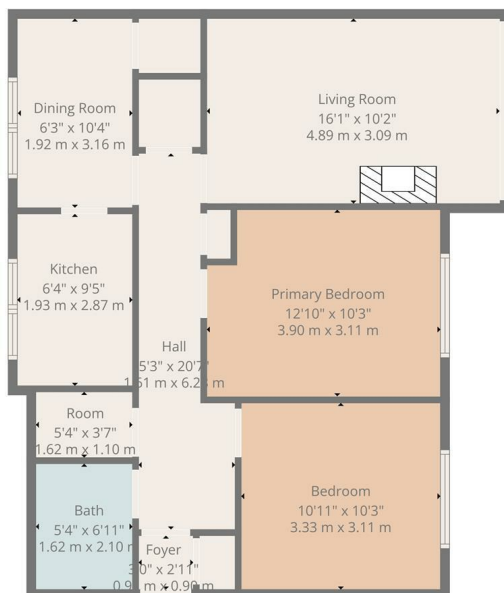


OFFERS OVER

£165,000

Napiershall Street

Glasgow, G20 6EX



TOTAL: 728 sq. ft, 68 m²
FLOOR 1: 728 sq. ft, 68 m²
EXCLUDED AREAS: ROOM: 19 sq. ft, 2 m², WALLS: 59 sq. ft, 5 m²
Floor Plan Created By CalcuApp. Measurements Deemed Highly Reliable But Not Guaranteed.

2



1



1



Energy Efficiency Rating

	Current	Potential
Very energy efficient - lower running costs		
(92 plus) A		
(81-91) B		
(69-80) C		
(55-68) D		
(39-54) E		
(21-38) F		
(1-20) G		
Not energy efficient - higher running costs		
Scotland	71	77
EU Directive 2002/91/EC		



Agents Note: Whilst every care has been taken to prepare these particulars, they are for guidance purposes only. All measurements are approximate and are for general guidance purposes only and whilst every care has been taken to ensure their accuracy, they should not be relied upon and potential buyers/tenants are advised to recheck the measurements



HEMMINGS HOMES

OFFICE ADDRESS

376 Brandon Street
 Motherwell
 North Lanarkshire
 ML1 1XA

OFFICE DETAILS

01698 263413
enquiries@hemmingshomes.co.uk
hemmingshomes.co.uk