



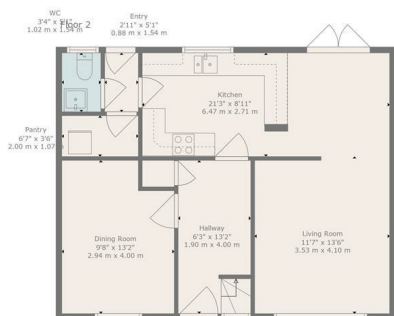
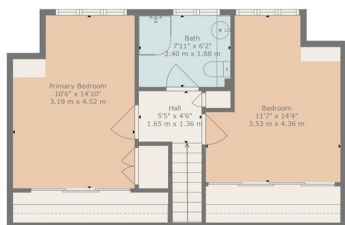
HEMMINGS HOMES

OFFERS OVER

£165,000

Branchalfield Drive

Wishaw, ML2 8QB



Floor 1

TOTAL: 1099 sq. ft, 102 m²
FLOOR 1: 628 sq. ft, 58 m², FLOOR 2: 471 sq. ft, 44 m²
EXCLUDED AREAS: LOW CEILING: 8 sq. ft, 0 m²
WALLS: 100 sq. ft, 11 m²

Floor Plan Created By Cubicase App. Measurements Deemed Highly Reliable But Not Guaranteed.

3



2



1



Agents Note: Whilst every care has been taken to prepare these particulars, they are for guidance purposes only. All measurements are approximate and are for general guidance purposes only and whilst every care has been taken to ensure their accuracy, they should not be relied upon and potential buyers/tenants are advised to recheck the measurements

Energy Efficiency Rating

| | Current | Potential |
|---|-------------------------|-----------|
| Very energy efficient - lower running costs | | |
| (92 plus) A | | |
| (81-91) B | | 87 |
| (69-80) C | | |
| (55-68) D | 62 | |
| (39-54) E | | |
| (21-38) F | | |
| (1-20) G | | |
| Not energy efficient - higher running costs | | |
| Scotland | EU Directive 2002/91/EC | |



HEMMINGS HOMES

OFFICE ADDRESS

376 Brandon Street
 Motherwell
 North Lanarkshire
 ML1 1XA

OFFICE DETAILS

01698 263413
enquiries@hemmingshomes.co.uk
hemmingshomes.co.uk