



HEMMINGS HOMES

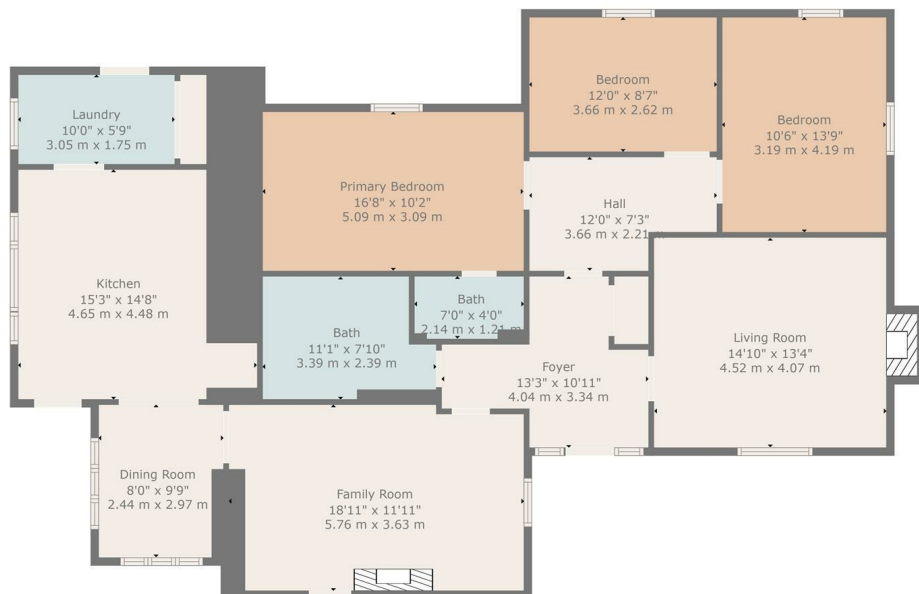
OFFERS OVER

**£325,000**

**Morningside Road**

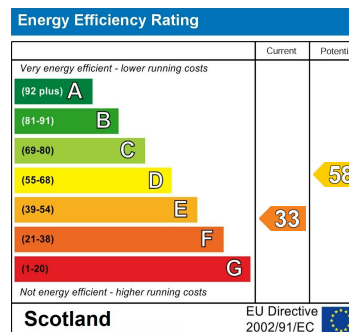
Newmains, ML2 9QS





**TOTAL: 1584 sq. ft, 147 m<sup>2</sup>**  
**FLOOR 1: 1584 sq. ft, 147 m<sup>2</sup>**  
**EXCLUDED AREAS: FIREPLACE: 10 sq. ft, 1 m<sup>2</sup>**  
**WALLS: 93 sq. ft, 9 m<sup>2</sup>**

Floor Plan Created By Cubicase App. Measurements Deemed Highly Reliable But Not Guaranteed.



Agents Note: Whilst every care has been taken to prepare these particulars, they are for guidance purposes only. All measurements are approximate and are for general guidance purposes only and whilst every care has been taken to ensure their accuracy, they should not be relied upon and potential buyers/tenants are advised to recheck the measurements



### OFFICE ADDRESS

376 Brandon Street  
 Motherwell  
 North Lanarkshire  
 ML1 1XA

### OFFICE DETAILS

01698 263413  
[enquiries@hemmingshomes.co.uk](mailto:enquiries@hemmingshomes.co.uk)  
[hemmingshomes.co.uk](http://hemmingshomes.co.uk)