



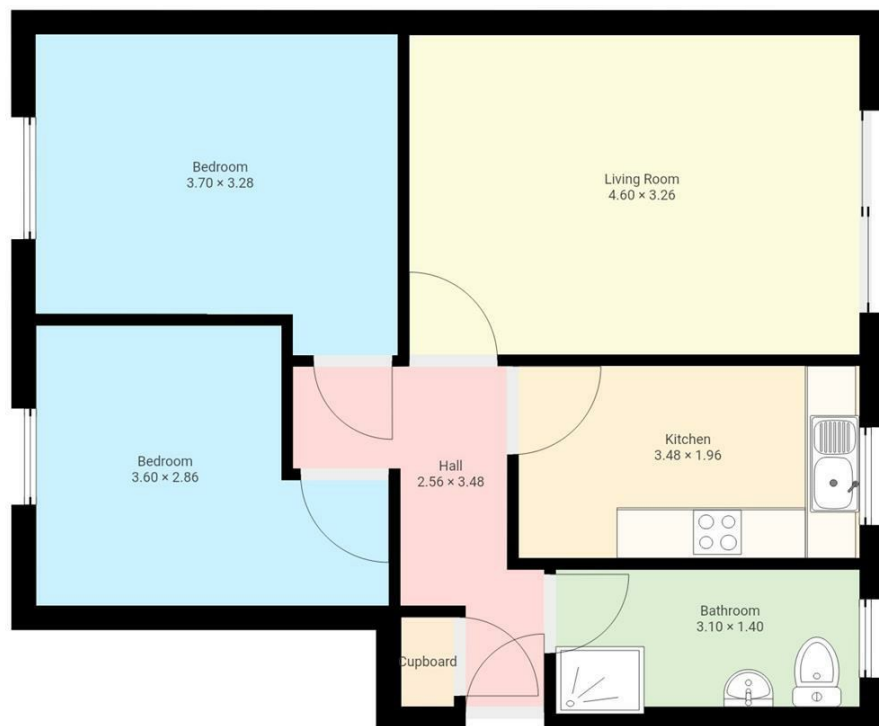
HEMMINGS HOMES

OFFERS OVER

£82,000

Milton Street

Motherwell, ML1 1DQ



Whilst every attempt has been made to ensure the accuracy of the floor plan contained here, measurements of doors, windows, rooms and any other items are approximate and no responsibility is taken for any error omission or mis-statement. This plan is for illustrative purposes only and should be used as such by any prospective purchaser.



Energy Efficiency Rating		
	Current	Potential
Very energy efficient - lower running costs		
(92 plus) A		
(81-91) B		
(69-80) C		
(55-68) D		
(39-54) E		
(21-38) F		
(1-20) G		
Not energy efficient - higher running costs		
Scotland	70	76
	EU Directive 2002/91/EC	



Agents Note: Whilst every care has been taken to prepare these particulars, they are for guidance purposes only. All measurements are approximate and are for general guidance purposes only and whilst every care has been taken to ensure their accuracy, they should not be relied upon and potential buyers/tenants are advised to recheck the measurements



OFFICE ADDRESS

376 Brandon Street
Motherwell
North Lanarkshire
ML1 1XA

OFFICE DETAILS

01698 263413
enquiries@hemmingshomes.co.uk
hemmingshomes.co.uk