



**HEMMINGS HOMES**

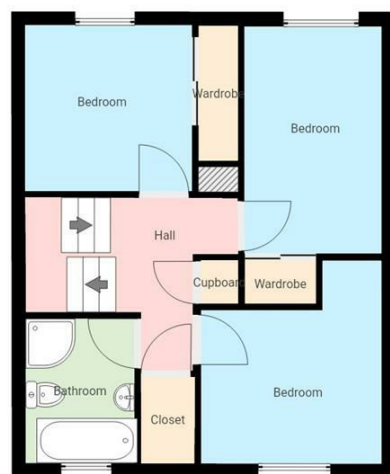
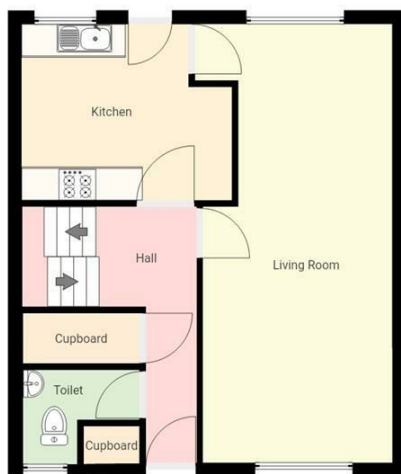
FIXED ASKING PRICE

**£159,000**

**Sutherland Way**

Livingston, EH54 8HR





3



1



1



Whilst every attempt has been made to ensure the accuracy of the floor plan contained here, measurements of doors, windows, rooms and any other items are approximate and no responsibility is taken for any error omission or mis-statement. This plan is for illustrative purposes only and should be used as such by any prospective purchaser.

Energy Efficiency Rating		
	Current	Potential
Very energy efficient - lower running costs		
(92 plus) <b>A</b>		
(81-91) <b>B</b>		
(69-80) <b>C</b>		
(55-68) <b>D</b>		
(39-54) <b>E</b>		
(21-38) <b>F</b>		
(1-20) <b>G</b>		
Not energy efficient - higher running costs		
<b>Scotland</b>		
	66	79
	EU Directive 2002/91/EC	

Agents Note: Whilst every care has been taken to prepare these particulars, they are for guidance purposes only. All measurements are approximate and are for general guidance purposes only and whilst every care has been taken to ensure their accuracy, they should not be relied upon and potential buyers/tenants are advised to recheck the measurements



HEMMINGS HOMES

#### OFFICE ADDRESS

376 Brandon Street  
Motherwell  
North Lanarkshire  
ML1 1XA

#### OFFICE DETAILS

01698 263413  
enquiries@hemmingshomes.co.uk  
hemmingshomes.co.uk