



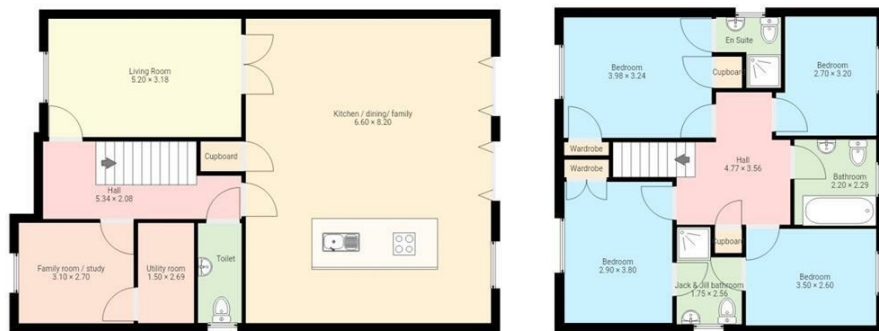
HEMMINGS HOMES

OFFERS OVER

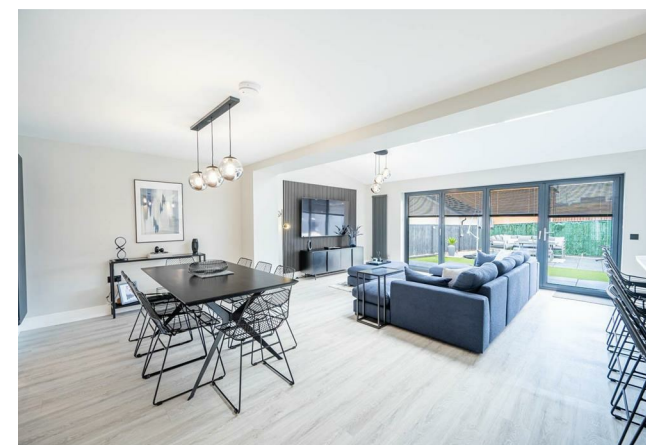
£355,000

Harburn Place


Motherwell, ML1 5UG



4 
 4 
 3 



Whilst every attempt has been made to ensure the accuracy of the floor plan contained here, measurements of doors, windows, rooms and any other items are approximate and no responsibility is taken for any error omission or mis-statement. This plan is for illustrative purposes only and should be used as such by any prospective purchaser.

Energy Efficiency Rating		
	Current	Potential
Very energy efficient - lower running costs		
(92 plus) A		
(81-91) B		
(69-80) C		
(55-68) D		
(39-54) E		
(21-38) F		
(1-20) G		
Not energy efficient - higher running costs		
Scotland	EU Directive 2002/91/EC	

Agents Note: Whilst every care has been taken to prepare these particulars, they are for guidance purposes only. All measurements are approximate and are for general guidance purposes only and whilst every care has been taken to ensure their accuracy, they should not be relied upon and potential buyers/tenants are advised to recheck the measurements



OFFICE ADDRESS
 376 Brandon Street
 Motherwell
 North Lanarkshire
 ML1 1XA

OFFICE DETAILS
 01698 263413
enquiries@hemmingshomes.co.uk
hemmingshomes.co.uk