



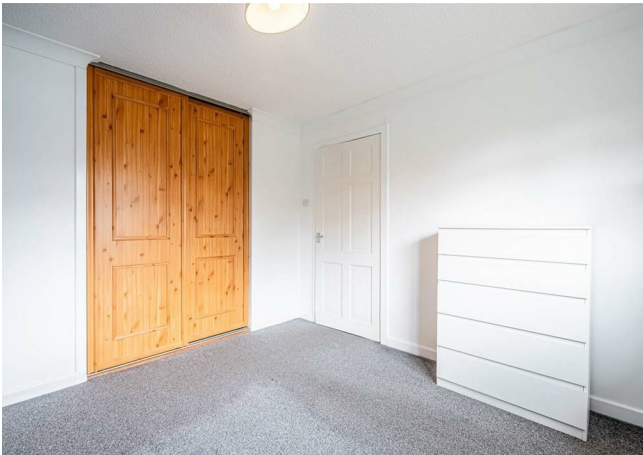
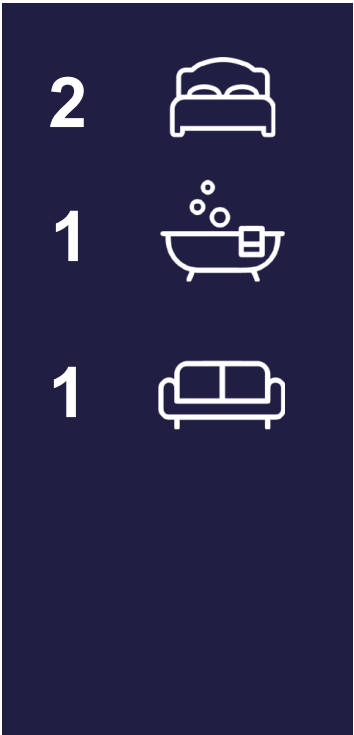
HEMMINGS HOMES


PCM

£850 PCM


Dorain Road

Motherwell, ML1 5DF



Energy Efficiency Rating		Current	Potential
<i>Very energy efficient - lower running costs</i>			
(92 plus) A			
(81-91) B			
(69-80) C			
(55-68) D			
(39-54) E			
(21-38) F			
(1-20) G			
<i>Not energy efficient - higher running costs</i>			
Scotland		EU Directive 2002/91/EC 	

Agents Note: Whilst every care has been taken to prepare these particulars, they are for guidance purposes only. All measurements are approximate and are for general guidance purposes only and whilst every care has been taken to ensure their accuracy, they should not be relied upon and potential buyers/tenants are advised to recheck the measurements

 HEMMINGS HOMES	OFFICE ADDRESS 376 Brandon Street Motherwell North Lanarkshire ML1 1XA	OFFICE DETAILS 01698 263413 enquiries@hemmingshomes.co.uk hemmingshomes.co.uk
--	---	---