



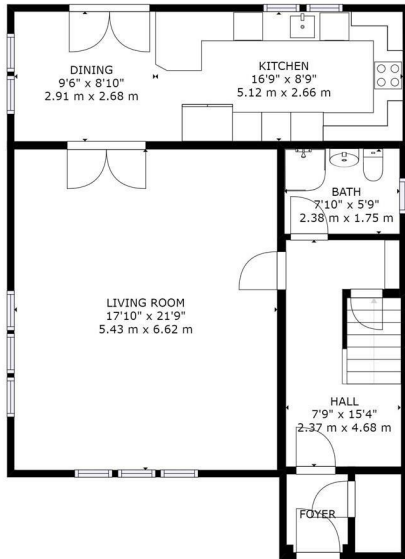
HEMMINGS HOMES

OFFERS OVER

£350,000

Glenpark Street

Wishaw, ML2 7NN



GROSS INTERNAL AREA
FLOOR 1: 858 sq. ft. 80 m², FLOOR 2: 851 sq. ft. 79 m²
FLOOR 3: 428 sq. ft. 40 m², EXCLUDED AREAS:
REDUCED HEADROOM BELOW 1.5M: 34 sq. ft. 3 m²
TOTAL: 2137 sq. ft. 199 m²
SIZES AND DIMENSIONS ARE APPROXIMATE, ACTUAL MAY VARY.

FLOOR 1



Energy Efficiency Rating		Current	Potential
Very energy efficient - lower running costs			
(92 plus) A			
(81-91) B			
(69-80) C			
(55-68) D			
(39-54) E			
(21-38) F			
(1-20) G			
Not energy efficient - higher running costs			
Scotland		EU Directive 2002/91/EC	



Agents Note: Whilst every care has been taken to prepare these particulars, they are for guidance purposes only. All measurements are approximate and are for general guidance purposes only and whilst every care has been taken to ensure their accuracy, they should not be relied upon and potential buyers/tenants are advised to recheck the measurements



HEMMINGS HOMES

OFFICE ADDRESS

376 Brandon Street
Motherwell
North Lanarkshire
ML1 1XA

OFFICE DETAILS

01698 263413
enquiries@hemmingshomes.co.uk
hemmingshomes.co.uk