

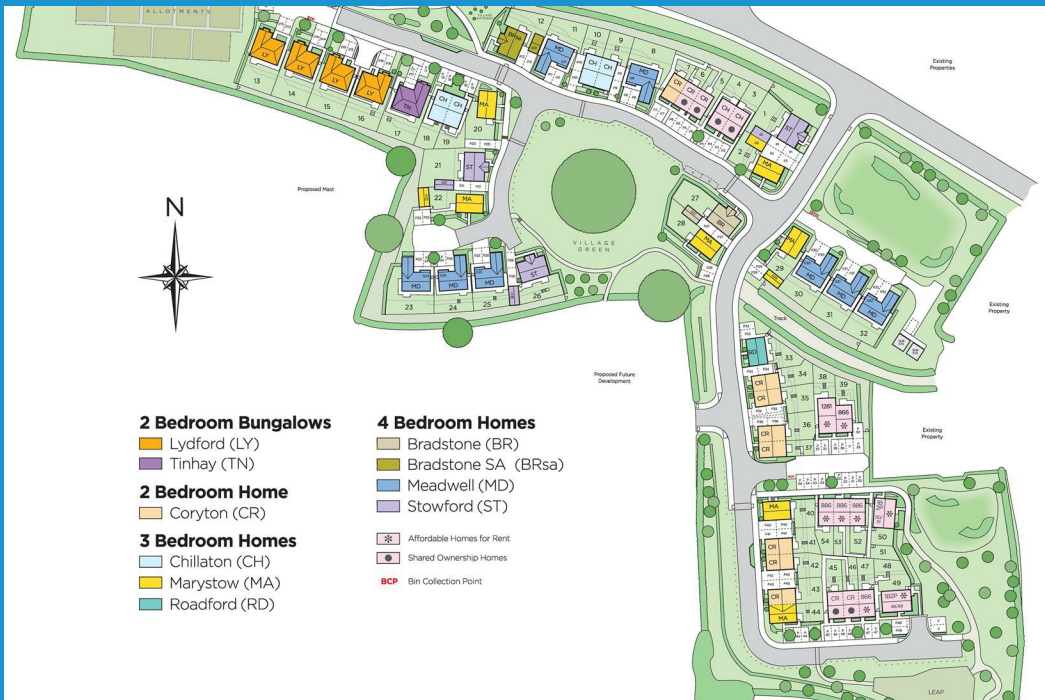


Town • Country • Coast



Fore Street, Lifton
Price Guide £354,950





Fore Street

Lifton

The Marystow is a beautiful three bedroom stone home. There are four of these homes on the development.

The ground floor offers an open plan kitchen / kitchen dining with bifold doors opening out from the dining area to the garden. Great for those summer dinners. There is a good sized lounge, storage cupboard and downstairs WC.

The first floor offers three bedrooms with an ensuite to the principle bedroom. Both bedrooms two and three have storage cupboards and there is a family bathroom just off the landing.

For further information please call View Property on 01566 706706 or sale@viewproperty.org.uk

Entrance Hallway

Cloakroom

Kitchen/Dining Room 18'5" x 9'6" (5.63m x 2.90m)

Living Room 18'5" x 11'0" (5.63m x 3.36m)

First Floor

Master Bedroom 11'5" x 9'1" (3.50m x 2.77m)

En-suite

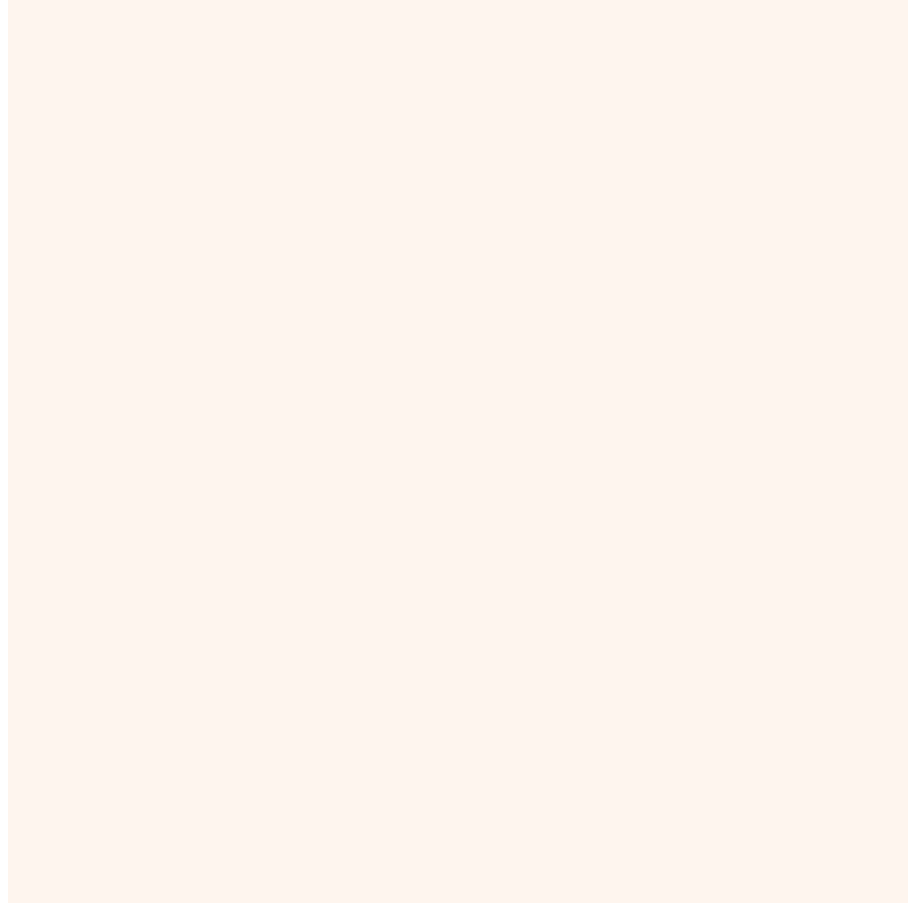
Bedroom 2 11'11" x 9'8" (3.65m x 2.95m)

Bedroom 3 9'8" x 8'5" (2.95m x 2.59m)

Bathroom

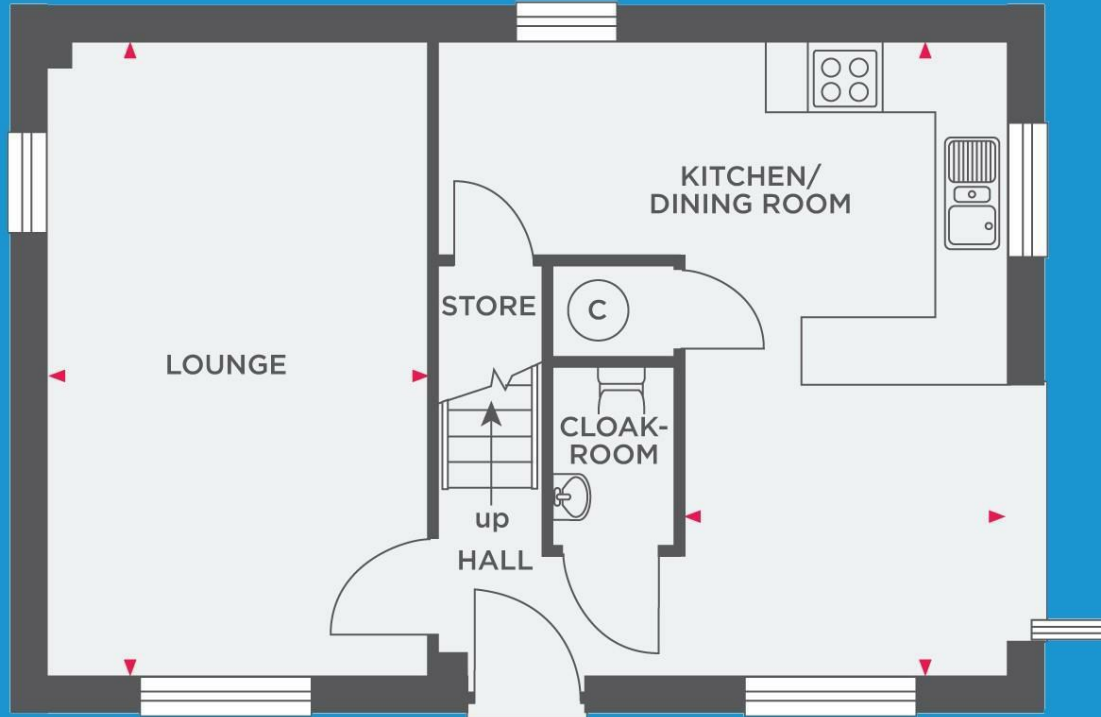
Services

Directions



Floor Plans

Ground Floor



Location Map



Energy Performance Graph

Energy Efficiency Rating		Current	Potential
<i>Very energy efficient - lower running costs</i>			
(92 plus)	A		
(81-91)	B		
(69-80)	C		
(55-68)	D		
(39-54)	E		
(21-38)	F		
(1-20)	G		
<i>Not energy efficient - higher running costs</i>			
England & Wales		EU Directive 2002/91/EC	

Viewing

Please contact our View Property Launceston Office on 01566 706706 if you wish to arrange a viewing appointment for this property or require further information.

The particulars are set out as a general outline only for the guidance of intended purchasers or lessees, and do not constitute, any part of a contract. Nothing in these particulars shall be deemed to be a statement that the property is in good structural condition or otherwise nor that any of the services, appliances, equipment or facilities are in good working order. Purchasers should satisfy themselves of this prior to purchasing.

Office 1 Unit 3 Scarne Industrial Estate, Launceston, Cornwall, PL15 9HS
 Tel: 01566 706706 Email: sales@viewproperty.org.uk www.viewproperty.org.uk