



28 Park Avenue, Chippenham, SN14 0HA

NO ONWARD CHAIN! A spacious and extended two bedroom semi detached house ideally situated in a quiet cul-de-sac within easy walking distance of the town centre and mainline station. The well presented accommodation offers an entrance hall, dining room with bay window and feature fireplace opening through to a good size sitting room with useful understairs storage cupboard, a generous kitchen/breakfast room with a range of fitted units and granite worksurfaces, large main bedroom, second double bedroom and a refitted shower room. Other benefits include double glazing and gas central heating. To the front is a driveway and extensive block paved area providing ample off road parking leading to an attached single garage. To the rear is a good size landscaped garden with large patio area, lawn and a good size summerhouse.

Situation

The property is most conveniently situated towards the end of a cul-de-sac within walking distance of the town centre, mainline rail station, primary and senior schools and the picturesque delightfully maintained John Coles Park. The property is within walking distance of many of the towns sports facilities. M4 J.17 is c.4 miles north providing swift access to the major centres of Swindon, Bristol and Bath.

Accommodation Comprising:

Obscure double glazed entrance door to:

Entrance Hall

Stairs to first floor. Radiator. Luxury vinyl tiled floor. Door to:

Dining Area

Double glazed bay window to front. Feature electric fireplace with surround and hearth. Luxury vinyl tiled floor. Opening to:

Sitting Room

Double glazed window to rear. Radiator. Luxury vinyl tiled floor. Understairs cupboard. Door to:

Kitchen/Breakfast Room

Two double glazed windows to rear. Double glazed door to rear. Radiator. Range of drawer and cupboard base units with wall mounted cupboards. Granite worksurfaces with tiled splashbacks and undermounted stainless steel sink unit with chrome mixer tap. Integrated slimline dishwasher. Space for

cooker with extractor over. Space for fridge/freezer. Space and plumbing for washing machine. Multi-glazed door to garage.

First Floor Landing

Double glazed window to side. Doors to:

Bedroom One

Double glazed window to front. Radiator. Two built-in double wardrobes (one housing gas fired combination boiler). Wood laminate flooring.

Bedroom Two

Double glazed window to rear. Radiator. Wood laminate flooring.

Refitted Shower Room

Obscure double glazed window to rear. Radiator. Large walk-in shower. Vanity wash basin with chrome mixer tap and cupboard under. Close coupled WC.

Outside

Front Garden

Low level wall with opening to driveway leading to garage providing off road parking with the remainder block paved to provide additional parking.

Garage

Up and over door. Power and light.

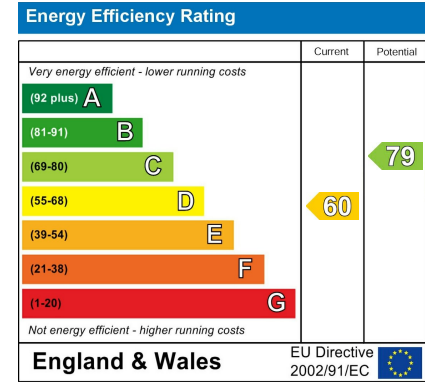
Rear Garden

Good size enclosed garden. Extensive paved seating area. Area of lawn with shrub border. Large summer house. Outside tap.

Directions

From the town centre proceed up New Road under the railway arches and into Marshfield Road. Stay in the left hand lane and proceed over the mini roundabout onto Bristol Road. Take the second left into Park Avenue and follow the road around the right hand bend and the property will be found on the right hand side.

ENERGY PERFORMANCE GRAPHS



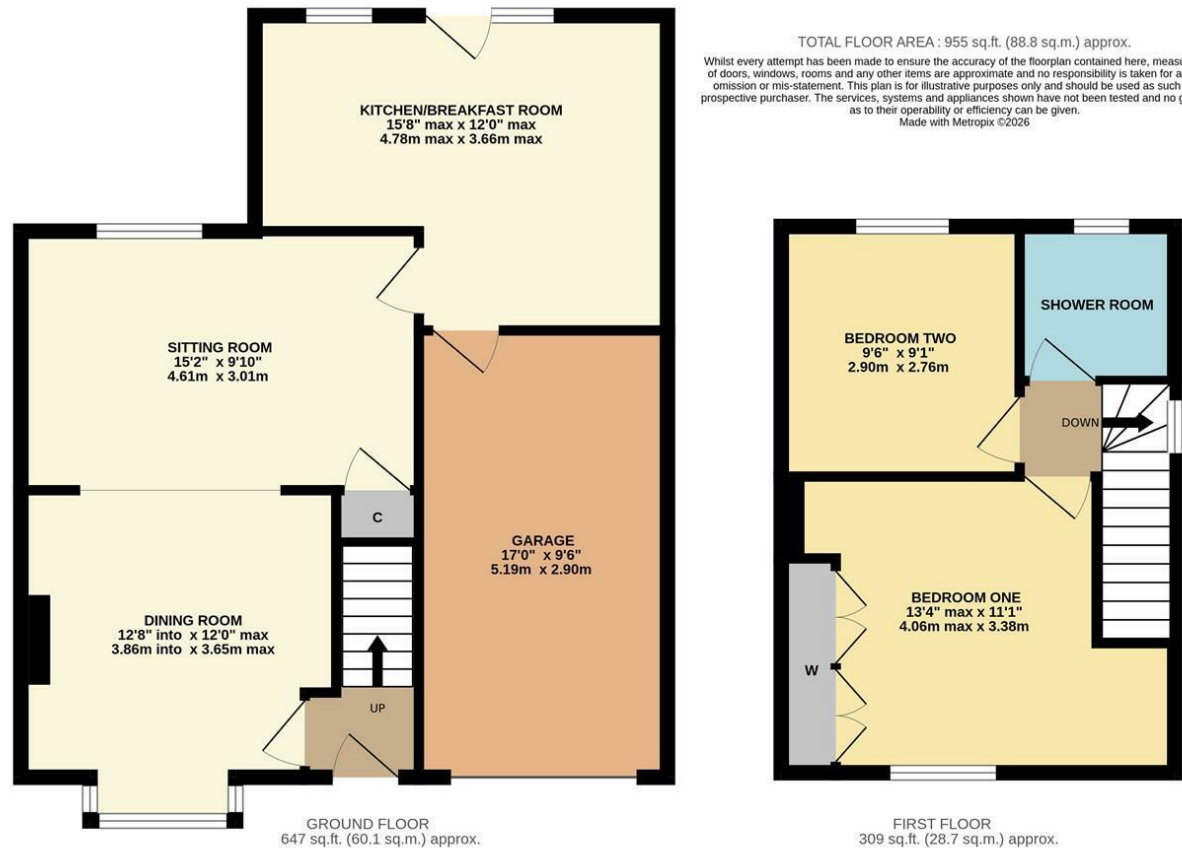
Council Tax Band: C

Tenure: Freehold

GOODMAN WARREN BECK

64 Market Place
Chippenham, Wiltshire SN15 3HG
Tel 01249 444449 | Fax 01249 448989
Email info@goodmanwb.co.uk

£315,000



DISCLAIMER: These particulars, whilst believed to be accurate are set out as a general outline only for guidance and do not constitute any part of an offer or contract. Intending purchasers should not rely on them as statements of representation of fact, but must satisfy themselves by inspection or otherwise as to their accuracy. No person in this firm's employment has the authority to make or give any representation or warranty in respect to this property. We have not carried out a detailed survey not tested the services, appliances and specific fittings. All measurements and distances are approximate only. Room sizes should not be relied upon for carpets and furnishings. References to the tenure of the property are based on information supplied by the seller. The agent has not had sight of the title documents. A buyer is advised to obtain verification from their solicitor. Your home is at risk if you do not keep up repayments on a mortgage or other load secured on it. Floor plans (not to scale, for illustrative purposes only)