





14 Hillcrest, Chippenham, SN14 8BP

An improved and extended four bedroom semi detached house situated in this most sought after area offering easy access to countryside walks. The spacious family home offers c.1800 sq ft of accommodation arranged over three floors with the ground floor offering a welcoming entrance porch with cloakroom, inner hallway, a good size sitting room with French doors opening into a double glazed conservatory, a generous 'L' shaped open plan kitchen/dining/family room with a range of fitted units, French doors to the garden and a separate utility room. The first floor boasts a large master bedroom, second double bedroom, third bedroom with a stairs to mezzanine sleeping area and a family bathroom with a white suite and over bath shower. The top floor then offers a light and airy bedroom currently being used as an additional reception room with study area. Other benefits include uPVC double glazing and gas central heating. To the front is a lawned garden with shrubs and driveway providing off road parking. To the rear is a good size mature garden enjoying a good degree of privacy with the added benefit of a garden office and store.

Situation

Accommodation Comprising:  
Wooden entrance door to:

Entrance Porch

Vaulted ceiling with skylight. Radiator. Tiled floor with fitted door mat. Glazed door to hallway. Door to:

Cloakroom

Obscure double glazed window to front. Electric chrome ladder radiator. Wall hung wash basin with chrome mixer tap and tiled splashback. Close coupled WC. Tiled floor. Extractor.

Hallway

Stairs to first floor with cupboard under. Radiator. Doors to:

Sitting Room

Radiator. Feature cast iron fireplace with wood burning stove set on stone hearth. Solid wood flooring. Picture rails. French doors and side panels to:

Conservatory

uPVC double glazed on brick built base with French doors to side.

Kitchen/Dining/Family Room

Double glazed window to front and rear. Double glazed French doors to rear. Two radiators. Range of drawer and cupboard base units with matching wall mounted cupboards. Solid wood worksurfaces and upstands with belfast sink and mixer tap. Built-in electric hob with tiled splash back and stainless steel extractor over. Built-in eye level double oven. Space and plumbing for dishwasher. Space for fridge/freezer. Spotlights. Door to:

Utility Room

Double glazed window to front. Double glazed door to side. Radiator. Cupboard base unit. Rolled edge worksurfaces with tiled splashbacks and inset single bowl single drainer

Rear Garden

Paved seating area with the remainder being laid to lawn with shrub borders, two raised vegetable beds, apple tree and further seating area. Enclosed by timber fencing and hedging.

Garden Office

8'9" x 7'4"  
uPVC double glazed window to side. uPVC double glazed door to side. Electric heating. Engineered oak flooring.

Garden Store

Useful storage area to the rear of the garden office.

Directions

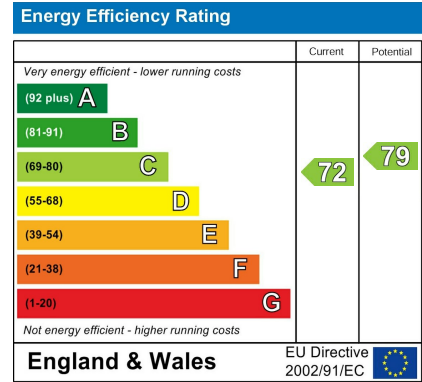
From Chippenham proceed out on the A420 road for about 5 miles to the village of Ford, turning left where signposted to Colerne, After c.2 miles and before the main village of Colerne, Proceed past Lucknam Park and shortly afterwards turn left into Valley Way. Hillcrest can be found immediately on the left hand side.

Agents Notes

There is an improvement indicator showing against the council tax band for this property.

In owning the property, you become an equal shareholder of the private estate. Annual service charge is currently £180.

ENERGY PERFORMANCE GRAPHS



Council Tax Band: C

Tenure: Freehold

GOODMAN WARREN BECK

64 Market Place  
Chippenham, Wiltshire SN15 3HG  
Tel 01249 444449 | Fax 01249 448989  
Email info@goodmanwb.co.uk

Price Guide £430,000

stainless steel sink unit with chrome mixer tap. Space and plumbing for automatic washing machine. Wall mounted cupboards. Larder cupboard. Corner cupboard.

First Floor Landing

Double glazed window to front. Stairs to second floor. Cupboard housing replacement Worcester boiler. Doors to:

Bedroom One

Two double glazed windows to rear. Radiator.

Bedroom Two

Double glazed window to rear. Radiator. Cupboard.

Bedroom Three

Double glazed window to front. Radiator. Stairs to:

Mezzanine

Skylight to rear. Eaves storage.

Bathroom

Obscure double glazed window to front. Ladder radiator. Panelled bath with chrome mixer tap, shower attachment and screen. Tiling to principal areas. Pedestal wash basin with chrome mixer tap and tiled splashback. Close coupled WC. Storage cupboard. Tiled floor. Spotlights.

Second Floor Landing

Skylight to front. Door to:

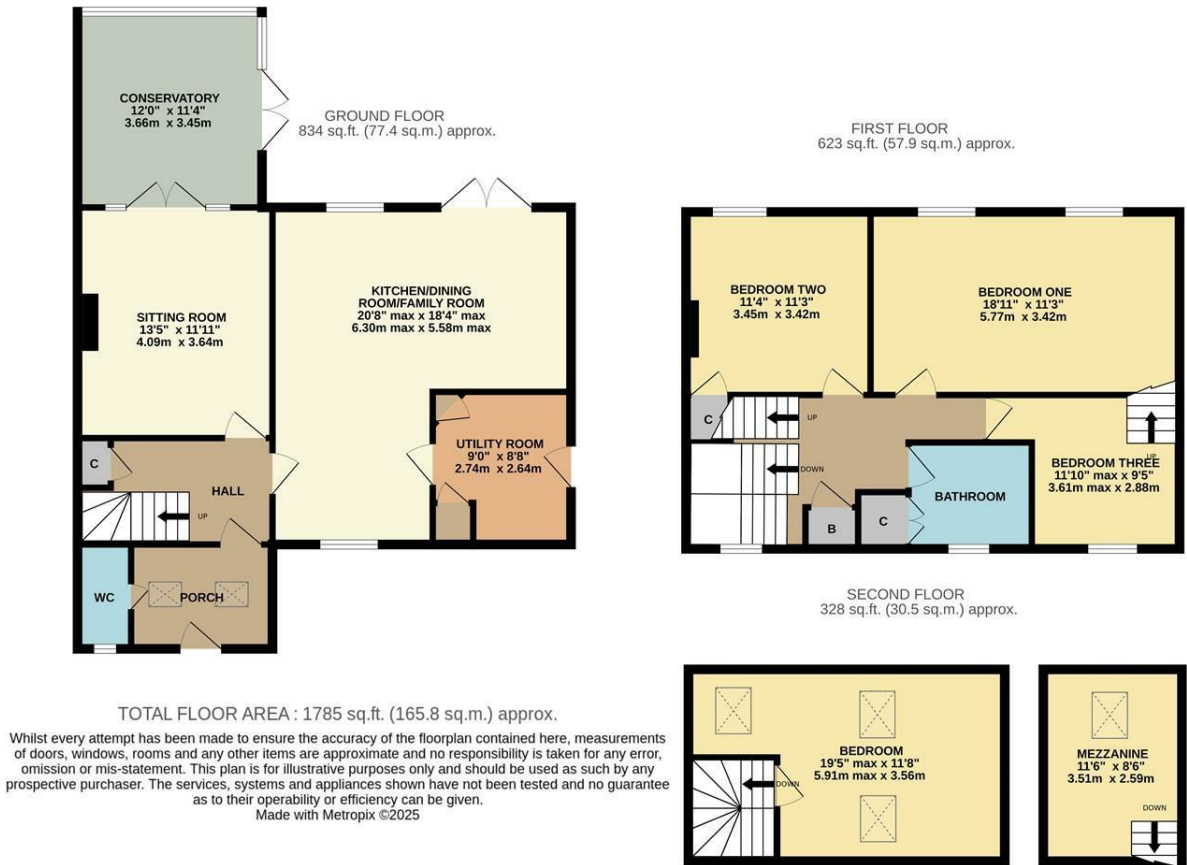
Bedroom Four

Two skylights to rear. Skylight to front. Eaves storage.

Outside

Front Garden

Laid to lawn with path to front door. Gated access to rear garden. Driveway providing off road parking.



DISCLAIMER: These particulars, whilst believed to be accurate are set out as a general outline only for guidance and do not constitute any part of an offer or contract. Intending purchasers should not rely on them as statements of representation of fact, but must satisfy themselves by inspection or otherwise as to their accuracy. No person in this firm's employment has the authority to make or give any representation or warranty in respect to this property. We have not carried out a detailed survey not tested the services, appliances and specific fittings. All measurements and distances are approximate only. Room sizes should not be relied upon for carpets and furnishings. References to the tenure of the property are based on information supplied by the seller. The agent has not had sight of the title documents. A buyer is advised to obtain verification from their solicitor. Your home is at risk if you do not keep up repayments on a mortgage or other load secured on it. Floor plans (not to scale, for illustrative purposes only)