



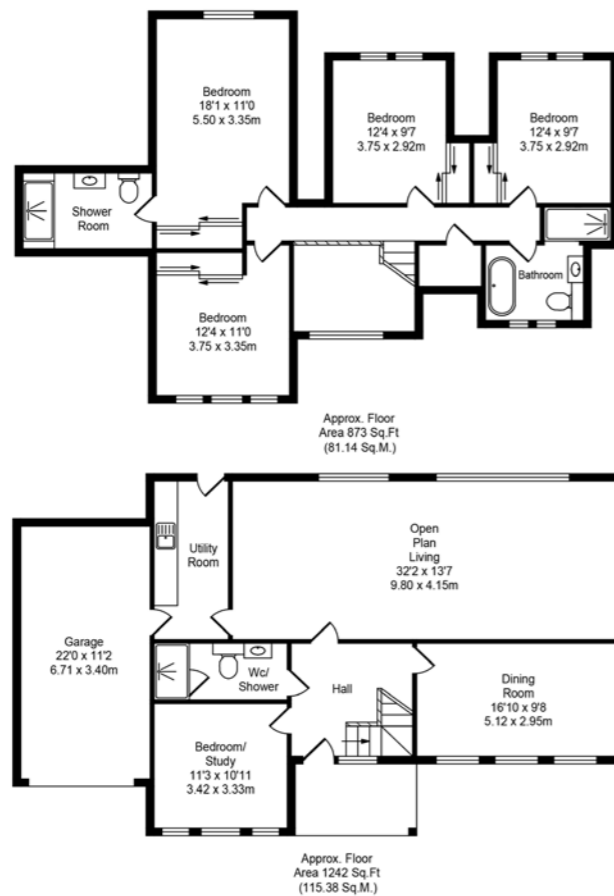
Ormskirk: 01695 570102
 Southport: 01704 778668
 arnoldandphillips.com

Parbold: 01257 442789
 Chorley: 01257 241173

ARNOLD & PHILLIPS
 ESTATE AGENTS

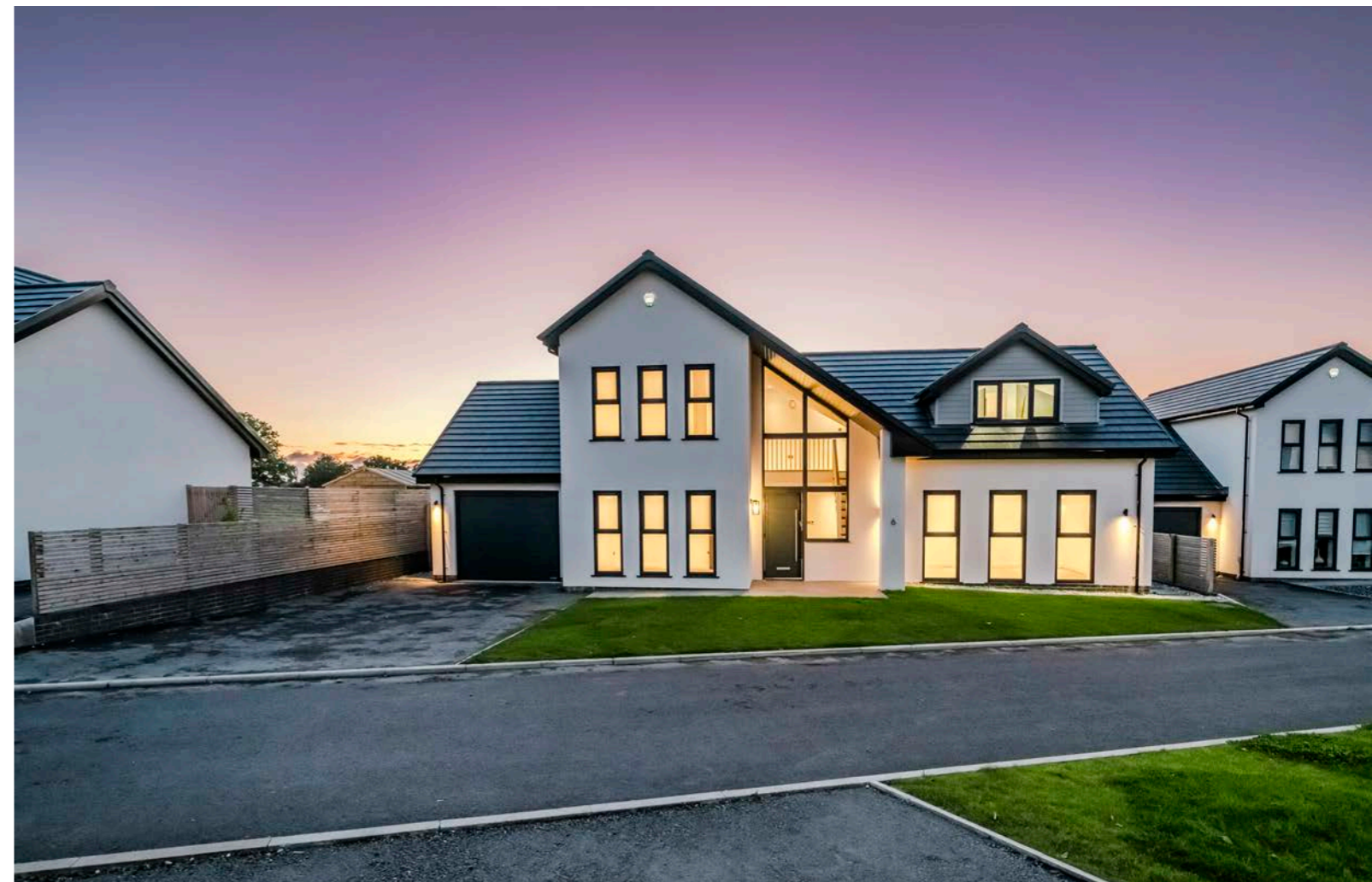
Total Approx. Floor Area 2115 Sq.ft. (196.52 Sq.M.)

Whilst every effort is made to accurately reproduce these floor plans, measurements are approximate, not to scale and for illustrative purposes only



Tenure: We are advised by our client that the property is Freehold
 Council Tax Band: G

Every care has been taken with the preparation of these property details but they are for general guidance only and complete accuracy cannot be guaranteed. If there is any point, which is of particular importance professional verification should be sought. These property details do not constitute a contract or part of a contract. We are not qualified to verify tenure of property. Prospective purchasers should seek clarification from their solicitor or verify the tenure of this property for themselves by visiting www.landregisteronline.gov.uk. The mention of any appliances, fixtures or fittings does not imply they are in working order. Photographs are reproduced for general information and it cannot be inferred that any item shown is included in the sale. All dimensions are approximate.



THE LUXURY PROPERTY SPECIALISTS

Plot 6, The Stables, Whittingham

A&P

In the dynamic realm of residential architecture, a stunning new development of seven executive-style villa houses has emerged, redefining the concept of modern living. Nestled between the charming village of Goosnargh and the lively market town of Longridge, these newly constructed homes not only offer luxurious comfort but also boast breathtaking views that stretch across open fields to the iconic Beacon Fell. Crafted with precision by William Thompson Homes, this development seamlessly integrates traditional craftsmanship with contemporary design, promising an exceptional living experience. A testament to thoughtful design each villa serves as a remarkable example of meticulous design and quality construction.

Upon entering, residents are greeted by an attractive entrance hall, which includes a convenient shower and WC room. The layout is both versatile and functional; two reception rooms at the front can easily be repurposed as additional bedrooms, catering to various family dynamics. This flexibility showcases the developer's dedication to creating spaces that adapt to changing lifestyles, whether for families, professionals, or multi-generational living. The heart of the home is the contemporary living kitchen, a space designed to blend indoor and outdoor living harmoniously. With expansive views of the landscaped gardens through large windows and elegant bi-fold doors, residents can effortlessly transition from the comfort of their home to the serenity of nature. This kitchen is not just a cooking space, it's a social hub, featuring a sophisticated design with a mix of light and dark grey units, a stunning quartz worksurface, and a spacious central island that invites gatherings. Equipped with high-end Bosch appliance including a single oven, combi microwave, warming drawer, induction hob with a built-in extractor, full-height fridge freezer, and dishwasher. this kitchen speaks to quality and efficiency. Additionally, the underfloor heating throughout the ground floor ensures a cosy atmosphere, ideal for family gatherings or entertaining guests. Adjacent to the kitchen is the utility, this room emphasises functionality without sacrificing style.

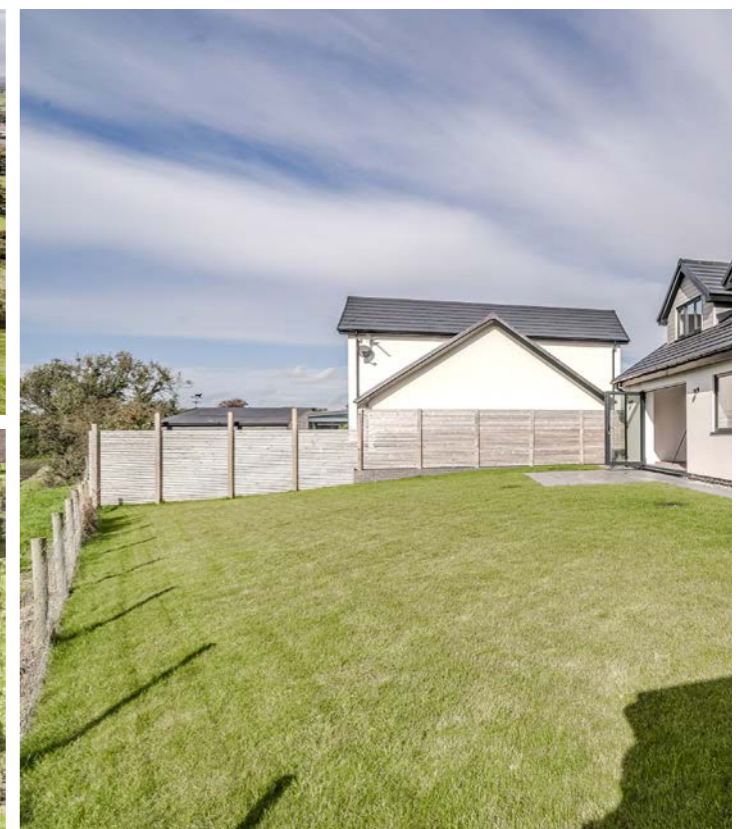
The elegant staircase leading to the first floor adds a touch of sophistication, enhancing the overall charm of the home. The first floor of each villa offers a tranquil retreat designed for relaxation and rejuvenation. Here, four generously sized bedrooms await, each featuring large windows that fill the spaces with natural light and present stunning views of the surrounding countryside. The master bedroom stands out with its luxurious en-suite bathroom, complete with high-quality fixtures that create a spa-like atmosphere, perfect for unwinding after a long day. The additional bedrooms are equally well-appointed, providing ample space for family members or guests, and they share a beautifully designed family bathroom that continues the theme of elegance and comfort.

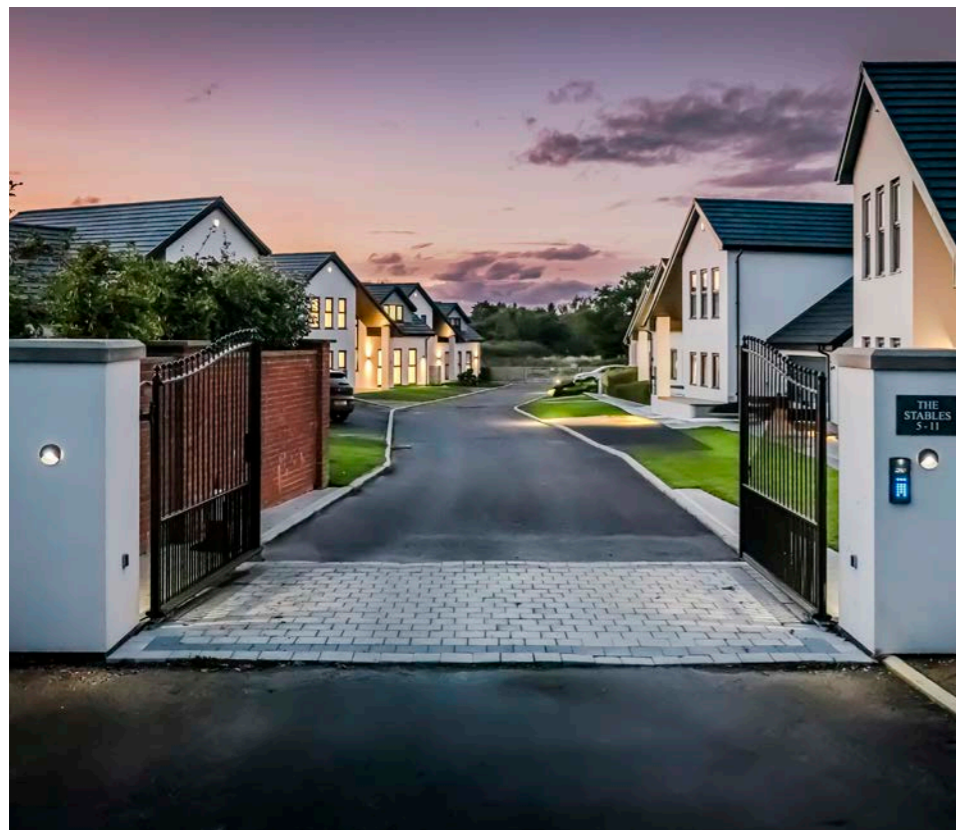
The outdoor areas of these executive villas are as thoughtfully designed as the interiors. Each property is complemented by meticulously landscaped gardens that offer a peaceful escape from the hustle and bustle of everyday life. These gardens are perfect for hosting summer barbeques or simply enjoying a quiet afternoon with a book. The seamless flow from indoor living areas to outdoor spaces reinforces the modern luxury ethos of the development, allowing residents to fully embrace the beauty of their surroundings.

In an age where sustainability is paramount, these villas incorporate numerous eco-friendly elements. High-quality insulation, energy-efficient windows, and advanced heating systems work together to reduce energy consumption, enabling residents to enjoy their luxurious lifestyle while being mindful of their ecological footprint. Moreover, the integration of smart home technology enhances convenience and security, allowing homeowners to effortlessly control various aspects of their living environment.

Living in Goosnargh offers more than just exquisite homes; it fosters a strong sense of community and a connection to nature. The village, steeped in history and charm, features a variety of local amenities, including shops, cafés, and schools. The nearby Longridge market town enriches the experience with diverse dining and shopping options. For outdoor enthusiasts, the surrounding countryside provides ample opportunities for walking, cycling, and exploring the scenic landscape, including the picturesque Beacon Fell.

The development of these seven executive villas in Goosnargh sets a new benchmark for modern luxury living. By combining thoughtful design, high-quality construction, and a commitment to sustainability, William Thompson Homes has created a unique residential experience that caters to the evolving needs of today's homeowners. As residents settle into their new homes, they will discover not only a beautiful living space but also a welcoming community that enhances their quality of life.





KEY FEATURES

- Eco Friendly Executive Detached Home
- Gated Development
- Four Bedrooms with Ensuite to Master
- Circa 2115 Square Feet
- Two Reception Rooms
- Open Plan Kitchen/Dining/Family Room
- Driveway Parking
- Garage
- Amazing Views
- Sought After Location



Concept only not the actual property





Concept only not the actual property



