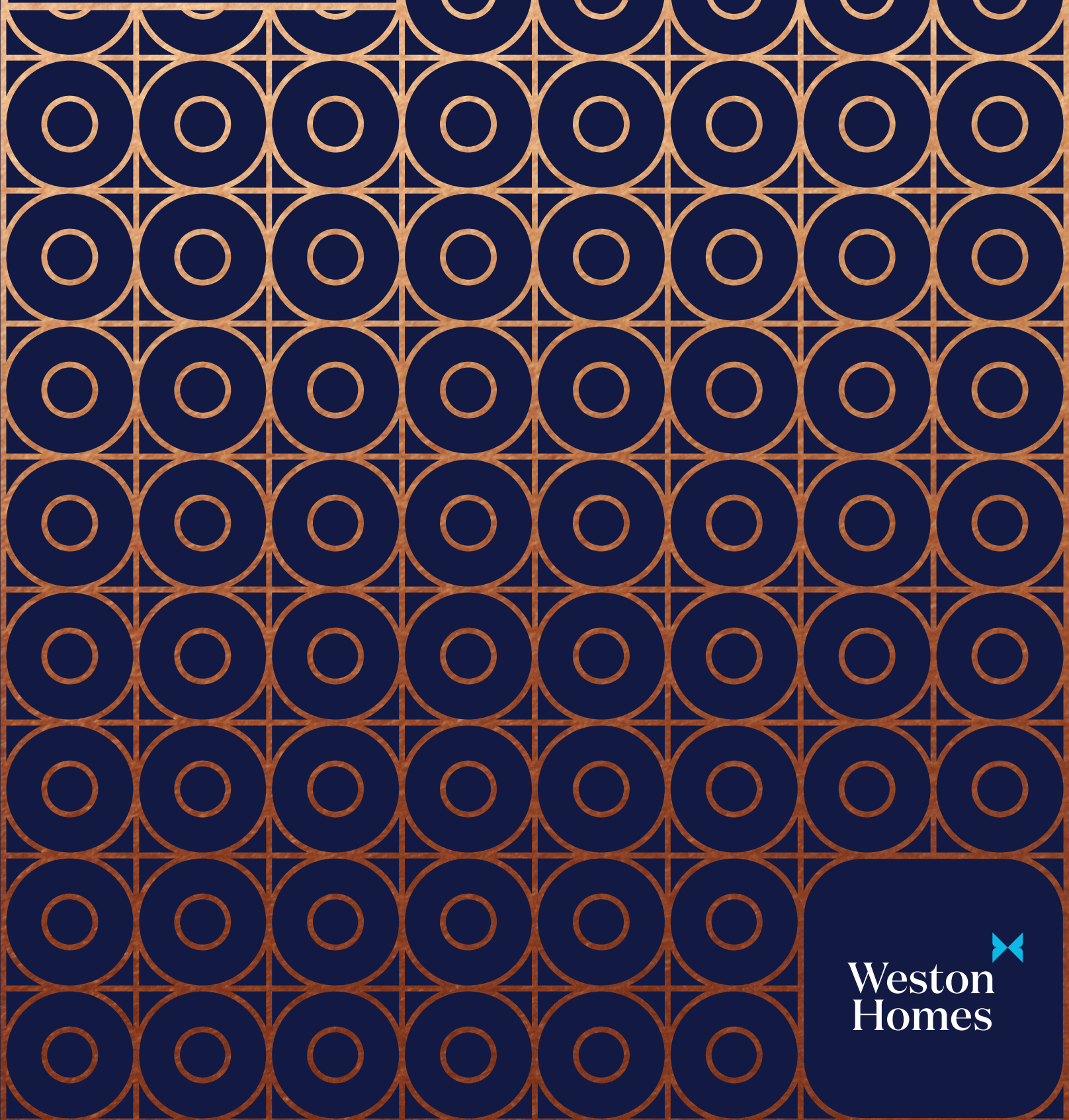




MADE IN WATFORD



Weston  
Homes



## A FRESH START

Welcome to The Laundry Works, an exciting new development of 1, 2 and 3 bedroom apartments and penthouses.

Created on the site of the old Watford Laundry Factory that laundered for London's 5-star hotels, The Old Bailey and Harrow School across its 105-year history, The Laundry Works features eight architecturally distinctive apartment buildings set within a wide tree-lined boulevard with attractive landscaped podium gardens throughout.

The Laundry Works will see the creation of a thriving new residential neighbourhood within an area noted for its green spaces and decidedly village-like feel. Enjoy the laid-back lifestyle but be close to the buzz of city life with excellent connections to central London and beyond.





# A BRIGHTER WAY OF LIVING

Enjoy all this and more at  
The Laundry Works:



## Great location

- Just a 10-minute walk to Watford Underground station (Metropolitan line)
- A great choice of shops, dining out and leisure options, all within walking distance
- Enjoy a fun day out at one of Watford's many attractions



## Local green spaces

- Meet your neighbours in the attractive landscaped podium gardens
- Relax in nearby Cassiobury Park, Watford's largest open space
- Enjoy peaceful walks at Whippendell Wood



## Inspiring interiors

- Stylish and flexible living spaces
- Floor to ceiling windows fill apartments with natural light
- Choose from 28 bespoke kitchen choices
- Enjoy a premium specification as standard



## Smart living

- Well-conceived interior features included throughout such as boiling water taps
- Integrated appliances included
- Parking available to many properties

Journey times are indicative only and sourced from tfl.gov.uk and Google Maps.

Computer Generated Image (CGI) is indicative only.





# FALL IN LOVE WITH THE LAUNDRY WORKS

It's the combination of many stand-out features that makes living at The Laundry Works so special. From exclusive home benefits such as the exceptional specification, a great location surrounded by green space, to the peace of mind that comes with knowing your four-legged friend is welcome too.

Here are the Top Ten highlights:

**1** **EXTEND YOUR LIFE OUTSIDE**  
Almost every home features a private balcony or terrace.

**2** **ENJOY SUPERFAST BROADBAND**  
From the moment you move in.

**3** **PERFECTLY CONNECTED FOR WORK AND PLAY**  
Close to Watford Underground station or hire a car for adventure days.

**4** **WELCOMING FOR YOU AND YOUR BEST FRIEND**  
Dogs are welcome\*.



HOME SWEET HOME.  
HOME COMFORTS.



**5** **ACRES OF COUNTRYSIDE ON YOUR DOORSTEP**  
Be spoilt for choice with parks and outdoor space.

**6** **MEET YOUR NEIGHBOURS**  
In the tranquil landscaped podium gardens.

**7** **A VILLAGE-LIKE VIBE**  
Enjoy the best of both: a laid-back lifestyle but near to the buzz of town.



**8** **PLENTY OF CYCLE STORAGE**  
Makes it easy to get about on two wheels.

**9** **CREATE YOUR DREAM HOME**  
Flexible, neutrally decorated living space to make your own with our wide range of inclusive choices.

**10** **JUST MOVE IN – IT'S ALL INCLUDED!**  
Full range of appliances and flooring provided throughout and state-of-the-art bathrooms.



\*Subject to approval by the management company.





Computer Generated Image (CGI) is indicative only.





# CLOSE TO THE ACTION



The Laundry Works is perfectly placed to enjoy a relaxed lifestyle; surrounded by glorious green spaces, but within walking distance to the centre of town and key transport connections.

Watford Underground station on the Metropolitan line is only a 10-minute walk away with trains calling at Baker Street and Euston. Watford Junction is also in the town centre with trains heading to Wembley Central in 22 minutes and London Euston in 24 minutes.

The magnificent Cassiobury Park is only a gentle 20-minute stroll away and you can even walk to the great shops and leisure opportunities at Atria Watford in half an hour (only 9 minutes by car).



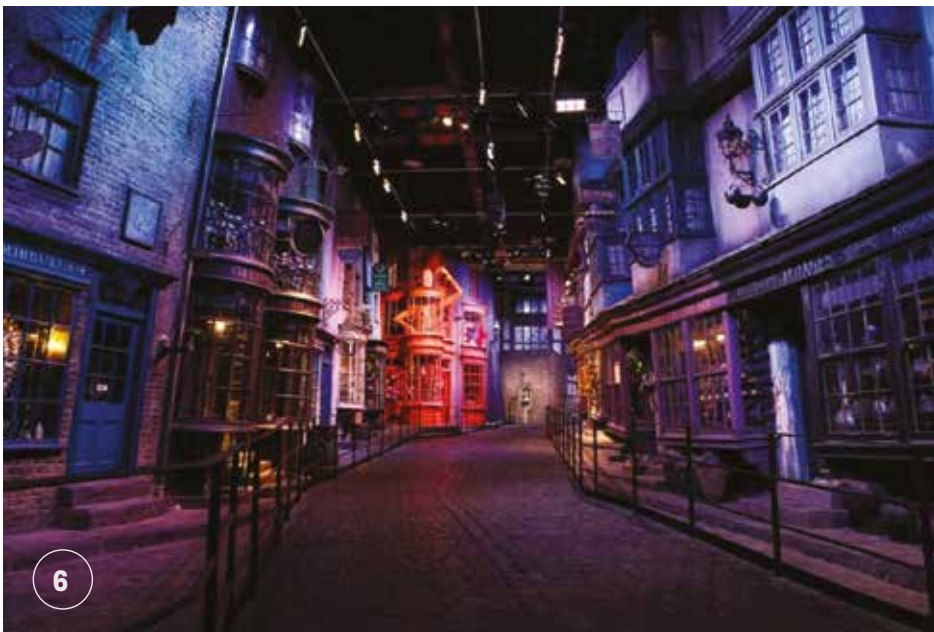
# LIVE THE WATFORD WAY

It's easy to see why Watford is consistently rated high on the list of the UK's happiest places to live with its vibrant mix of dining, entertainment, culture and green spaces. This is an area that provides all the ingredients for a rich and varied lifestyle.

Award-winning parks and golf clubs, a thriving town centre filled with shops, restaurants, cafés and nightclubs and plenty of cultural destinations to visit – there is no shortage of things to do. The top shopping destination, Atria Watford, is also nearby featuring over 140 shops, restaurants and leisure facilities all under one roof.



THE VARIETY OF LIFE  
HEART OF THE ACTION



1. **Atria Watford**  
watford-shopping.co.uk
2. **Whippendell Wood**  
woodlandtrust.org.uk
3. **The Florist**  
theflorist.uk.com
4. **Pump Gyms**  
pumpgyms.com
5. **Watford Palace Theatre**  
watfordpalacetheatre.co.uk
6. **Warner Bros. Studio Tour London**  
wbstudiotour.co.uk
7. **Watford Market**  
watfordmarket.co.uk
8. **The Big Screen Event**  
watfordbigevents.co.uk
9. **Vicarage Road Stadium**  
watfordfc.com
10. **Top Golf**  
topgolf.com
11. **Rabbani's**  
rabbanisindian.co.uk
12. **Tarboush**  
tarboushwatford.co.uk





FOR A SENSE OF WELLBEING . ENJOY THE OUTDOORS .

CASSIOBURY PARK, WATFORD'S LARGEST OPEN SPACE, IS NEARBY. THIS AWARD-WINNING GREEN SPACE HAS BEEN VOTED ONE OF THE UK'S TOP TEN PARKS.



# A BREATH OF FRESH AIR

Award-winning parks, ancient woodlands, lush golf courses and the waterside calm of the River Gade and Grand Union Canal, The Laundry Works is perfectly placed to enjoy all of this and more.

Cassiobury Park is only a short walk away, this expansive park (twice the size of London's Hyde Park) is a local favourite, a place to escape busy life for a relaxing walk or a leisurely picnic with friends. Highlights include great sporting facilities, from a croquet lawn to basketball courts, two cafés and a miniature railway.

For something a little different explore the 165 acres of historic woodland at Whippendell Wood, cherished locally for its natural beauty, rich mix of wildlife and glorious collection of bluebells, or head to the canal and while away a few hours watching the boats go by, or even try your hand at fishing.

The council's Big Events programme holds an impressive selection of free outdoor events throughout the year including fireworks at Cassiobury Park and an outdoor cinema experience, The Big Screen.



THE GRAND UNION CANAL, WHICH PASSES THROUGH WATFORD, IS THE LONGEST CANAL IN THE UK AT 137 MILES, AND RUNS FROM LONDON TO BIRMINGHAM.









THE DIFFERENCE IS CLEAR CUT. THE PERFECT FINISH.



# DRESSED TO IMPRESS

All homes at The Laundry Works are expertly designed to adapt to busy 21st century lives, with flexible interiors to accommodate work, rest and play. Whether that's extra play space for a young family or a desk area for home working – the possibilities are endless.

Living here is easy with the impressive array of integrated tech and time-saving features, which come as standard, from the instant boiling water tap in the kitchen to the digitally controlled smart taps in the bathrooms. The apartments are also Hyperoptic broadband enabled, a super-reliable service that is over 11 times faster than the UK's average broadband speed, so you can stream and download to your heart's content.\*

Choice is a big part of the offer at The Laundry Works, with a range of finishes available for you to choose from so you can create the perfect look for your home. Select from an inspiring collection of handles, designer units and worktops for your kitchen, the perfect shade for your bathroom cabinetry, floor and wall tiles, and your strip flooring and carpet colours. The choice really is up to you.\*\*



\* Average speeds taken from Ofcom's 'UK Home Broadband Performance' measurement period May 2021.

\*\* Choices are subject to build stage – please speak to a Sales Advisor for details.





# THE FINISHING TOUCHES

The stylish homes at The Laundry Works all feature contemporary, open-plan living areas, superb bespoke designer kitchens and luxury bathrooms, all finished to the highest standards with modern living in mind.



## DESIGNER KITCHENS:

- Wide choice of designer units and handles by Oakwood Kitchens\*
- Choice of quartz stone worktops and upstands\*
- Stainless steel splashback to hob
- Full range of integrated appliances from Zanussi:
  - Stainless steel electric fan oven
  - Fridge/freezer
  - Washer/dryer
  - Ceramic hob
  - Dishwasher
- Caple stainless steel chimney extractor
- Fascino stainless steel sink with oversized single bowl and integrated removable chopping board
- Fascino designer curved tap with clipped hose-spray extension
- Fascino instant boiling water and cold filtered water tap
- Integrated stainless steel soap dispenser
- LED lighting under kitchen wall units



## LUXURY BATHROOMS & ENSUITES:

- Fascino digitally controlled smart tap
- Smart mirror with LED lighting, shaver socket, digital clock and de-mist pad
- Vanity units with integrated storage space in a choice of three finishes\*
- Sleek, arctic white sinks, beautifully finished with a silky matt feel
- Arctic white shower trays and baths in matt finish with sleek stainless steel waste cover
- RAK Ceramics Hygiene+ WC with RAKRimless™ pan and soft-close ergonomic design seat
- Fascino smart shower and smart bath
- Heated chrome towel rails
- Choice of RAK Ceramics porcelain wall and floor tile colour with polished and matt finishes\*
- Low-level LED strip lighting to bath

Designed to offer ease of maintenance and running efficiency, these homes provide a fully comprehensive specification to enable you to start enjoying your new lifestyle from the moment you move in. With Hyperoptic superfast broadband to each home. The Laundry Works is perfectly placed to remain fully connected both inside and out. Choose from a wide range of options to personalise your home and make it truly your own.



## GENERAL FINISHES:

- Forest oak doors with polished chrome ironmongery matching door-linings, architraves and skirtings
- Choice of strip flooring to entrance hall, living area, dining area, kitchen and cloakrooms/cupboards\*
- Choice of carpets with underlay to bedrooms\*
- Fitted wardrobes to master bedroom
- Television and telephone points to living area and master bedroom
- USB double power sockets to kitchen and master bedroom
- Smoke alarm and CO<sup>2</sup> detectors
- Double-glazed windows and doors
- Audio/visual entry system to apartments accessed via communal entrance doors



## CONNECTIVITY:

- Hyperoptic broadband enabled – subject to contract



## HEATING:

- Electric panel heating throughout

\* Choices from Weston Homes range and subject to stage of construction.



Photographs are indicative only and show interior layouts from a similar development.







Computer Generated Image (CGI) is indicative only.



# LIVE IN YOUR COMFORT ZONE

The stylish mix of 1, 2 and 3 bedroom apartments and penthouses are set within eight distinctive buildings of varying heights.

Nearly all apartments feature a private terrace or balcony and the landscaped podium gardens add to the sense of green space overall and access to the outdoors.

**GIBBONS HOUSE**

8 apartments

**WYATT HOUSE**

34 apartments

**BRIDGEMAN HOUSE**

8 apartments

**REPTON HOUSE**

77 apartments

**COOKE HOUSE**

11 apartments

**MAY HOUSE**

51 apartments

**CAPELL HOUSE**

14 apartments

**VERRIO HOUSE**

19 apartments





APARTMENT DIRECTORY



ONE BEDROOM			
APARTMENT	TYPE	BUILDING	PAGE NO.
4	The Kensington	Gibbons House	32
7	The Kensington	Gibbons House	32
36	The Holywell	Wyatt House	33
43	The Holywell	Wyatt House	33
72	The Kensington	Bridgeman House	32
75	The Kensington	Bridgeman House	32
77	The Jellicoe	Repton House	34
78	The Silkmill	Repton House	35
82	The Waterman	Repton House	36
83	The Jellicoe	Repton House	34
89	The Waterman	Repton House	36
90	The Jellicoe	Repton House	34
96	The Waterman	Repton House	36
97	The Jellicoe	Repton House	34
103	The Waterman	Repton House	36
104	The Jellicoe	Repton House	34
110	The Waterman	Repton House	36
111	The Jellicoe	Repton House	34
117	The Waterman	Repton House	36
118	The Jellicoe	Repton House	34
124	The Waterman	Repton House	36
129	The Waterman	Repton House	36
134	The Waterman	Repton House	36
139	The Waterman	Repton House	36
144	The Waterman	Repton House	36
149	The Waterman	Repton House	36
157	The Kensington	Cooke House	32
160	The Kensington	Cooke House	32
163	The Kensington	Cooke House	32
169	The Beechcroft	May House	37
170	The Beechcroft	May House	37
175	The Beechcroft	May House	37
180	The Beechcroft	May House	37
185	The Beechcroft	May House	37
190	The Beechcroft	May House	37
195	The Beechcroft	May House	37
200	The Beechcroft	May House	37
204	The Beechcroft	May House	37
208	The Beechcroft	May House	37
212	The Beechcroft	May House	37
220	The Oxford	Capell House	38
224	The Oxford	Capell House	38
227	The Oxford	Capell House	38
232	The Copthorne	Verrio House	39
235	The Copthorne	Verrio House	39
238	The Copthorne	Verrio House	39
241	The Copthorne	Verrio House	39
244	The Copthorne	Verrio House	39
247	The Copthorne	Verrio House	39

TWO BEDROOM			
APARTMENT	TYPE	BUILDING	PAGE NO.
1	The Whippendell	Gibbons House	40
2	The Belgrave	Gibbons House	41
3	The Chester	Gibbons House	42
6	The Chester	Gibbons House	42
39	The Clifton	Wyatt House	43
40	The Pioneer	Wyatt House	44
41	The Healey	Wyatt House	45
46	The Clifton	Wyatt House	43
48	The Healey	Wyatt House	45
47	The Pioneer	Wyatt House	44
51	The Clifton	Wyatt House	43
52	The Pioneer	Wyatt House	44
55	The Clifton	Wyatt House	43
56	The Pioneer	Wyatt House	44
59	The Clifton	Wyatt House	43
60	The Pioneer	Wyatt House	44
63	The Clifton	Wyatt House	43
64	The Pioneer	Wyatt House	44
67	The Clifton	Wyatt House	43
68	The Pioneer	Wyatt House	44
69	The Whippendell	Bridgeman House	40
70	The Belgrave	Bridgeman House	41
71	The Chester	Bridgeman House	42
74	The Chester	Bridgeman House	42
79	The Sycamore	Repton House	48
80	The Raven	Repton House	49
81	The Caxton	Repton House	51
84	The Croxley	Repton House	46
85	The Woodshots	Repton House	47
86	The Sycamore	Repton House	48
87	The Raven	Repton House	49
88	The Frankland	Repton House	52
91	The Croxley	Repton House	46
92	The Woodshots	Repton House	47
93	The Sycamore	Repton House	48
94	The Raven	Repton House	49
95	The Hatters	Repton House	50
98	The Croxley	Repton House	46
99	The Woodshots	Repton House	47
100	The Sycamore	Repton House	48
101	The Raven	Repton House	49
102	The Hatters	Repton House	50
105	The Croxley	Repton House	46
106	The Woodshots	Repton House	47
107	The Sycamore	Repton House	48
108	The Raven	Repton House	49
109	The Frankland	Repton House	52
112	The Croxley	Repton House	46
113	The Woodshots	Repton House	47
114	The Sycamore	Repton House	48
115	The Raven	Repton House	49
116	The Frankland	Repton House	52
119	The Croxley	Repton House	46
120	The Woodshots	Repton House	47
121	The Sycamore	Repton House	48
122	The Raven	Repton House	49
123	The Hatters	Repton House	50
125	The Hazelwood	Repton House	53

TWO BEDROOM			
APARTMENT	TYPE	BUILDING	PAGE NO.
126	The Sycamore	Repton House	48
127	The Raven	Repton House	49
128	The Hatters	Repton House	50
130	The Cherry	Repton House	54
131	The Sycamore	Repton House	48
132	The Raven	Repton House	49
133	The Frankland	Repton House	52
135	The Cherry	Repton House	54
136	The Sycamore	Repton House	48
137	The Raven	Repton House	49
138	The Frankland	Repton House	52
140	The Cherry	Repton House	54
141	The Sycamore	Repton House	48
142	The Raven	Repton House	49
143	The Hatters	Repton House	50
145	The Cherry	Repton House	54
146	The Sycamore	Repton House	48
147	The Raven	Repton House	49
148	The Hatters	Repton House	50
150	The Cherry	Repton House	54
151	The Sycamore	Repton House	48
152	The Raven	Repton House	49
153	The Hatters	Repton House	50
154	The Whippendell	Cooke House	40
155	The Belgrave	Cooke House	41
156	The Springfield	Cooke House	55
158	The Springfield	Cooke House	55
159	The Springfield	Cooke House	55
161	The Springfield	Cooke House	55
162	The Springfield	Cooke House	55
164	The Springfield	Cooke House	55
166	The Oakleigh	May House	56
167	The Warwick	May House	58
168	The Linden	May House	63
172	The Mayfare	May House	57
173	The Claremont	May House	59
174	The Elmcote	May House	62
177	The Mayfare	May House	57
178	The Claremont	May House	59
179	The Elmcote	May House	62
182	The Mayfare	May House	57
183	The Claremont	May House	59
184	The Elmcote	May House	62
187	The Mayfare	May House	57
188	The Claremont	May House	59
189	The Elmcote	May House	62
192	The Mayfare	May House	57
193	The Claremont	May House	59
194	The Elmcote	May House	62
197	The Mayfare	May House	57
198	The Claremont	May House	59
199	The Elmcote	May House	62
201	The Mayfare	May House	57
202	The Claremont	May House	59
203	The Elmcote	May House	62
205	The Mayfare	May House	57
206	The Claremont	May House	59
207	The Elmcote	May House	62
209	The Mayfare	May House	57

TWO BEDROOM			
APARTMENT	TYPE	BUILDING	PAGE NO.
210	The Claremont	May House	59
211	The Elmcote	May House	62
213	The Mayfare	May House	57
214	The Claremont	May House	59
215	The Elmcote	May House	62
216	The Cassio	Capell House	60
217	The Oaklands	Capell House	61
218	The Fullerian	Capell House	64
219	The Fearnley	Capell House	66
221	The Marlborough	Capell House	67
222	The Durban	Capell House	65
223	The Fearnley	Capell House	66
225	The Marlborough	Capell House	67
226	The Durban	Capell House	65
228	The Marlborough	Capell House	67
229	The Durban	Capell House	65
230	The Hillcroft	Verrio House	68
231	The Vivian	Verrio House	69
233	The Lavrock	Verrio House	70
234	The Vivian	Verrio House	69
236	The Lavrock	Verrio House	70
237	The Vivian	Verrio House	69
239	The Lavrock	Verrio House	70
240	The Vivian	Verrio House	69
242	The Lavrock	Verrio House	70
243	The Vivian	Verrio House	69
245	The Lavrock	Verrio House	70
246	The Vivian	Verrio House	69
248	The Lavrock	Verrio House	70

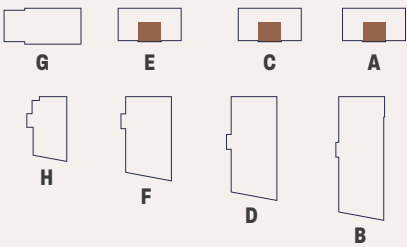
THREE BEDROOM			
APARTMENT	TYPE	BUILDING	PAGE NO.
5	The Rembrandt	Gibbons House	71
8	The Rembrandt	Gibbons House	71
35	The Harwoods	Wyatt House	72
37	The Kelmscott	Wyatt House	73
38	The Rose	Wyatt House	74
42	The Harwoods	Wyatt House	72
44	The Kelmscott	Wyatt House	73
45	The Rose	Wyatt House	74
49	The Kelmscott	Wyatt House	73
50	The Rose	Wyatt House	74
53	The Kelmscott	Wyatt House	73
54	The Rose	Wyatt House	74
57	The Kelmscott	Wyatt House	73
58	The Rose	Wyatt House	74
61	The Kelmscott	Wyatt House	73
62	The Rose	Wyatt House	74
65	The Kelmscott	Wyatt House	73
66	The Rose	Wyatt House	74
73	The Rembrandt	Bridgeman House	71
76	The Rembrandt	Bridgeman House	71
165	The Malkin	May House	75
171	The Malkin	May House	75
176	The Malkin	May House	75
181	The Malkin	May House	75
186	The Malkin	May House	75
191	The Malkin	May House	75
196	The Malkin	May House	75



# THE KENSINGTON

GIBBONS HOUSE, BRIDGEMAN HOUSE, COOKE HOUSE

1 Bedroom  
4, 7, 72, 75, 157, 160, 163



## Dimensions

Kitchen/Living/Dining	6.40m x 4.84m	21'0" x 15'11"
Bedroom	4.29m x 3.02m	14'11" x 9'11"
Total Area	51.7 sq m	556 sq ft
Balcony	3.34m x 1.40m	10'11" x 4'7"

## Key

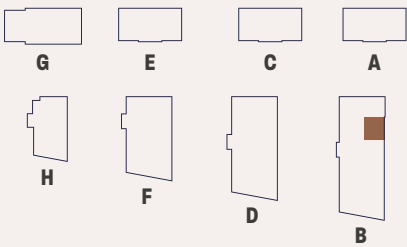
- C
- Cupboard
- W
- Wardrobe

Maximum dimensions are shown. They are intended as a guide only and are subject to change.  
Not all plans are to scale. Please speak to our sales executive for further information.

# THE HOLYWELL

WYATT HOUSE

1 Bedroom  
36, 43



## Dimensions

Kitchen/Living/Dining	6.62m x 4.42m	21'9" x 14'6"
Bedroom	4.51m x 3.03m	14'10" x 9'11"
Total Area	50.6 sq m	544 sq ft
Balcony	2.92m x 1.73m	9'7" x 5'8"

## Key

- C
- Cupboard
- W
- Wardrobe

Maximum dimensions are shown. They are intended as a guide only and are subject to change.  
Not all plans are to scale. Please speak to our sales executive for further information.

## Floor Locator

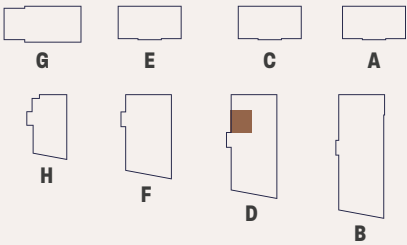
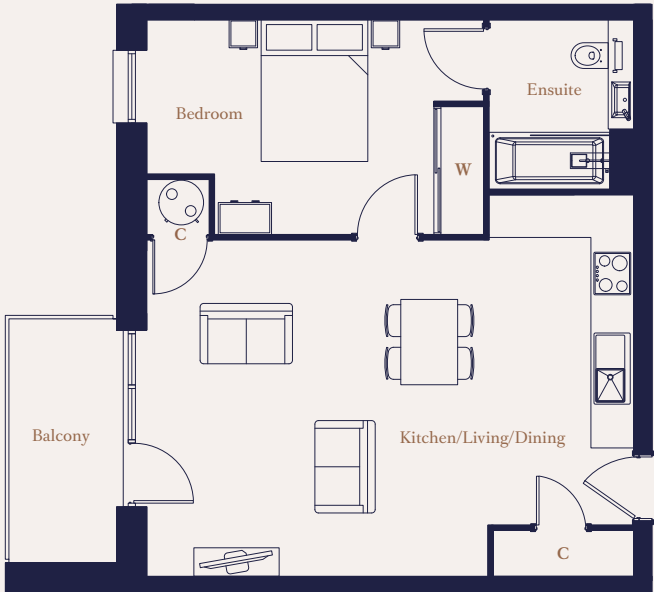
Level	Apartments
12	
11	
10	
9	
8	
7	
6	
5	43
4	36
3	
2	
1	
G	
LG	



# THE JELlicoe

REPTON HOUSE

1 Bedroom  
77, 83, 90, 97, 104, 111, 118



## Dimensions

Kitchen/Living/Dining	6.79m x 4.72m	27'2" x 15'6"
Bedroom	4.71m x 2.98m	15'6" x 9'9"
Total Area	53.7 sq m	578 sq ft
Balcony	3.41m x 1.73m	11'2" x 5'8"

## Key

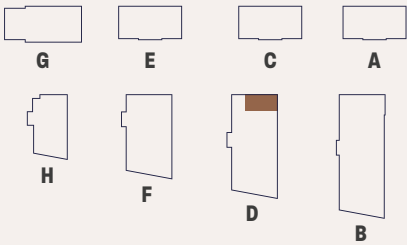
- C Cupboard
- W Wardrobe

Maximum dimensions are shown. They are intended as a guide only and are subject to change.  
Not all plans are to scale. Please speak to our sales executive for further information.

# THE SILKMill

REPTON HOUSE

1 Bedroom  
78



## Dimensions

Kitchen/Living/Dining	6.30m x 4.81m	20'8" x 15'9"
Bedroom	4.32m x 2.70m	14'2" x 8'10"
Total Area	52.2 sq m	562 sq ft
Terrace	3.90m x 1.57m	12'9" x 5'1"

## Key

- C Cupboard
- W Wardrobe

Maximum dimensions are shown. They are intended as a guide only and are subject to change.  
Not all plans are to scale. Please speak to our sales executive for further information.

## Floor Locator

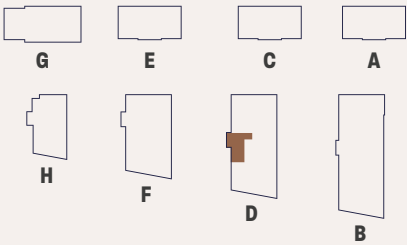
Level	Apartments
12	
11	
10	
9	
8	
7	
6	
5	
4	
3	
2	
1	
G	78
LG	



# THE WATERMAN

REPTON HOUSE

1 Bedroom  
82, 89, 96, 103, 110, 117, 124,  
129, 134, 139, 144, 149



## Dimensions

Kitchen/Living/Dining	5.79m x 4.37m	19'0" x 14'4"
Bedroom	5.28m x 4.11m	17'4" x 13'6"
Total Area	53.3 sq m	574 sq ft
Balcony	3.59m x 1.73m	11'9" x 5'8"

## Key

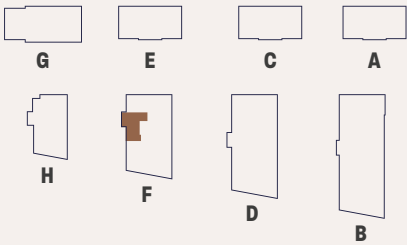
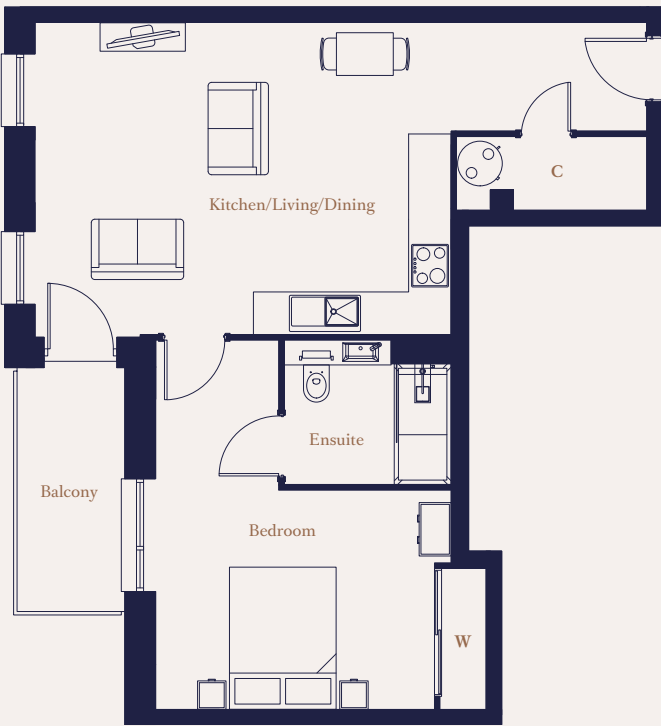
C	Cupboard
W	Wardrobe

Maximum dimensions are shown. They are intended as a guide only and are subject to change.  
Not all plans are to scale. Please speak to our sales executive for further information.

# THE BEEHCROFT

MAY HOUSE

1 Bedroom  
169, 170, 175, 180, 185, 190,  
195, 200, 204, 208, 212



## Dimensions

Kitchen/Living/Dining	5.81m x 4.36m	19'1" x 14'4"
Bedroom	5.16m x 4.59m	16'11" x 15'1"
Total Area	55.8 sq m	601 sq ft
Balcony	3.41m x 1.73m	11'2" x 5'8"

## Key

C	Cupboard
W	Wardrobe

Maximum dimensions are shown. They are intended as a guide only and are subject to change.  
Not all plans are to scale. Please speak to our sales executive for further information.



## Floor Locator

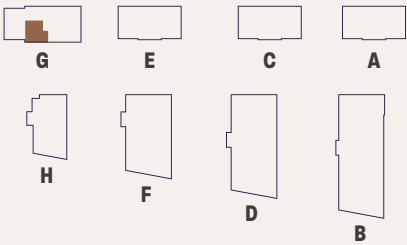
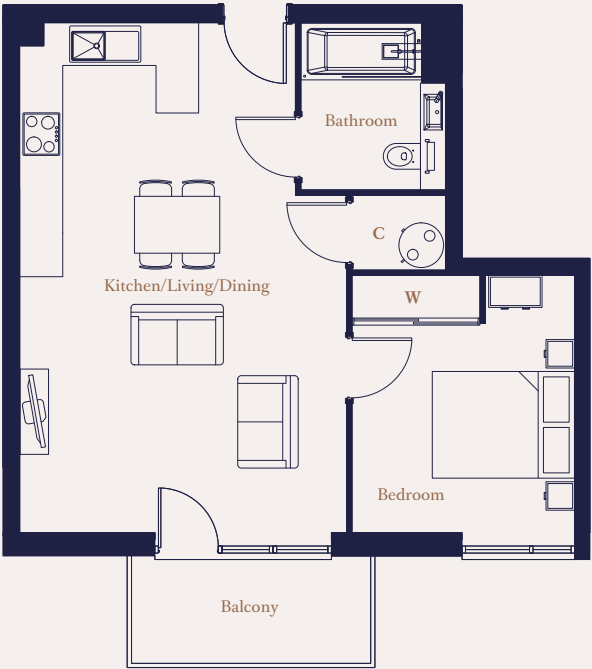
Level	Apartments
12	
11	
10	212
9	208
8	204
7	200
6	195
5	190
4	185
3	180
2	175
1	170
G	169
LG	



# THE OXFORD

CAPELL HOUSE

1 Bedroom  
220, 224, 227



## Dimensions

Kitchen/Living/Dining	7.14m x 4.58m	23'5" x 15'0"
Bedroom	3.59m x 3.11m	11'10" x 10'2"
<b>Total Area</b>	<b>50.0 sq m</b>	<b>538 sq ft</b>
Balcony	3.34m x 1.40m	10'11" x 4'7"

## Key

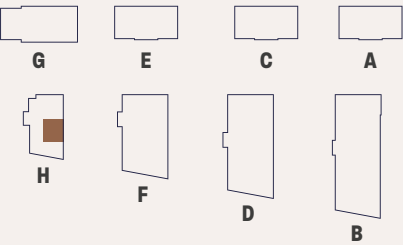
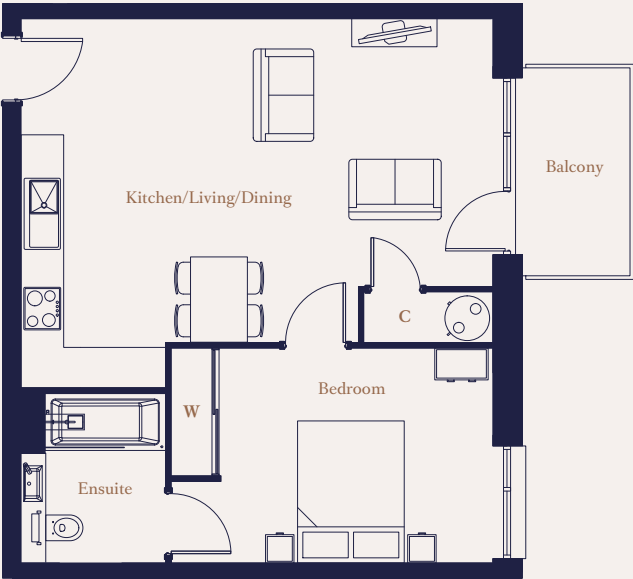
- C Cupboard
- W Wardrobe

Maximum dimensions are shown. They are intended as a guide only and are subject to change.  
Not all plans are to scale. Please speak to our sales executive for further information.

# THE COPTHORNE

VERRIO HOUSE

1 Bedroom  
232, 235, 238, 241, 244, 247



## Dimensions

Kitchen/Living/Dining	6.59m x 4.52m	21'8" x 14'10"
Bedroom	4.47m x 2.98m	14'8" x 9'10"
<b>Total Area</b>	<b>50.7 sq m</b>	<b>546 sq ft</b>
Balcony	2.92m x 1.73m	9'7" x 5'8"

## Key

- C Cupboard
- W Wardrobe

Maximum dimensions are shown. They are intended as a guide only and are subject to change.  
Not all plans are to scale. Please speak to our sales executive for further information.



## Floor Locator

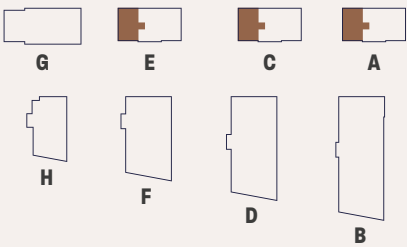
Level	Apartments
12	
11	
10	
9	
8	
7	
6	
5	247
4	244
3	241
2	238
1	235
G	232
LG	



# THE WHIPPENDELL

GIBBONS HOUSE, BRIDGEMAN HOUSE, COOKE HOUSE

2 Bedroom  
1, 69, 154



Dimensions

Kitchen/Living/Dining	6.49m x 4.70m	21'4" x 15'5"
Principal Bedroom	4.00m x 3.24m	13'1" x 10'8"
Bedroom 2	4.05m x 2.79m	13'3" x 9'2"
Total Area	76.7 sq m	825 sq ft
Front Terrace	6.86m x 2.48m	22'6" x 8'1"
Rear Terrace	6.75m x 2.25m	22'1" x 7'4"

Key

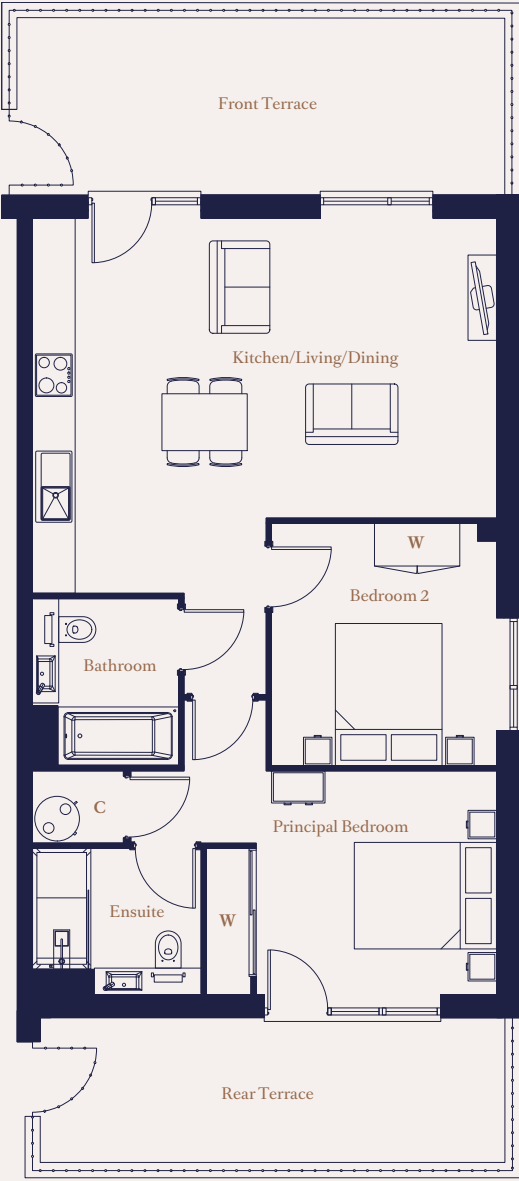
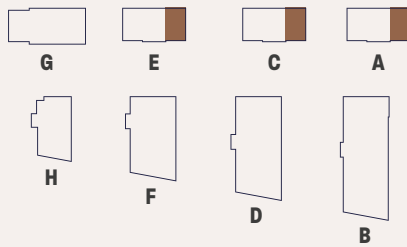
- C Cupboard
- W Wardrobe

Maximum dimensions are shown. They are intended as a guide only and are subject to change.  
Not all plans are to scale. Please speak to our sales executive for further information.

# THE BELGRAVE

GIBBONS HOUSE, BRIDGEMAN HOUSE, COOKE HOUSE

2 Bedroom  
2, 70, 155



Dimensions

Kitchen/Living/Dining	6.49m x 5.25m	21'4" x 17'3"
Principal Bedroom	4.06m x 3.12m	13'4" x 10'3"
Bedroom 2	3.40m x 3.15m	11'2" x 10'4"
Total Area	72.1 sq m	776 sq ft
Front Terrace	6.86m x 2.48m	22'6" x 8'1"
Rear Terrace	6.75m x 2.25m	22'1" x 7'4"

Key

- C Cupboard
- W Wardrobe

Maximum dimensions are shown. They are intended as a guide only and are subject to change.  
Not all plans are to scale. Please speak to our sales executive for further information.



Floor Locator

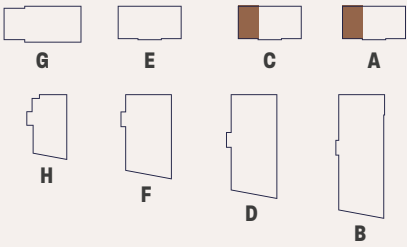
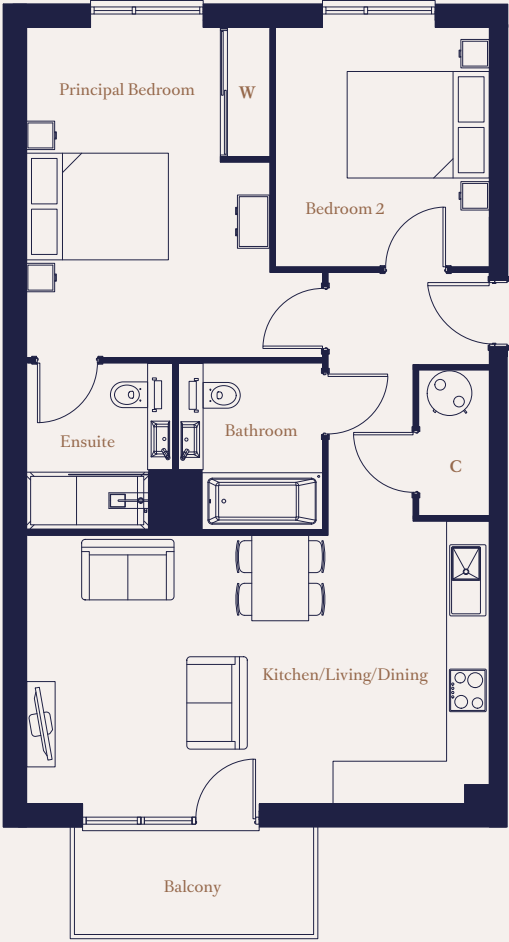
Level	Apartments
12	
11	
10	
9	
8	
7	
6	
5	
4	
3	
2	
1	
G	2 (A), 70 (C), 155 (E)
LG	



# THE CHESTER

GIBBONS HOUSE, BRIDGEMAN HOUSE

2 Bedroom  
3, 6, 71, 74



## Dimensions

Kitchen/Living/Dining	6.49m x 3.75m	21'4" x 12'4"
Principal Bedroom	4.62m x 3.40m	15'2" x 11'2"
Bedroom 2	3.35m x 3.01m	11'0" x 9'11"
Total Area	71.8 sq m	773 sq ft
Balcony	3.34m x 1.40m	10'11" x 4'7"

## Key

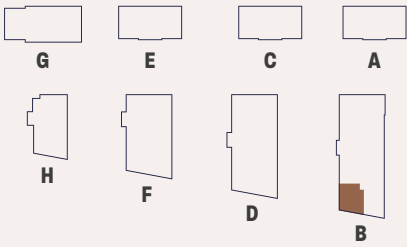
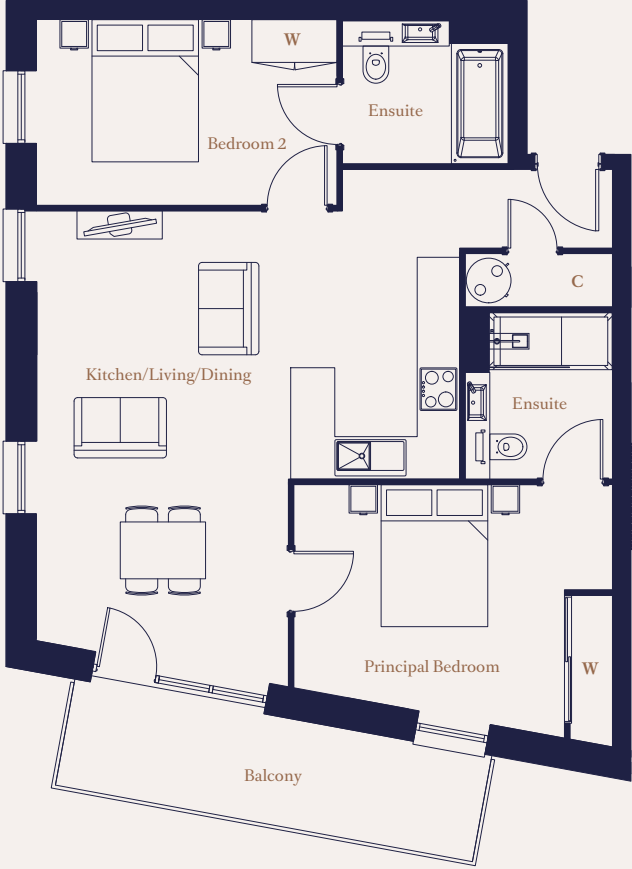
- C Cupboard
- W Wardrobe

Maximum dimensions are shown. They are intended as a guide only and are subject to change. Not all plans are to scale. Please speak to our sales executive for further information.

# THE CLIFTON

WYATT HOUSE

2 Bedroom  
39, 46, 51, 55, 59, 63, 67



## Dimensions

Kitchen/Living/Dining	6.02m x 5.92m	19'9" x 19'5"
Principal Bedroom	4.48m x 3.65m	14'9" x 12'0"
Bedroom 2	4.19m x 2.61m	13'9" x 8'7"
Total Area	74.2 sq m	799 sq ft
Balcony	5.96m x 1.73m	19'6" x 5'8"

## Key

- C Cupboard
- W Wardrobe

Maximum dimensions are shown. They are intended as a guide only and are subject to change. Not all plans are to scale. Please speak to our sales executive for further information.



## Floor Locator

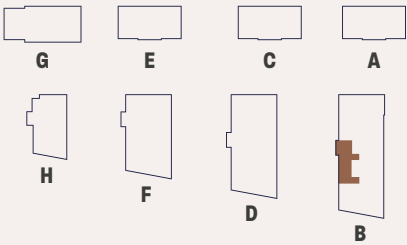
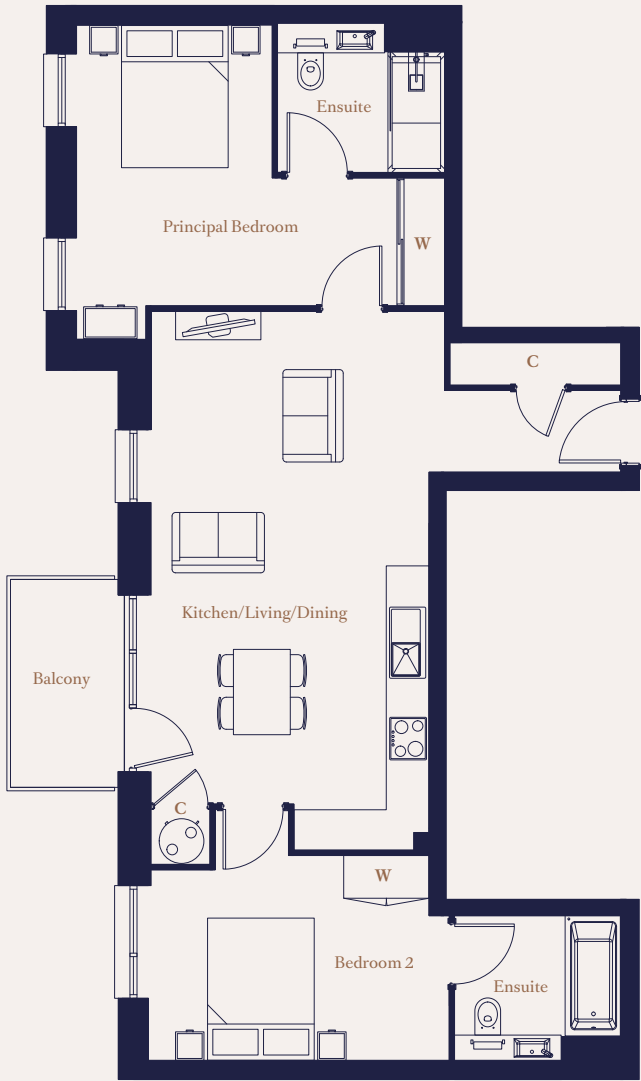
Level	Apartments
12	
11	
10	67
9	63
8	59
7	55
6	51
5	46
4	39
3	
2	
1	
G	
LG	



# THE PIONEER

WYATT HOUSE

2 Bedroom  
40, 47, 52, 56, 60, 64, 68



## Dimensions

Kitchen/Living/Dining	6.93m x 3.90m	22'9" x 12'10"
Principal Bedroom	3.91m x 2.71m	12'10" x 8'11"
Bedroom 2	4.19m x 3.53m	13'9" x 11'7"
Total Area	73.8 sq m	794 sq ft
Balcony	2.92m x 1.73m	9'7" x 5'8"

## Key

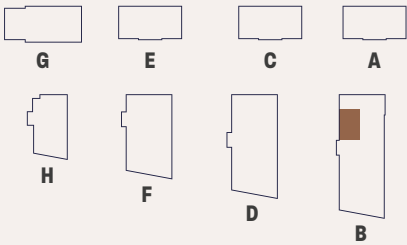
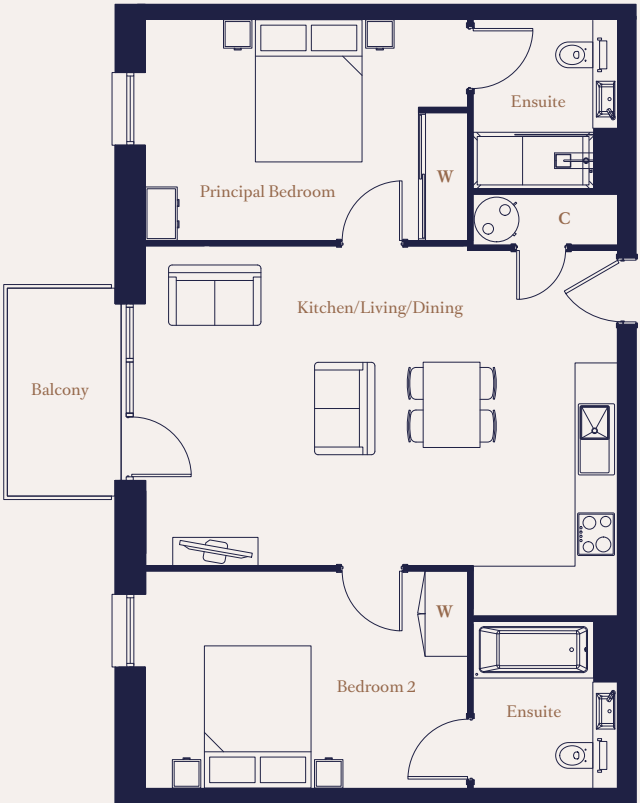
- C Cupboard
- W Wardrobe

Maximum dimensions are shown. They are intended as a guide only and are subject to change.  
Not all plans are to scale. Please speak to our sales executive for further information.

# THE HEALEY

WYATT HOUSE

2 Bedroom  
41, 48



## Dimensions

Kitchen/Living/Dining	6.60m x 4.49m	21'8" x 14'9"
Principal Bedroom	4.49m x 3.07m	14'9" x 10'1"
Bedroom 2	4.49m x 3.05m	14'9" x 10'0"
Total Area	72.1 sq m	776 sq ft
Balcony	2.92m x 1.73m	9'7" x 5'8"

## Key

- C Cupboard
- W Wardrobe

Maximum dimensions are shown. They are intended as a guide only and are subject to change.  
Not all plans are to scale. Please speak to our sales executive for further information.



## Floor Locator

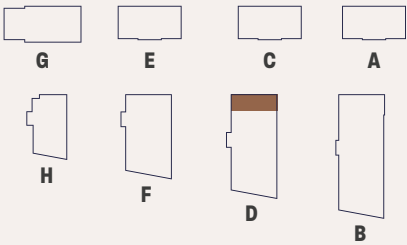
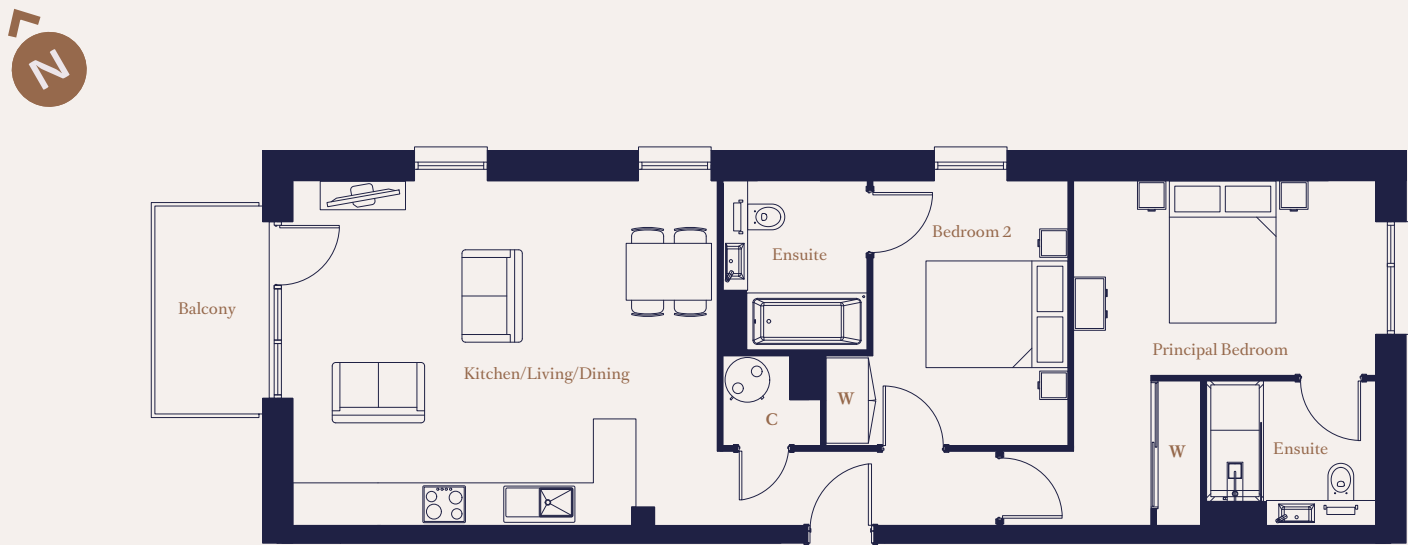
Level	Apartments
12	
11	
10	
9	
8	
7	
6	
5	48
4	41
3	
2	
1	
G	
LG	



# THE CROXLEY

REPTON HOUSE

2 Bedroom  
84, 91, 98, 105, 112, 119



### Dimensions

Kitchen/Living/Dining	5.93m x 4.80m	19'6" x 15'9"
Principal Bedroom	4.21m x 2.70m	13'10" x 8'10"
Bedroom 2	3.69m x 3.41m	12'1" x 11'2"
<b>Total Area</b>	<b>74.3 sq m</b>	<b>800 sq ft</b>
Balcony	2.92m x 1.73m	9'7" x 5'8"

### Key

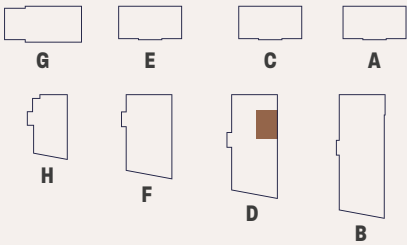
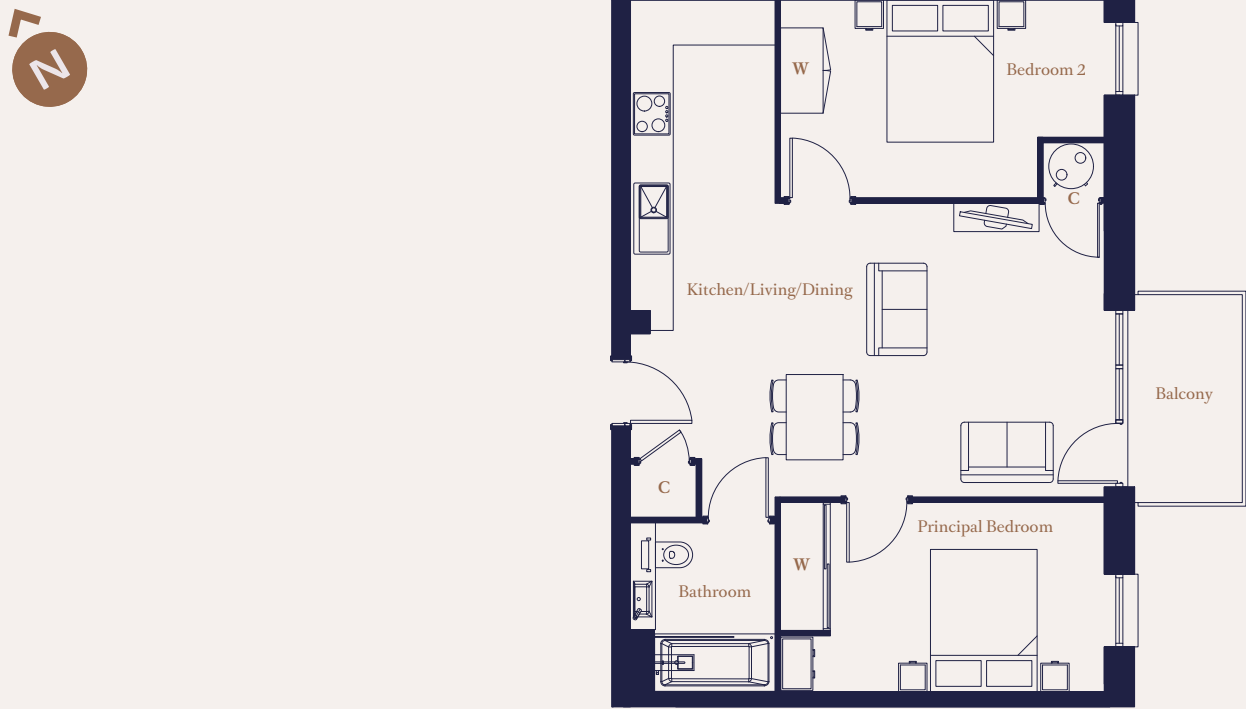
- C Cupboard
- W Wardrobe

Maximum dimensions are shown. They are intended as a guide only and are subject to change.  
Not all plans are to scale. Please speak to our sales executive for further information.

# THE WOODSHOTS

REPTON HOUSE

2 Bedroom  
85, 92, 99, 106, 113, 120



### Dimensions

Kitchen/Living/Dining	6.96m x 6.63m	22'10" x 21'9"
Principal Bedroom	4.51m x 2.62m	14'10" x 8'7"
Bedroom 2	4.52m x 2.75m	14'10" x 9'1"
<b>Total Area</b>	<b>65.0 sq m</b>	<b>700 sq ft</b>
Balcony	2.92m x 1.73m	9'7" x 5'8"

### Key

- C Cupboard
- W Wardrobe

Maximum dimensions are shown. They are intended as a guide only and are subject to change.  
Not all plans are to scale. Please speak to our sales executive for further information.

### Floor Locator

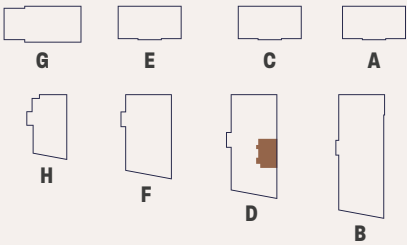
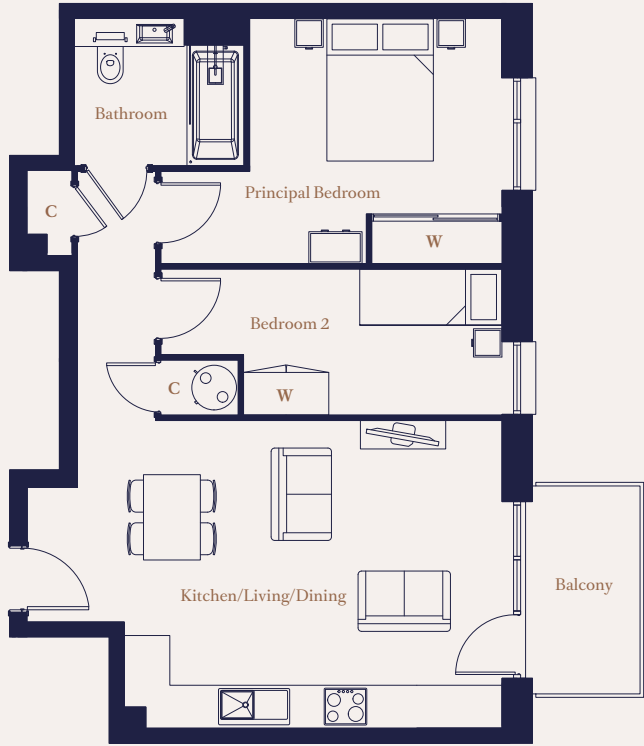
Level	Apartments
12	
11	
10	
9	
8	
7	
6	120
5	113
4	106
3	99
2	92
1	85
G	
LG	



# THE SYCAMORE

REPTON HOUSE

2 Bedroom  
79, 86, 93, 100, 107, 114, 121,  
126, 131, 136, 141, 146, 151



## Dimensions

Kitchen/Living/Dining	6.64m x 4.29m	21'9" x 14'1"
Principal Bedroom	4.76m x 3.41m	15'8" x 11'2"
Bedroom 2	4.76m x 2.05m	15'8" x 6'9"
Total Area	60.9 sq m	655 sq ft
Balcony	2.92m x 1.73m	9'7" x 5'8"

## Key

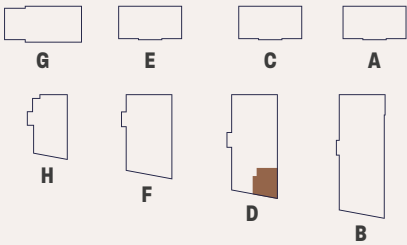
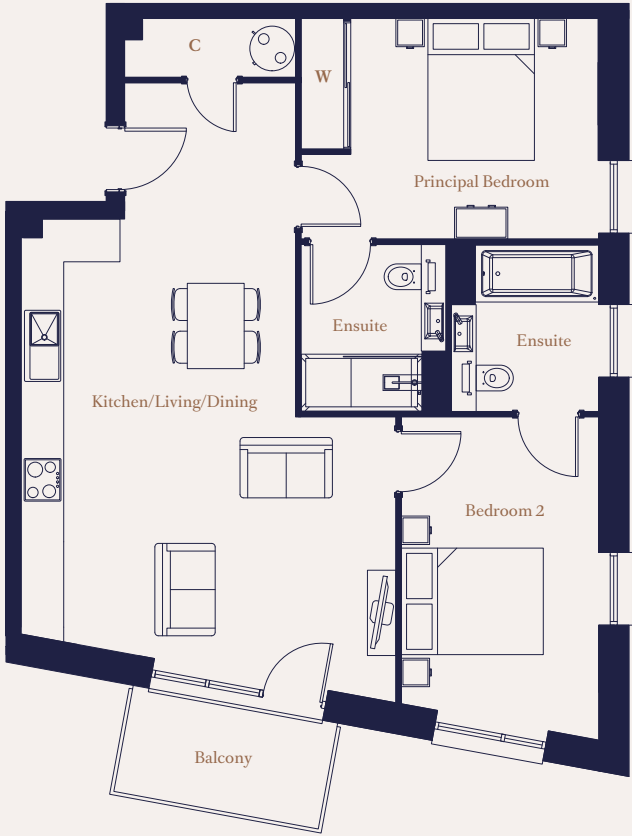
- C Cupboard
- W Wardrobe

Maximum dimensions are shown. They are intended as a guide only and are subject to change.  
Not all plans are to scale. Please speak to our sales executive for further information.

# THE RAVEN

REPTON HOUSE

2 Bedroom  
80, 87, 94, 101, 108, 115, 122,  
127, 132, 137, 142, 147, 152



## Dimensions

Kitchen/Living/Dining	8.67m x 5.24m	28'6" x 17'2"
Principal Bedroom	4.14m x 3.07m	13'7" x 10'1"
Bedroom 2	4.49m x 2.73m	14'9" x 9'0"
Total Area	72.6 sq m	781 sq ft
Balcony	2.92m x 1.73m	9'7" x 5'8"

## Key

- C Cupboard
- W Wardrobe

Maximum dimensions are shown. They are intended as a guide only and are subject to change.  
Not all plans are to scale. Please speak to our sales executive for further information.



## Floor Locator

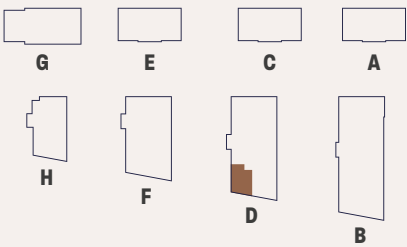
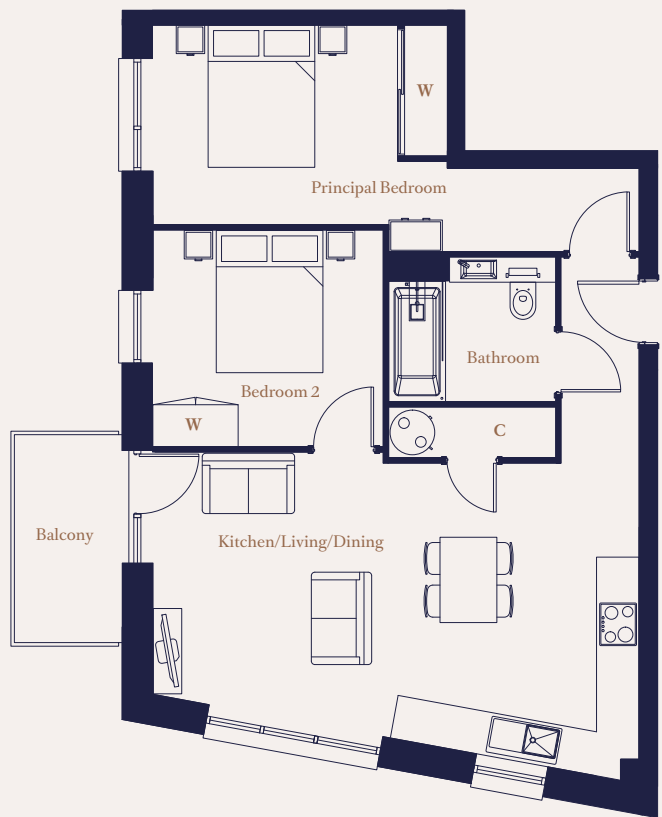
Level	Apartments
12	152
11	147
10	142
9	137
8	132
7	127
6	122
5	115
4	108
3	101
2	94
1	87
G	80
LG	



# THE HATTERS

REPTON HOUSE

2 Bedroom  
95, 102, 123, 128, 143, 148, 153



### Dimensions

Kitchen/Living/Dining	6.79m x 4.42m	22'4" x 14'6"
Principal Bedroom	6.81m x 2.77m	22'4" x 9'1"
Bedroom 2	3.22m x 3.15m	10'7" x 10'4"
Total Area	63.9 sq m	688 sq ft
Balcony	2.92m x 1.73m	9'7" x 5'8"

### Key

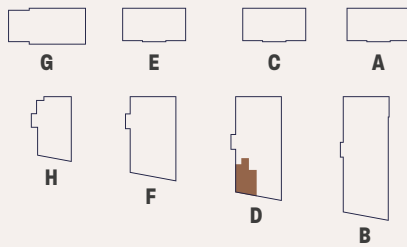
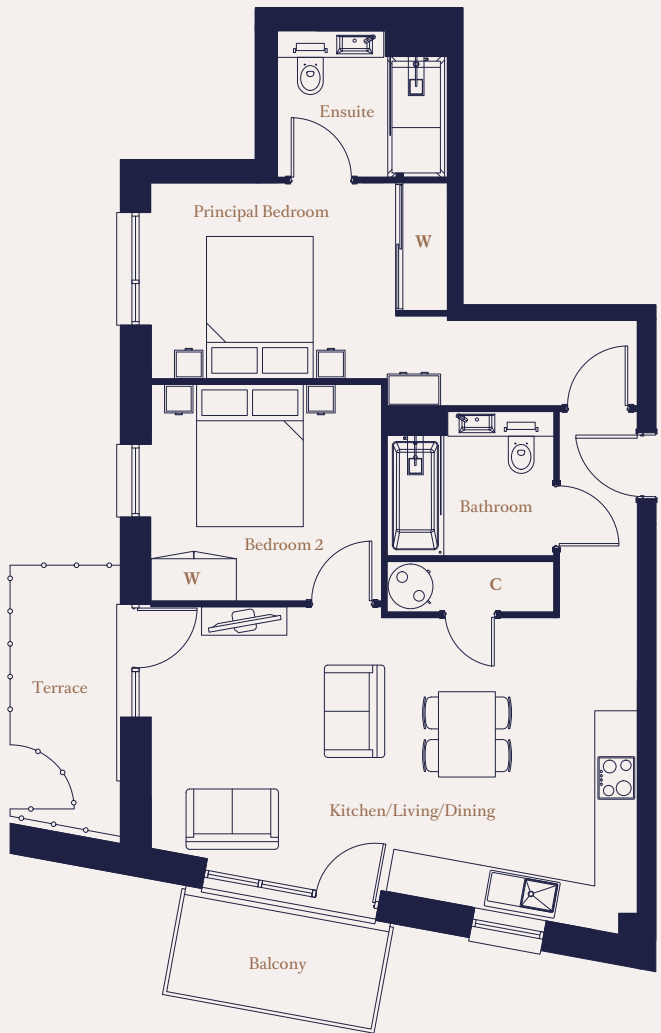
C	Cupboard
W	Wardrobe

Maximum dimensions are shown. They are intended as a guide only and are subject to change.  
Not all plans are to scale. Please speak to our sales executive for further information.

# THE CAXTON

REPTON HOUSE

2 Bedroom  
81



### Dimensions

Kitchen/Living/Dining	6.81m x 4.42m	22'4" x 14'6"
Principal Bedroom	6.81m x 2.75m	22'4" x 9'1"
Bedroom 2	3.21m x 3.05m	10'6" x 10'0"
Total Area	69.0 sq m	742 sq ft
Terrace	3.50m x 1.50m	12'9" x 4'11"
Balcony	2.92m x 1.73m	9'7" x 5'8"

### Key

C	Cupboard
W	Wardrobe

Maximum dimensions are shown. They are intended as a guide only and are subject to change.  
Not all plans are to scale. Please speak to our sales executive for further information.

### Floor Locator

Level	Apartments
12	
11	
10	
9	
8	
7	
6	
5	
4	
3	
2	
1	
G	81
LG	

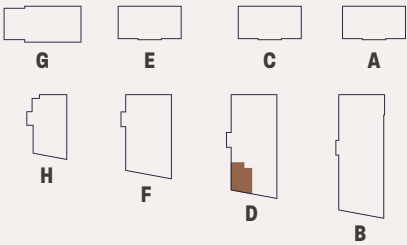
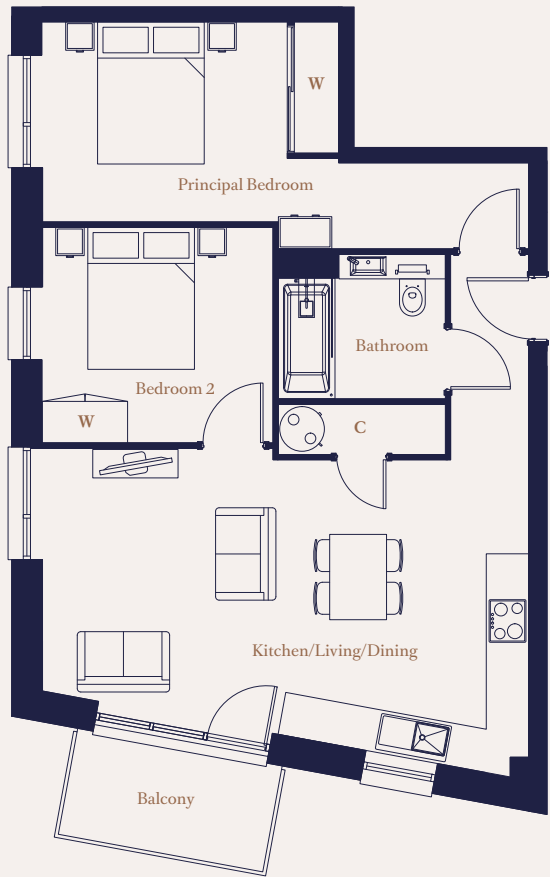




# THE FRANKLAND

REPTON HOUSE

2 Bedroom  
88, 109, 116, 133, 138



## Dimensions

Kitchen/Living/Dining	6.79m x 4.42m	22'4" x 14'6"
Principal Bedroom	6.81m x 2.77m	22'4" x 9'1"
Bedroom 2	3.22m x 3.04m	10'7" x 10'0"
<b>Total Area</b>	<b>63.8 sq m</b>	<b>687 sq ft</b>
Balcony	2.92m x 1.73m	9'7" x 5'8"

## Key

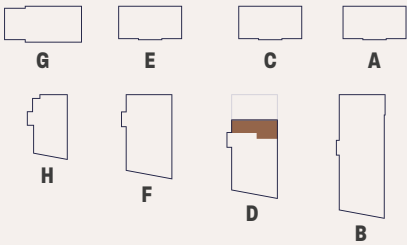
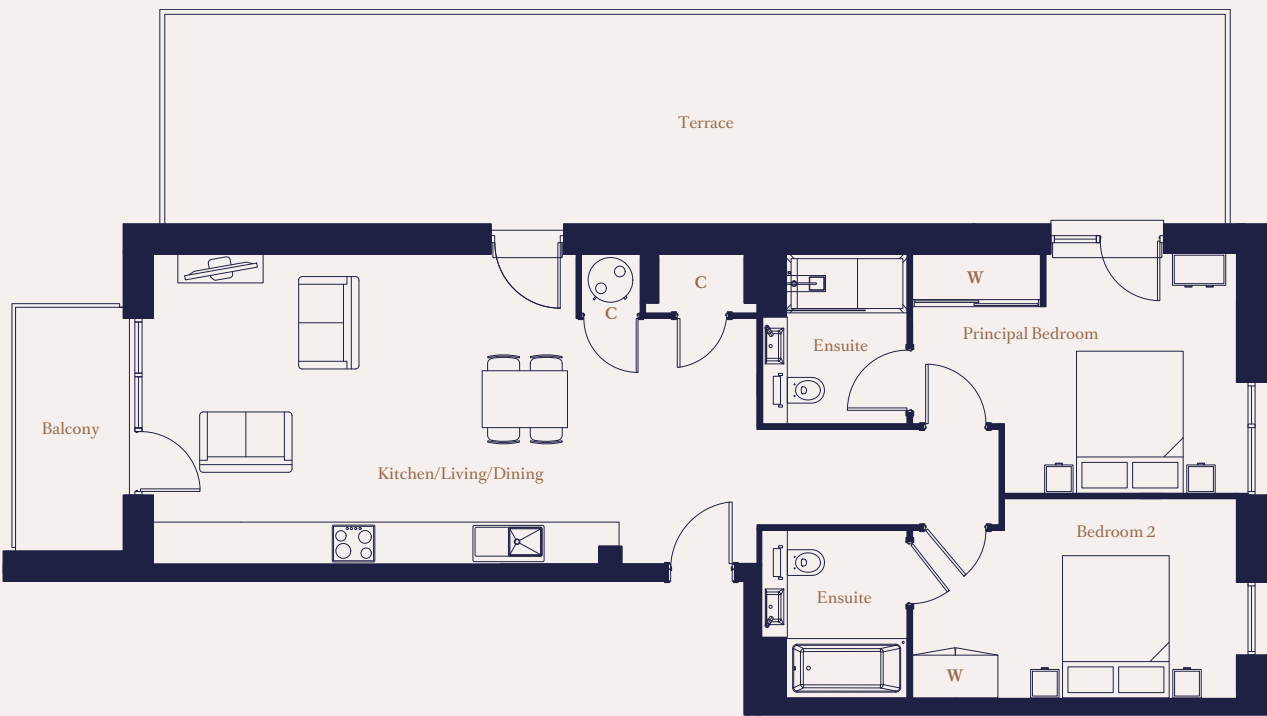
- C
- Cupboard
- W
- Wardrobe

Maximum dimensions are shown. They are intended as a guide only and are subject to change.  
Not all plans are to scale. Please speak to our sales executive for further information.

# THE HAZELWOOD

REPTON HOUSE

2 Bedroom  
125



## Dimensions

Kitchen/Living/Dining	8.45m x 4.30m	27'9" x 14'2"
Principal Bedroom	4.52m x 3.32m	14'10" x 10'11"
Bedroom 2	4.52m x 2.79m	14'10" x 9'2"
<b>Total Area</b>	<b>79.0 sq m</b>	<b>851 sq ft</b>
Terrace	14.92m x 2.94m	48'11" x 9'8"
Balcony	3.41m x 1.73m	11'2" x 5'8"

## Key

- C
- Cupboard
- W
- Wardrobe

Maximum dimensions are shown. They are intended as a guide only and are subject to change.  
Not all plans are to scale. Please speak to our sales executive for further information.

## Floor Locator

Level	Apartments
12	
11	
10	
9	
8	
7	125
6	
5	
4	
3	
2	
1	
G	
LG	

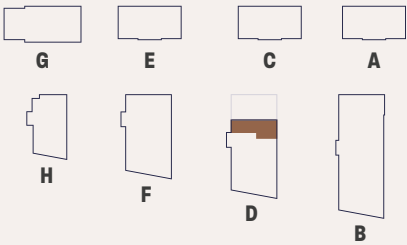
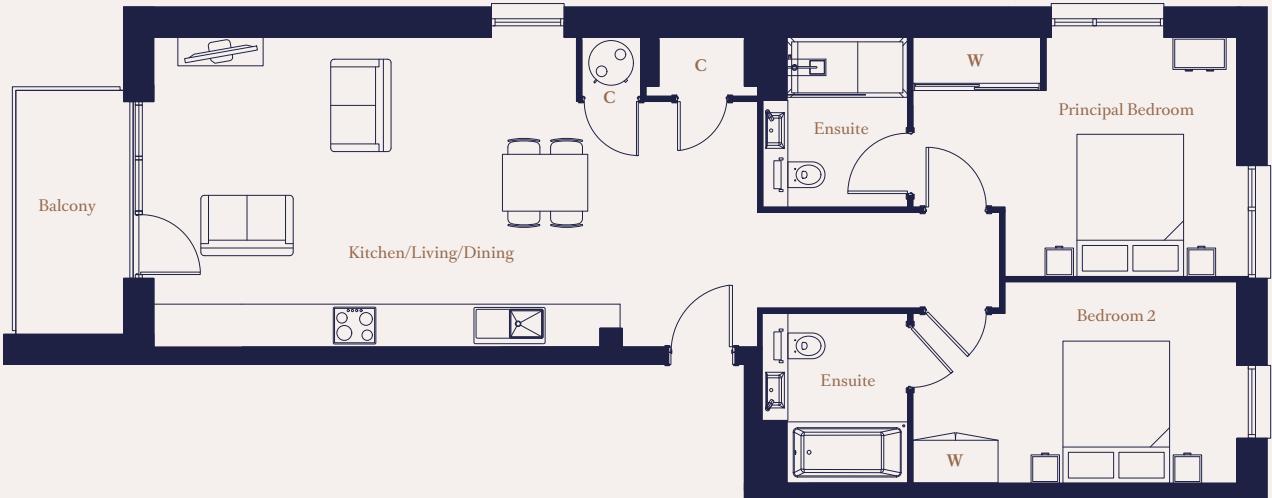




# THE CHERRY

REPTON HOUSE

2 Bedroom  
130, 135, 140, 145, 150



### Dimensions

Kitchen/Living/Dining	8.45m x 4.30m	27'9" x 14'2"
Principal Bedroom	4.52m x 3.32m	14'10" x 10'11"
Bedroom 2	4.52m x 2.79m	14'10" x 9'2"
<b>Total Area</b>	<b>79.0 sq m</b>	<b>850 sq ft</b>
Balcony	3.41m x 1.73m	11'2" x 5'8"

### Key

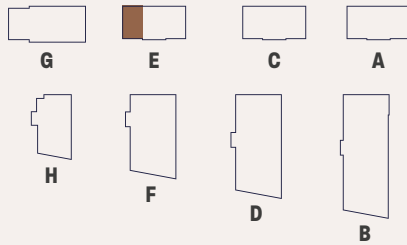
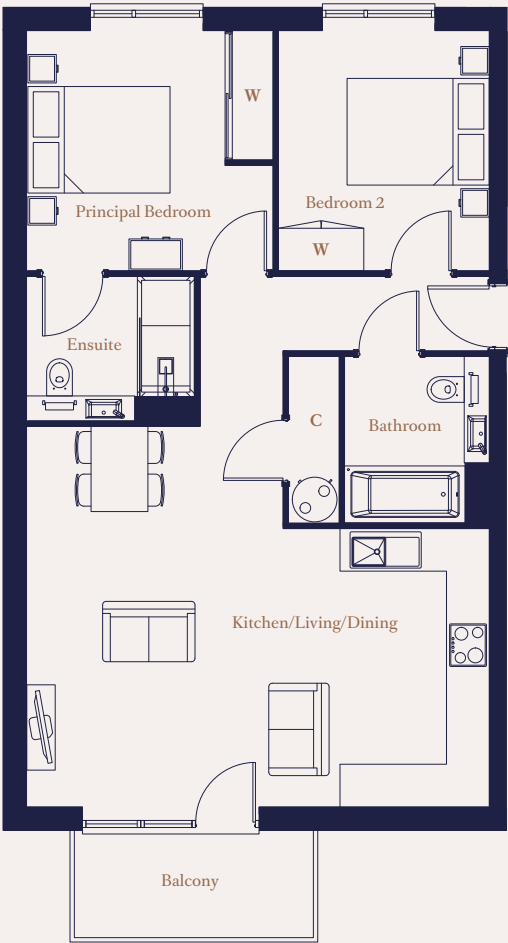
- C Cupboard
- W Wardrobe

Maximum dimensions are shown. They are intended as a guide only and are subject to change.  
Not all plans are to scale. Please speak to our sales executive for further information.

# THE SPRINGFIELD

COOKE HOUSE

2 Bedroom  
156, 158\*, 159, 161\*, 162, 164\*



### Dimensions

Kitchen/Living/Dining	6.49m x 5.33m	21'4" x 17'6"
Principal Bedroom	3.45m x 3.36m	11'4" x 11'0"
Bedroom 2	3.36m x 2.96m	11'0" x 9'9"
<b>Total Area</b>	<b>71.8 sq m</b>	<b>773 sq ft</b>
Balcony	3.34m x 1.40m	10'11" x 4'7"

### Key

- C Cupboard
- W Wardrobe

\* Handed plots

Maximum dimensions are shown. They are intended as a guide only and are subject to change.  
Not all plans are to scale. Please speak to our sales executive for further information.

### Floor Locator

Level	Apartments
12	
11	
10	
9	
8	
7	
6	
5	
4	
3	162, 164
2	159, 161
1	156, 158
G	
LG	

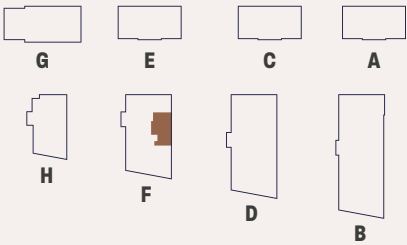
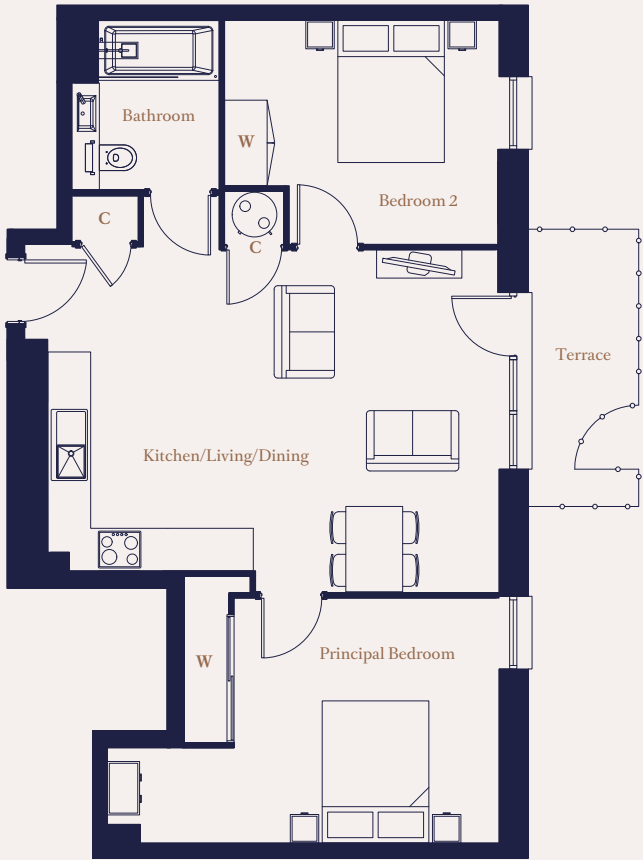




# THE OAKLEIGH

## MAY HOUSE

2 Bedroom  
166



### Dimensions

Kitchen/Living/Dining	6.26m x 4.82m	20'6" x 15'10"
Principal Bedroom	3.67m x 3.29m	12'1" x 10'10"
Bedroom 2	3.81m x 3.11m	12'6" x 10'3"
<b>Total Area</b>	<b>66.4 sq m</b>	<b>715 sq ft</b>
Terrace	3.80m x 1.50m	21'3" x 4'11"

### Key

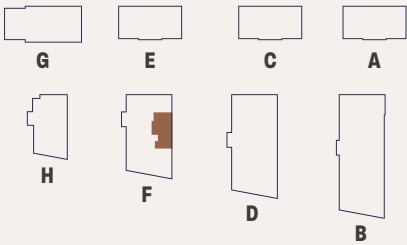
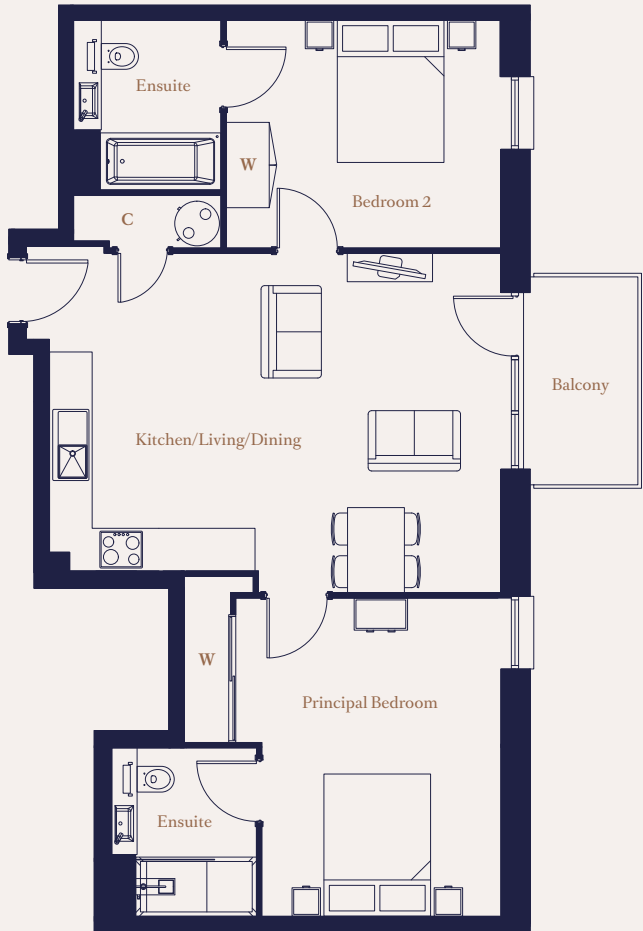
- C Cupboard
- W Wardrobe

Maximum dimensions are shown. They are intended as a guide only and are subject to change.  
Not all plans are to scale. Please speak to our sales executive for further information.

# THE MAYFARE

## MAY HOUSE

2 Bedroom  
172, 177, 182, 187, 192, 197,  
201, 205, 209, 213



### Dimensions

Kitchen/Living/Dining	6.26m x 4.78m	20'6" x 15'8"
Principal Bedroom	4.43m x 4.37m	14'7" x 14'4"
Bedroom 2	3.81m x 3.17m	12'6" x 10'5"
<b>Total Area</b>	<b>72.1 sq m</b>	<b>776 sq ft</b>
Balcony	2.92m x 1.73m	9'7" x 5'8"

### Key

- C Cupboard
- W Wardrobe

Maximum dimensions are shown. They are intended as a guide only and are subject to change.  
Not all plans are to scale. Please speak to our sales executive for further information.

### Floor Locator

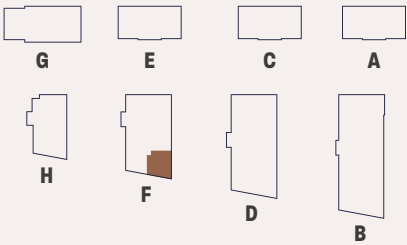
Level	Apartments
12	
11	
10	213
9	209
8	205
7	201
6	197
5	192
4	187
3	182
2	177
1	172
G	
LG	



# THE WARWICK

MAY HOUSE

2 Bedroom  
167



### Dimensions

Kitchen/Living/Dining	5.64m x 4.92m	18'6" x 16'2"
Principal Bedroom	4.39m x 3.03m	14'5" x 12'7"
Bedroom 2	3.71m x 3.25m	12'2" x 10'8"
<b>Total Area</b>	<b>65.0 sq m</b>	<b>700 sq ft</b>
Balcony	3.52m x 1.73m	11'6" x 5'8"

### Key

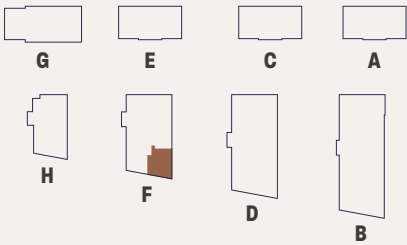
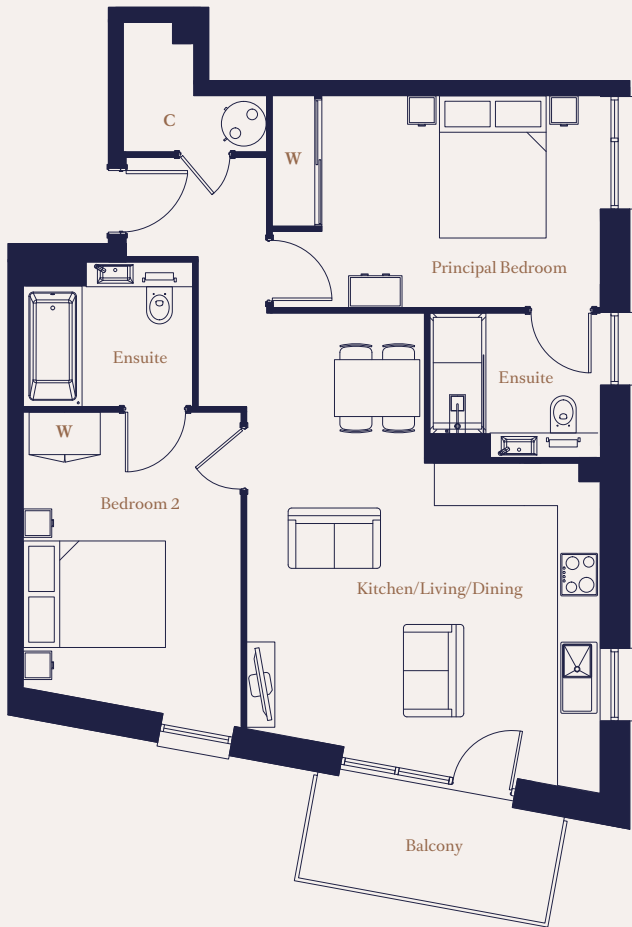
- C Cupboard
- W Wardrobe

Maximum dimensions are shown. They are intended as a guide only and are subject to change.  
Not all plans are to scale. Please speak to our sales executive for further information.

# THE CLAREMONT

MAY HOUSE

2 Bedroom  
173, 178, 183, 188, 193, 198,  
202, 206, 210, 214



### Dimensions

Kitchen/Living/Dining	5.79m x 4.92m	19'0" x 16'2"
Principal Bedroom	4.56m x 2.94m	15'0" x 9'8"
Bedroom 2	3.83m x 3.03m	12'7" x 9'11"
<b>Total Area</b>	<b>71.2 sq m</b>	<b>767 sq ft</b>
Balcony	3.52m x 1.73m	11'6" x 5'8"

### Key

- C Cupboard
- W Wardrobe

Maximum dimensions are shown. They are intended as a guide only and are subject to change.  
Not all plans are to scale. Please speak to our sales executive for further information.

### Floor Locator

Level	Apartments
12	
11	
10	214
9	210
8	206
7	202
6	198
5	193
4	188
3	183
2	178
1	173
G	
LG	

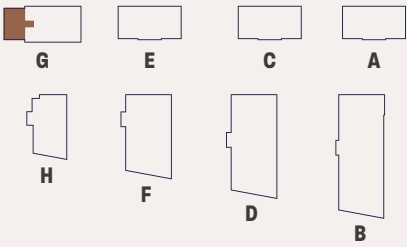
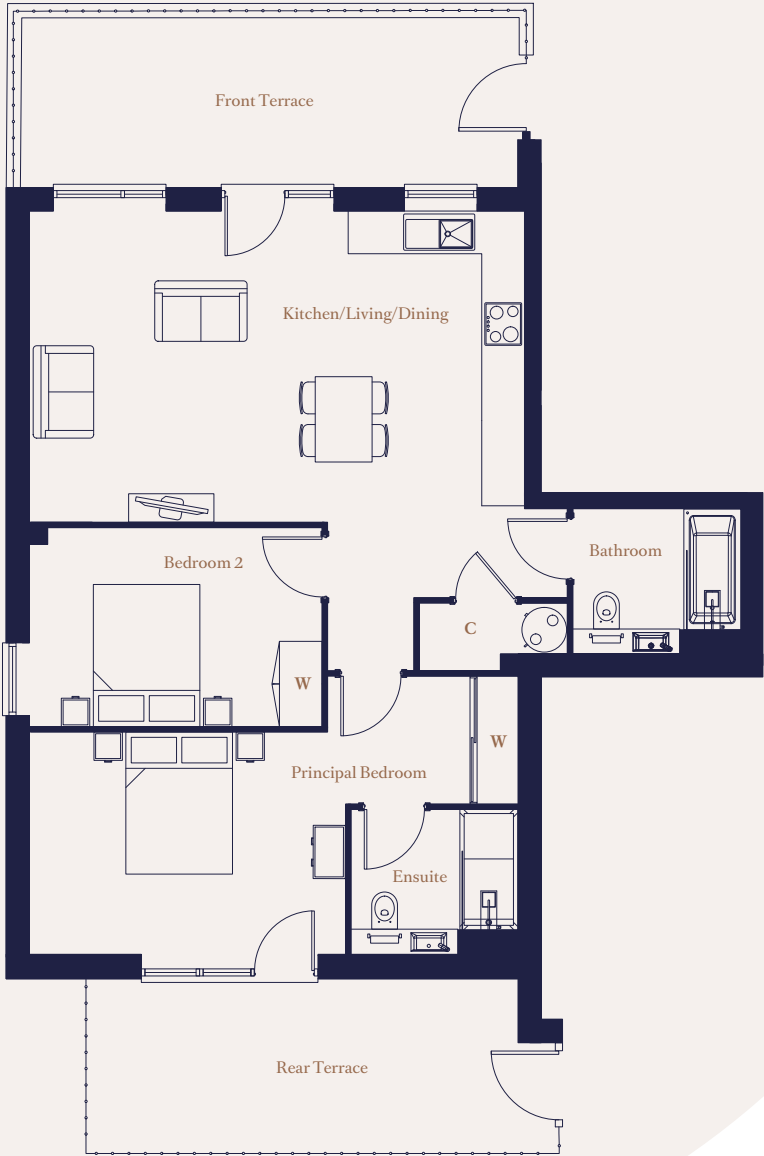




# THE CASSIO

CAPELL HOUSE

2 Bedroom  
216



### Dimensions

Kitchen/Living/Dining	6.94m x 5.42m	22'9" x 17'9"
Principal Bedroom	6.85m x 3.12m	22'6" x 10'3"
Bedroom 2	4.10m x 2.80m	13'5" x 9'2"
<b>Total Area</b>	<b>79.8 sq m</b>	<b>859 sq ft</b>
Front Terrace	6.98m x 2.37m	22'11" x 7'9"
Rear Terrace	6.10m x 2.45m	20'0" x 8'0"

### Key

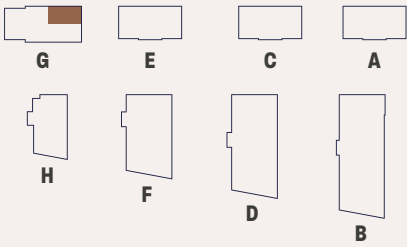
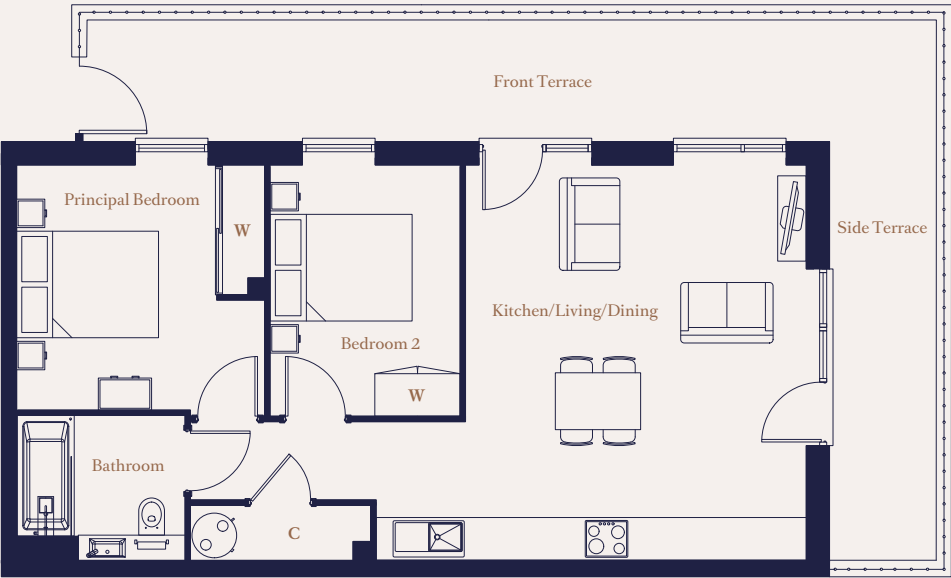
C	Cupboard
W	Wardrobe

Maximum dimensions are shown. They are intended as a guide only and are subject to change.  
Not all plans are to scale. Please speak to our sales executive for further information.

# THE OAKLANDS

CAPELL HOUSE

2 Bedroom  
217



### Dimensions

Kitchen/Living/Dining	6.02m x 5.53m	19'9" x 18'2"
Principal Bedroom	3.47m x 3.42m	11'5" x 11'3"
Bedroom 2	3.51m x 2.67m	11'6" x 8'9"
<b>Total Area</b>	<b>62.8 sq m</b>	<b>676 sq ft</b>
Front Terrace	12.00m x 1.70m	39'4" x 5'6"
Side Terrace	7.71m x 1.50m	25'3" x 4'11"

### Key

C	Cupboard
W	Wardrobe

Maximum dimensions are shown. They are intended as a guide only and are subject to change.  
Not all plans are to scale. Please speak to our sales executive for further information.

### Floor Locator

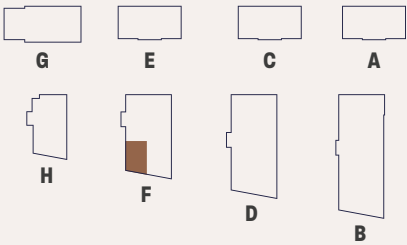
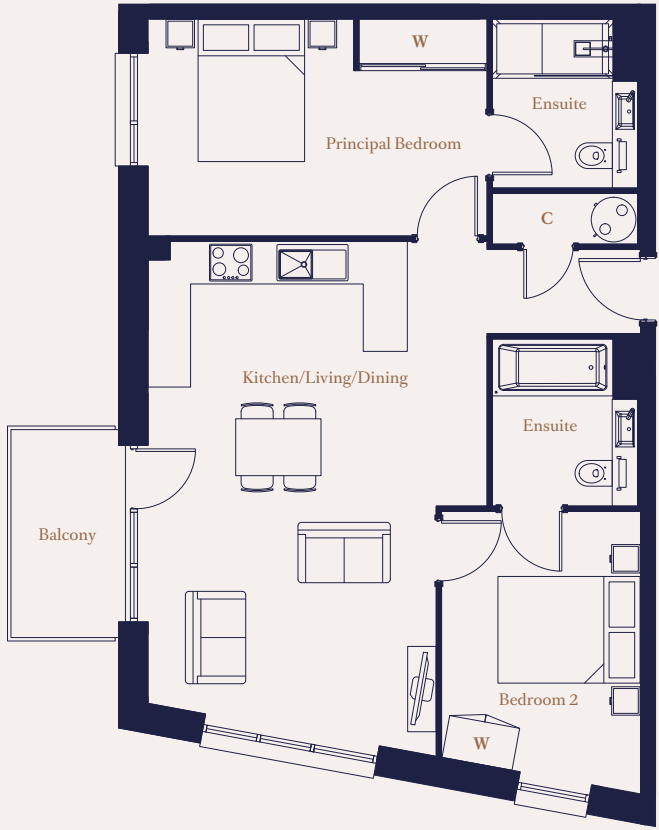
Level	Apartments
12	
11	
10	
9	
8	
7	
6	
5	
4	
3	
2	
1	
G	217
LG	



# THE ELMCOTE

MAY HOUSE

2 Bedroom  
174, 179, 184, 189, 194, 199,  
203, 207, 211, 215



## Dimensions

Kitchen/Living/Dining	6.46m x 4.71m	21'2" x 15'6"
Principal Bedroom	4.71m x 3.01m	15'6" x 9'11"
Bedroom 2	4.01m x 2.75m	13'2" x 9'0"
Total Area	70.9 sq m	764 sq ft
Balcony	2.92m x 1.73m	9'7" x 5'8"

## Key

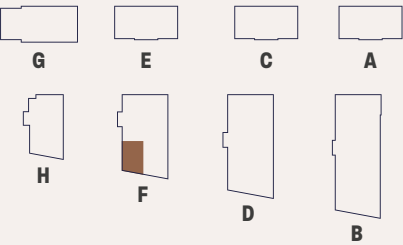
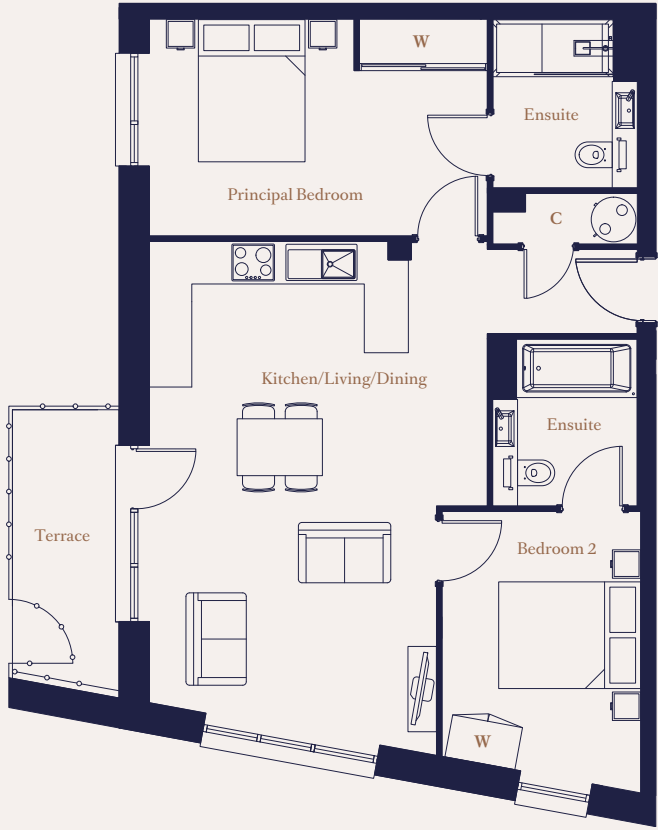
- C Cupboard
- W Wardrobe

Maximum dimensions are shown. They are intended as a guide only and are subject to change.  
Not all plans are to scale. Please speak to our sales executive for further information.

# THE LINDEN

MAY HOUSE

2 Bedroom  
168



## Dimensions

Kitchen/Living/Dining	6.46m x 4.71m	21'2" x 15'6"
Principal Bedroom	4.71m x 3.01m	15'6" x 9'11"
Bedroom 2	4.01m x 2.75m	13'2" x 9'0"
Total Area	71.0 sq m	764 sq ft
Terrace	3.78m x 1.50m	14'1" x 4'11"

## Key

- C Cupboard
- W Wardrobe

Maximum dimensions are shown. They are intended as a guide only and are subject to change.  
Not all plans are to scale. Please speak to our sales executive for further information.

## Floor Locator

Level	Apartments
12	
11	
10	
9	
8	
7	
6	
5	
4	
3	
2	
1	
G	168
LG	

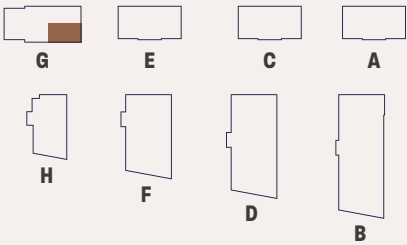
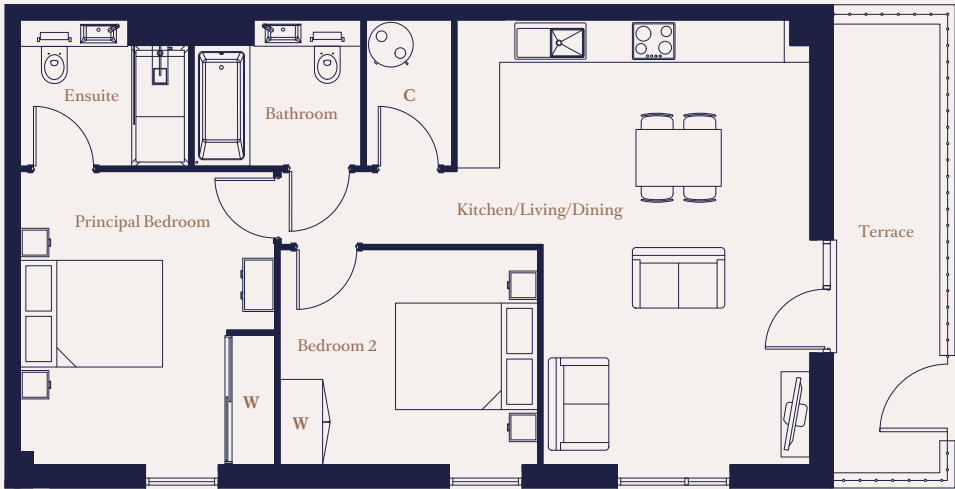




# THE FULLERIAN

CAPELL HOUSE

2 Bedroom  
218



## Dimensions

Kitchen/Living/Dining	6.21m x 4.94m	20'5" x 16'3"
Principal Bedroom	4.10m x 3.56m	13'6" x 11'8"
Bedroom 2	3.62m x 3.05m	11'11" x 9'10"
Total Area	69.8 sq m	752 sq ft
Terrace	6.47m x 1.50m	21'2" x 4'11"

## Key

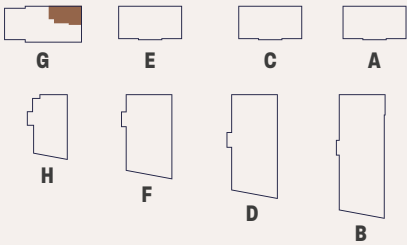
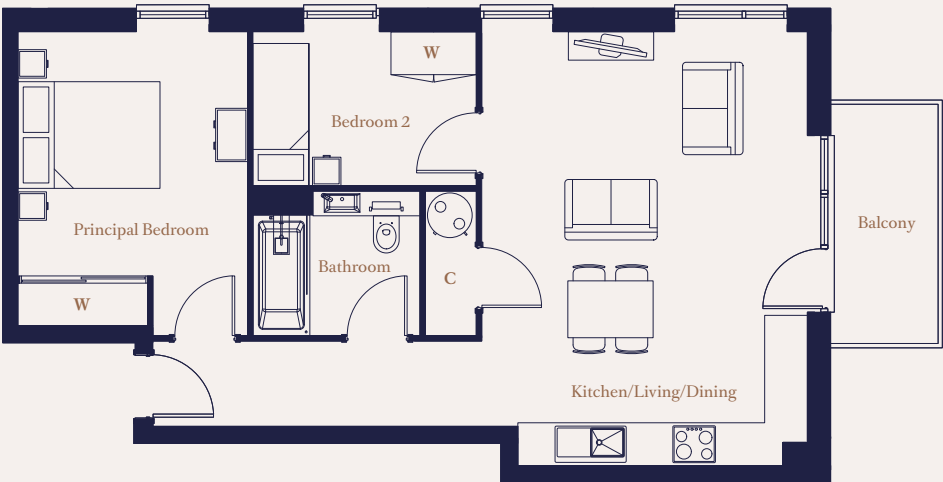
- C Cupboard
- W Wardrobe

Maximum dimensions are shown. They are intended as a guide only and are subject to change. Not all plans are to scale. Please speak to our sales executive for further information.

# THE DURBAN

CAPELL HOUSE

2 Bedroom  
222, 226, 229



## Dimensions

Kitchen/Living/Dining	4.56m x 6.08m	15'0" x 19'11"
Principal Bedroom	4.11m x 3.20m	13'6" x 10'6"
Bedroom 2	3.14m x 2.14m	10'4" x 7'11"
Total Area	62.2 sq m	670 sq ft
Balcony	3.34m x 1.40m	10'11" x 4'7"

## Key

- C Cupboard
- W Wardrobe

Maximum dimensions are shown. They are intended as a guide only and are subject to change. Not all plans are to scale. Please speak to our sales executive for further information.



## Floor Locator

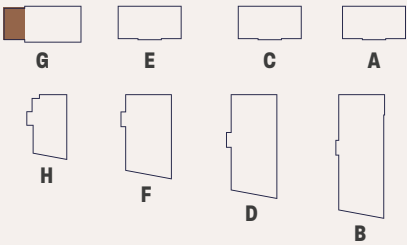
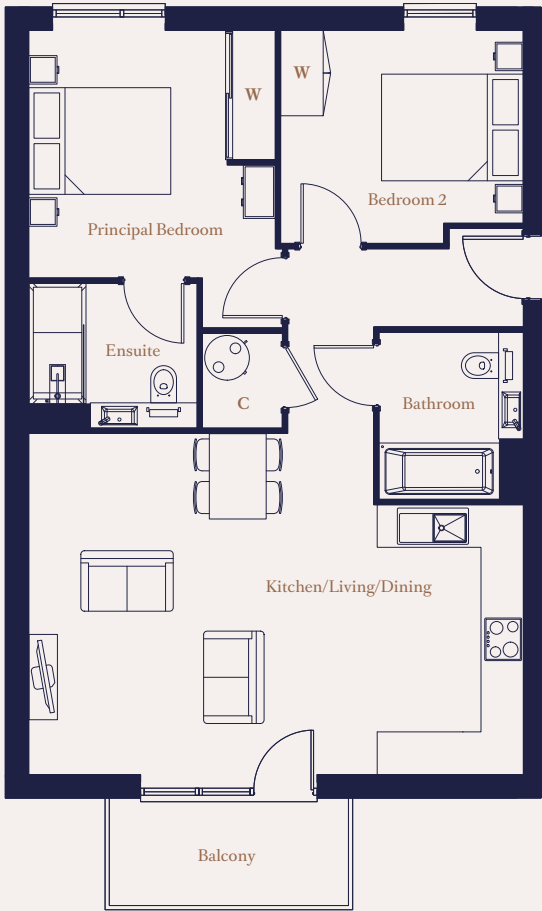
Level	Apartments
12	
11	
10	
9	
8	
7	
6	
5	
4	
3	229
2	226
1	222
G	
LG	



# THE FEARNLEY

CAPELL HOUSE

2 Bedroom  
219, 223



## Dimensions

Kitchen/Living/Dining	6.94m x 4.78m	22'9" x 15'8"
Principal Bedroom	3.45m x 3.36m	11'4" x 11'0"
Bedroom 2	3.42m x 2.97m	11'3" x 9'9"
Total Area	73.5 sq m	791 sq ft
Balcony	3.34m x 1.40m	10'11" x 4'7"

## Key

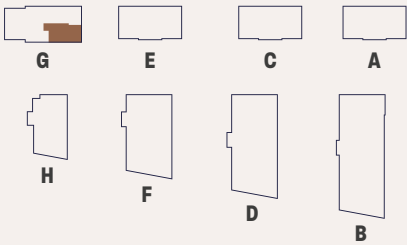
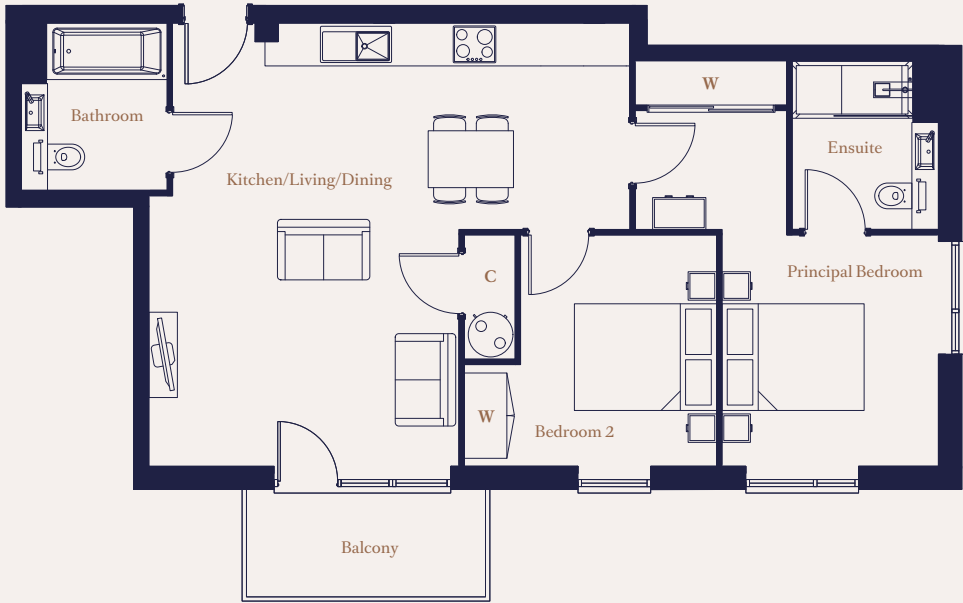
- C Cupboard
- W Wardrobe

Maximum dimensions are shown. They are intended as a guide only and are subject to change.  
Not all plans are to scale. Please speak to our sales executive for further information.

# THE MARLBOROUGH

CAPELL HOUSE

2 Bedroom  
221, 225, 228



## Dimensions

Kitchen/Living/Dining	6.43m x 6.20m	21'1" x 20'4"
Principal Bedroom	5.65m x 3.02m	18'7" x 9'11"
Bedroom 2	3.55m x 3.23m	11'8" x 10'7"
Total Area	71.9 sq m	670 sq ft
Balcony	3.34m x 1.40m	10'11" x 4'7"

## Key

- C Cupboard
- W Wardrobe

Maximum dimensions are shown. They are intended as a guide only and are subject to change.  
Not all plans are to scale. Please speak to our sales executive for further information.

## Floor Locator

Level	Apartments
12	
11	
10	
9	
8	
7	
6	
5	
4	
3	228
2	225
1	221
G	
LG	

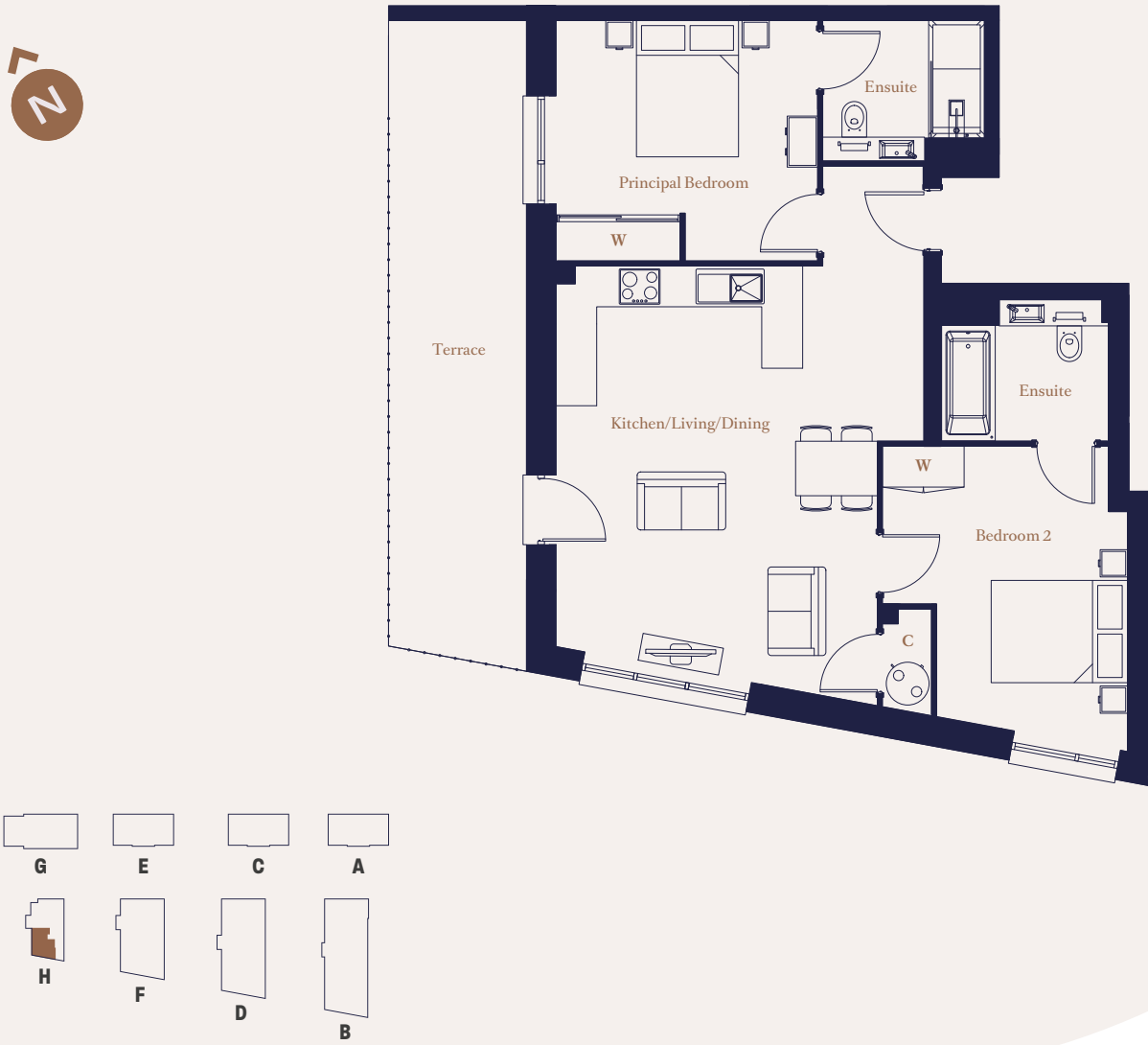




# THE HILLCROFT

VERRIO HOUSE

2 Bedroom  
230



Dimensions

Kitchen/Living/Dining	5.57m x 4.69m	18'3" x 15'5"
Principal Bedroom	3.82m x 3.50m	12'6" x 11'6"
Bedroom 2	4.45m x 3.58m	14'8" x 11'9"
Total Area	72.3 sq m	778 sq ft
Terrace	8.96m x 2.02m	25'3" x 6'7"

Key

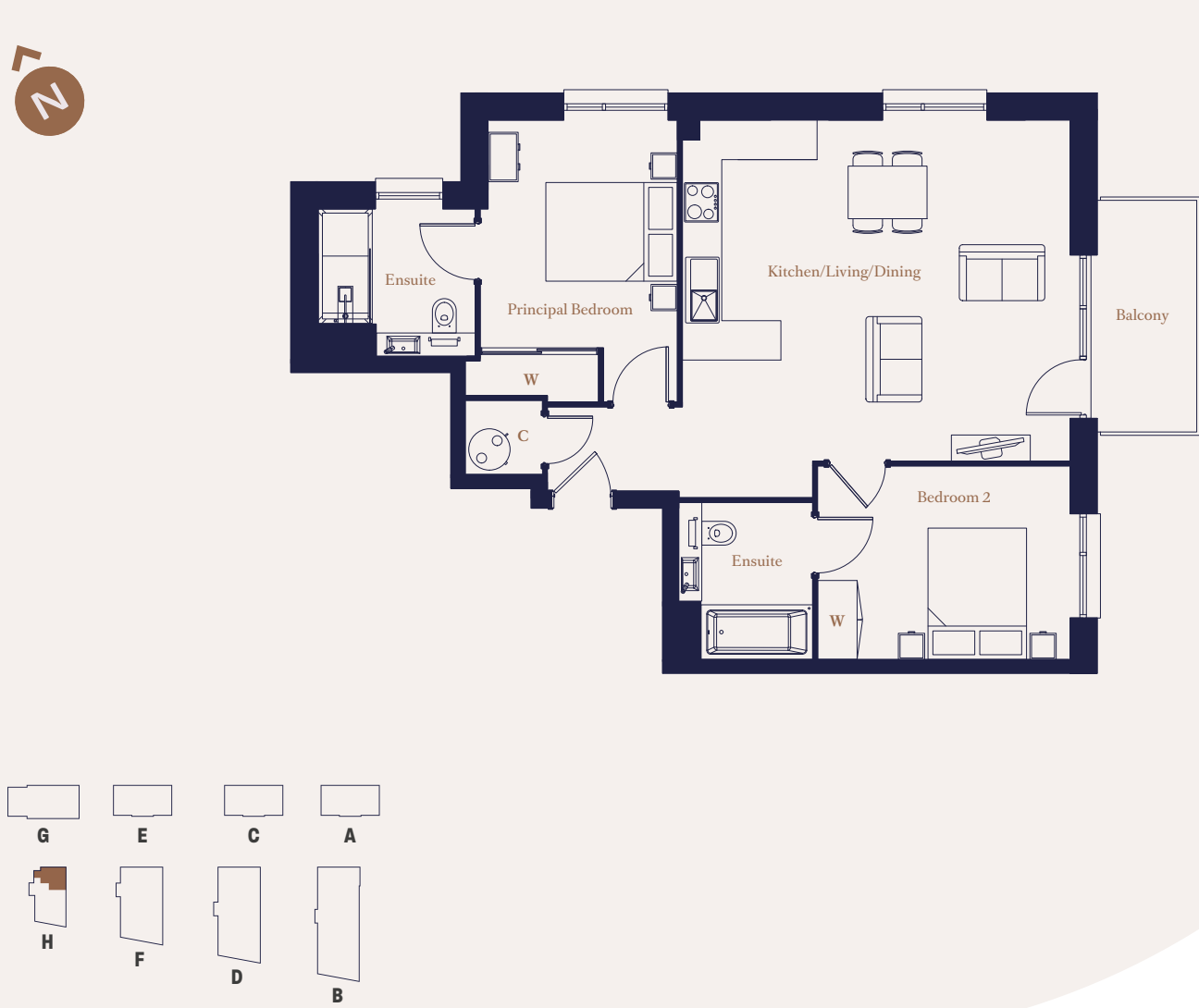
- C Cupboard
- W Wardrobe

Maximum dimensions are shown. They are intended as a guide only and are subject to change.  
Not all plans are to scale. Please speak to our sales executive for further information.

# THE VIVIAN

VERRIO HOUSE

2 Bedroom  
231, 234, 237, 240, 243, 246



Dimensions

Kitchen/Living/Dining	5.84m x 5.13m	19'2" x 16'10"
Principal Bedroom	4.23m x 3.00m	13'11" x 9'10"
Bedroom 2	3.78m x 2.90m	12'5" x 9'6"
Total Area	71.4 sq m	769 sq ft
Balcony	3.52m x 1.73m	11'6" x 5'8"

Key

- C Cupboard
- W Wardrobe

Maximum dimensions are shown. They are intended as a guide only and are subject to change.  
Not all plans are to scale. Please speak to our sales executive for further information.

Floor Locator

Level	Apartments
12	
11	
10	
9	
8	
7	
6	
5	246
4	243
3	240
2	237
1	234
G	231
LG	



# THE LAVROCK

VERRIO HOUSE

2 Bedroom  
233, 236, 239, 242, 245, 248



### Dimensions

Kitchen/Living/Dining	5.61m x 4.41m	18'5" x 14'6"
Principal Bedroom	5.20m x 3.17m	17'1" x 10'5"
Bedroom 2	3.43m x 2.99m	11'3" x 9'10"
<b>Total Area</b>	<b>73.8 sq m</b>	<b>795 sq ft</b>
Balcony 1	4.62m x 1.73m	15'1" x 5'8"
Balcony 2	3.52m x 1.73m	11'6" x 5'8"

### Key

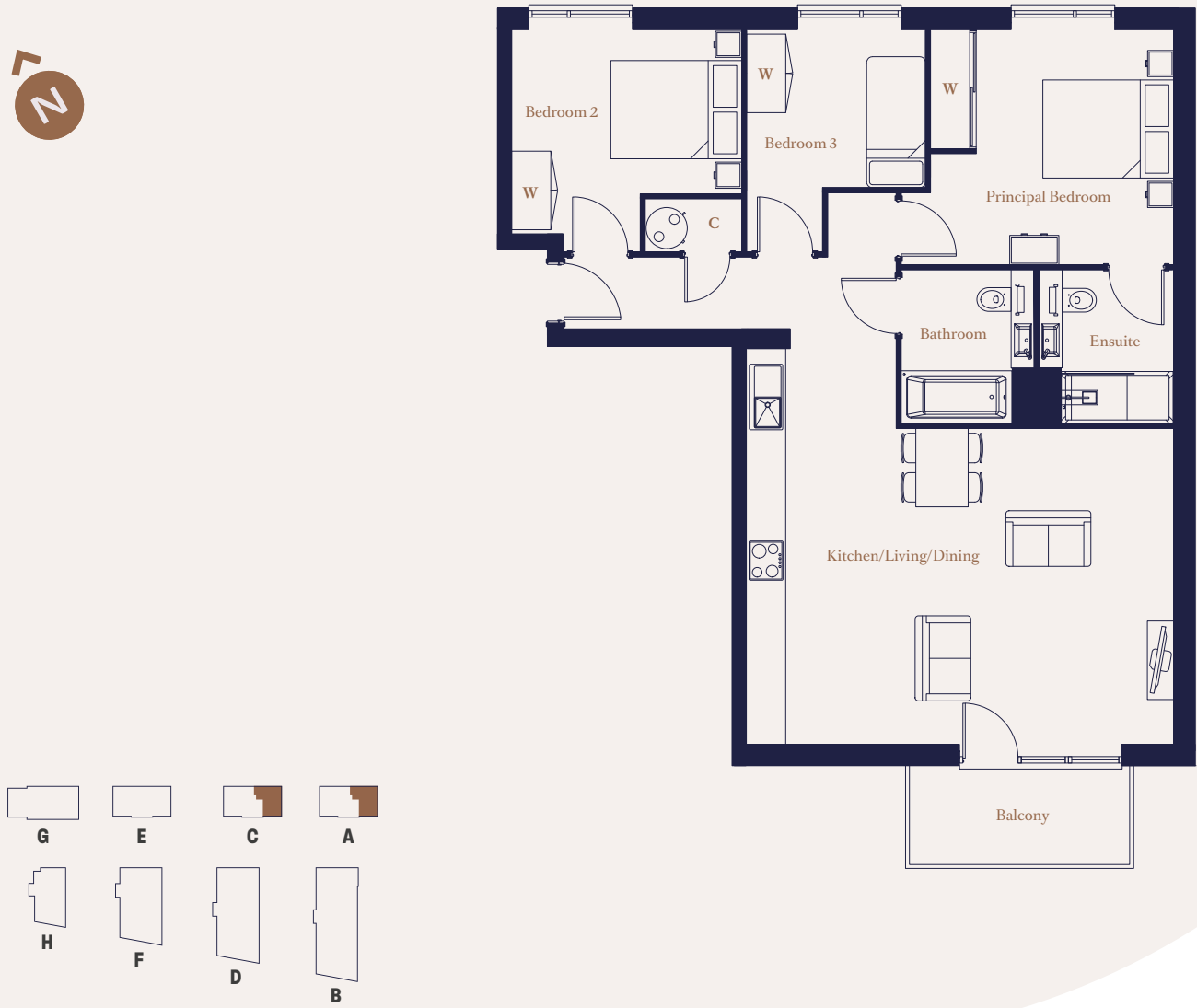
- C Cupboard
- W Wardrobe

Maximum dimensions are shown. They are intended as a guide only and are subject to change. Not all plans are to scale. Please speak to our sales executive for further information.

# THE REMBRANDT

GIBBONS HOUSE, BRIDGEMAN HOUSE

3 Bedroom  
5, 8, 73, 76



### Dimensions

Kitchen/Living/Dining	6.49m x 4.80m	21'4" x 15'9"
Principal Bedroom	3.71m x 3.57m	12'2" x 11'9"
Bedroom 2	3.49m x 3.38m	11'5" x 11'1"
Bedroom 3	3.38m x 2.73m	11'1" x 9'0"
<b>Total Area</b>	<b>87.3 sq m</b>	<b>939 sq ft</b>
Balcony	3.34m x 1.40m	10'11" x 4'7"

### Key

- C Cupboard
- W Wardrobe

Maximum dimensions are shown. They are intended as a guide only and are subject to change. Not all plans are to scale. Please speak to our sales executive for further information.

### Floor Locator

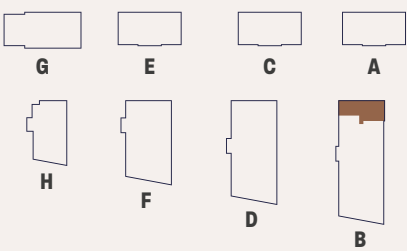
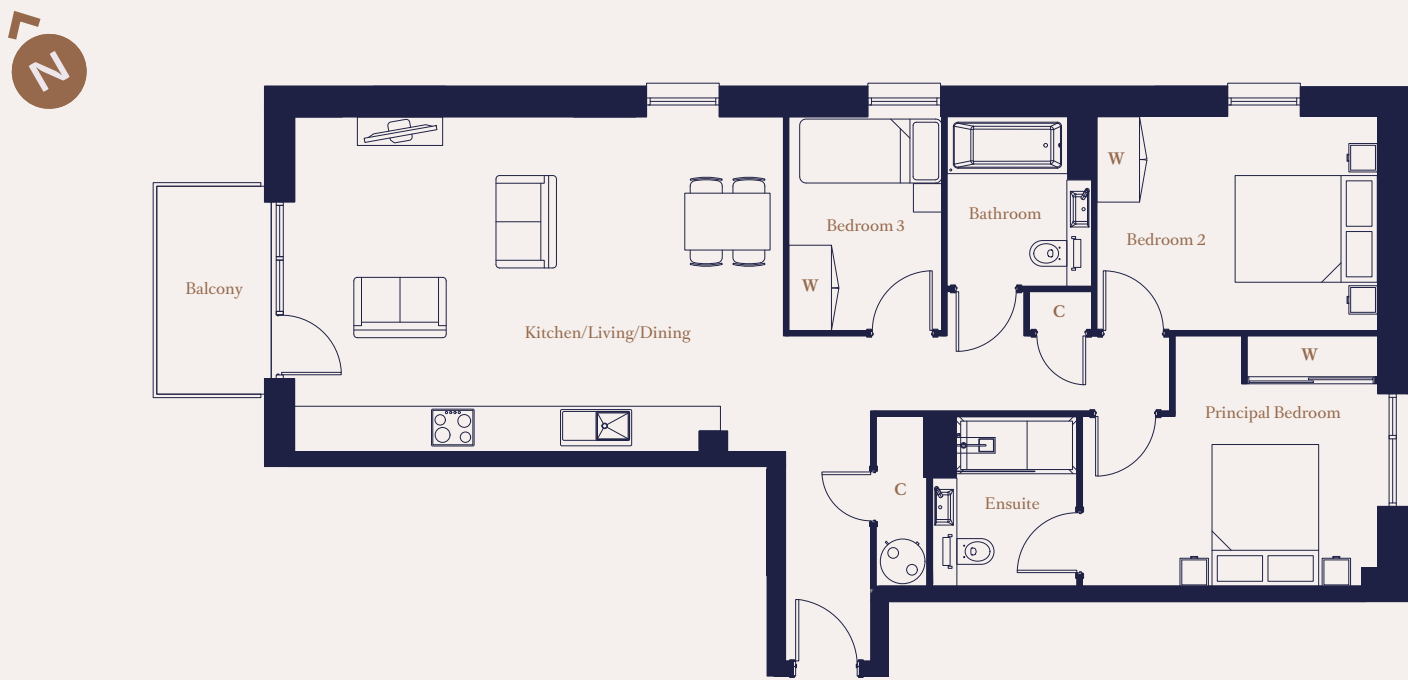
Level	Apartments
12	
11	
10	
9	
8	
7	
6	
5	
4	
3	
2	8 (A), 76 (C)
1	5 (A), 73 (C)
G	
LG	



# THE HARWOODS

WYATT HOUSE

3 Bedroom  
35, 42



## Dimensions

Kitchen/Living/Dining	6.83m x 4.63m	22'5" x 15'3"
Principal Bedroom	4.12m x 3.49m	13'6" x 11'6"
Bedroom 2	3.91m x 2.97m	12'10" x 9'9"
Bedroom 3	2.97m x 2.15m	9'9" x 7'1"
Total Area	88.6 sq m	954 sq ft
Balcony	2.92m x 1.73m	9'7" x 5'8"

## Key

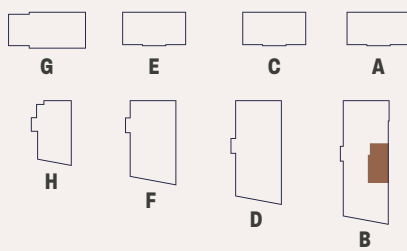
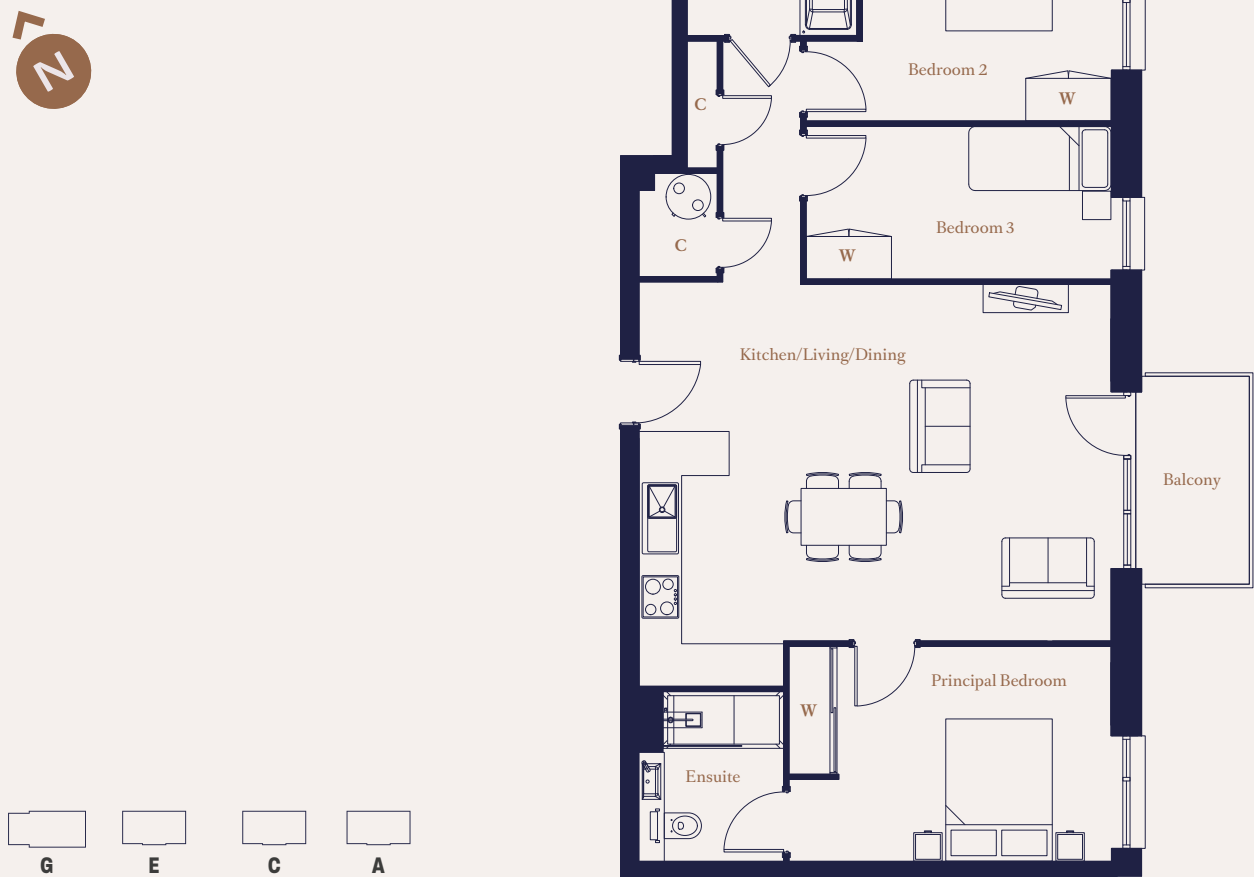
- C
- Cupboard
- W
- Wardrobe

Maximum dimensions are shown. They are intended as a guide only and are subject to change.  
Not all plans are to scale. Please speak to our sales executive for further information.

# THE KELMSCOTT

WYATT HOUSE

3 Bedroom  
37, 44, 49, 53, 57, 61, 65



## Dimensions

Kitchen/Living/Dining	6.60m x 5.05m	21'8" x 16'7"
Principal Bedroom	4.49m x 2.98m	14'9" x 9'10"
Bedroom 2	3.46m x 3.23m	11'5" x 10'7"
Bedroom 3	4.25m x 2.11m	14'0" x 6'11"
Total Area	88.4 sq m	952 sq ft
Balcony	2.92m x 1.73m	9'7" x 5'8"

## Key

- C
- Cupboard
- W
- Wardrobe

Maximum dimensions are shown. They are intended as a guide only and are subject to change.  
Not all plans are to scale. Please speak to our sales executive for further information.



## Floor Locator

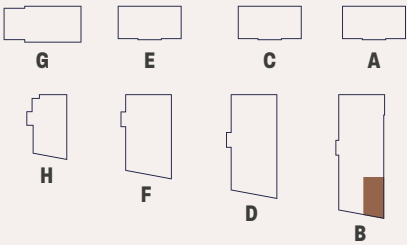
Level	Apartments
12	
11	
10	65
9	61
8	57
7	53
6	49
5	44
4	37
3	
2	
1	
G	
LG	



# THE ROSE

WYATT HOUSE

3 Bedroom  
38, 45, 50, 54, 58, 62, 66



Dimensions

Kitchen	4.86m x 2.18m	15'11" x 10'5"
Living/Dining	6.62m x 4.37m	21'9" x 14'4"
Principal Bedroom	4.49m x 2.71m	14'9" x 8'11"
Bedroom 2	3.35m x 3.20m	11'0" x 10'6"
Bedroom 3	3.11m x 2.16m	10'3" x 8'11"
Total Area	88.0 sq m	948 sq ft
Balcony	2.92m x 1.73m	9'7" x 5'8"

Key

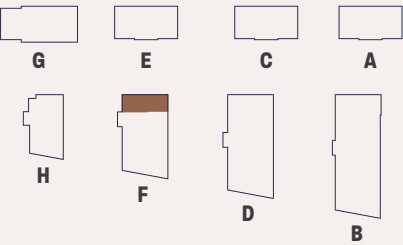
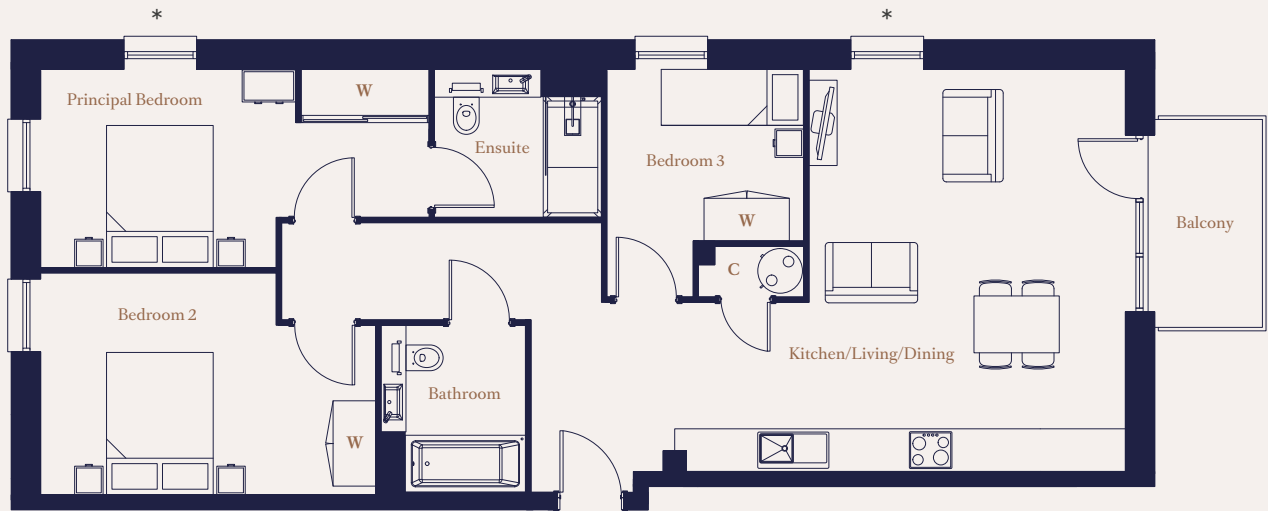
- C
- Cupboard
- W
- Wardrobe

Maximum dimensions are shown. They are intended as a guide only and are subject to change.  
Not all plans are to scale. Please speak to our sales executive for further information.

# THE MALKIN

MAY HOUSE

3 Bedroom  
165\*, 171, 176, 181, 186, 191, 196



Dimensions

Kitchen/Living/Dining	6.29m x 5.57m	20'8" x 18'3"
Principal Bedroom	5.41m x 2.74m	17'9" x 9'0"
Bedroom 2	4.66m x 3.08m	15'4" x 10'1"
Bedroom 3	3.15m x 2.77m	10'4" x 9'1"
Total Area	88.6 sq m	954 sq ft
Balcony	2.92m x 1.73m	9'7" x 5'8"

Key

- C
- Cupboard
- W
- Wardrobe

\* Apartment 165 has these windows omitted

Maximum dimensions are shown. They are intended as a guide only and are subject to change.  
Not all plans are to scale. Please speak to our sales executive for further information.

Floor Locator

Level	Apartments
12	
11	
10	
9	
8	
7	
6	196
5	191
4	186
3	181
2	176
1	171
G	165
LG	





# ABOUT WESTON HOMES

## Built with Passion, Delivered with Pride

Weston Homes was formed in 1987 by Bob Weston, establishing what has now become one of the major property developers in the South East of England.

Weston Homes has established a reputation for high quality design and build standards, delivered with a passionate desire to make a genuine difference to the lives of our customers and to leave a legacy of which we are justly proud.

Continually re-assessing the marketplace, Weston Homes has combined the traditional skills of house-building with the ever-expanding opportunities created by new technology. The company has taken a revolutionary approach to property development – many of our properties’ components are now pre-manufactured and tested in our own carefully controlled Weston-run factory rather than on site. This enables the efficient fitting at a late stage of construction of fixtures such as kitchen worktops, wardrobes and bathroom vanity units which incorporate bespoke basins, storage cabinets and associated plumbing. This minimises wasted materials whilst maximising the quality of your brand new home.



Weston Homes provides properties to exceed the expectations of purchasers both in terms of quality and value for money. Projects are hugely varied, ranging from select housing developments to large-scale city apartment complexes of many hundreds of homes.

As well as new-build, the company has extensive experience of refurbishment and restoration work, breathing new life into historic and Listed buildings to give new purpose to Britain’s architectural heritage.

**Weston Homes Plc**  
Weston Group Business Centre  
Parsonage Road  
Takeley, Essex  
CM22 6PU





Photograph is indicative only and shows an interior layout from a similar development.



**The Laundry Works**  
Sydney Road, Watford, WD18 7PL  
weston-homes.com | 01923 962357

**Disclaimer**

These particulars are set out as a general outline only for the guidance of intending purchasers or lessees and do not constitute, nor constitute part of, an offer or contract.

All descriptions, dimensions, references to condition and necessary permissions for use and occupation, and other details are given without responsibilities and any intending purchasers or tenants should not rely on them as statements or representations of fact but must satisfy themselves by inspection or otherwise as to the correctness of each of them.

The information contained in this brochure is for guidance only. Weston Homes Plc operates a policy of continuous product development and features may therefore vary from time to time.

Floorplans and dimensions can only be given as a guide and are indicative of the type only. The computer-generated images, floorplans, configuration and layouts are included for guidance only, please refer to drawings in the sales suite. It should be noted that the representations of The Laundry Works, whilst similar to the development, may not necessarily be accurate in every aspect.

These particulars should not be relied on as accurately describing any of the specific matters described by any order under the Consumer Protection from Unfair Trading Regulations (2008). This information does not constitute a contract of warranty. All details are correct as above at time of going to press. The Laundry Works is the marketing name to use until a permanent postal address has been issued.



