



Lloyd Court, Pinner, Middlesex, HA5 1EG

## Lloyd Court, Pinner, Middlesex, HA5 1EG

Offers In Excess Of £425,000

This stunning newly renovated maisonette with a private garden is located in the heart of Pinner with easy access to all local shops and transport links including the Pinner Metropolitan Line tube station.

As you enter the property, you have your own entrance lobby which leads up to the spacious first floor landing with doors to all rooms, featuring an airing cupboard with newly fitted heater.

The living room, in the heart of the property is bright with a double glazed window to the front. This property also enjoys two double bedrooms and a modern style shower room with a double glazed opaque window to the side.

The kitchen, beautifully re-modelled with ample cupboard space which includes lovely glass lit display overhead units is equipped with an integrated fridge/freezer, slim dishwasher, space and plumbing for washing machine, gas hob and extractor fan. The kitchen is located to the rear of the property and overlooks the garden via a double glazed window.

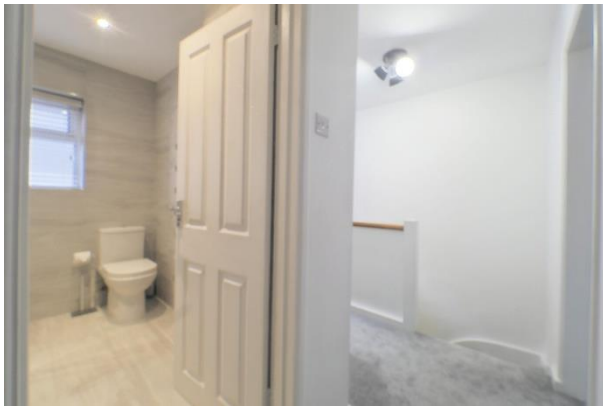
The property further benefits from gas central heating to radiators and heated towel rail in the bathroom.

Lloyd Court also offers a back garden with a paved area and plenty of opportunity for creative gardening.

Tenure: Leasehold







- Newly Renovated
- Private Garden
- Maisonette
- Bedroom One
- Bedroom Two

- Modern Fitted Kitchen
- Modern Fitted Shower Room
- Living Room
- Lease: 125 Years From 13 July 1982
- EPC rating: C



Property Ref:  
WAF102814

Version 0002



## Ground Floor

## First Floor

Total floor area 63.4 sq.m. (682 sq.ft.) approx

This floorplan is for illustrative purposes only and is not drawn to scale. Measurements, floor-areas, openings and orientations are approximate. They should not be relied upon for any purpose and do not form any part of an agreement. No liability is taken for any error or mis-statement. All parties must rely on their own inspections.



**see all our properties on** [zoopla.co.uk](https://www.zoopla.co.uk) | [rightmove.co.uk](https://www.rightmove.co.uk) | [sequencehome.co.uk](https://www.sequencehome.co.uk)

**check out more properties at** [brownandmerry.co.uk](https://www.brownandmerry.co.uk)

1. MONEY LAUNDERING REGULATIONS Intending purchasers will be asked to produce identification documentation at a later stage and we would ask for your co-operation in order that there is no delay in agreeing the sale. 2. These particulars do not constitute part or all of an offer or contract. 3. The measurements indicated are supplied for guidance only and as such must be considered incorrect. Potential buyers are advised to recheck measurements before committing to any expense. 4. We have not tested any apparatus, equipment, fixtures or services and it is in the buyers interest to check the working condition of any appliances. 5. Where an EPC, or a Home Report (Scotland only) is held for this property, it is available for inspection at the branch by appointment. If you require a printed version of a Home Report, you will need to pay a reasonable production charge reflecting printing and other costs. 6. We are not able to offer an opinion either written or verbal on the content of these reports and this must be obtained from your legal representative. 7. Whilst we take care in preparing these reports, a buyer should ensure that his/her legal representative confirms as soon as possible all matters relating to title including the extent and boundaries of the property and other important matters before exchange of contracts.



**01923 248861**



[Watford@brownandmerry.co.uk](mailto:Watford@brownandmerry.co.uk)



104 The Parade, Watford,  
Hertfordshire, WD17 1AW



**[brownandmerry.co.uk](https://www.brownandmerry.co.uk)**