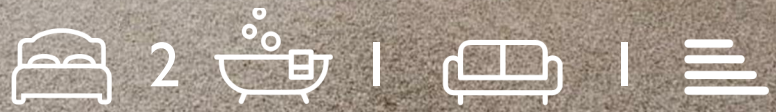




HUNTERS®
HERE TO GET *you* THERE



HUNTERS®
HERE TO GET *you* THERE



Crediton Hill, London

Per Calendar Month £2,750 Per Calendar Month



Welcome to this charming property located on Crediton Hill in London! This delightful house boasts a cosy reception room, perfect for relaxing or entertaining guests. With two lovely bedrooms, there's plenty of space for a small family or guests to stay over. The property features a well-maintained bathroom, ensuring convenience and comfort for all residents.

Spanning across 1,033 square feet, this house offers a comfortable living space for you to make your own. The location on Crediton Hill provides a peaceful and picturesque setting, ideal for those seeking a tranquil retreat in the bustling city of London.

Whether you're looking for a new family home or a cosy space to call your own, this property on Crediton Hill is sure to capture your heart. Don't miss out on the opportunity to make this house your own and enjoy the best of London living!

223 West End Lane, West Hampstead, London, NW6 1XJ | 0207 431 4777
westhampsteadlettings@hunters.com | www.hunters.com

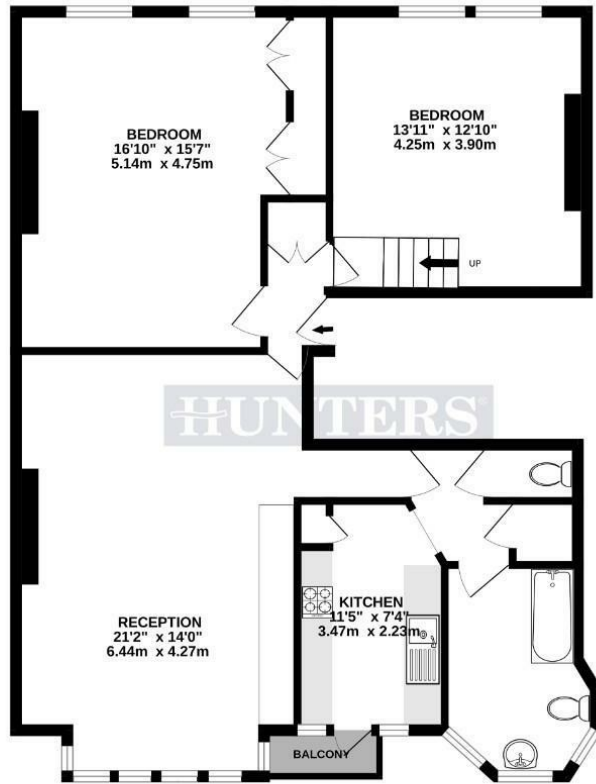


KEY FEATURES



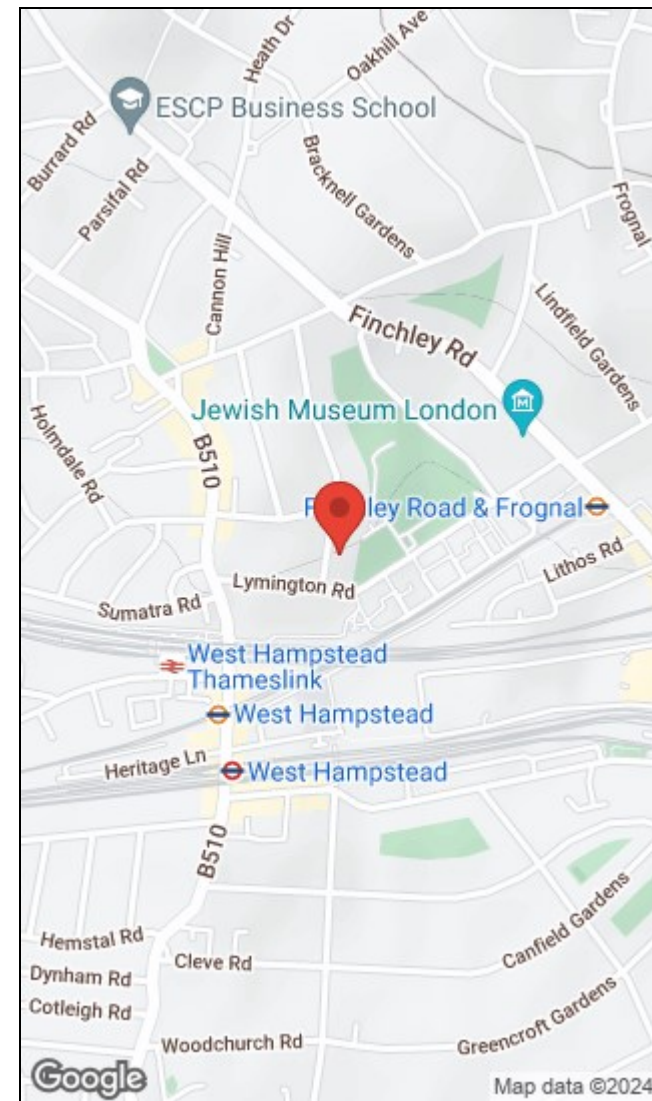


FIRST FLOOR
960 sq.ft. (89.2 sq.m.) approx.



TOTAL FLOOR AREA : 960sq.ft. (89.2 sq.m.) approx.

Whilst every attempt has been made to ensure the accuracy of the floorplan contained here, measurements of doors, windows, rooms and any other items are approximate and no responsibility is taken for any error, omission or mis-statement. This plan is for illustrative purposes only and should be used as such by any prospective purchaser. The services, systems and appliances shown have not been tested and no guarantee as to their operability or efficiency can be given.
Made with Metropix 10/2024



| Energy Efficiency Rating | | Current | Potential |
|---|--|-------------------------|-----------|
| Very energy efficient - lower running costs | | | |
| (92 plus) A | | | |
| (81-91) B | | | |
| (69-80) C | | | |
| (55-68) D | | | |
| (39-54) E | | | |
| (21-38) F | | | |
| (1-20) G | | | |
| Not energy efficient - higher running costs | | | |
| England & Wales | | EU Directive 2002/91/EC | |

| Environmental Impact (CO ₂) Rating | | Current | Potential |
|---|--|-------------------------|-----------|
| Very environmentally friendly - lower CO ₂ emissions | | | |
| (92 plus) A | | | |
| (81-91) B | | | |
| (69-80) C | | | |
| (55-68) D | | | |
| (39-54) E | | | |
| (21-38) F | | | |
| (1-20) G | | | |
| Not environmentally friendly - higher CO ₂ emissions | | | |
| England & Wales | | EU Directive 2002/91/EC | |

223 West End Lane, West Hampstead, London, NW6 1XJ | 0207 431 4777
westhampsteadlettings@hunters.com | www.hunters.com



This Hunters business is independently owned and operated by Starside Estates Limited | Registered Address: 29 Oakwood Park Road, London, N14 6QB | Registered Number: 6741529 England and Wales | VAT No: 943 9575 77 with the written consent of Hunters Franchising Limited.