



Connells

Bramley Avenue
Faversham



This smartly presented, semi detached, three bedroom home is part of a sought after, residential area on the edge of Faversham. Moments walk away from local amenities, the home also provides convenient access to Faversham town centre with its array of local shops and cafes, main line train station with regular high speed services to London and the A2 and M2 main roads with access to Canterbury, Ashford and London.

The property provides ample living space opening through a main hallway in to a light living room and open plan dining room with double doors overlooking the garden. The fitted kitchen boasts a number of wall and base units along with work surface over and plenty of space for white goods.

The first floor houses three bedrooms and a very modern family bathroom including a suite of bath with shower over, integrated WC and wash hand basin with vanity cupboard.



Another huge benefit of this lovely house is off road parking for two cars on the front of the property along with an en bloc garage and a further parking space to the rear. The garden is mostly laid to lawn with mature flower beds and fence surround. There is gated access via a side alley and rear gated access leading to the garage.

Early internal viewing on this home is recommended to avoid disappointment.

ACCOMMODATION

Entrance Hall

Entrance door to front. Stairs to first floor. Storage cupboard. Carpet. Radiator.

Lounge Area

10' 8" x 10' 7" (3.25m x 3.23m)

Window to front, radiator. Carpet. Open plan to:

Dining Area

12' 1" x 8' 4" (3.68m x 2.54m)

Double doors to garden. Laminated floor. Radiator.

Kitchen

8' 11" x 7' 11" (2.72m x 2.41m)

Window. Fitted kitchen with wall & base units. Sink/drain. Work surfaces. Integrated fridge/freezer, space for dishwasher and space for washing machine. Electric oven/hob. Door to garden.

First Floor Landing

Window. Access to loft. Airing Cupboard. Carpet.

Bedroom One

11' 6" x 8' 6" +doorway (3.51m x 2.59m +doorway)

Window, Carpet. Radiator.

Bedroom Two

11' 1" x 11' (3.38m x 3.35m)

Window, Carpet, Radiator.

Bedroom Three

8' 5" max x 8' max (2.57m max x 2.44m max)

Window, Carpet, Radiator.

Bathroom

Window. Suite of: Washbasin in vanity unit, WC, and bath with shower over. Fully tiled walls. Towel rail. Laminated floor.

Outside

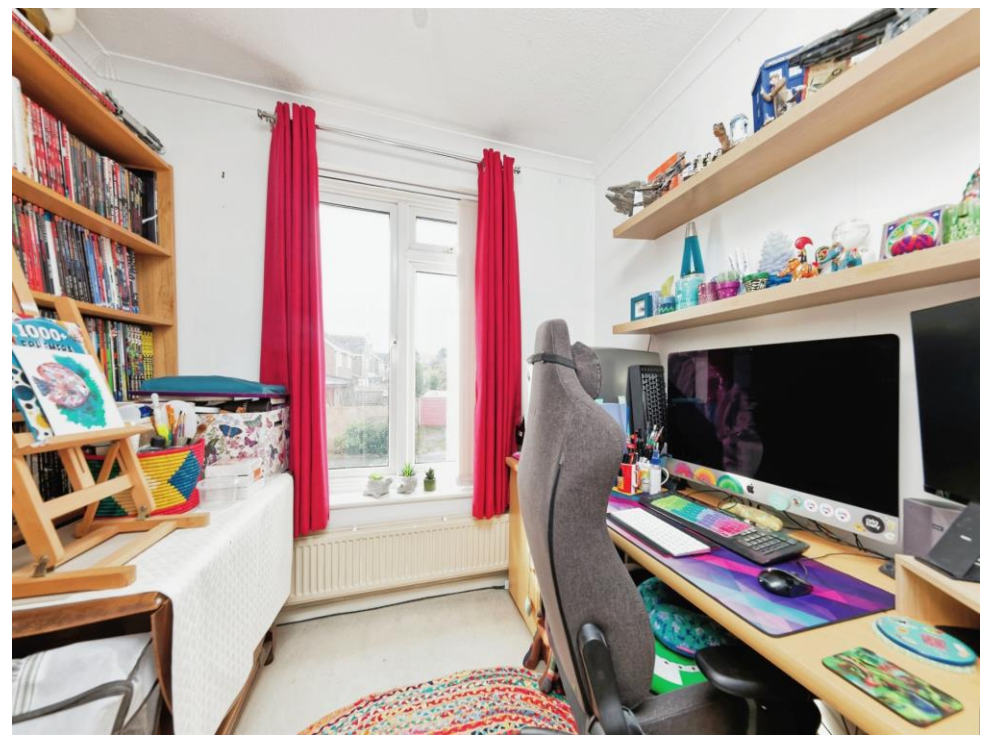
To the front there is a hard standing area providing off road parking for two cars. The rear garden is mainly laid to lawn with patio area. Side gate and rear gate to garage.

Outbuilding/Garage

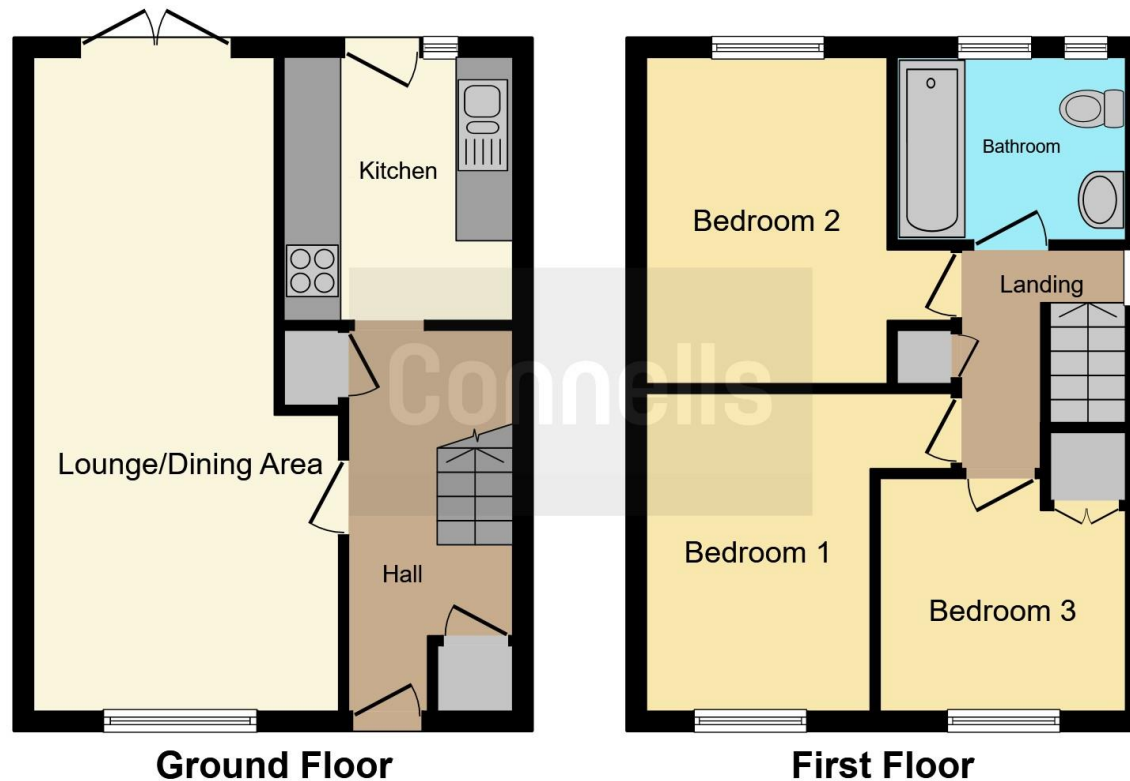
16' 11" x 8' 1" (5.16m x 2.46m)

Brick built with up and over door.









This floor plan is for illustrative purposes only. It is not drawn to scale. Any measurements, floor areas (including any total floor area), openings and orientation are approximate. No details are guaranteed, they cannot be relied upon for any purpose and they do not form part of any agreement. No liability is taken for any error, omission or misstatement. A party must rely upon its own inspection(s). Powered by www.focalagent.com

To view this property please contact Connells on

T 01795 533544
E faversham@connells.co.uk

7 Market Place
 FAVERSHAM ME13 7AG

EPC Rating: D

Tenure: Freehold

view this property online connells.co.uk/Property/FAV102981



1. MONEY LAUNDERING REGULATIONS Intending purchasers will be asked to produce identification documentation at a later stage and we would ask for your co-operation in order that there will be no delay in agreeing the sale. 2. These particulars do not constitute part or all of an offer or contract. 3. The measurements indicated are supplied for guidance only and as such must be considered incorrect. Potential buyers are advised to recheck measurements before committing to any expense. 4. We have not tested any apparatus, equipment, fixtures, fittings or services and it is in the buyers interest to check the working condition of any appliances.

Connells Residential is registered in England and Wales under company number 1489613, Registered Office is Cumbria House, 16-20 Hockliffe Street, Leighton Buzzard, Bedfordshire, LU7 1GN. VAT Registration Number is 500 2481 05.

See all our properties at www.connells.co.uk | www.rightmove.co.uk | www.zoopla.co.uk

Property Ref: FAV102981 - 0004