

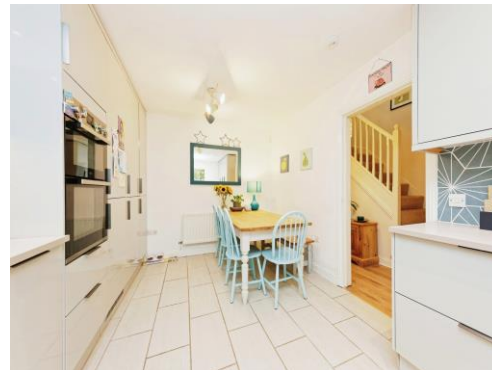


Connells

Finch Close
Faversham

Finch Close Faversham ME13 8JX

for sale guide price
£500,000 - £525,000



With accommodation spread over three floors, this five bedroom, end of terrace house would make an ideal family home allowing for plenty of living space, outside space and easy reach of local amenities.

The home has been extended to the loft to provide two double bedrooms and an upstairs cloakroom. The middle floor comprises three comfortable bedrooms, the main bedroom enjoying an en suite shower room. There is also a modern family bathroom with matching suite of bath, WC and wash hand basin.

The ground floor opens to a hallway leading in to the recently updated modern fitted kitchen complete with integrated appliances including fridge freezer, washing machine and dishwasher. The generous lounge area has double doors opening on to the rear garden.

To the outside of the home, the front opens on to a communal grass area, surrounded by trees and foliage for privacy and security. To the rear of the home is a low maintenance garden with patio area and car port for off road parking.

Nearby, there are local newsagents within walking distance for daily essentials along with Faversham town within easy reach with an array of cafes and shops as well as a regular markets. Faversham main line train station is also nearby with regular high speed services to Ashford and London.

ACCOMMODATION

Entrance Hall

Cloakroom

Window, WC and washbasin.

Kitchen

16' 1" x 10' 10" (4.90m x 3.30m)

Window to front. Fitted kitchen with wall & base units, work surfaces with sink/drain. Integrated appliances to include washing machine, fridge/freezer and dishwasher. Double oven, induction hob, partly tiled.

Lounge

17' 2" x 12' 2" (5.23m x 3.71m)

Dual aspect window with double doors to garden. Laminated floor.

First Floor Landing

Bedroom One

10' 1" x 9' 9" (3.07m x 2.97m)

Window, laminated floor. Radiator. Door to:

Ensuite Shower

Suite of WC, washbasin and shower cubicle. Towel rail.

Bedroom Two

12' 5" x 6' 8" (3.78m x 2.03m)

Window, carpet. Radiator.

Bedroom Three

10' 1" x 9' 10" (3.07m x 3.00m)

Window. Carpet. Radiator.

Family Bathroom

Windows. Suite of bath washbasin and WC. Tiled.

Second Floor

Bedroom Four

12' x 11' 8" (3.66m x 3.56m)

Velux window. Carpet, Radiator.

Bedroom Five

13' 1" x 11' 8" (3.99m x 3.56m)

Window. Carpet. Radiator.

Cloakroom

WC and washbasin.

Outside

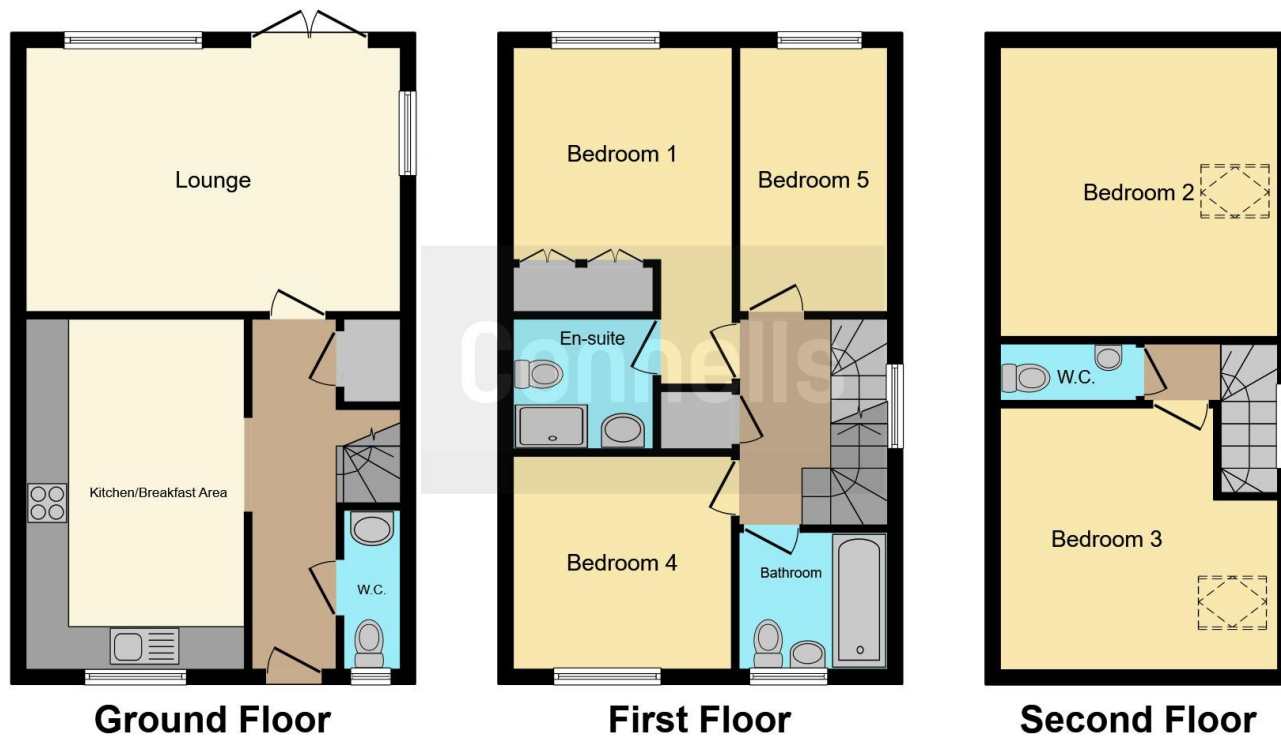
Low maintenance rear garden with patio area.

Car Port









This floor plan is for illustrative purposes only. It is not drawn to scale. Any measurements, floor areas (including any total floor area), openings and orientation are approximate. No details are guaranteed, they cannot be relied upon for any purpose and they do not form part of any agreement. No liability is taken for any error, omission or misstatement. A party must rely upon its own inspection(s). Powered by www.focalagent.com

To view this property please contact Connells on

T 01795 533544
E faversham@connells.co.uk

7 Market Place
 FAVERSHAM ME13 7AG

EPC Rating: C

Tenure: Freehold

view this property online connells.co.uk/Property/FAV102770



1. MONEY LAUNDERING REGULATIONS Intending purchasers will be asked to produce identification documentation at a later stage and we would ask for your co-operation in order that there will be no delay in agreeing the sale. 2. These particulars do not constitute part or all of an offer or contract. 3. The measurements indicated are supplied for guidance only and as such must be considered incorrect. Potential buyers are advised to recheck measurements before committing to any expense. 4. We have not tested any apparatus, equipment, fixtures, fittings or services and it is in the buyers interest to check the working condition of any appliances.

Connells Residential is registered in England and Wales under company number 1489613, Registered Office is Cumbria House, 16-20 Hockliffe Street, Leighton Buzzard, Bedfordshire, LU7 1GN. VAT Registration Number is 500 2481 05.

See all our properties at www.connells.co.uk | www.rightmove.co.uk | www.zoopla.co.uk

Property Ref: FAV102770 - 0010