



CHESTERWELL
OAKS

MERSEAHOMES

EST. 1947



CHESTERWELL
OAKS

INTRODUCING THE HERITAGE RANGE AT CHESTERWELL OAKS

JUST 24 LUXURY HOMES SURROUNDED
BY IMPRESSIVE OPEN SPACE AND ADJACENT
TO MAGNIFICENT PROTECTED WOODLAND

Created by Mersea Homes for discerning buyers, the Heritage Range is a carefully curated collection of generously proportioned detached houses that takes luxury, quality and craftsmanship to another level.

Each of the homes benefit from an enhanced external elevation with a number of attractive, nuanced architectural features. Inside each home, an upgraded specification and exquisite attention to detail delivers both comfort and luxury; these are homes that are as practical for everyday living as they are impressive for entertaining.

Chesterwell Oaks is set to become a highly desirable, statement address, combining the rarity value of 19 elegant and spacious new homes and a superb natural setting.

MERSEAHOMES
EST. 1947



Indicates current release

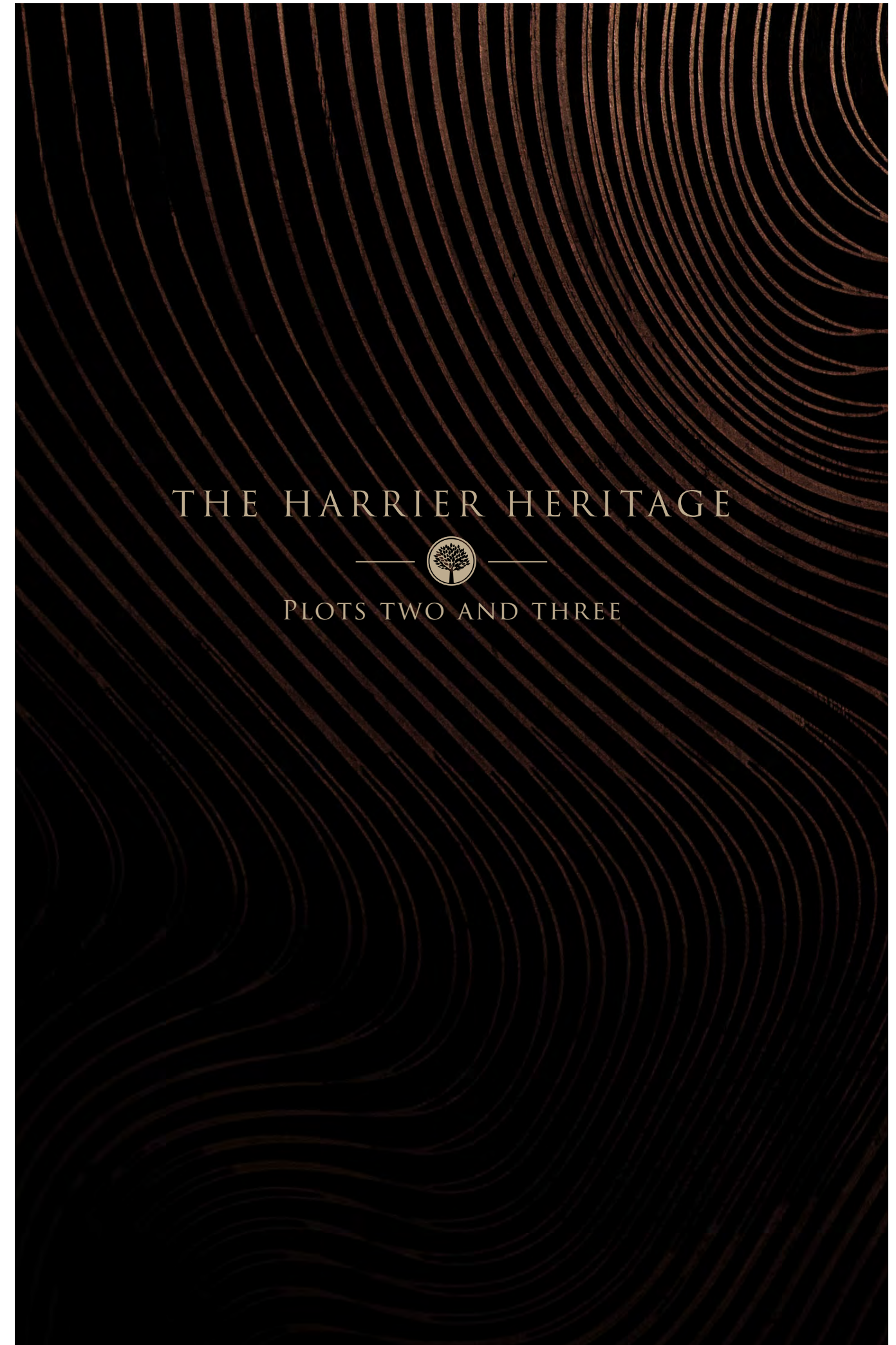


- Falcon Heritage
Plot 1
- Harrier Heritage
Plots 2, 3, 11, 14, 17 & 24
- Merlin Heritage
Plots 15 & 16
- Osprey Heritage
Plots 4, 5, 6, 12, 13 & 18
- Peregrine Heritage
Plots 7, 9, 20 & 21
- Steller Heritage
Plots 8, 10, 19, 22 & 23



Plot 2

Plot 3




THE HARRIER HERITAGE



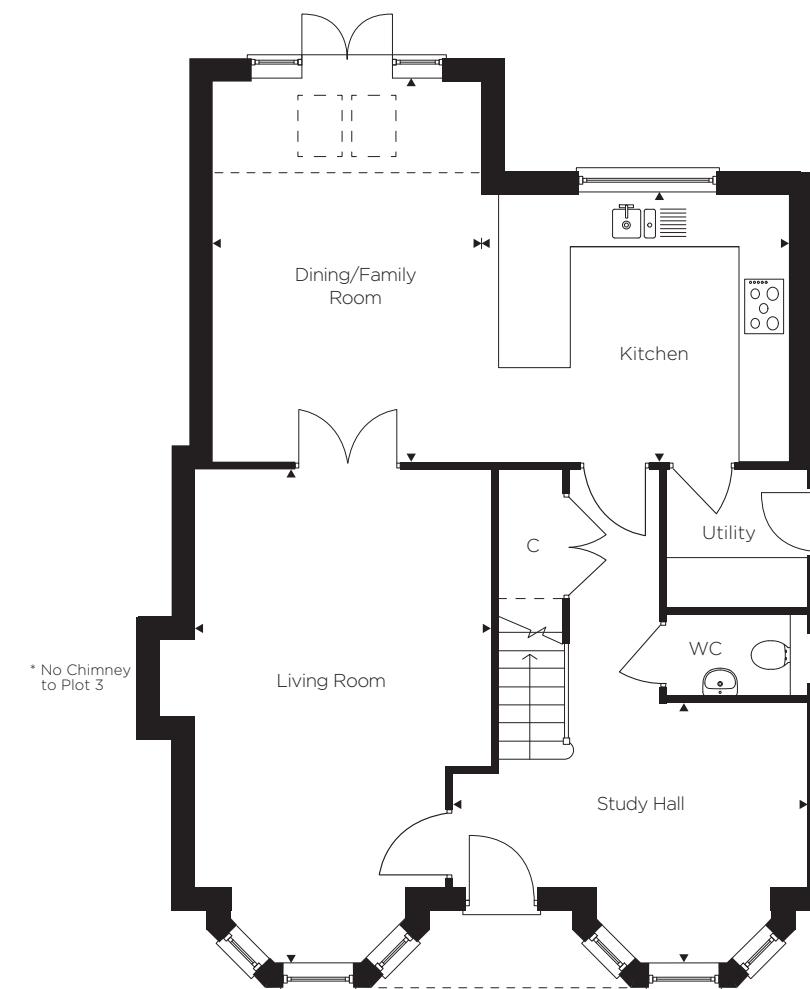
PLOTS TWO AND THREE



THE HARRIER HERITAGE



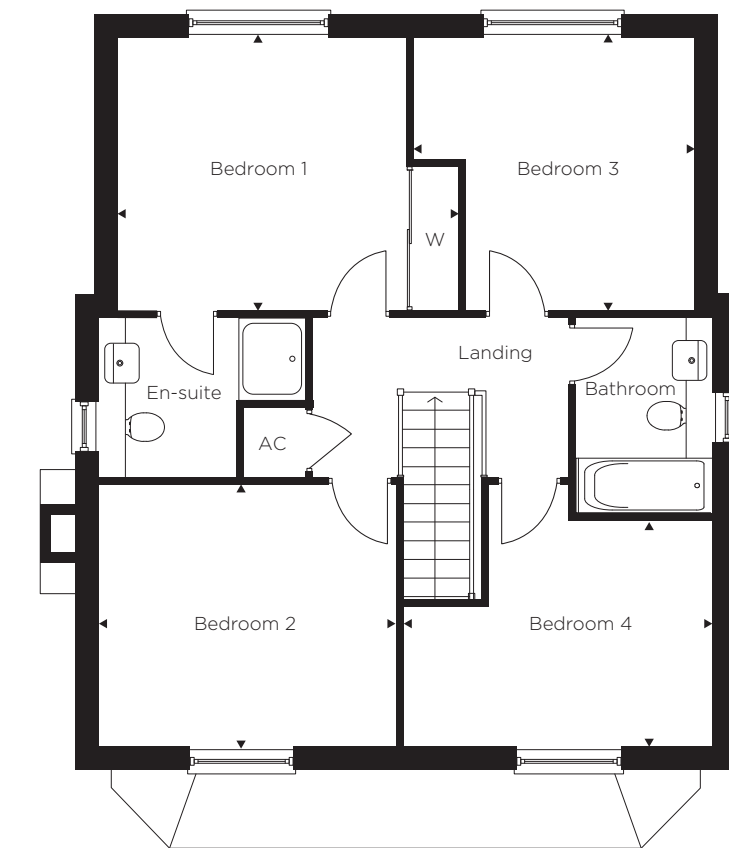
PLOTS TWO AND THREE



GROUND FLOOR

Kitchen	12'9" x 10'10"	3.90 x 3.31 m
Dining/Family	15'7" x 11'0"	4.78 x 3.37 m
Lounge	19'6" x 12'2"	5.95 x 3.71 m
Study/Hall	14'7" x 7'6"	4.45 x 2.30 m

Rooflights
 Vaulted Ceiling in Kitchen/Dining



FIRST FLOOR

Bedroom 1	11'11" x 10'10"	3.64 x 3.31 m
Bedroom 2	12'3" x 10'6"	3.74 x 3.21 m
Bedroom 3	11'7" x 10'10"	3.54 x 3.31 m
Bedroom 4	12'8" x 9'0"	3.88 x 2.76 m

Floorplans shown are approximate measurements only. Exact layouts and sizes may vary. All measurements may vary within a tolerance of 50mm. The dimensions are not intended to be used for carpet sizes, appliance sizes or items of furniture. Computer generated image indicative only.



Plot 5




THE OSPREY HERITAGE



PLOT FIVE



THE OSPREY HERITAGE



PLOT FIVE


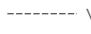


GROUND FLOOR

Kitchen/Utility/Family	20'4" x 12'2"	6.20 x 3.70 m
Lounge	24'4" x 13'10"	7.42 x 4.23 m
Dining	10'9" x 9'11"	3.29 x 3.02 m

FIRST FLOOR

Bedroom 1	15'0" x 13'11"	4.56 x 4.24 m
Bedroom 2	13'11" x 8'11"	4.24 x 2.73 m
Bedroom 3	12'7" x 10'0"	3.85 x 3.04 m
Bedroom 4	11'10" x 8'4"	3.62 x 2.54 m

 Rooflights
 Vaulted Ceiling in Kitchen/Family Room

Floorplans shown are approximate measurements only. Exact layouts and sizes may vary. All measurements may vary within a tolerance of 50mm. The dimensions are not intended to be used for carpet sizes, appliance sizes or items of furniture. Computer generated image indicative only.