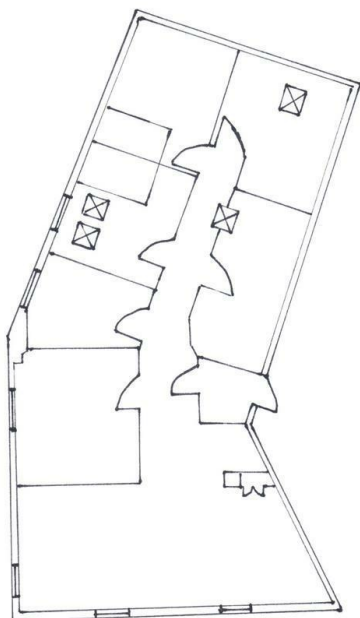




Flat 2, 73 Fisherton Street, Salisbury, SP2 7ST

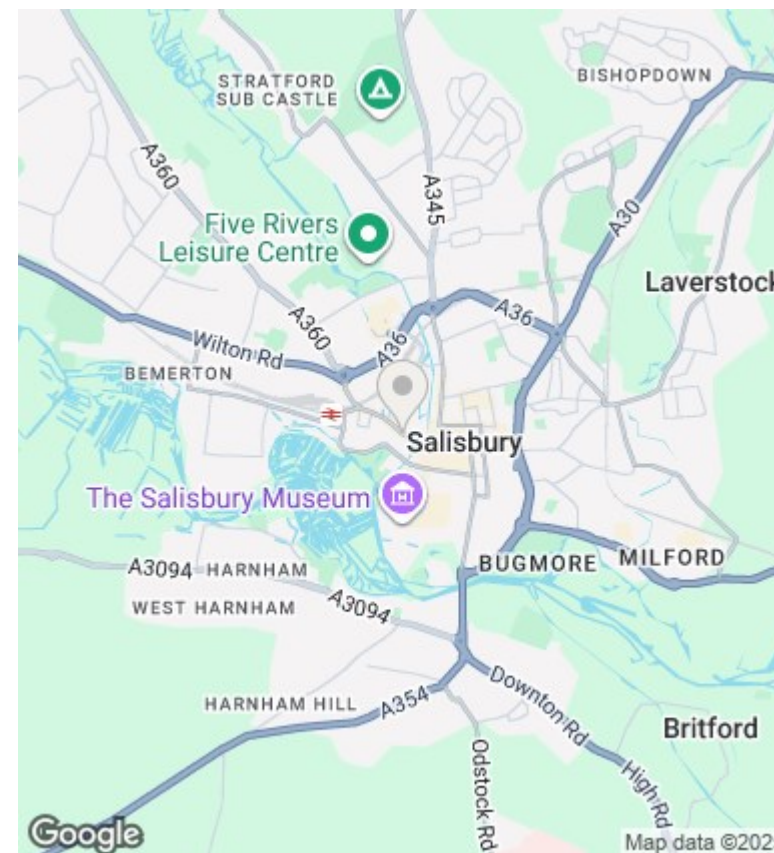
£1,800 PCM

- Well fitted contemporary Kitchen
- Located within City Centre
- WHITE GOODS INCLUDED
- Smart home
- FULLY FITTED KITCHEN
- Views of the Cathedral Spire
- 4 FULLY FURNISHED BEDROOMS WITH SMART TV PROVIDED
- Living room overlooks Water Lane



Floorplan

73 Fisherton Street
Salisbury



Directions

Viewings

Viewings by arrangement only.
Call 01722580263 to make an appointment.

Council Tax Band

C

EPC Rating:

C

| Energy Efficiency Rating | | |
|---------------------------------------------|-------------------------|-----------|
| | Current | Potential |
| Very energy efficient - lower running costs | | |
| (92 plus) A | | |
| (81-91) B | | |
| (69-80) C | 74 | 76 |
| (55-68) D | | |
| (39-54) E | | |
| (21-38) F | | |
| (1-20) G | | |
| Not energy efficient - higher running costs | | |
| England & Wales | EU Directive 2002/91/EC | |