



Osborne Heath

Courtenay House, Devenish Road, Sunningdale

Courtenay House

Devenish Road, Sunningdale, Berkshire, SL5 9PH

A brand new, gated, seven double bedroom, six bathroom, five reception detached family home.

Please note that all internal photographs are examples from previous developments.

Downstairs is a living room, formal dining room, study, kitchen with dining area, family room and bi-folding doors out to the garden, utility room and two downstairs WCs.

Upstairs the master bedroom suite has a living area leading out to a roof terrace, dressing room and an en suite with feature freestanding bath. There are three further bedroom suites, plus a guest bedroom above the garage with kitchenette and en suite shower room. The top floor has two more bedrooms or receptions and a bathroom.

Parts of the proposed floor plans are currently in planning and there is potential for a buyer to bespoke the size and layout.

To the front of the house is gated driveway parking and a double garage.

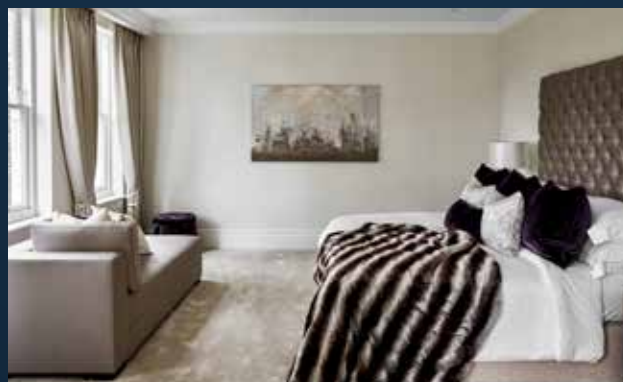
The property is located in Sunningdale off Devenish Road.

Nearby schools include Charters, Lambrook, The Marist, Papplewick, St Francis, St George's and St Mary's. Local places of interest include Ascot Racecourse, Coworth Park, Guards Polo Club, Sunningdale Golf Club, Virginia Water Lake, Wentworth Club and Windsor Great Park. The station in Sunningdale runs trains to London Waterloo and Reading.

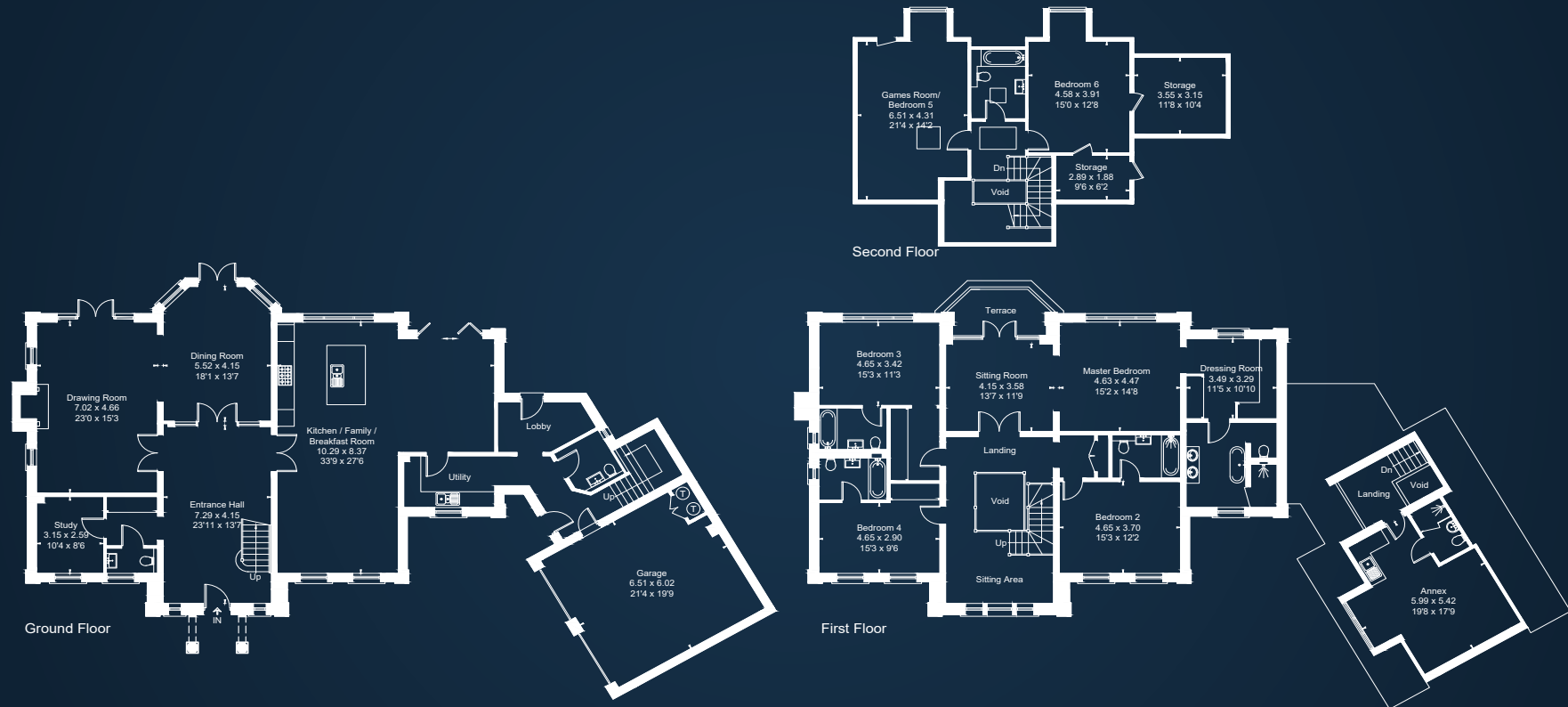
Sunningdale is also convenient for the M3, M4, M25 and Heathrow Airport.

EPC rating TBC.





Approximate Area = 525.9 sq m / 5661 sq ft
(Including Garage / Annex / Excluding Voids)



Drawn for illustration and identification purposes only by fourwalls-group.com 247410