

 5  2  4



Chobham Road, *Sunningdale*

OSBORNE HEATH

A five bedroom, four bathroom family home close to Sunningdale train station and shops, with a south facing garden, gated driveway, double garage and no onward chain.

On the ground floor there is a formal living room with feature fireplace, modern kitchen with central island, dining area and bi-folding doors out to the south facing garden, utility room and a downstairs WC.

The first floor has a principal bedroom with a large en suite, two further bedrooms and a family bathroom.

On the second floor there are two more en suite bedrooms, one of which is used as a family room.

Outside the property has a private gated driveway, double garage and a south facing garden.

Chobham Road is close to Sunningdale's shops and train station where services run to London and Reading. Local schools include Charters, Coworth Flexlands, Holy Trinity and The Marist. Nearby points of interest include Ascot Racecourse, Coworth Park, Legoland, The Lexicon, Sunningdale Golf Club, Virginia Water Lake, Wentworth Club and Windsor Great Park. Sunningdale is also convenient for the M3, M4, M25 and Heathrow Airport.

EPC rating D. Council Tax band G.





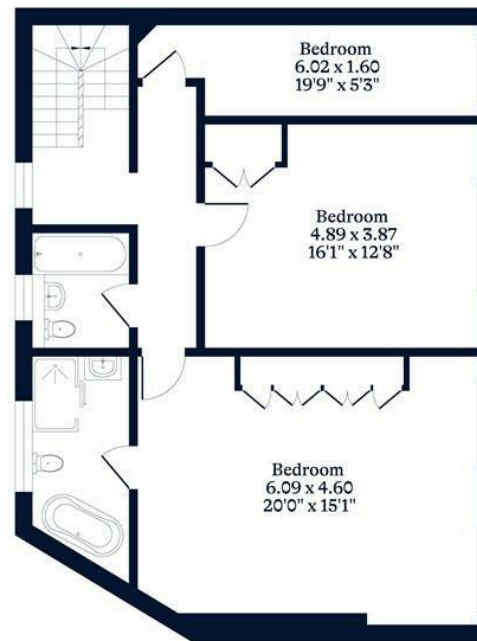
APPROXIMATE FLOOR AREA
House - 234.68 sq m - 2526 sq ft
(Gross Internal Area)



NOT TO SCALE
This plan is for illustration purposes only



Ground Floor



First Floor



Second Floor

OSBORNEHEATH.CO.UK

This floor plan has been created by Property Shoot Ltd following the RICS code of measuring and is for indicative guidance only. Whilst every attempt has been made to ensure the accuracy of the floor plan contained here, measurements of doors, windows and rooms are approximate and no responsibility is taken for any error, omission or misstatement. Details shown on this floorplan, including all measurements, areas and proportions cannot be guaranteed by either the provider or estate agency and should not be relied upon.

©PROPERTYSHOOT