

 4  2  3



# Parkers Lane, *Maidens Green*

OSBORNE HEATH



# A four bedroom, three bathroom semi-detached house with driveway parking in Maiden Green.

Downstairs there is a modern kitchen with central island and dining area, living room with patio doors leading out to the garden, bathroom with shower and utility room with storage.

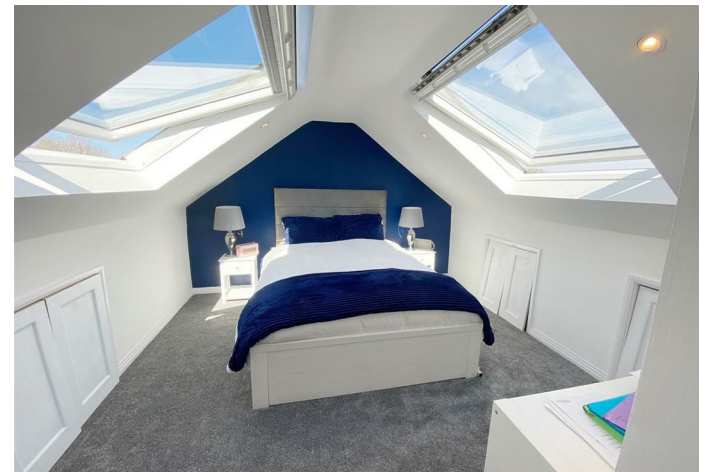
The first floor has three double bedrooms and a family bathroom. The top floor has a further double bedroom with en suite shower room, office area and storage in the eves.

Parkers Lane is part of Maidens Green Village in the parish of Winkfield. Within the village there are great pubs and restaurants such as The Winning Post and Stirrups. Maidens Green is on the outskirts of Ascot, close to Windsor and Bracknell. Nearby places of interest include Ascot Racecourse, Legoland, The Lexicon, Royal Berkshire Polo Club, Windsor Castle and Windsor Great Park. Maidens Green is also convenient for the M3, M4, M25 and Heathrow Airport.

EPC E. Council Tax Band D. Lease Length 12-36 months. Deposit £4,326. Holding Deposit £865









**APPROXIMATE FLOOR AREA**  
House - 174.00 sq m - 1873 sq ft  
(Gross Internal Area)



**NOT TO SCALE**  
This plan is for illustration purposes only



This plan is for layout guidance only. Not drawn to scale unless stated. Windows and door openings are approximate. Whilst every care is taken in the preparation of this plan, please check all dimensions, shapes and compass bearings before making any decisions reliant upon them.

[OSBORNEHEATH.CO.UK](http://OSBORNEHEATH.CO.UK)