

 3  3  2



Oriental Road, *Sunninghill*

OSBORNE HEATH

A modernised three bedroom, two bathroom home with driveway parking in a cul-de-sac close to Sunninghill Village.

On the ground floor there are three reception areas, a kitchen and a downstairs WC.

On the first floor there is a principal bedroom with en suite shower room, two further bedrooms, one of which is currently set up as a dressing room, and a family bathroom.

To the front of the house there is driveway parking and side access to the rear garden which has decking and a lawn.

Oriental Road is a small cul-de-sac in the village of Sunninghill, in-between Ascot and Sunningdale where the train stations run services to London, Reading and Guildford. Nearby schools include Charters, St Francis, St Michaels and The Marist. The village has a number of local high street businesses and great restaurants and pubs. Nearby places of interest include Ascot Racecourse, Coworth Park, Guards Polo Club, Legoland, The Lexicon, Wentworth Club and Windsor Great Park. Sunninghill is also convenient for the M3, M4, M25 and Heathrow Airport.

EPC rating C. Council Tax band E.

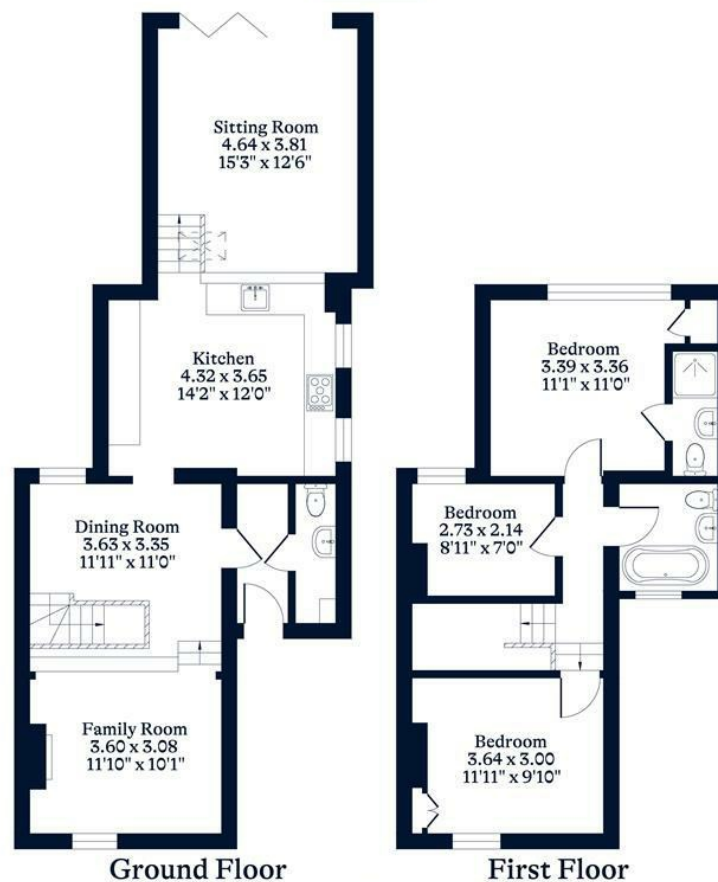




APPROXIMATE FLOOR AREA
House - 108.70 sq m - 1170 sq ft
(Gross Internal Area)



NOT TO SCALE
This plan is for illustration purposes only



This plan is for layout guidance only. Not drawn to scale unless stated. Windows and door openings are approximate. Whilst every care is taken in the preparation of this plan, please check all dimensions, shapes and compass bearings before making any decisions reliant upon them.

OSBORNEHEATH.CO.UK