

 4  2  1



Hungerford Square, *Weybridge*

OSBORNE HEATH

Four bedroom family home located with a prime location for local schools within Oatlands Village.

Downstairs is a living room, modern kitchen with dining area leading onto a conservatory that opens out to the garden, and a downstairs WC.

The first floor has four bedrooms and a family bathroom.

Outside is a private rear garden with decking and lawned area, there is also a double garage

Hungerford Square is a Mews within the Rosslyn Park, located in Oatlands Village. Nearby places of interest include Brooklands Museum, Hampton Court Palace, Mercedes-Benz World, the River Thames, Sandown Racecourse & St Georges Hill Golf Club, plus a selection of local artisan food shops and restaurants. Local schools include Oatlands and Manby Lodge, Cleves, St Georges Primary, Heathside and St Georges College. The local station is Walton-On-Thames, where trains run to London Waterloo, Basingstoke and Woking. Weybridge is also convenient for the A3, M25 and Heathrow Airport.

EPC Rating D. Deposit £3,288. Holding Deposit £657. Length of Tenancy - 12 to 24 months. Council Tax Band - F.

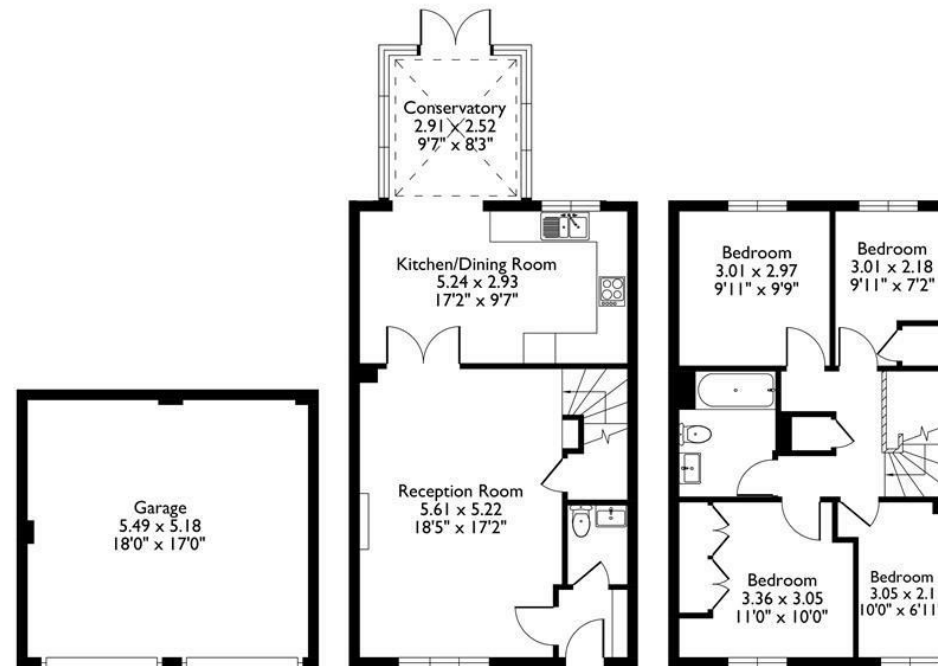




NOT TO SCALE

Approximate Floor Area
House 99.43 sq m - 1070 sq ft
Garage 27.72 sq m - 298 sq ft
Total 127.15 sq m - 1368 sq ft
(Gross Internal Area)

This plan is for illustration purposes only.



Garage

Ground Floor

First Floor

This plan is for layout guidance only. Not drawn to scale unless stated. Windows and door openings are approximate. Whilst every care is taken in the preparation of this plan, please check all dimensions, shapes and compass bearings before making any decisions reliant upon them.

© Property Shoot Ltd