

 2  1  2



Fernbank Road, *Ascot*

OSBORNE HEATH

A two double bedroom, two bathroom apartment with a south facing balcony and allocated parking.

This top floor apartment has a living and dining area leading out to the balcony, separate kitchen, two double bedrooms, en suite to the principal bedroom and a bathroom.

Outside there is allocated residents parking and further parking for visitors.

This development is on the corner of Barkers Meadow and Fernbank Road. The nearest train station is Ascot where services run to London, Reading and Guildford. By road Ascot is convenient for the M3, M4, M25 and Heathrow Airport. Nearby points of interest include Ascot Racecourse, Guards Polo Club, The Lexicon, Sunningdale Golf Club, The Berkshire Golf Club, Wentworth Club, Windsor Castle and Windsor Great Park.

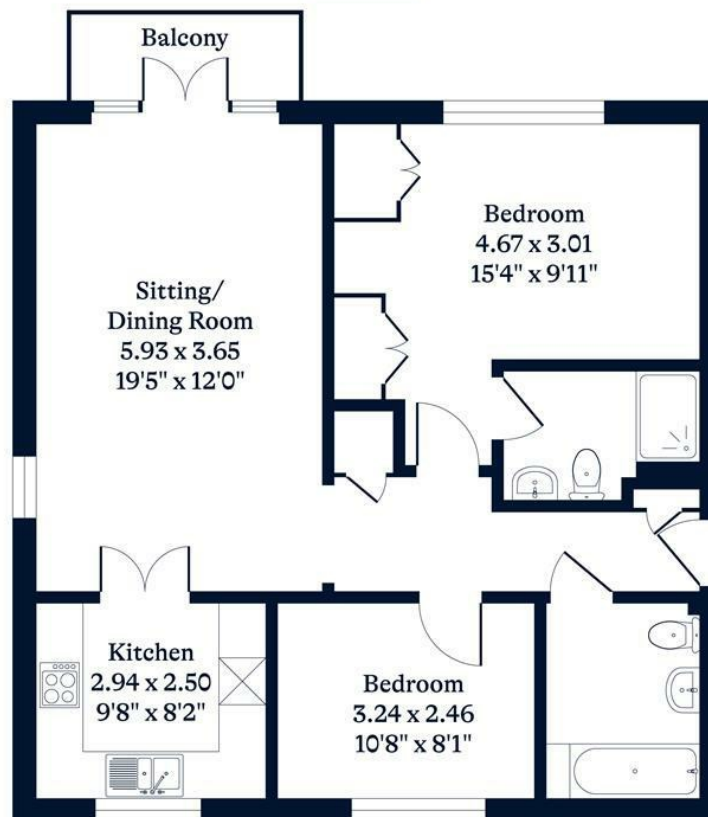
EPC rating C. Council Tax Band C. Ground Rent £658pa. Service Charge £1,078.92pa. Lease 76 years remaining.





APPROXIMATE FLOOR AREA
Apartment - 73.20 sq m - 788 sq ft
(Gross Internal Area)

NOT TO SCALE
This plan is for illustration purposes only



Second Floor

This plan is for layout guidance only. Not drawn to scale unless stated. Windows and door openings are approximate. Whilst every care is taken in the preparation of this plan, please check all dimensions, shapes and compass bearings before making any decisions reliant upon them.

OSBORNEHEATH.CO.UK